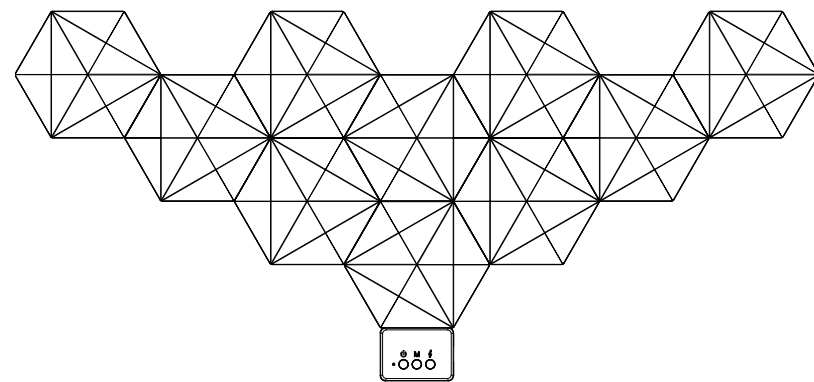


# living & co.



**USER MANUAL**

Hexagon Ambient Lamp

## Parameters

Product Name	Hexagon Ambient Lamp
Input	5V / 2A
Wattage of per panel	1W
Maximum pieces panels	1-15 pcs
Max Colors	RGB, 16.7 million
Working Temperature	-20°C to 40°C / -4°F to 104°F
Dimmability	App, Remote Controller, Button Controller

## What's in the box

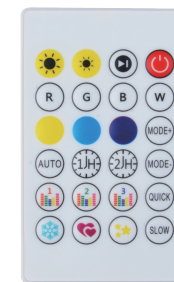
Light panel x 6, Linker x 6, Button Controller x 1, Remote controller x 1, Manual x 1, Double-sided adhesive tape x 6.

## Instruction for Button Controller

- Static / dynamic mode switching: short press cycle switching red, green, blue, yellow, blue, purple, white, reverse color, forward color, water, forward colorful light, forward colorful fluttering, colorful curtains, blue running, colorful colorful curtains, forward colorful running.
- Rhythmic mode switching: Energy 1, Energy 2, Rhythm 1, Rhythm 2, Scroll 1, Scroll 2.
- Short press to turn on/off lights: short press to turn off lights, short press to turn on lights.

01

## Instruction for Remote Controller

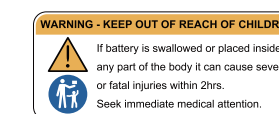
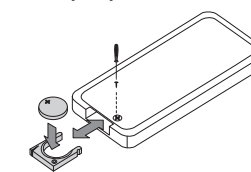


Pause	Auto mode	On/Off
Brightness+	Speed/Sensitivity+	Mode+
Brightness-	Speed/Sensitivity-	Mode-
Red	Green	Blue
Yellow	Cyan	Purple
Timed one hour light off	White	Timed two hours light off
Energy	Rhythm	Scrolling
Snowflake	Romantic	Starry Night

Please pull out the plastic tab from the bottom of the IR remote to ensure that the battery is powered properly. Make sure the IR remote aims at the IR receiver within the sensing distance. The angle of the IR receiver is 120° and the sensing distance is Max 8 metres (recommend 5 metres). Please remotely control within the sensing range.

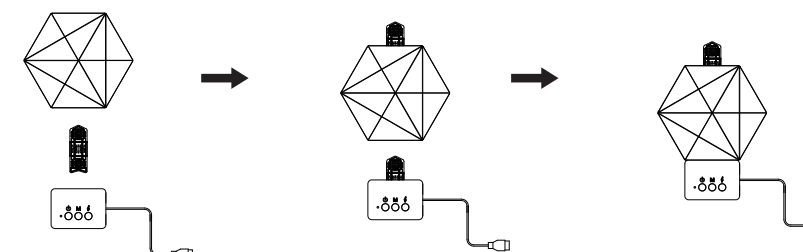
### INSERTING REPLACEMENT BATTERIES INTO THE REMOTE CONTROL

- Unscrew with a screwdriver.
- Remove the battery compartment underneath the remote control and insert a type CR2025 3 V battery (included already). Ensure battery polarity is correct.
- Refit battery tray ensure it clicks into position, then refit the security screw.



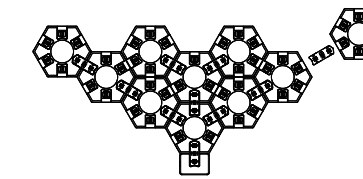
## Installation Instruction

1. Connect the controller to the first light panel with a linker.

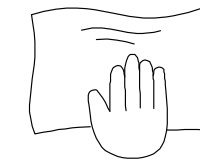


02

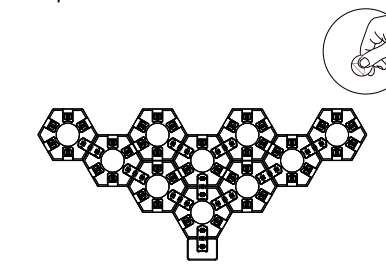
2. Connect the light panel with the linker, and splice the shape you want.



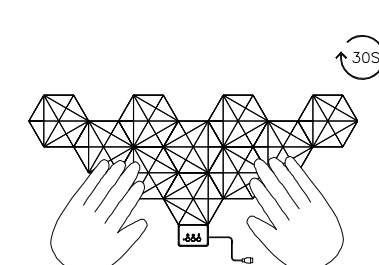
3. Ensure that the installation surface is clean, flat, and free of water stains.



4. Peel off the film from the double-sided tape.



5. Attach the light panel to the wall and press for 30 seconds.



6. Installation complete.

03

## Steps of Connection on Mobile

1. A smart phone or tablet with IOS 11.0 (or later) or Android 7.0 (or later).
2. Download the " LotusLamp X " App from the APP store (IOS devices) or Google Play (Android devices).



Google play



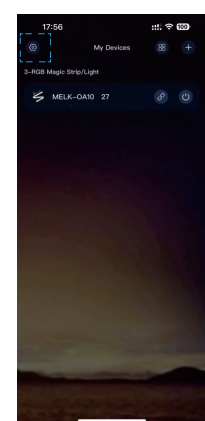
Apple store



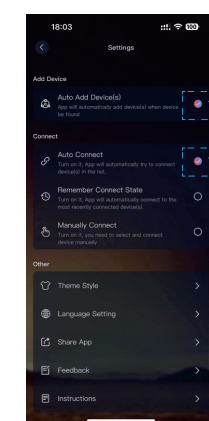
APP:LotusLamp X



3. Connect to the network and turn on Bluetooth.

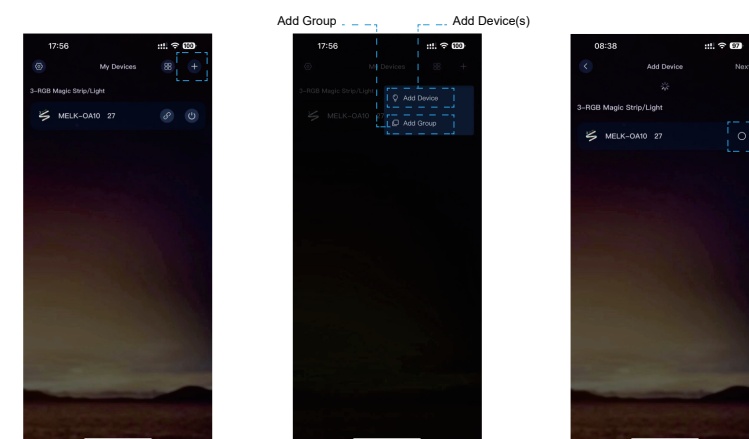


4. Open Settings in the APP to turn on Auto connect.



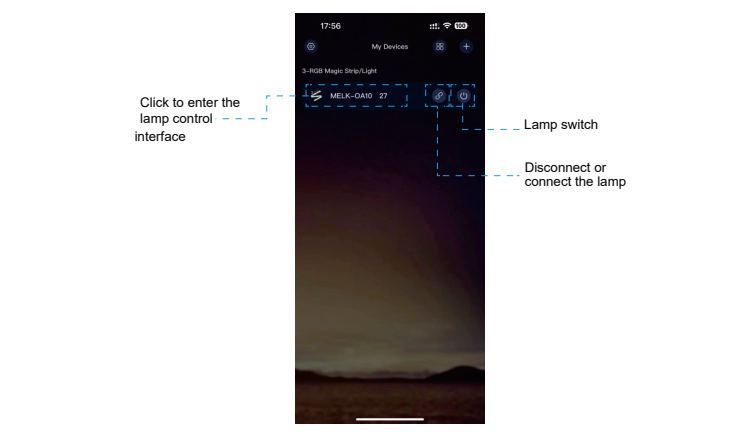
5. Set Auto Add Device(s).

04



6. Manually add device(s).

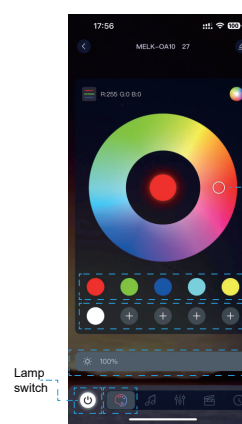
7. Add devices, select the devices to be paired.



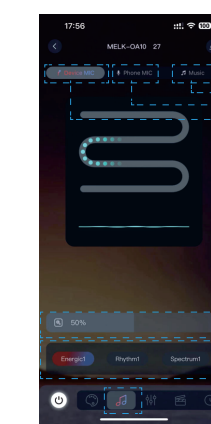
8. Add device(s) successfully.

05

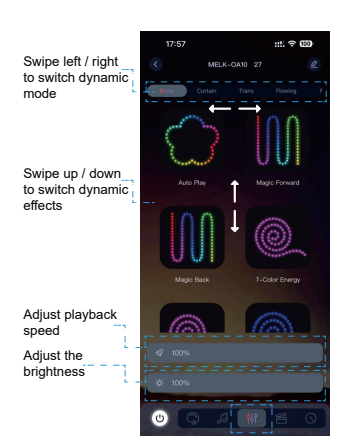
## APP Interface



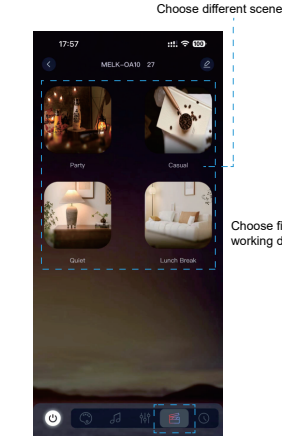
1. Static mode. The lamp will display the color selected by the user.



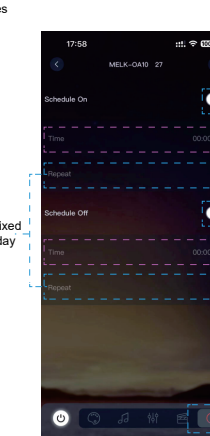
2. Microphone mode, the user can choose the MIC on the mobile phone or the lamp, and control the dynamic and color change of the lamp through the change of sound.



3. Dynamic mode, the user can choose different dynamic effects, so that the lamp can carry out corresponding dynamic changes.



4. Scene mode, Users can set different scene modes according to their preferences.



5. Schedule mode, the user can set the time to turn off / on the light by setting the time.

06

## Caution

Read and follow the safety instructions below.

1. This light panel is ideally used on smooth surfaces ( e.g. brick, stucco, etc. ); not suitable for uneven, bumpy or wet surfaces ( e.g. glass, etc. );
2. Clean and ensure the surface is totally dry before sticking the light panel on.
3. When installing the light panel, press its central point against the wall for more than 30s in order to maximize the adhesion.
4. Avoid installation above heat source objects, in areas where direct sunlight, airflow and temperature change significantly.
5. Avoid exposing the product to the outside and directly in the rain.
6. Do not use sharp and hard objects or rough pollutants to impact the light panel, as not to affect the function and appearance.
7. Do not leave the power cord idle on the ground to avoid stumbling.
8. Children who are not supervised by adults are not allowed to use this product alone. Some parts of this product are imported, there is a risk of choking.

### Responsible Disposal

At the end of its working life, do not throw this product out with your household rubbish. Electrical and electronic products contain substances that can have a detrimental effect on the environment and human health if disposed of inappropriately. Observe any local regulations regarding the disposal of electrical consumer goods and dispose of it appropriately for recycling. Contact your local council for advice on recycling facilities in your area. Please keep the original packaging carton and materials in a safe place. It will help to prevent any damage if the product needs to be transported in the future. In the event it is to be disposed of, please recycle all packaging material where possible.



### Warranty

We pride ourselves on producing a range of quality products that are both packed with features and completely reliable. We are so confident in our products, we back them up with a 1 year warranty. Now you too can relax knowing that you are covered. Customer Helpline NZ: 0800 422 274. This Product is covered by a 1 year warranty when accompanied by proof of purchase.

living & co.

IM version 1.0 June 2025

07