

Kensington.

9fin Digital Oil Heater



INSTRUCTION MANUAL ZOH208E-0920


Contents

	Page
Important Safety Instructions	2-3
Product Overview	3-4
Getting Started	5
Operating Instructions	6-7
Other Useful Information	8-9
Warranty	10

Important Safety Instructions

READ CAREFULLY AND KEEP FOR FUTURE REFERENCE

Read this manual thoroughly before first use, even if you are familiar with this type of product. The safety precautions enclosed herein reduce the risk of fire, electric shock and injury when correctly adhered to. Make sure you understand all instructions and warnings. **Keep the manual in a safe place for future reference**, along with any warranty information, your purchase receipt and the original packaging carton. If you sell or transfer ownership of this product, pass on these instructions to the new owner. **Always follow basic safety precautions and accident prevention measures when using an electrical appliance, including the following:**

- This appliance is not intended for use by persons (including children) with reduced physical, sensory or mental capabilities, or lack of experience and knowledge, unless they have been given supervision or instruction concerning use of the appliance by a person responsible for their safety.
- Children should be supervised to ensure that they do not play with the appliance.
- CAUTION - Some parts of this product can become very hot and cause burns. Particular attention has to be given where children and vulnerable people are present.
- If the supply cord is damaged, it must be replaced by the manufacturer, its service agent or similarly qualified persons in order to avoid a hazard.
- Warning: In order to avoid overheating, do not cover the heater. The meaning of figure  in marking is "DO NOT COVER".
- The heater must not be located immediately below a socket-outlet.
- Do not use this heater in the immediate surroundings of a bath, a shower or a swimming pool.
- This appliance only for household use.
- WARNING: Do not use this heater in small rooms when they are occupied by persons not capable of leaving the room on their own, unless constant supervision is provided.
- This heater is filled with a precise quantity of special oil. Repairs requiring opening of the oil container are only to be made by the manufacturer or his service agent who should be contacted if there is an oil leakage. Regulations concerning the disposal of oil when scrapping the appliance have to be followed.
- Do not use this heater if it has been dropped.
- Do not use if there are visible signs of damage to the heater.
- Use this heater on a horizontal and stable surface, or fix it to the wall, as applicable.

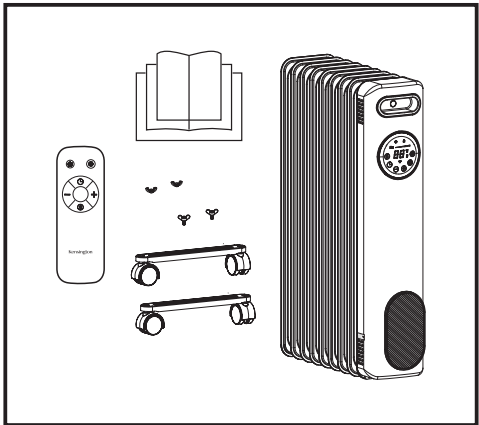
Important Safety Instructions (Continued)

- **WARNING:** To reduce the risk of fire, keep textiles, curtains, or any other flammable material a minimum distance of 1m from the air outlet.
- Do not attempt to repair, disassemble or modify the appliance. There are no user-serviceable parts inside.
- **CAUTION** – if using an extension lead please ensure you do not exceed the maximum rated running wattage/load of the extension lead.
- Disconnect from mains when not in use or when moving or cleaning.
- The heater is hot when in use .To avoid burns, do not let bare skin touch hot surface.

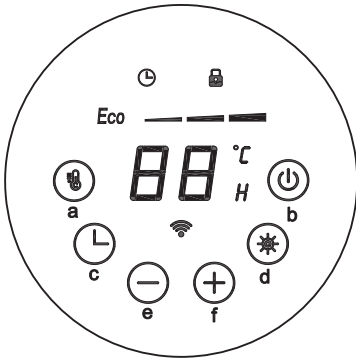
Product Overview



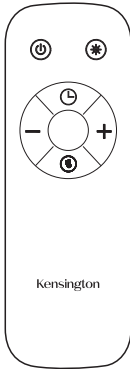
A-Handle
B-Control panel
C-Cord storage
D-Wheel base
E-Wheel



Product Overview (Continued)



- a. Thermostat button
- b. Stand-by on/off button
- c. Timer button
- d. Power/Mode button
- e. Temperature & hours decrease button
- f. Temperature & hours increase button



The remote control requires 2pcs AAA batteries (not included). Follow the +/- polarity indicated on the remote control. The remote control must be pointed towards the remote sensor on the control panel.

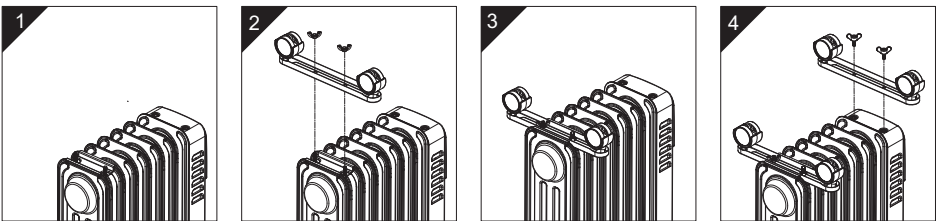
Getting Started

Before first use

- **Unpacking:** This product has been packaged to protect it against transportation damage. Unpack the appliance and keep the original packaging carton and materials in a safe place. It will help prevent any damage if the product needs to be transported in the future, and you can use it to store the appliance when it is not in use. In the event it is to be disposed of, please recycle all packaging materials where possible.
- **Inspection:** Unwind the cord to its full length and inspect it for damage. Do not use the appliance if the appliance or its cord have been damaged or are not working properly. In case of damage, contact our after sales support centre for advice on examination, repair or return of the damaged product.

Assemble the wheel bases

- Turn the radiator upside-down on a scratch-free and stable surface to prevent damage to the paint finish or your floor surfacing(see Fig 1).
 - Attach one wheel+baseplate assembly to the bolts at the rear bottom of the heater, then securely fasten it onto the heater by two wing nuts (see Fig. 2-3).
 - Note: do not over tighten, which may cause the damage of radiator flange. Attach another wheel+baseplate assembly to the bolts at the bottom of control panel, then securely fasten it to the heater by two swing screws. (see Fig. 4)
- WARNING: Only operate the radiator in normal upright position with wheels assemblies attached to the bottom (wheels on the bottom, controls on the top), any other position could create a hazardous situation



Operating Instructions

On

Place the product in an upright position on a flat, stable, heat-resistant surface. Make sure there is nothing flammable or heat sensitive within 1 meter. Operating the product in any other position could cause a hazard. Locate near a socket outlet for the NZ plug.

Plug in the heater, the stand-by button (⏻) and Timer button (⌚) will light on. The product is now in stand-by awaiting a mode to be selected via the buttons on the appliance. Press button (⏻) or (⌚), the screen and other buttons will light on also. The appliance emits a beep sound.

The following settings can be performed using the touch panel.

A beep sound is emitted at every key press.

Press the stand-by button (⏻) to exit the stand-by mode and begin selection of the different modes. Heater will start working under Eco mode (Eco).

Heating power and Eco mode setting

Press the Power/Mode button (⊛), it will cycle through High power (▬▬▬) → Medium power (▬▬) → Low power (▬) → Eco mode (Eco).

Note:

The higher the power is, the quicker the desired temperature will be achieved but the power consumption will be higher. Lower power levels are recommended when the heater is being used for an extended period of time.

Eco mode

Press the Power/Mode button (⊛), until the “Eco” light turn on.

Under Eco mode, the heating power will adjust automatically when the room temperature is approaching the setting temperature.

Remark: if no thermostat setting, the default temperature is 23°C.

Thermostat setting

Desired temperature setting rang: 5°C, 10-30 °C

- Press the Power/Mode button (⊛) to set the power mode.
- Press the thermostat button (⊛), the temperature digit will blink.
- Use the “+” and “-” buttons to set the desired temperature.
- The setting temperature digit will stop blinking and the setting temperature will appear on screen. The heater will maintain the air temperature in the room by switching on and off automatically.

Remark: After plugging in the heater, during the first three minutes with the thermostat setting under High, Med, Low power, even when the heater reaches the temperature setting, it will continue heating for several minutes.

Operating Instructions (Continued)

Timer : Auto power on

Note: This function should only be set if you require the heater to be automatically turned on after a certain period of time (1 to 24 hours from the time the function is set). Only make timer power on setting under Stand-by mode.

- Plug in the heater, the button stand-by button (⏻) and Timer button (⌚) will light on. The appliance will be in Stand-by mode.
- Press the Timer button (⌚), the hour digit will blink.
- Use the “+” and “-” buttons to set the heater operation time between 1 and 24 hours. This function will activate once the hour digit stops blinking. The count down digits will show on the display
- The heater will automatically turn on when the time runs out.

Remark .

Note : When using timer modes, consideration should be given to the fact that the heater may come on whilst unattended. Always follow the safety instructions provided.

Timer : Auto power off

Note: This function should only be set if you require the heater to be automatically shut off after a certain period of time (1 to 24 hours from the time the function is set)

- When heater is working, press the Timer button (⌚), the start hour digit will blink.
- Use the “+” and “-” buttons to set the heater operation time between 1 and 24 hours. This function will activate once the hour digit stops blinking. The count down digits and setting temperature will alternately show on the display.
- The heater will automatically shut off when the time runs out.

Child lock setting

Press both stand-by button (⏻) and Power/Mode button (⊛) for 3 seconds, the buttons will be locked. If need unlock it, press both buttons for 3 seconds again.

If want to turn off the buttons' beep sound, press both “+” and “-” buttons for 3 seconds. If want to recover the beep sound, press both buttons for 3 seconds again.

Other Useful Information

Safety features:

Tip-over protection

This heater is protected with a safety switch that turns off the appliance automatically when the heater falls over, or is at an excessive angle from the horizontal. This helps prevent accidents, and the heater will resume operation when it is put back upright.

Overheat protection

This heater is protected with overheat protection that switches off the appliance automatically in case of severe overheating. In this case, unplug the appliance, wait about 30 minutes for it to cool and remove any possible cause of overheating, eg. something covering the heater. Check for damage to the appliance, the cord and the plug. If there is no damage, plug the unit back in and switch it on as described above. If the heater still does not turn on, please contact Customer Service for assistance.

Technical Specification:

- 220-240V~50Hz, 2000W, Class I

MAINTENANCE

- Always remove the plug from the socket-outlet and allow the radiator to cool down before clean the heater.
- Wipe radiator with a soft damp (not wet) cloth.

WARNING:

- Do not immerse the heater in water.
- Do not use any cleaning chemicals such as detergents and abrasives.
- Do not allow the interior to get wet as this could create a hazard.
- To store away the heater, wind the cable round bobbin and store the heater in a clean dry place.
- In case of malfunction or doubt, do not try to repair the radiator yourself, it may result in a fire hazard or electric shock.

Compliance

This appliance has been fully tested and meets all requirements as set out by the standard AS/NZS 60335.2.30 in conjunction with AS/NZS 60335.1

Other Useful Information (Continued)



The RCM Mark (Regulatory Compliance Mark) indicates that the product complies with the National requirements for the safety and EMC requirements of electrical devices.

Responsible disposal

- At the end of its working life, make the appliance unserviceable by unplugging it from the power outlet and cutting the power cord.
- Do not throw this appliance out with your household rubbish. Electrical and electronic products contain substances which can have a detrimental effect on the environment and human health if disposed of inappropriately. Observe any local regulations regarding the disposal of electrical consumer goods and dispose of it appropriately for recycling. Contact your local council for advice on recycling facilities in your area.



Kensington.

Warranty

We pride ourselves on producing a range of quality home appliances that are both packed with features and completely reliable. We are confident in our products, we back them up with a 3 year warranty. Now you too can relax knowing that you are covered.

Customer Helpline NZ: 0800 422 274

This product is covered by a 3 year warranty when accompanied by proof of purchase.

IM Version 1.0 November 2025