

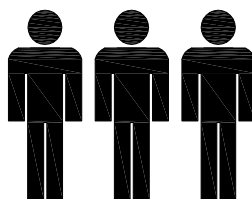
**MODEL NAME:**

# INDIANA QUEEN BED FRAME

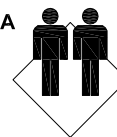
**60min**

**APPROXIMATE ASSEMBLY TIME**

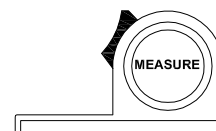
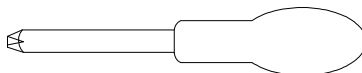
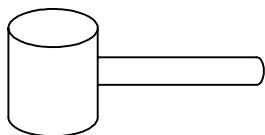
**3 PERSON OF  
ASSEMBLY**



**FLOOR AREA  
2.0M X 3.0M**

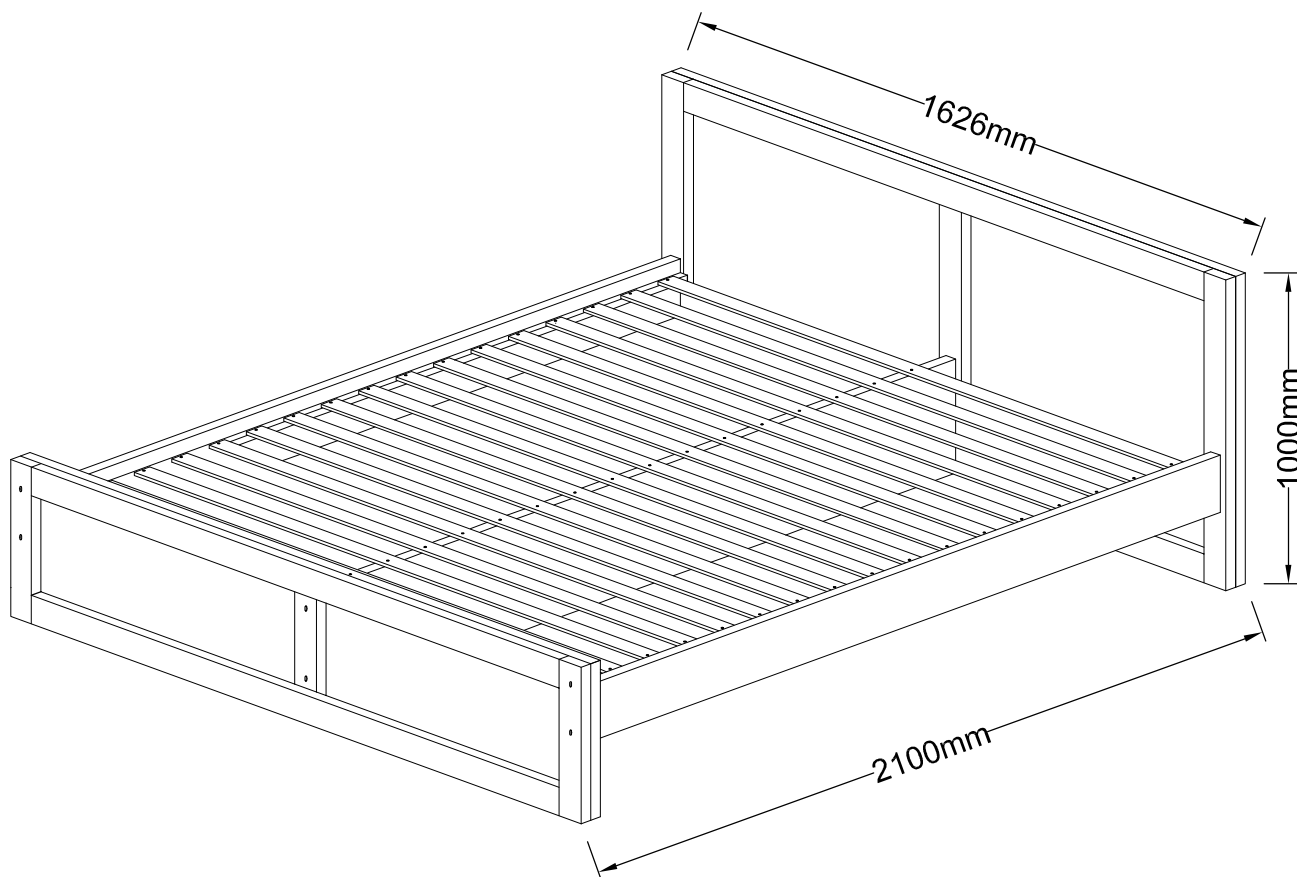


**REQUIRED ASSEMBLY SPACE**



**REQUIRED ASSEMBLY TOOLS**

**ASSEMBLED DIMENSIONS**

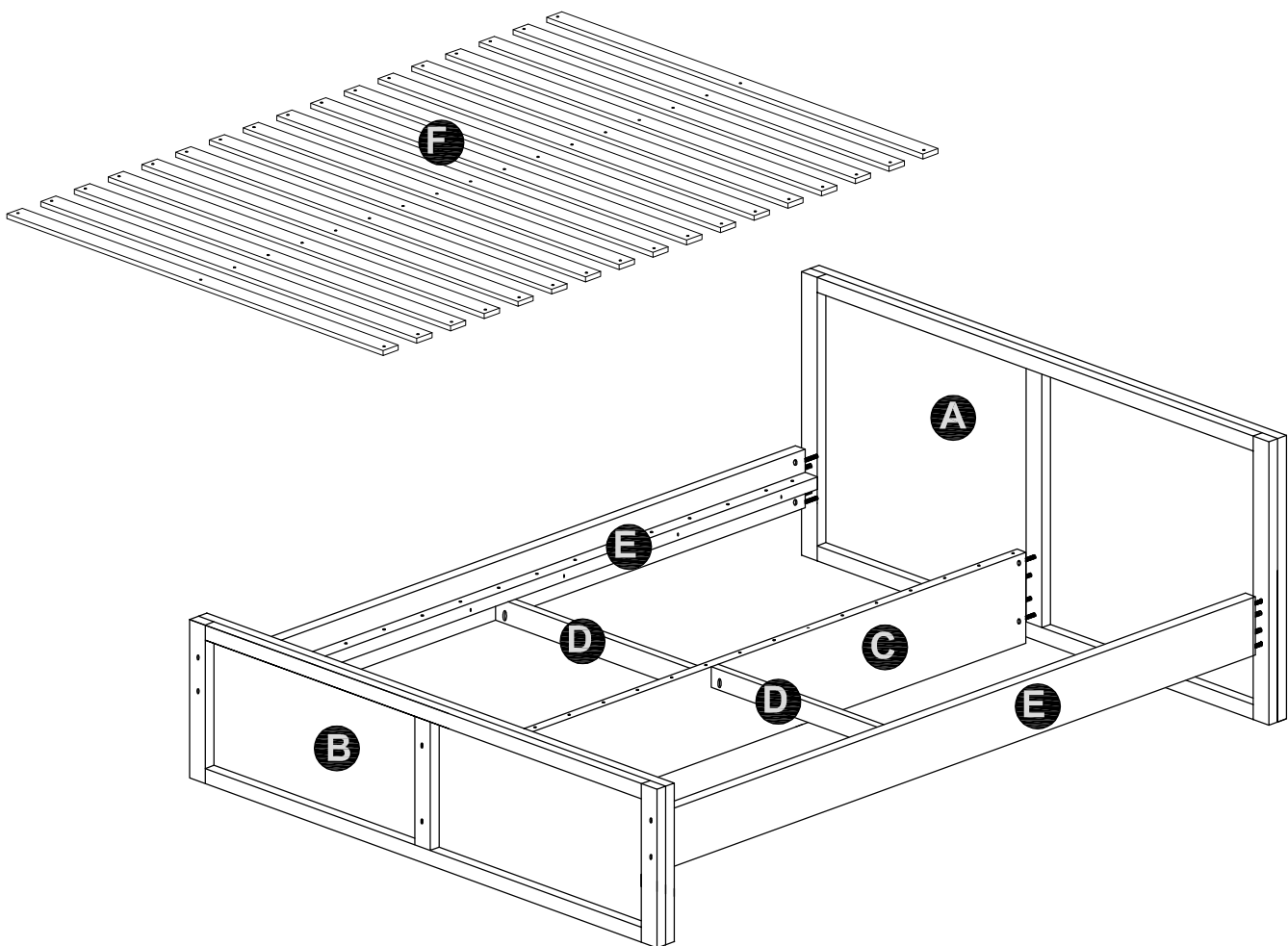


**MODEL NAME:**

# **INDIANA QUEEN BED FRAME**

<b>NO.</b>	<b>PART LIST</b>	<b>QTY</b>
(A)	HEADBOARD	1
(B)	FOOTBOARD	1
(C)	CENTRE PANEL	1
(D)	BOTTOM SUPPORT	2
(E)	SIDE RAIL	2
(F)	SLATS	17

## **PARTS LIST**

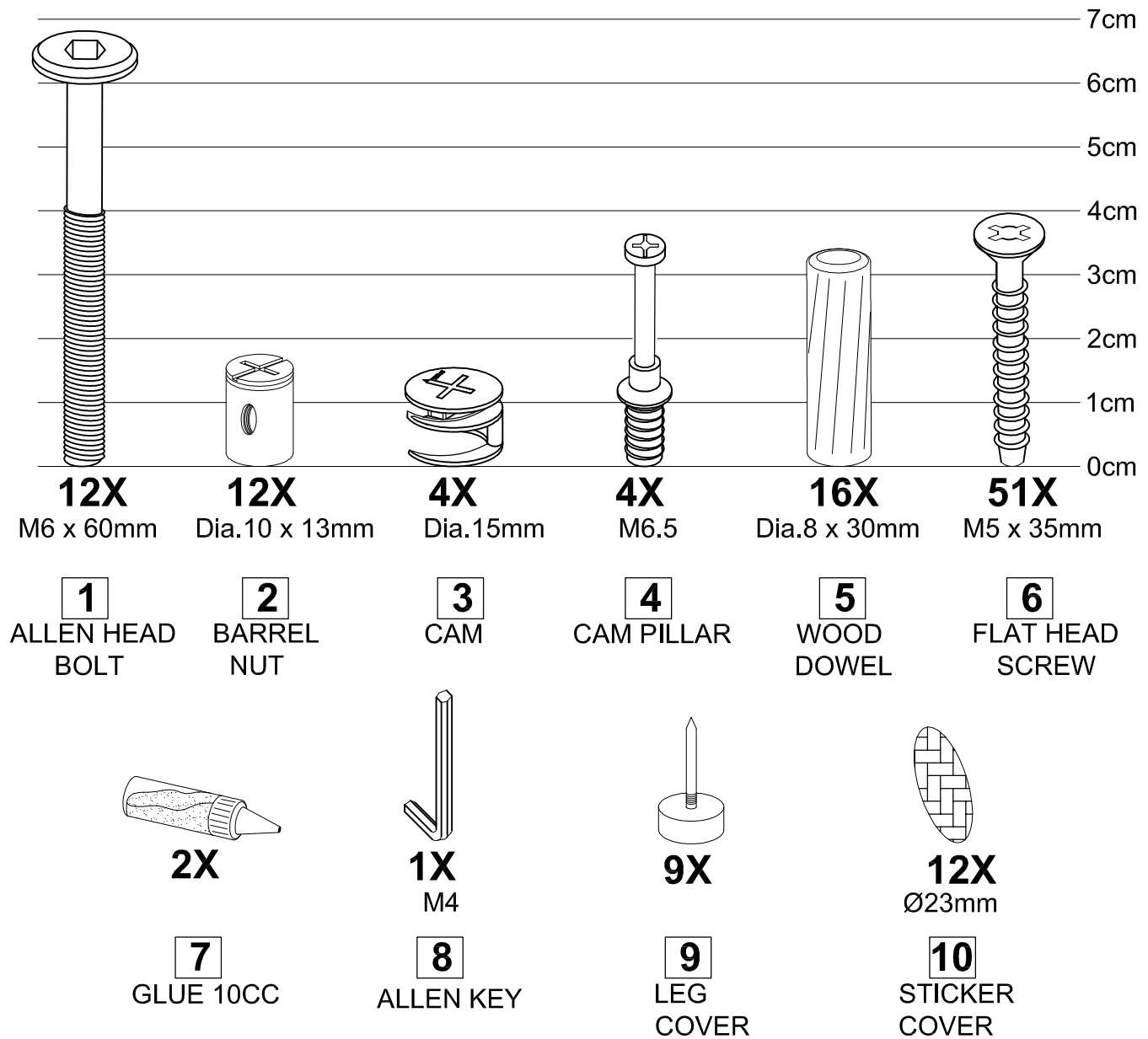


**WARNING :** DO NOT REMOVED UPON COMPLETED INSTALLATION  
(DO NOT DISMANTLED)

MODEL NAME:

# INDIANA QUEEN BED FRAME

## HARDWARE LIST



	<b>MODEL NAME:</b> <b>INDIANA</b> <b>QUEEN BED FRAME</b>
--	--

### Top Tips before you start!

1. Please check that all parts are present before you start the assembly of your furniture, as once assembled, the furniture is exempt from our home approval policy.
2. For ease and speed of assembly, we recommend that before you commence each step of the assembly, that you identify all the parts required for that step.
3. For larger items, please ensure that you have sufficient space and people ( as indicated on page 1 ) to assemble your product safely
4. We recommend that, where possible, all items are assembled near to the area in which they will be placed in use, to avoid moving the product unnecessarily once assembled.
5. For the protection of your furniture, particularly items of high gloss finish, we recommend that the product is placed on a protected surface during assembly to prevent any damage.
6. During assembly please take care not to over-tighten any fittings, as this may damage the product.
7. Warning: Once assembled this bed is not design for Dis-Assembly and Re-Assembly.

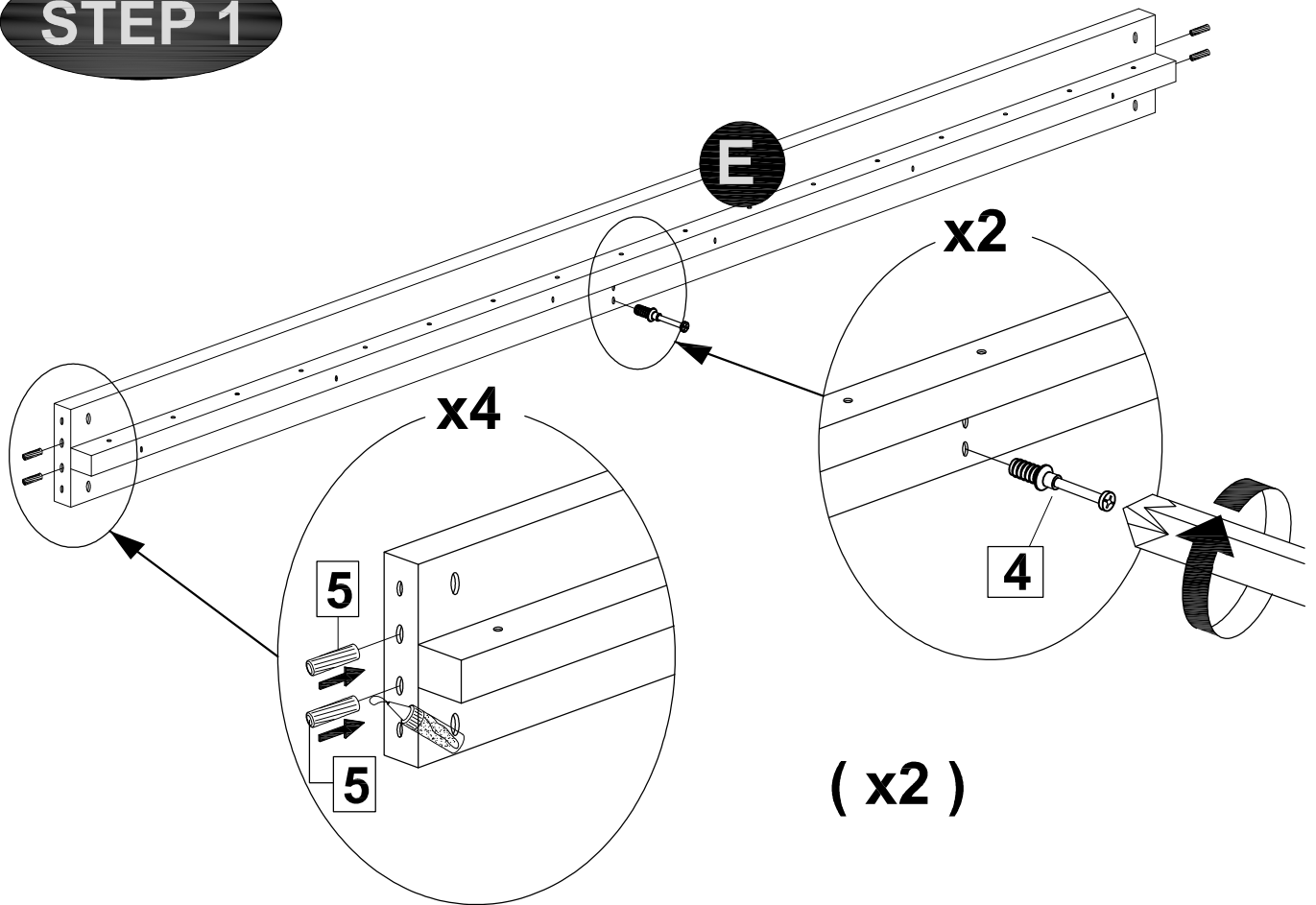
### Care and Maintenance of your Furniture

- Please periodically check all fittings are re-tighten as necessary.
- To clean your item, please use a damp cloth and wipe clean.
- Please do not jump on your furniture.
- Never allow any kind of liquid to remain on your furniture. Absorption can cause wood to warp or finishes to de-laminate.
- This bed conforms to BS EN 1725 : 1998
- This bed should not be placed too close to other furniture or windows, and should be placed either tight against a wall or have a gap of 300mm between the wall and the side of the bed.
- **WARNING.** Do not place this bed near heat sources, windows and other furniture.
- **WARNING.** Do not use this bed if any parts is broken, torn or missing .
- **WARNING.** Assembly by adult only.

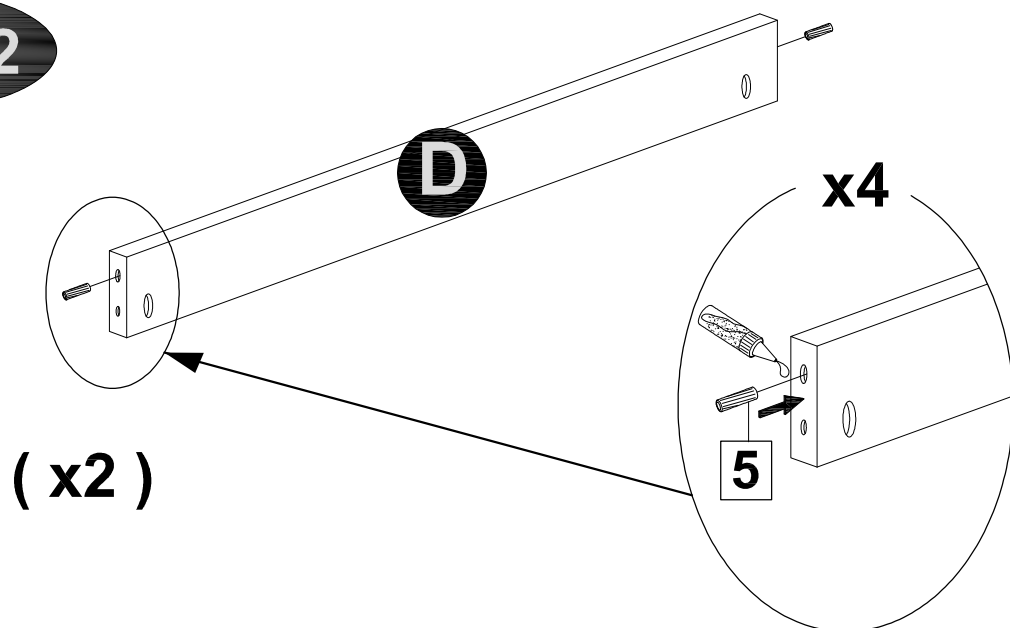
MODEL NAME:

# INDIANA QUEEN BED FRAME

## STEP 1



## STEP 2



# INDIANA QUEEN BED FRAME

**STEP 3**

**B**

**A**

**x6**

**14**

**OPTIONAL**

# STEP 4

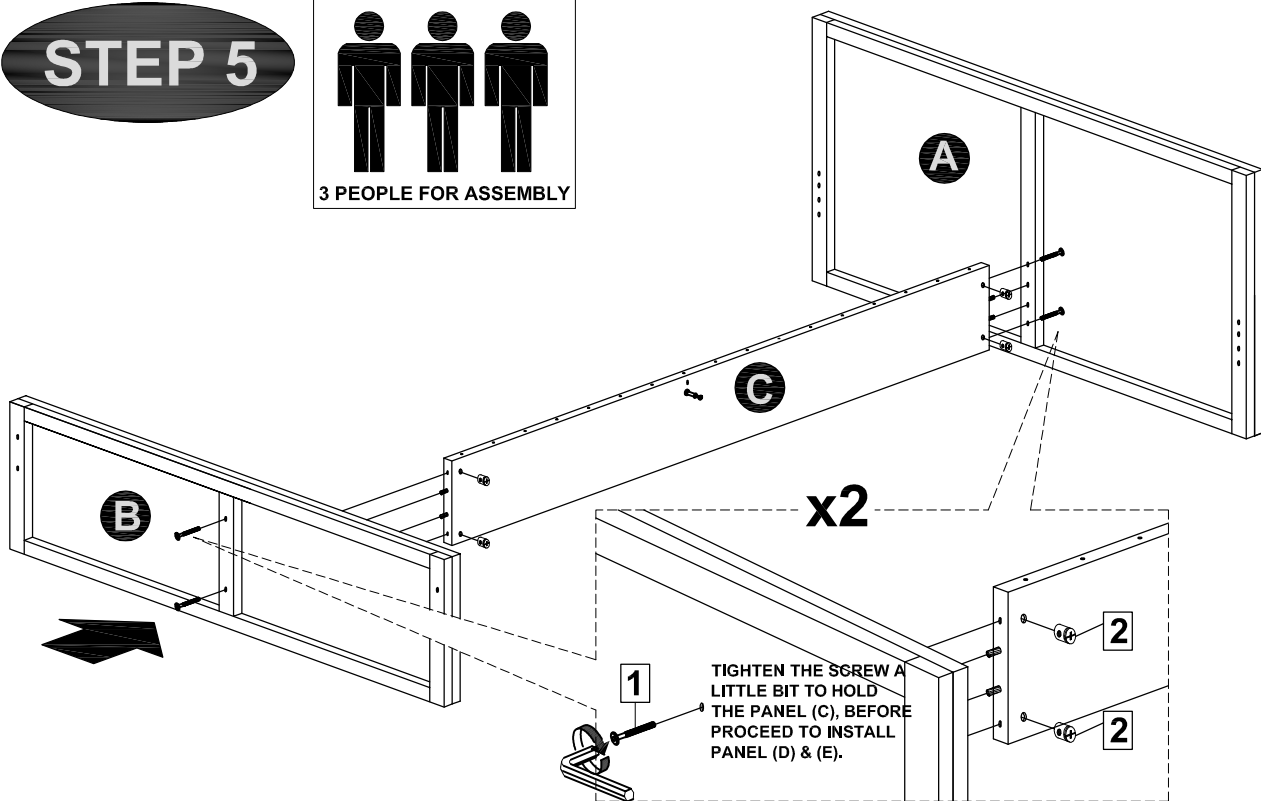
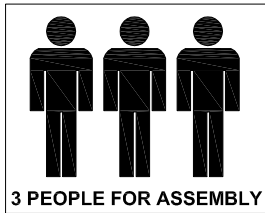
The diagram illustrates the installation of a long horizontal panel, labeled **C**. The panel is shown being attached to a wall or another panel. Key components and steps include:

- Panel C:** A long horizontal panel with pre-drilled holes.
- Fasteners:** Screws are used to secure the panel. One screw is shown being inserted into a hole in the panel.
- Optional Component:** A circular component, possibly a light or sensor, is shown being attached to the panel. It is labeled **OPTIONAL** and **x3**, indicating three are needed.
- Component 4:** A long, thin component, possibly a cable or wire, is shown being attached to the panel. It is labeled **4** and **x2**, indicating two are needed.
- Component 5:** A small, rectangular component is shown being attached to the panel. It is labeled **5** and **x4**, indicating four are needed.
- Component 14:** A small, circular component is shown being attached to the panel. It is labeled **14** and **x3**, indicating three are needed.

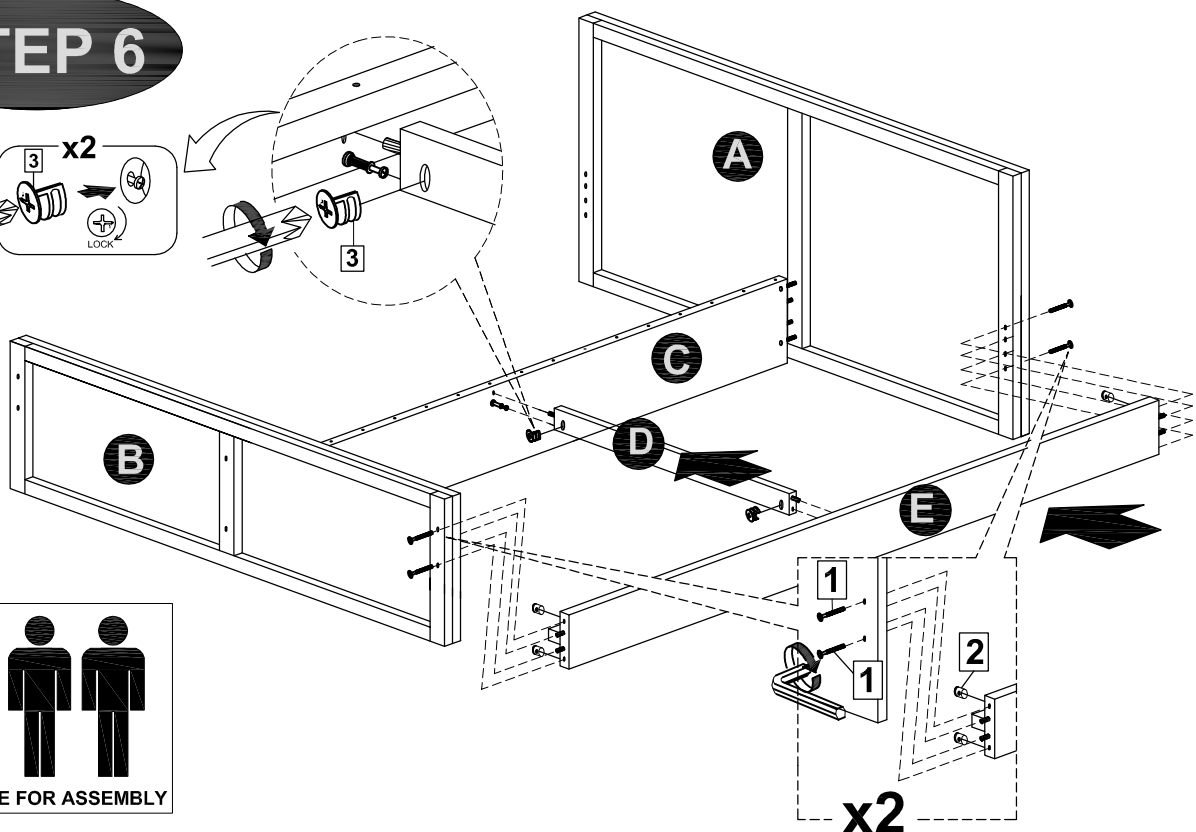
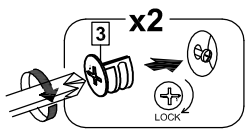
MODEL NAME:

# INDIANA QUEEN BED FRAME

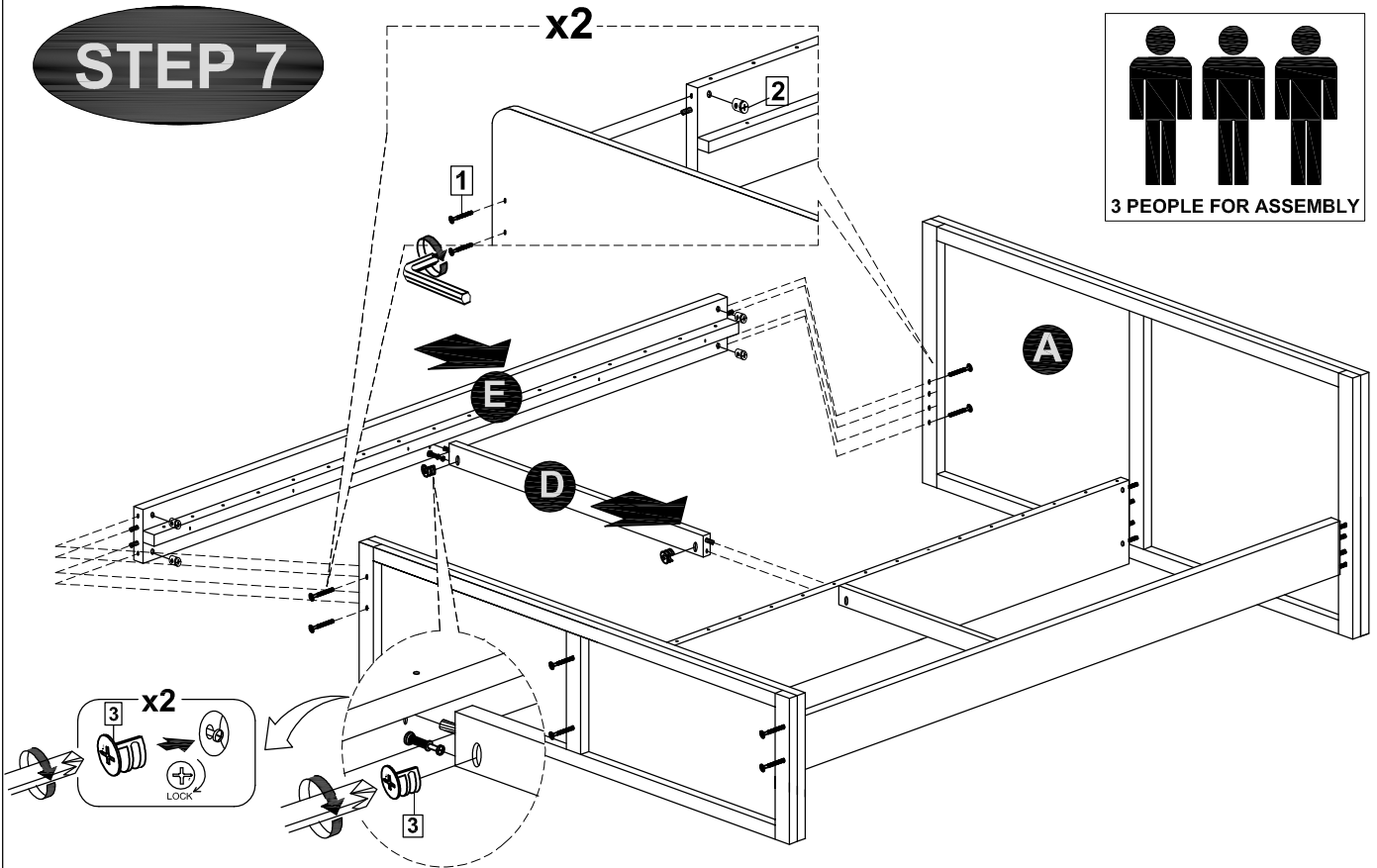
## STEP 5



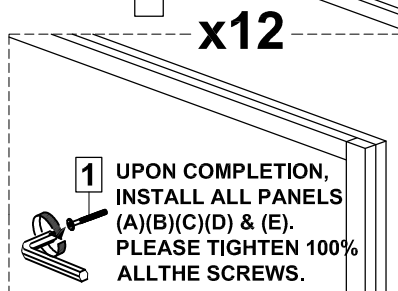
## STEP 6



## STEP 7



## STEP 8

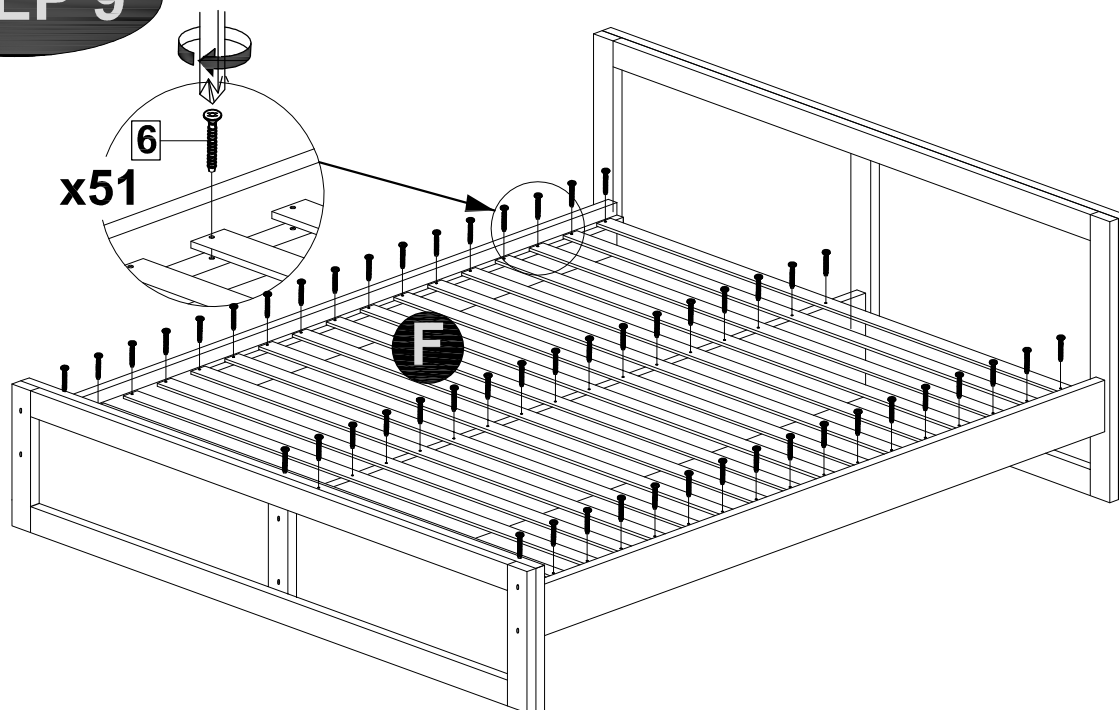




**MODEL NAME:**

**INDIANA  
QUEEN BED FRAME**

**STEP 9**



**WARNING : DO NOT REMOVED UPON COMPLETED INSTALLATION  
(DO NOT DISMANTLED)**

**STEP 10**

