

**MODEL NAME:**

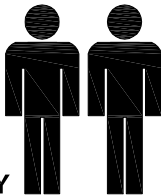
**INDIANA**

**TALLBOY 4 DRAWER**

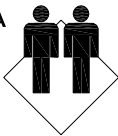
**1.5hr**

**APPROXIMATE ASSEMBLY TIME**

**2 PERSONS OF ASSEMBLY**

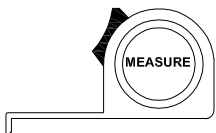
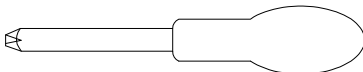
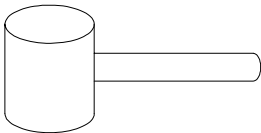


**FLOOR AREA**  
**1.2M X 1.5M**

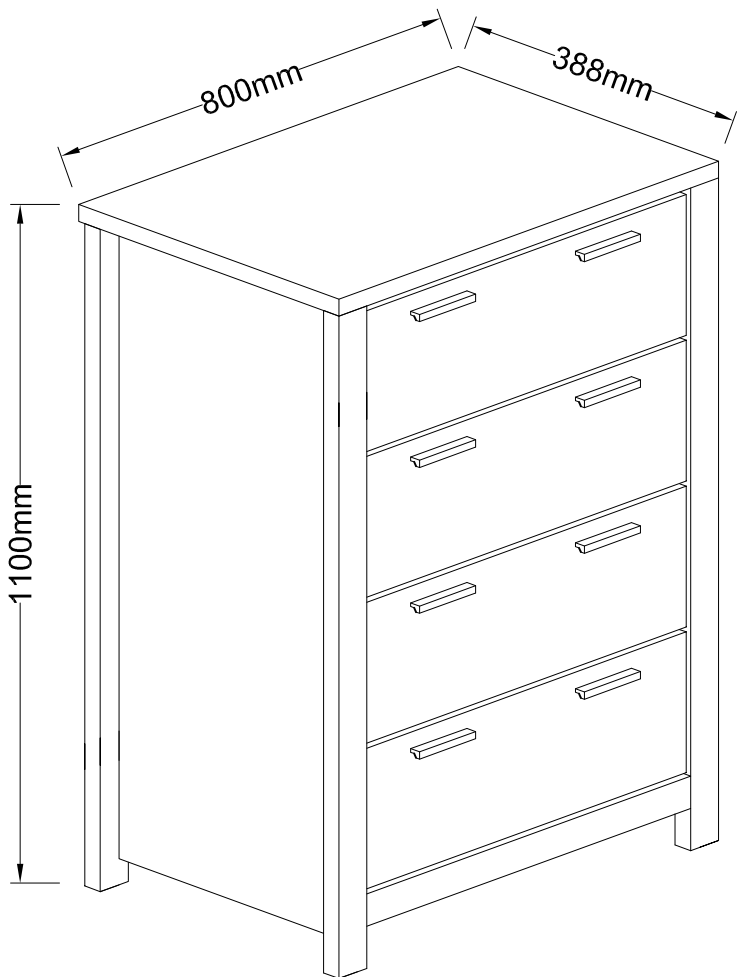


**REQUIRED ASSEMBLY SPACE**

**REQUIRED ASSEMBLY TOOLS**



**ASSEMBLED DIMENSIONS**



**NOTE : THE MAXIMUM WEIGHT THIS PRODUCT CAN HOLD UP TO 25 KGS.**

	<b>MODEL NAME:</b> <b>INDIANA</b> <b>TALLBOY 4 DRAWER</b>
--	---

**Top Tips before you start :**

1. Please check that all parts are present before you start the assembly of your furniture.
2. For ease and speed of assembly, we recommend that before you commence each step of the assembly, that you identify all the parts required for that step.
3. For larger items, please ensure that you have sufficient space and people ( as indicated on page 1 ) to assemble your product safely.
4. We recommend that, where possible, all items are assembled near to the area in which they will be placed in use, to avoid moving the product unnecessarily once assembled.
5. For the protection of your furniture, we recommend that the product is placed on a protected surface during assembly to prevent any damage.
6. During assembly please take care not to over-tighten any fittings, as this may damage the product.
7. Always place the product on a flat, steady and stable surface.
8. Do not sit or stand on the product. Do not use the product as a stepladder.
9. This product is intended for indoor, household use only as it is non industrial product.

**Care and Maintenance of your Furniture**

- Please periodically check all fittings and re-tighten as necessary.
- To clean your item, please use a damp cloth and wipe clean.
- Never allow any kind of liquid to remain on your furniture. Absorption can cause wood to warp or finishes to de-laminate.
- Please do not place hot items (e.g. Hot drinks) directly on to the surface.
- Please do not drag and pull your furniture.

	<b>WARNING</b>	
--	----------------	--

We recommend you to fix the furniture to the wall with the enclosed safety straps to prevent it from tipping over if a child climbs or hangs on it. Different wall materials require different types of fixing devices, if you are uncertain about what type of screw or fitting to use, please contact your local hardware store.

It is undesirable to place objects of interest to children in view on this type of furniture item, as children may be tempted to climb to retrieve the objects the result that the furniture item may tip and cause injury or death.

Furniture items can tip under certain circumstances, especially when placed on carpet, uneven or sloping flooring or when subject to extreme use. Therefore care must be taken especially where small children can access any chests of drawers or bookcases or similar furniture items.

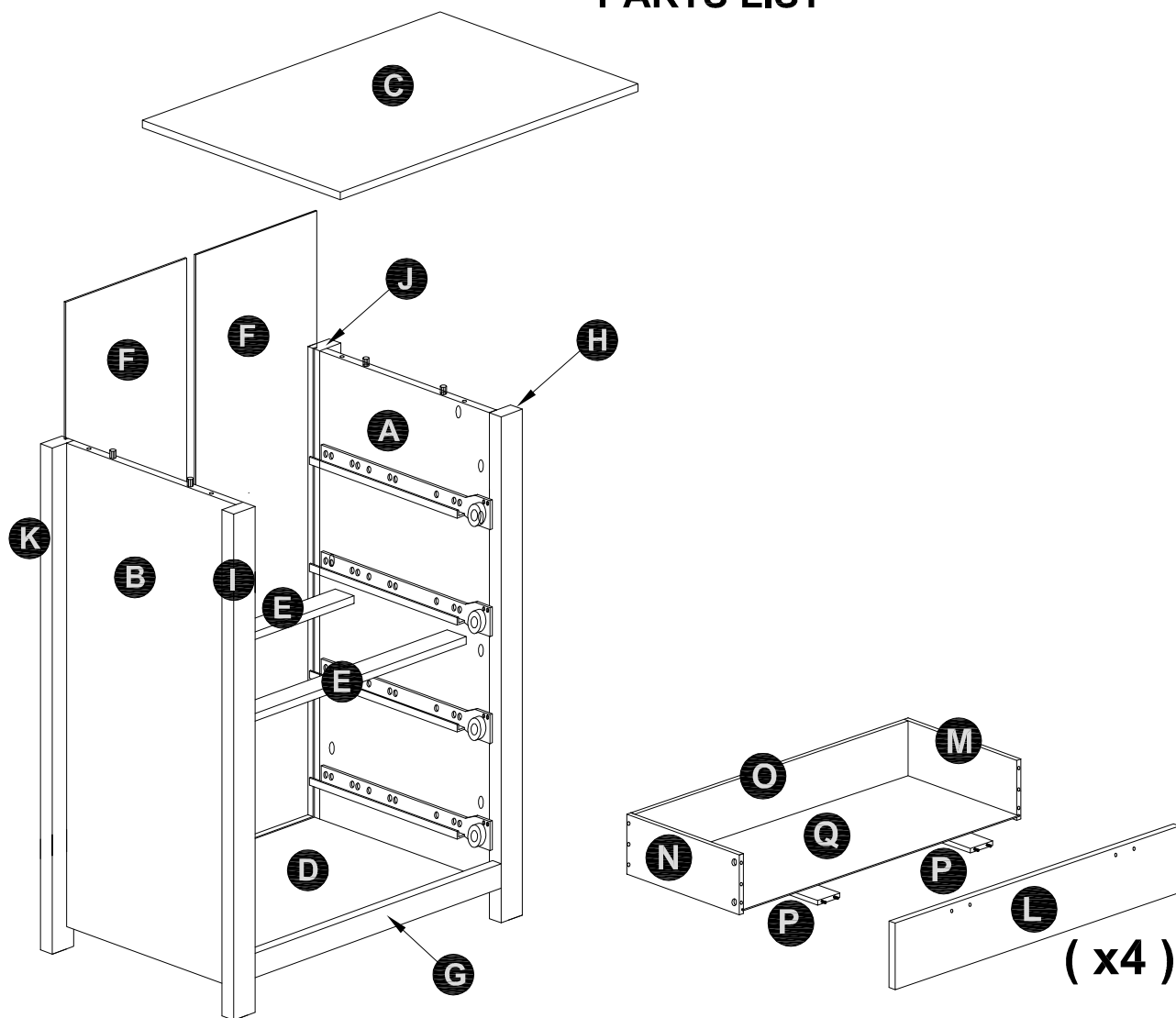
**MODEL NAME:**

# INDIANA

## TALLBOY 4 DRAWER

NO.	PART LIST	QTY	NO.	PART LIST	QTY
(A)	RIGHT SIDE PANEL	1	(L)	DRAWER FRONT	4
(B)	LEFT SIDE PANEL	1	(M)	DRAWER RIGHT SIDE PANEL	4
(C)	TOP PANEL	1	(N)	DRAWER LEFT SIDE PANEL	4
(D)	BOTTOM PANEL	1	(O)	DRAWER BACK PANEL	4
(E)	SUPPORT PANEL	2	(P)	DRAWER BOTTOM SUPPORT	8
(F)	BACK PANEL	2	(Q)	DRAWER BASE	4
(G)	FRONT PROFILE	1			
(H)	RIGHT FRONT LEG	1			
(I)	LEFT FRONT LEG	1			
(J)	RIGHT FRONT LEG	1			
(K)	LEFT FRONT LEG	1			

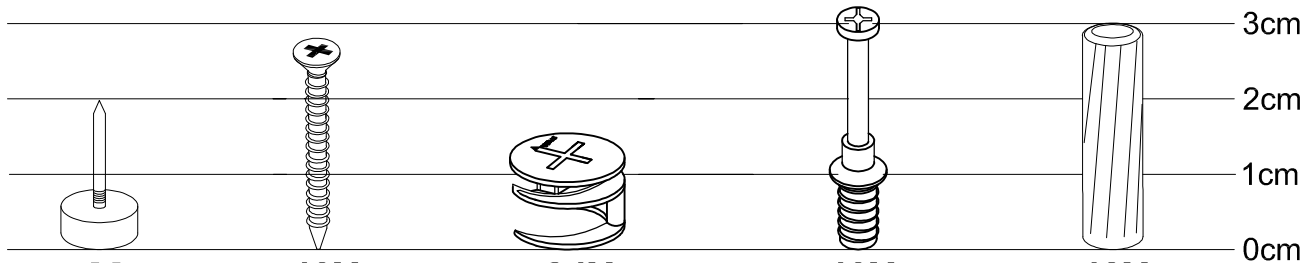
### PARTS LIST



MODEL NAME:

# INDIANA TALLBOY 4 DRAWER

## HARDWARE LIST



**5X**

**40X**

M3.5 x 25mm

**24X**

Dia.15mm

**40X**

M6.5

**48X**

Dia.6 x 30mm

**1**

LEG COVER

**2**

FLAT HEAD  
SCREW

**3**

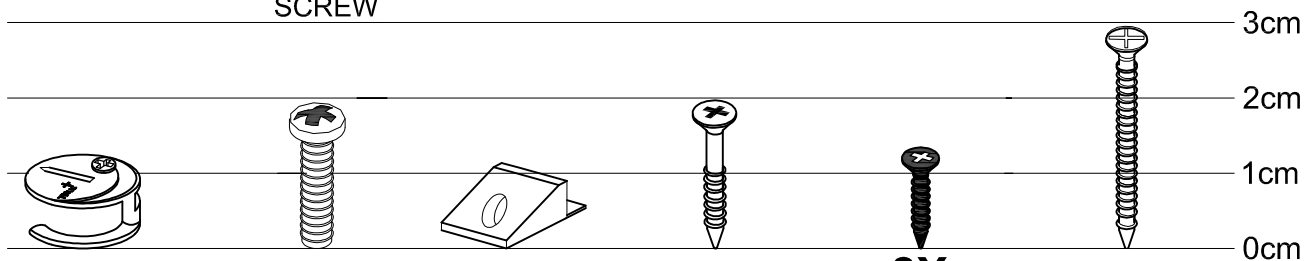
CAMLOCK

**4**

QUICKFIT

**5**

WOOD DOWEL



**16X**

Dia.15mm

**16X**

M4 x 19mm

**6X**

**6X**

M3 x 20mm

**8X**

M3.5 x 12mm

**1X**

M4 x 30mm

**6**

DRAWER  
CAMLOCK

**7**

PAN HEAD  
SCREW

**8**

BACKPLY  
STOPPER

**9**

FLAT HEAD  
SCREW

**10**

FLAT HEAD  
SCREW

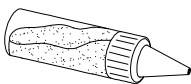
**11**

FLAT HEAD  
SCREW



**40X**

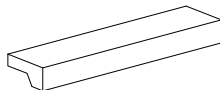
M3.5 x 14mm



**2X**

**13**

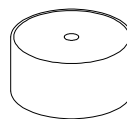
GLUE 10CC



**8X**

**14**

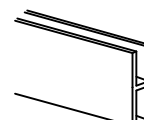
HANDLE



**1X**

**15**

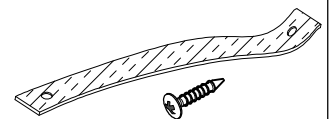
SOFA LEG



**1X**

**16**

PVC H



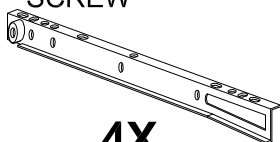
**2X**

**17**

ANTI TIP  
STRAP

**12**

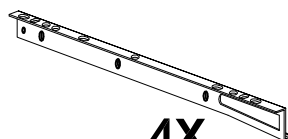
FLAT HEAD  
SCREW



**4X**

**18**

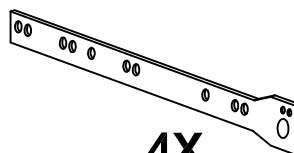
DRAWER RUNNER  
(RIGHT) -350mm



**4X**

**19**

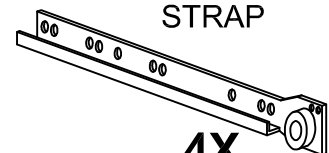
DRAWER RUNNER  
(LEFT)-350mm



**4X**

**20**

DRAWER RUNNER  
(LEFT)-350mm



**4X**

**21**

DRAWER RUNNER  
(RIGHT)-350mm

**MODEL NAME:**

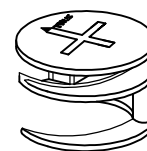
**INDIANA**

**TALLBOY 4 DRAWER**

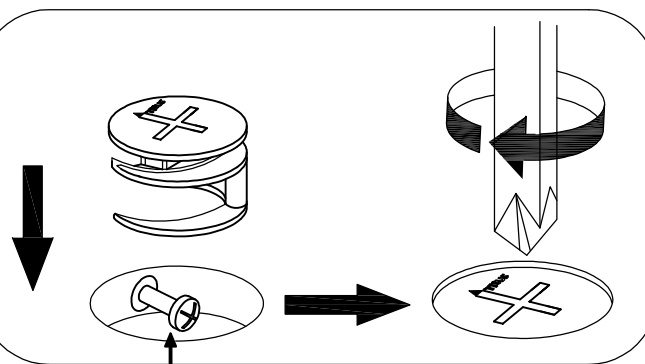
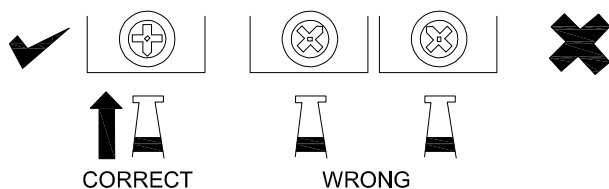
## **SPECIAL TIPS FOR FITTING CAM-LOCKS**

### **AND QUICKFIT**

**CAM-LOCK**

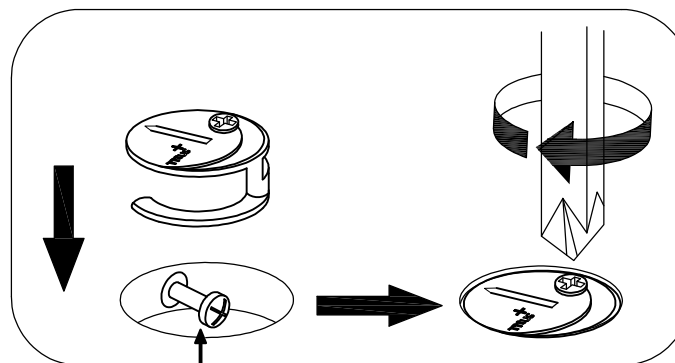


WHEN FITTING CAMLOCK  
ENSURE STARTING POSITION IS CORRECT  
BEFORE YOU INSERT CONNECTING QUICKFIT  
TURN CLOCKWISE UNTIL SECURE



**Quickfit head needs to be in centre**

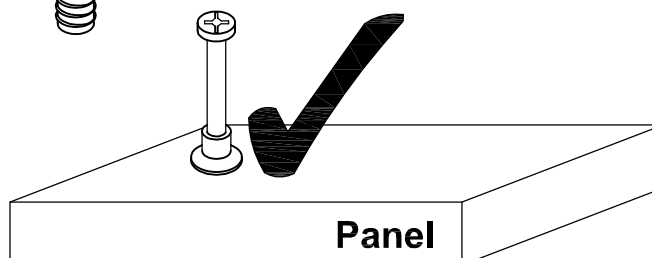
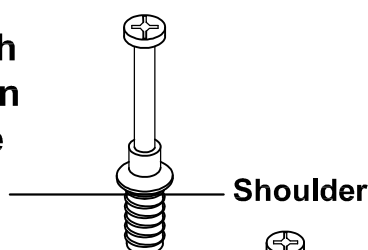
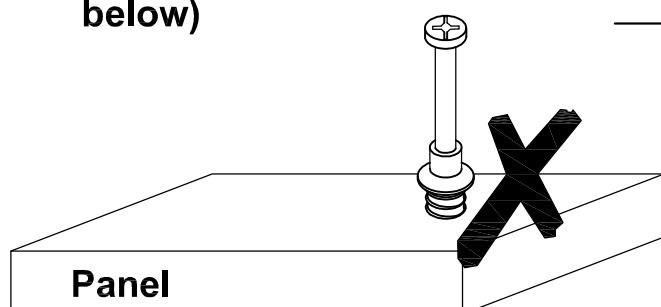
**DRAWER**  
**CAM-LOCK**



**Quickfit head needs to be in centre**

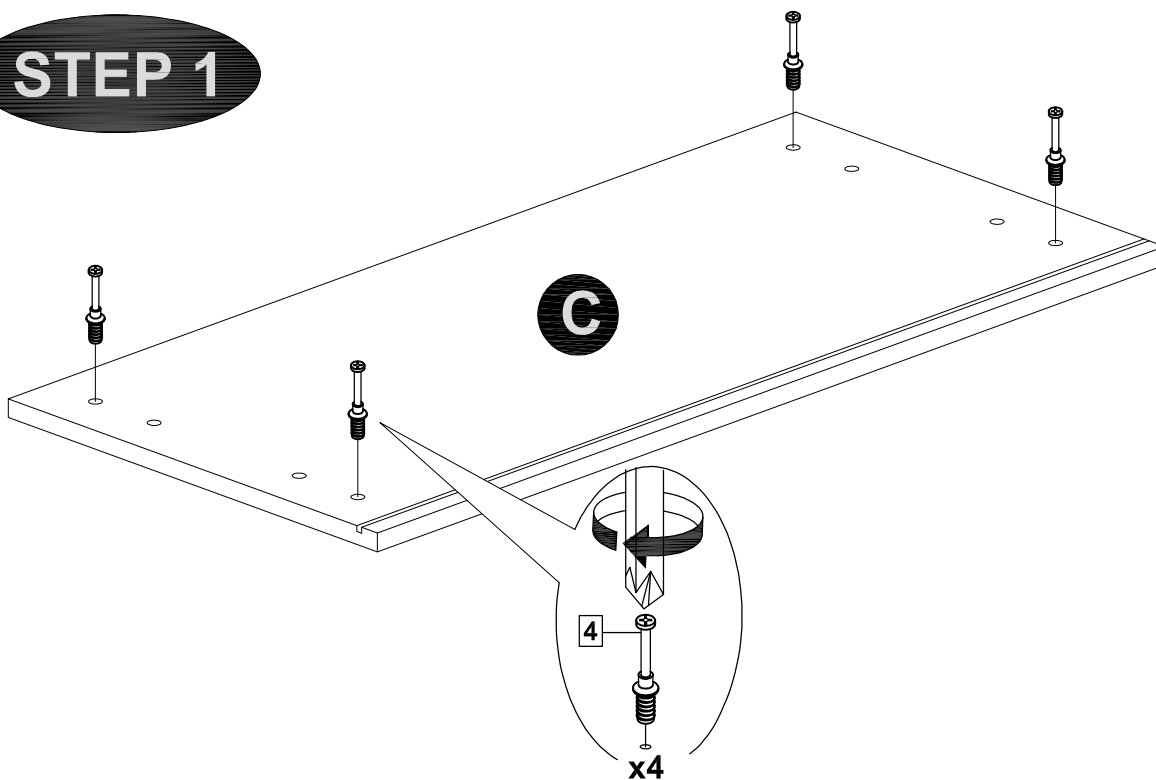
### **QUICKFIT**

**Tighten until shoulder is flush with panel. Do not overtighten or undertighten (see example below)**

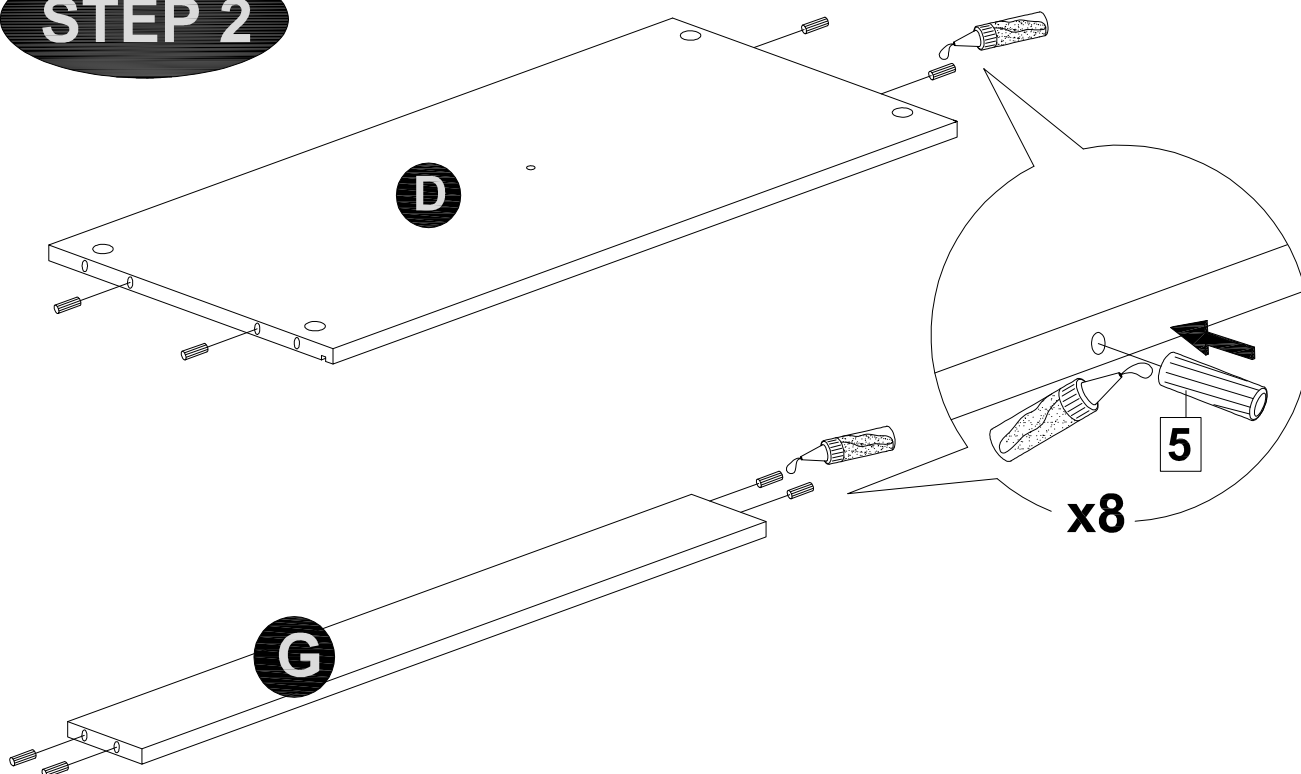


MODEL NAME: **INDIANA**  
**TALLBOY 4 DRAWER**

**STEP 1**

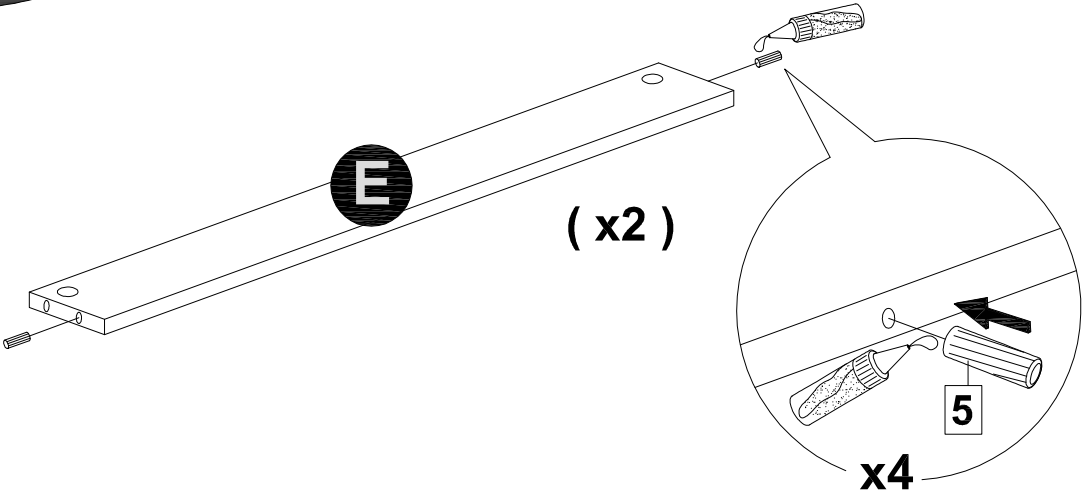


**STEP 2**

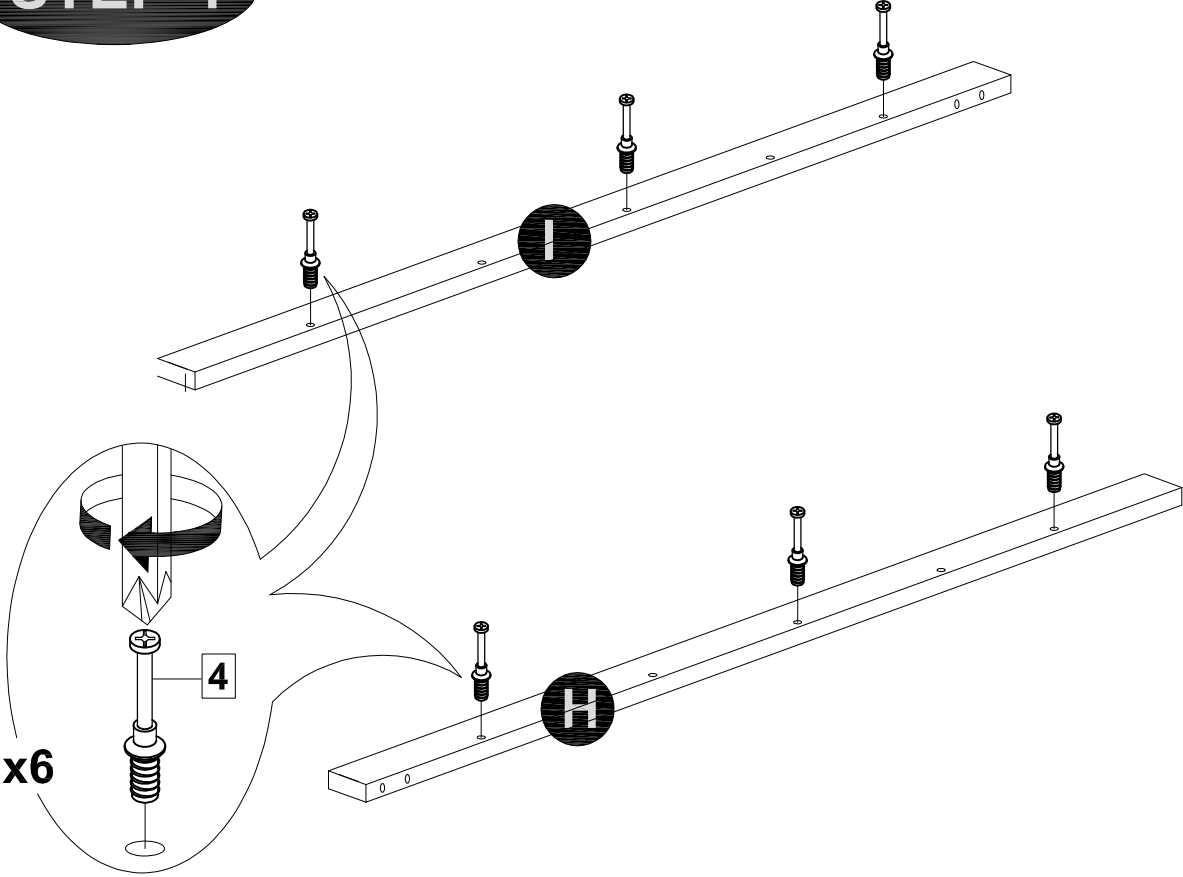


MODEL NAME: **INDIANA**  
**TALLBOY 4 DRAWER**

**STEP 3**



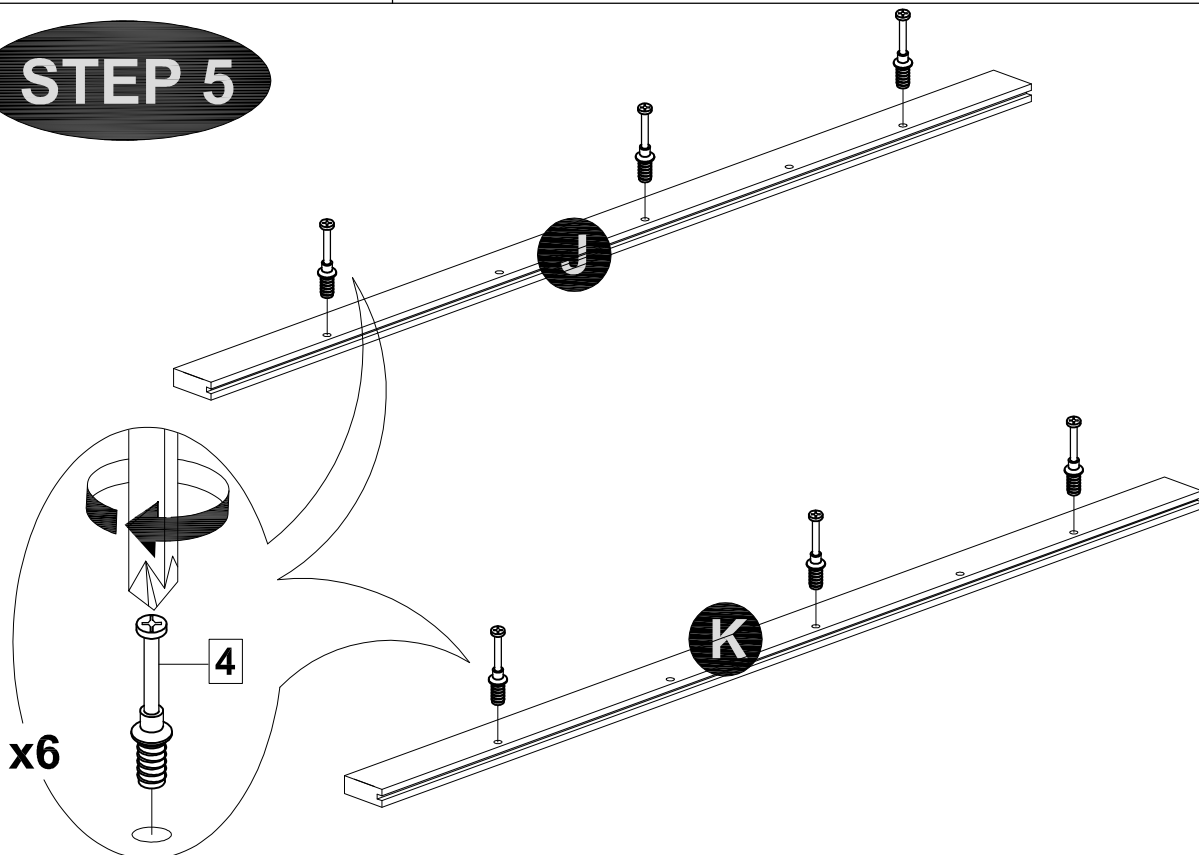
**STEP 4**



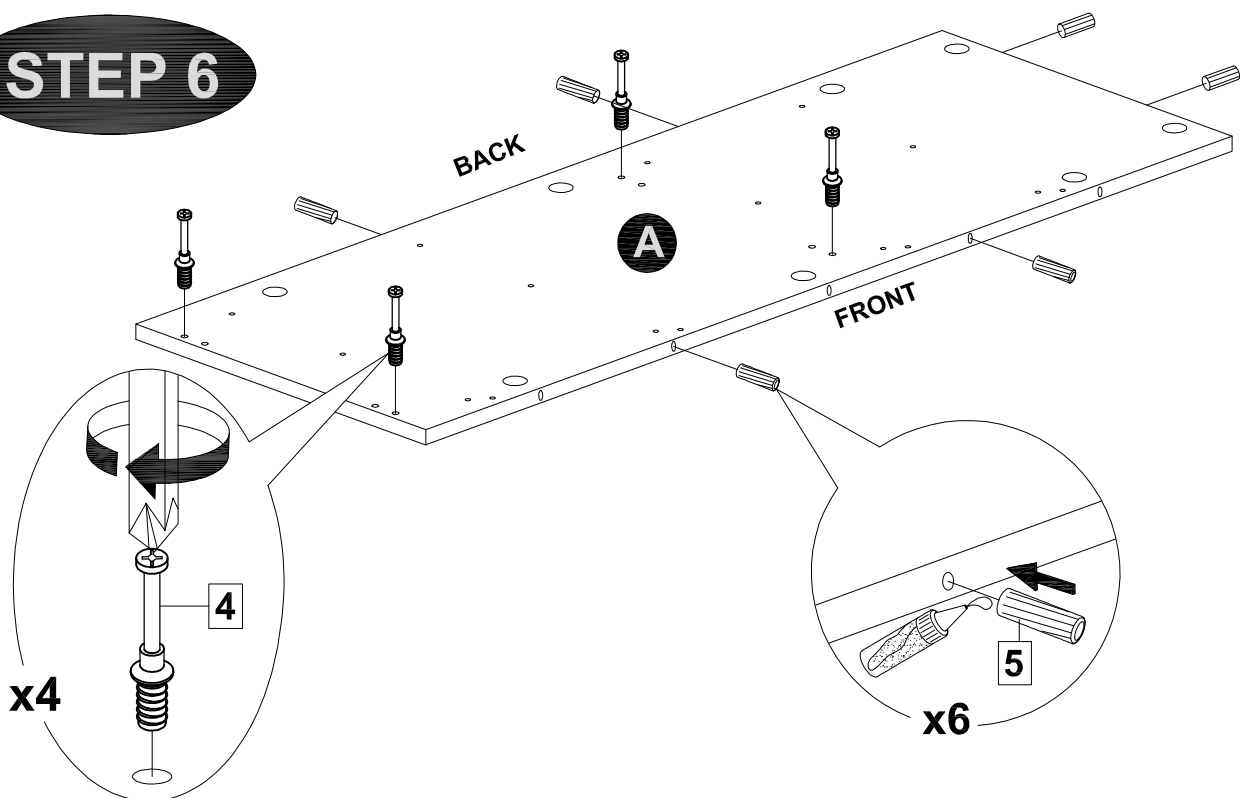
MODEL NAME:

# INDIANA TALLBOY 4 DRAWER

## STEP 5



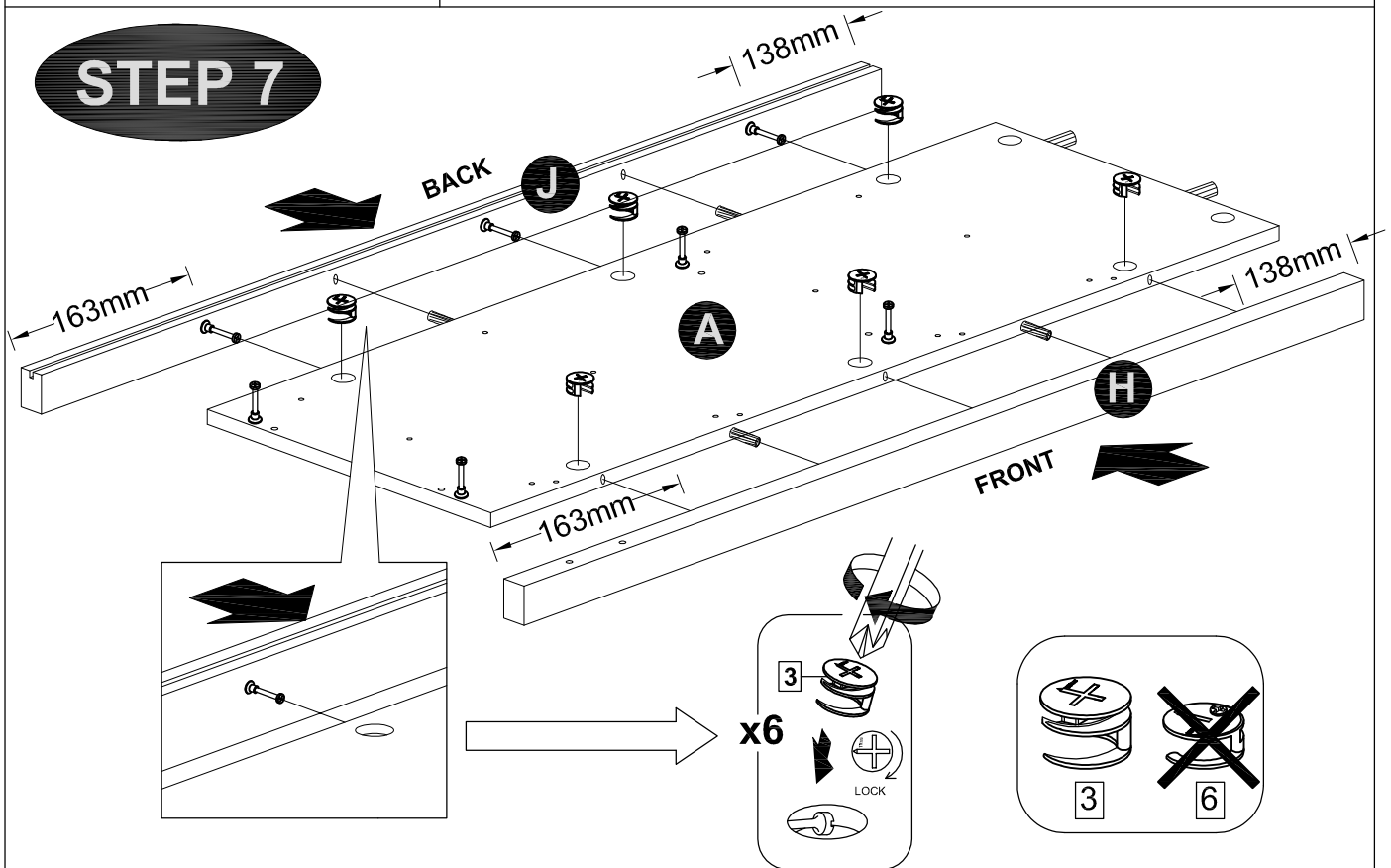
## STEP 6



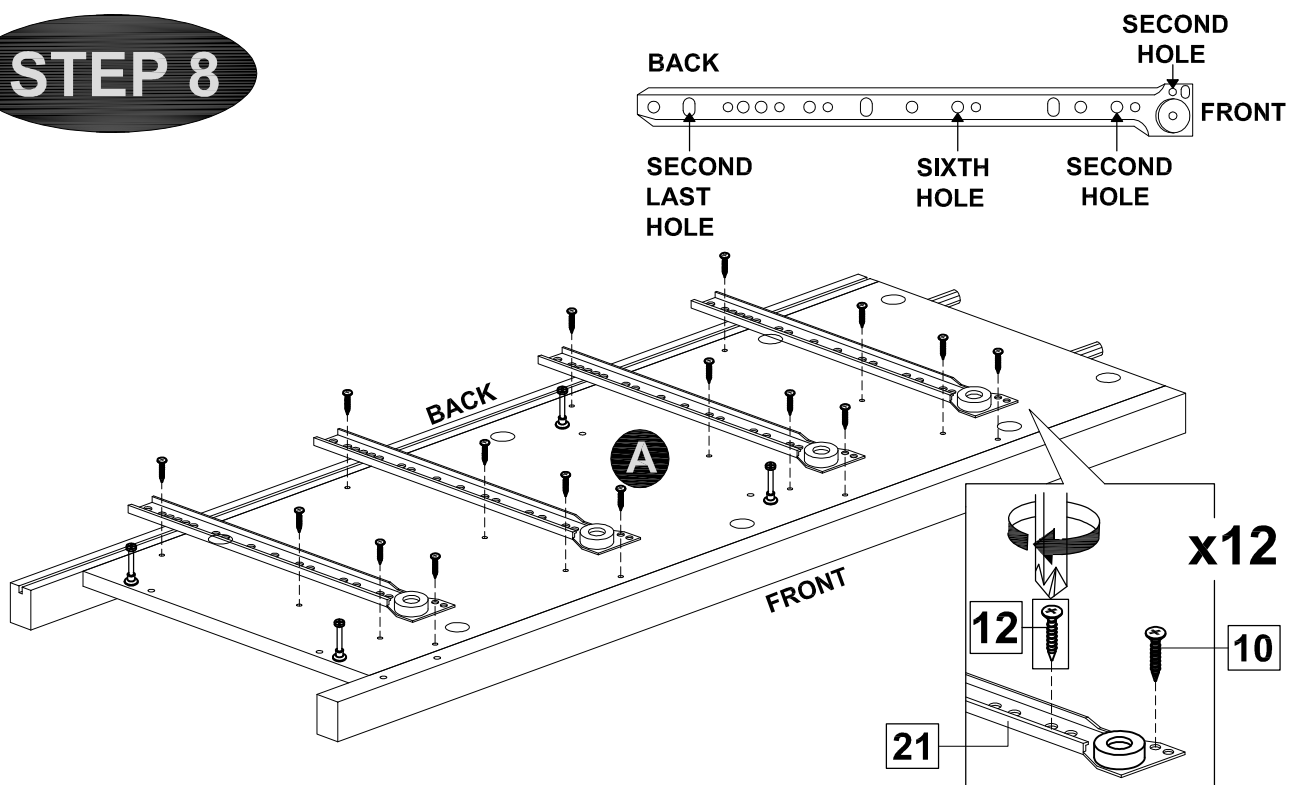


MODEL NAME: **INDIANA**  
**TALLBOY 4 DRAWER**

**STEP 7**

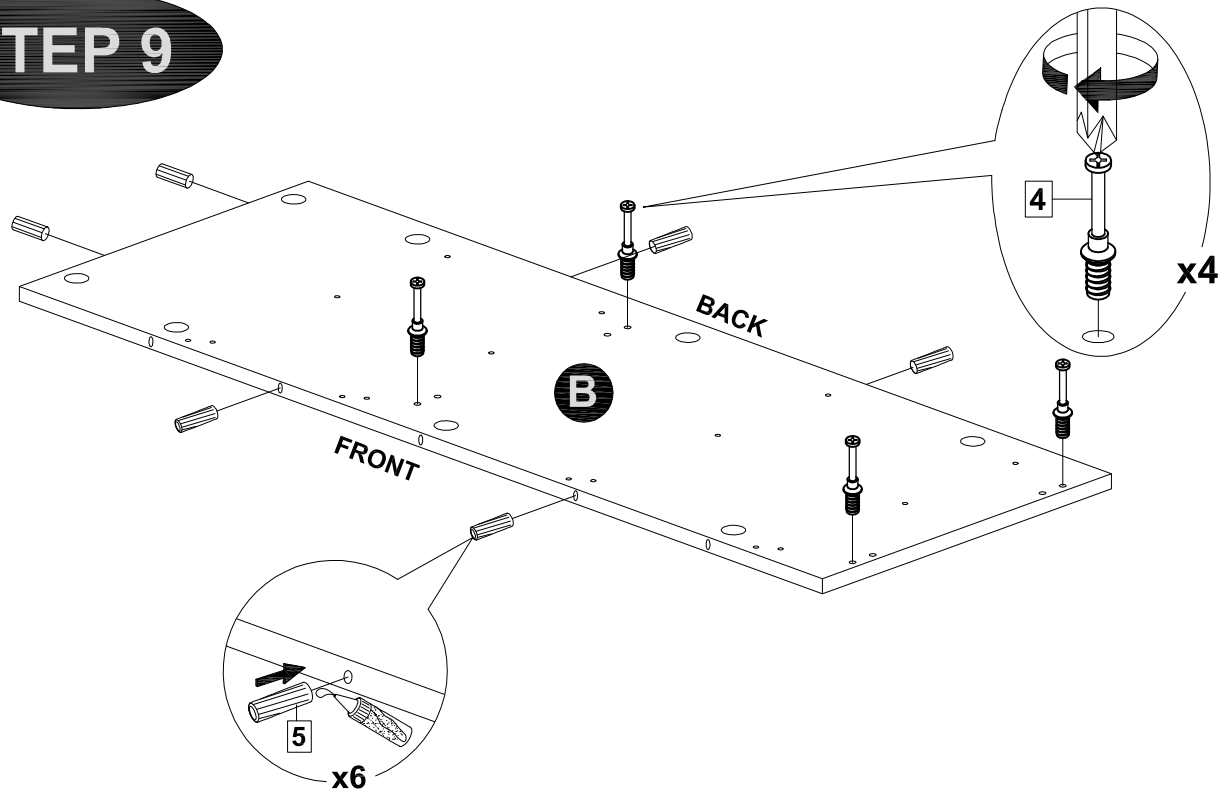


**STEP 8**

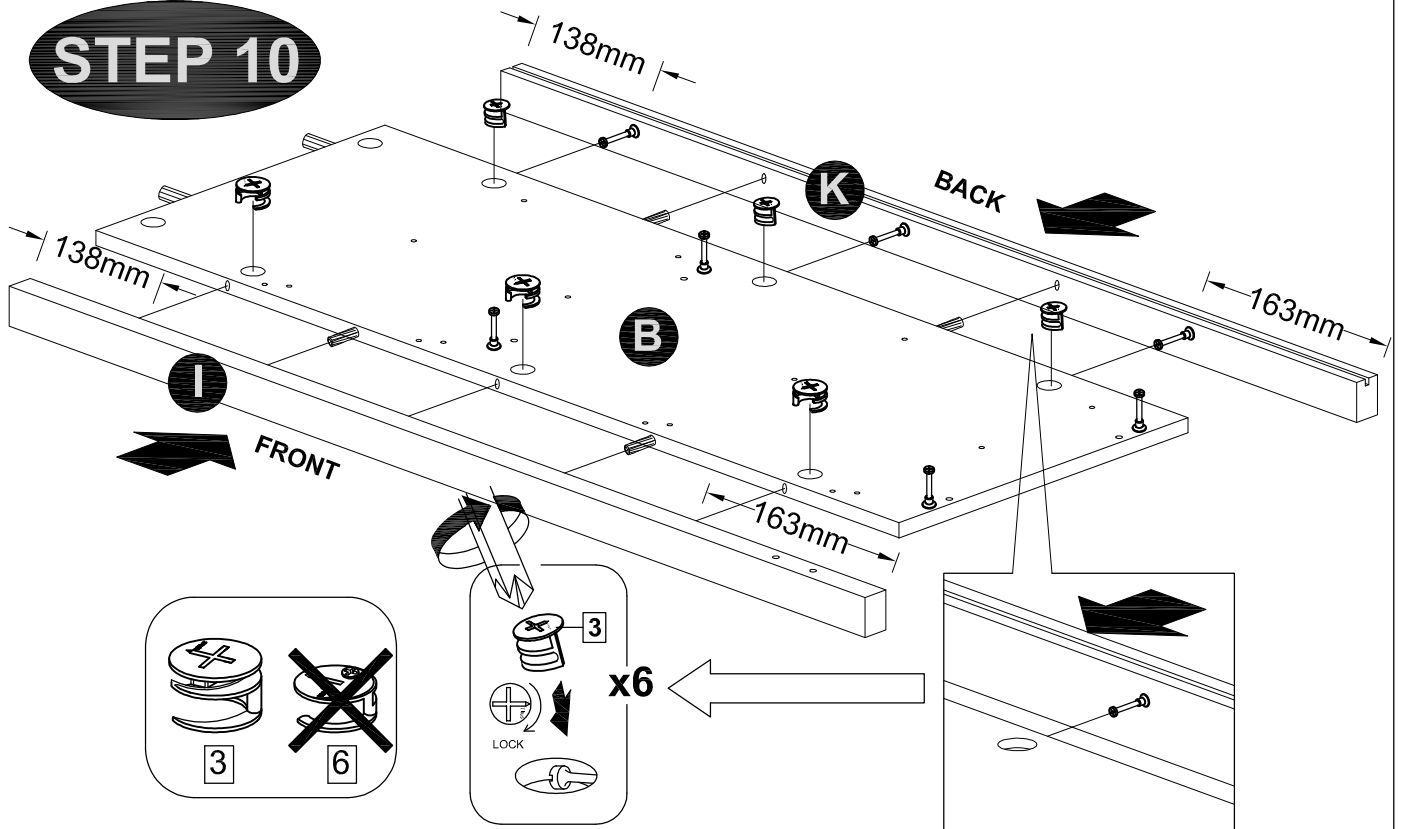


**MODEL NAME: INDIANA  
TALLBOY 4 DRAWER**

**STEP 9**

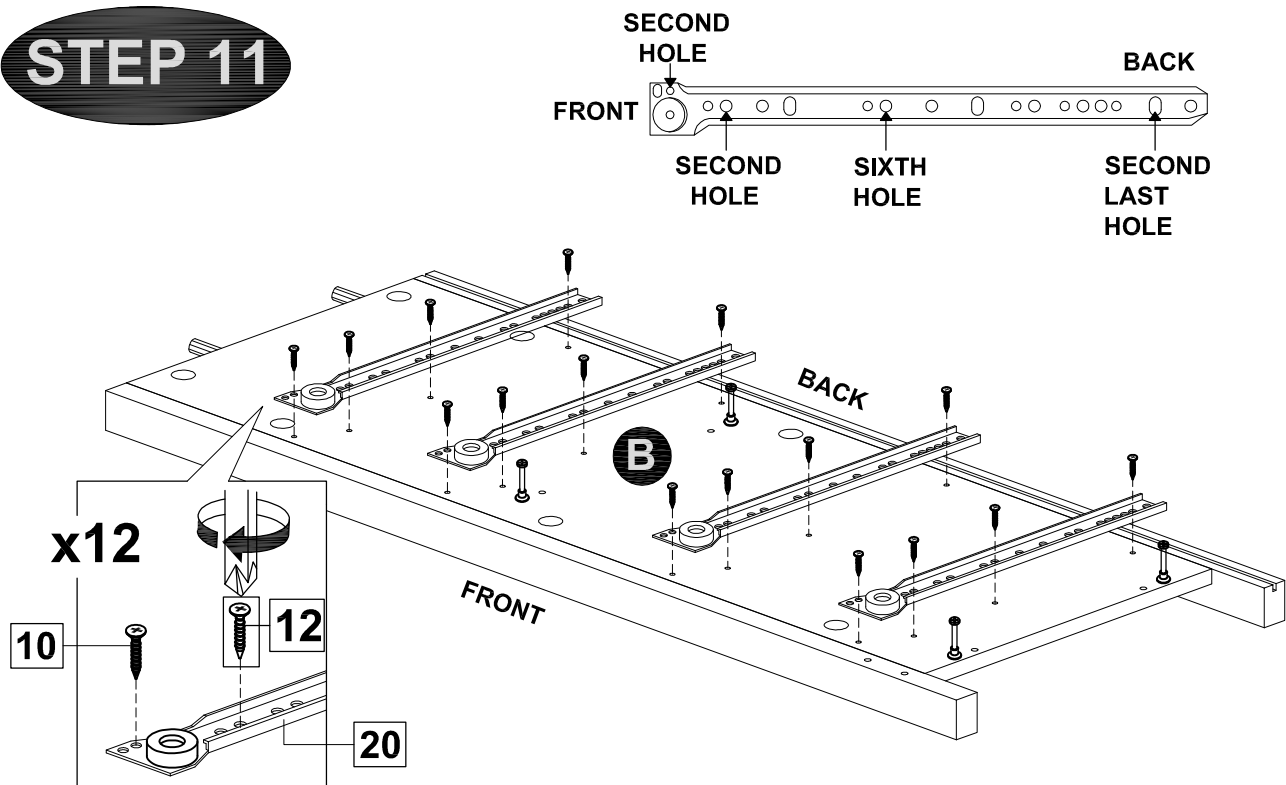


**STEP 10**

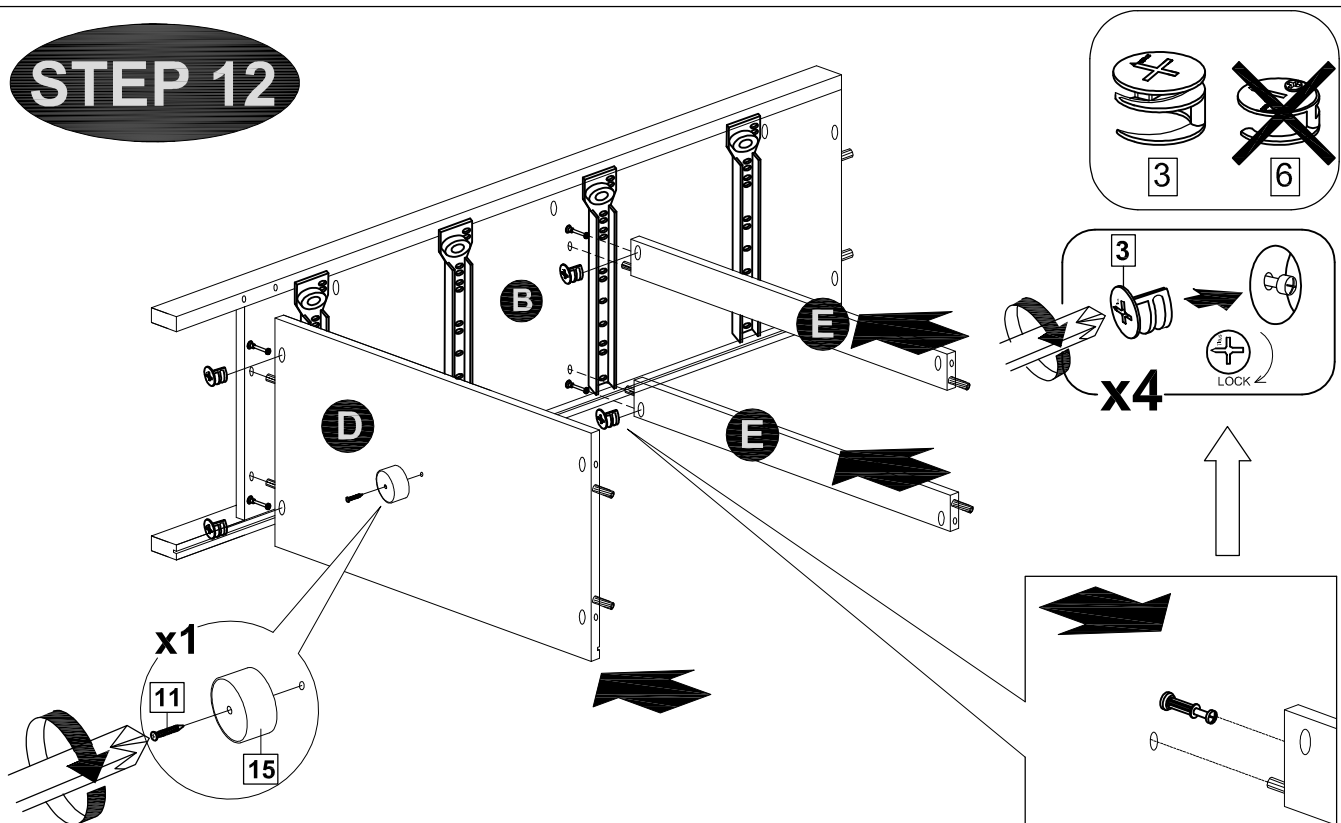


MODEL NAME: **INDIANA**  
**TALLBOY 4 DRAWER**

**STEP 11**



**STEP 12**

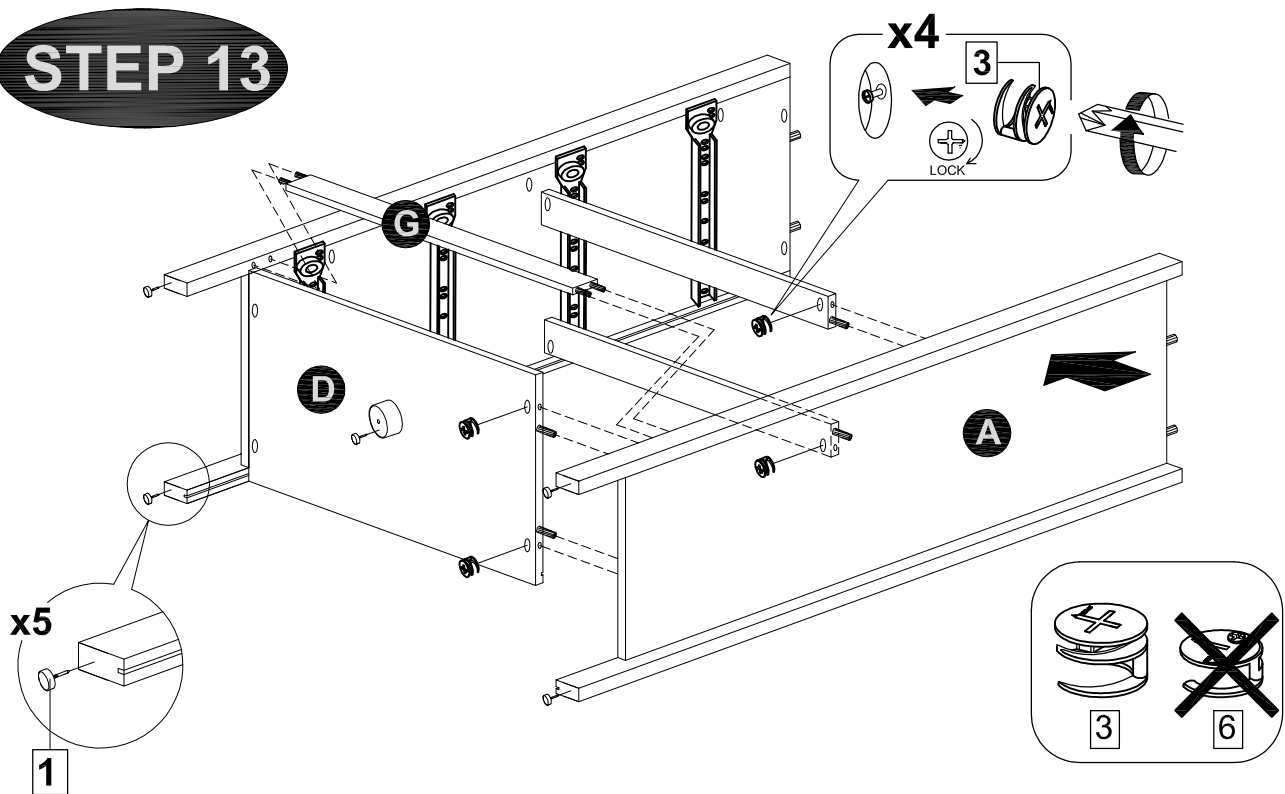


**MODEL NAME:**

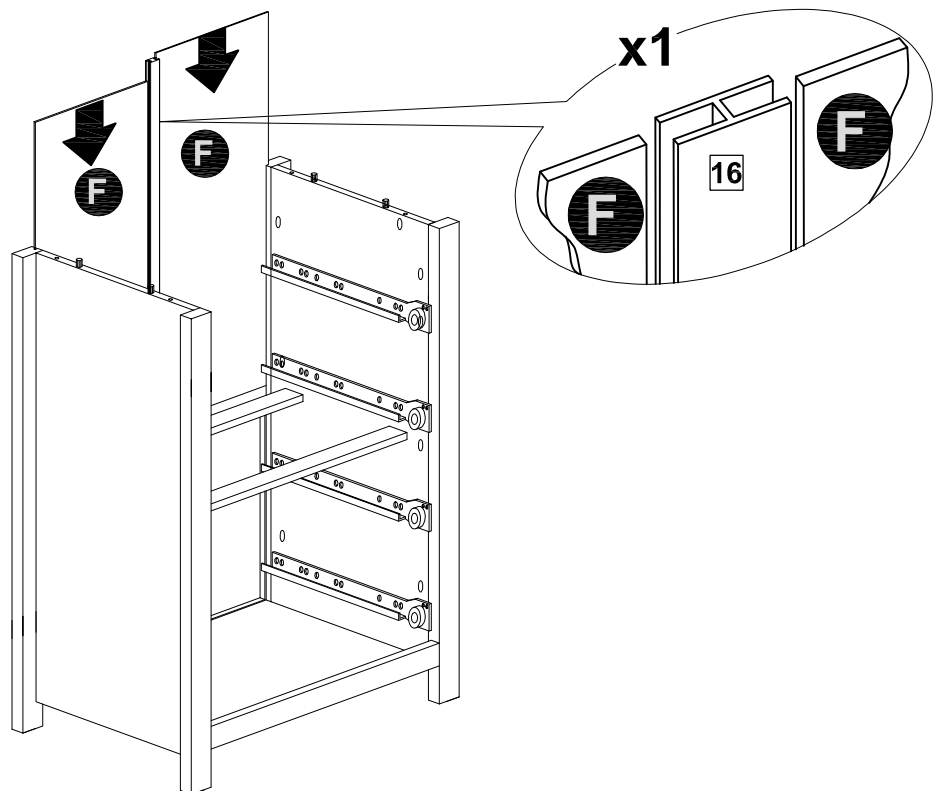
**INDIANA**

**TALLBOY 4 DRAWER**

**STEP 13**

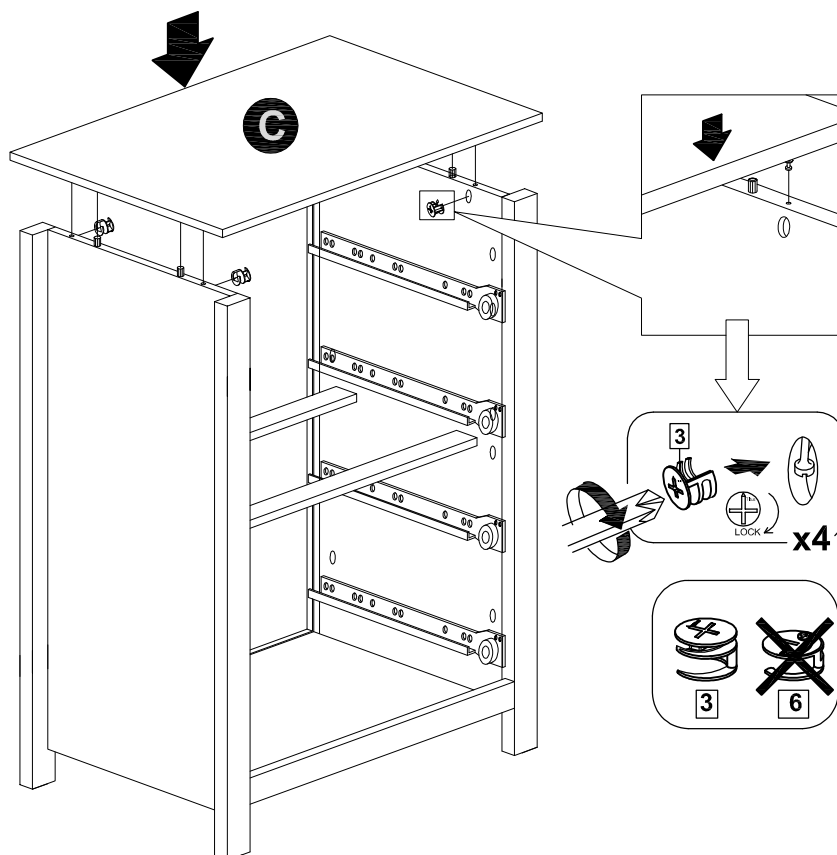


**STEP 14**

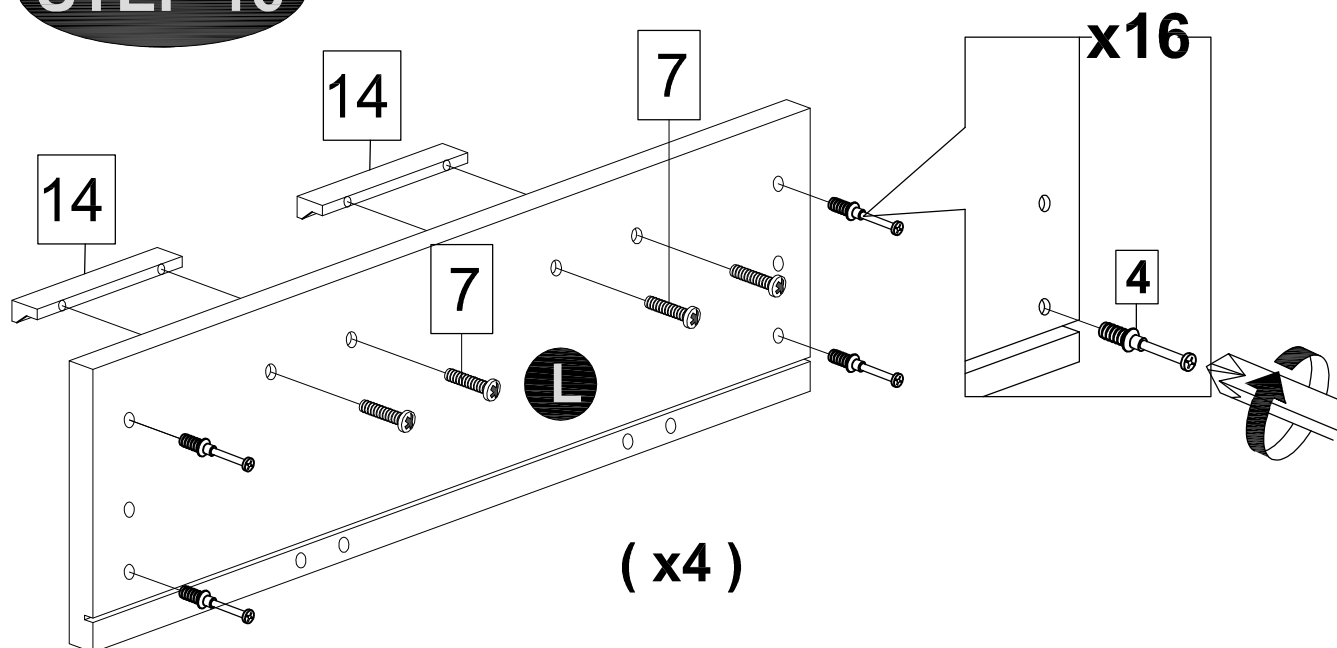


MODEL NAME: **INDIANA**  
**TALLBOY 4 DRAWER**

**STEP 15**

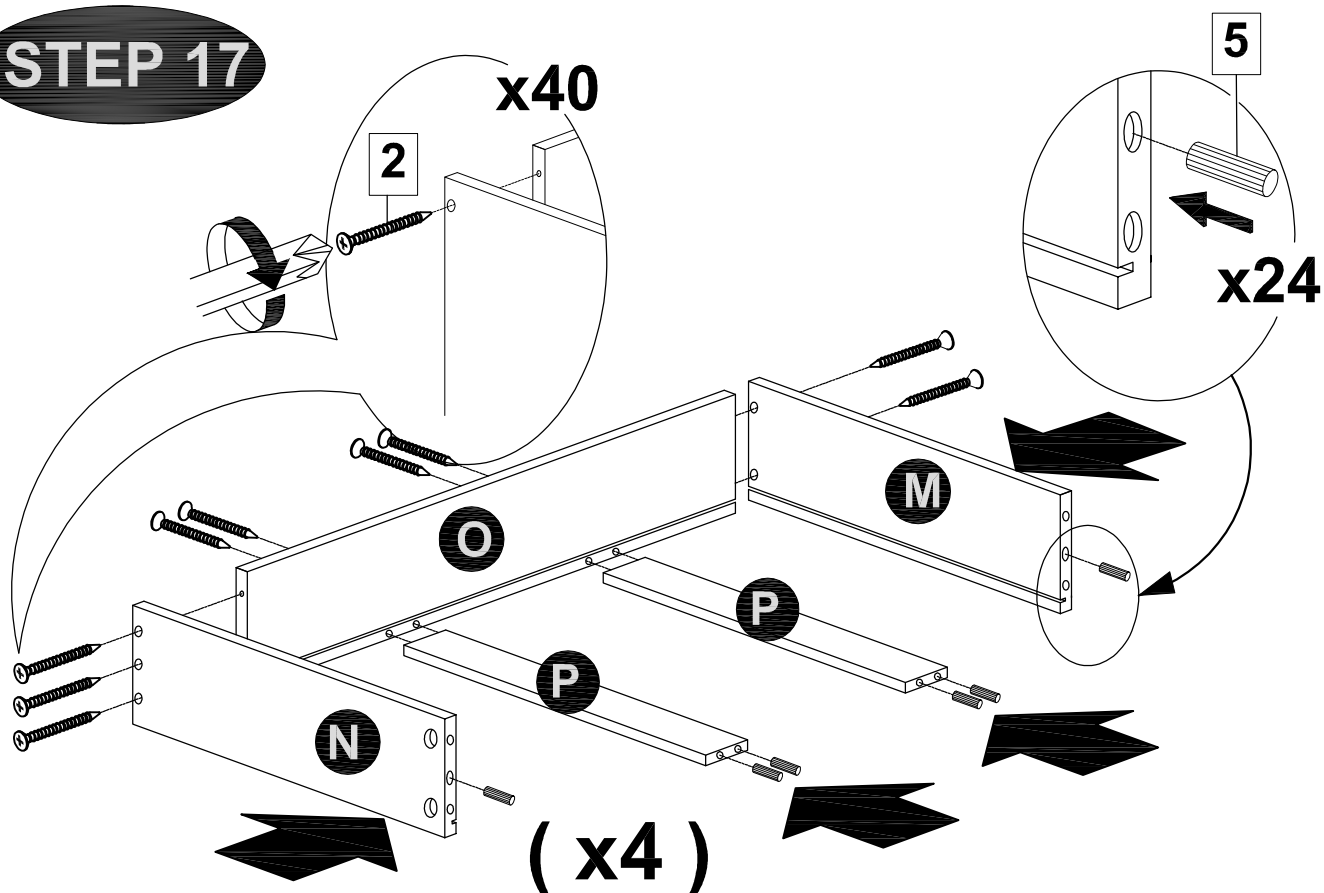


**STEP 16**

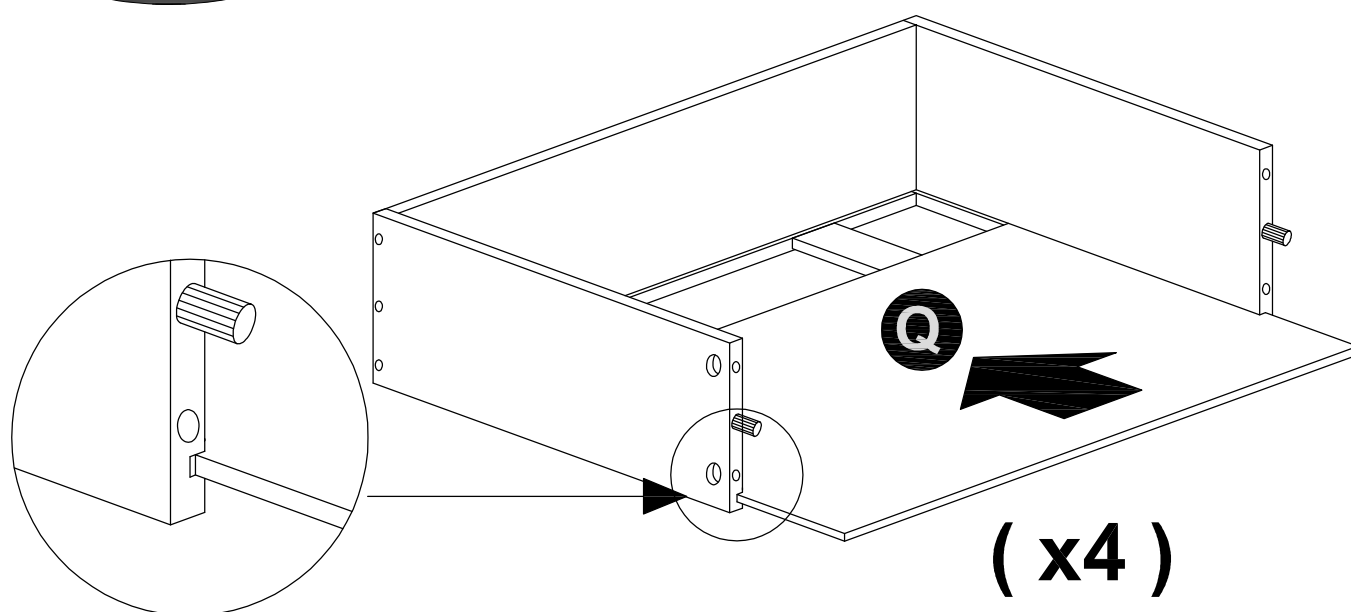


MODEL NAME: **INDIANA**  
**TALLBOY 4 DRAWER**

**STEP 17**



**STEP 18**

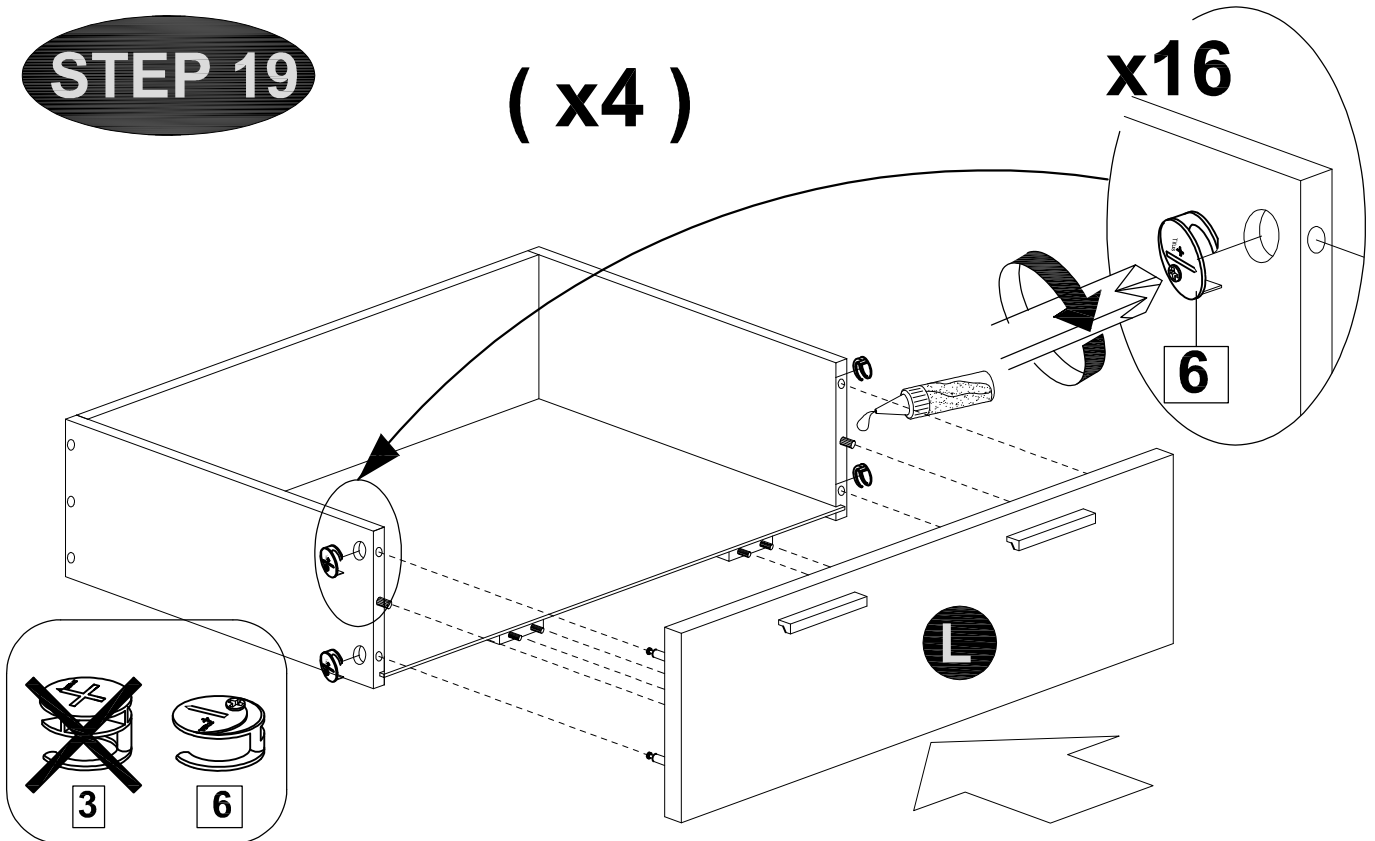


MODEL NAME: **INDIANA**  
**TALLBOY 4 DRAWER**

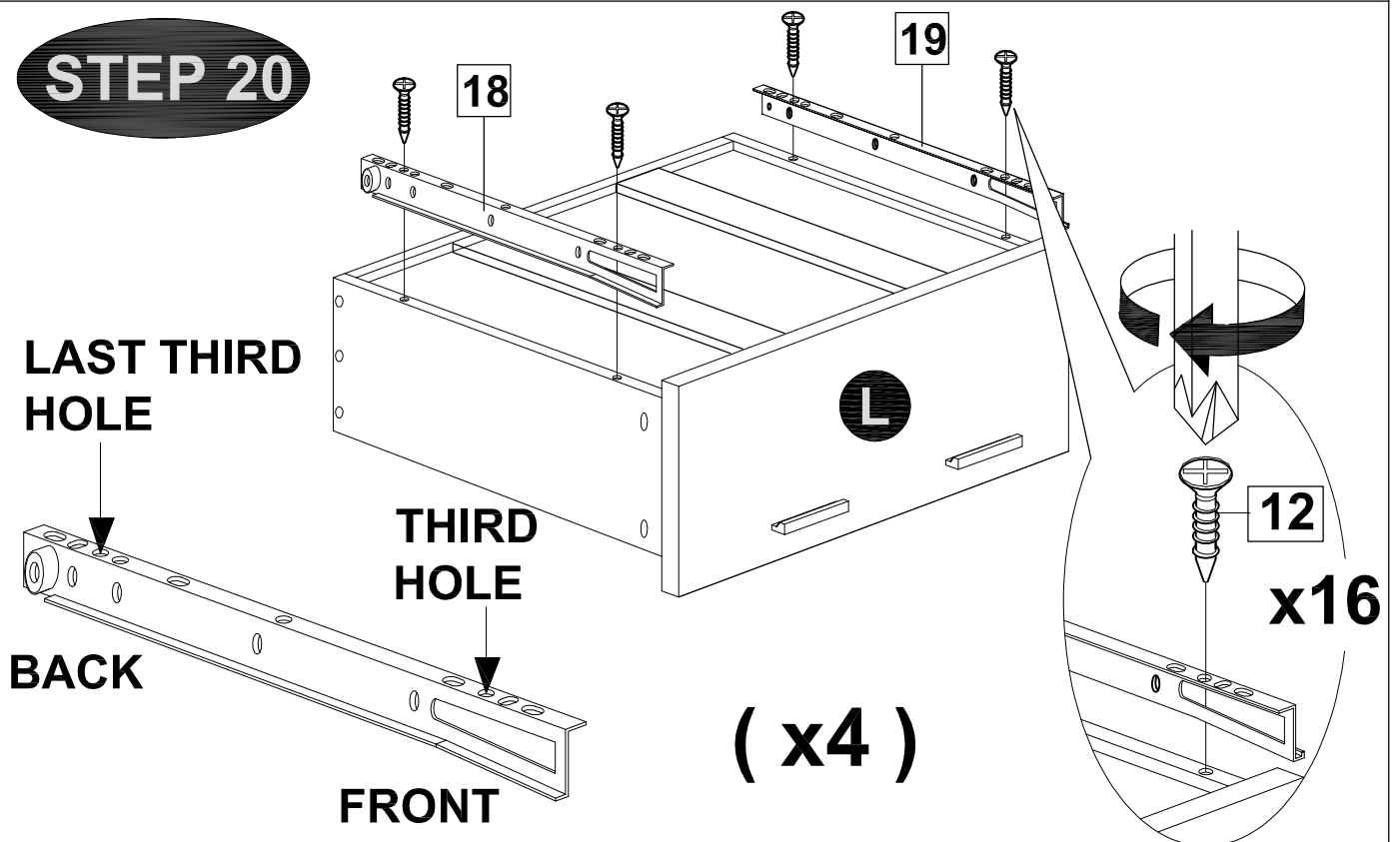
**STEP 19**

( x4 )

x16



**STEP 20**

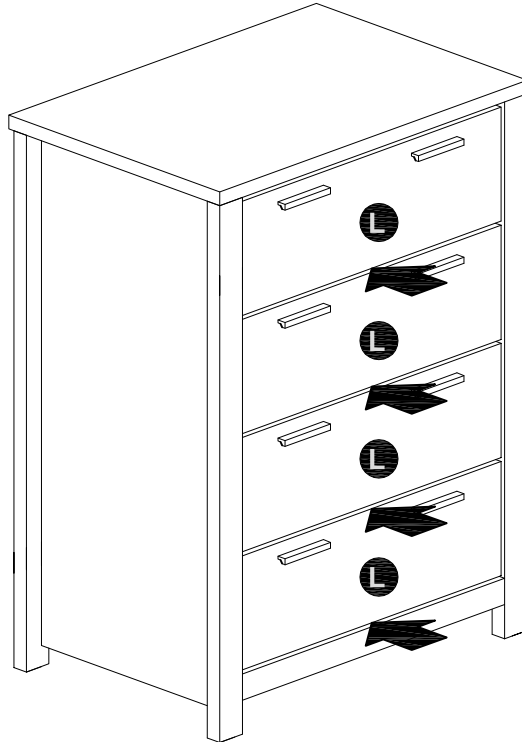


**MODEL NAME:**

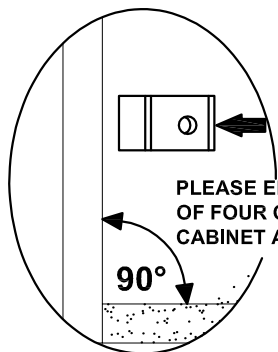
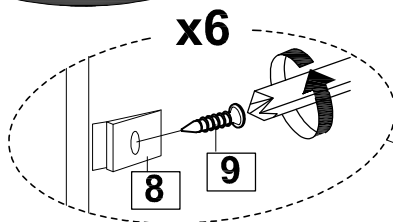
**INDIANA**

**TALLBOY 4 DRAWER**

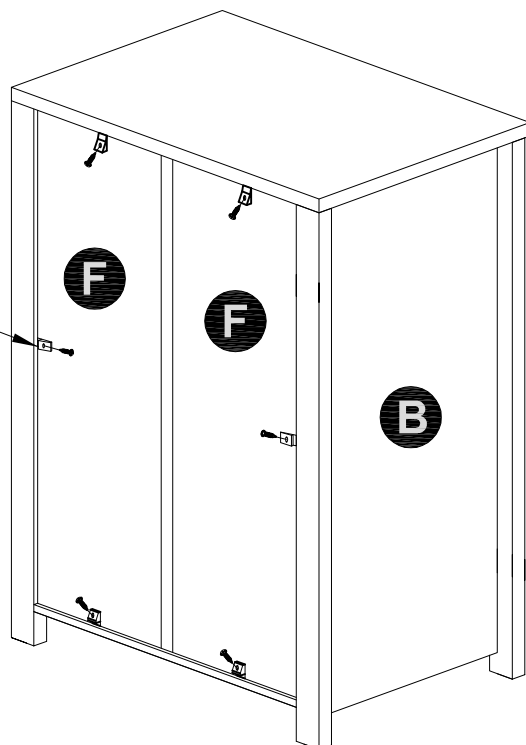
**STEP 21**



**STEP 22**



PLEASE ENSURE THAT EACH  
OF FOUR CORNERS OF  
CABINET ARE SQUARE



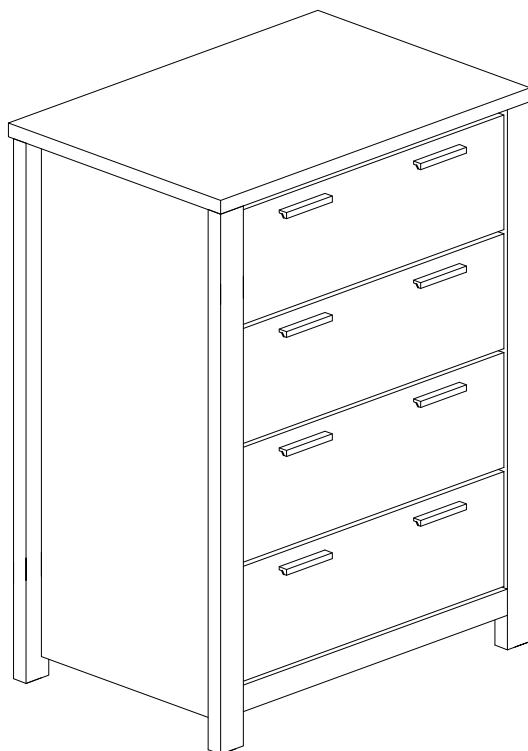


**MODEL NAME:**

**INDIANA**

**TALLBOY 4 DRAWER**

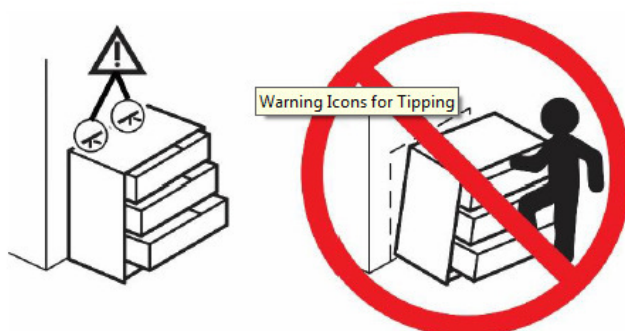
**STEP 23**



## SAFETY WARNING :

It is recommended that you fit the anti-tip bracket to this item to avoid tipping and causing injury.

Assembly instruction and online warning.



Serious or fatal crushing injuries can occur from furniture tip-over. Use of tip-over restraints may only reduce but not eliminate the risk of tip-over. To help prevent tip-over:

- Place heaviest items in the bottom drawers.
- Unless specifically designed to accommodate, do not set TVs or other heavy objects on top of this product.
- Never allow children to climb or hang on drawers, doors or shelves.
- Never open more than one drawer at a time.

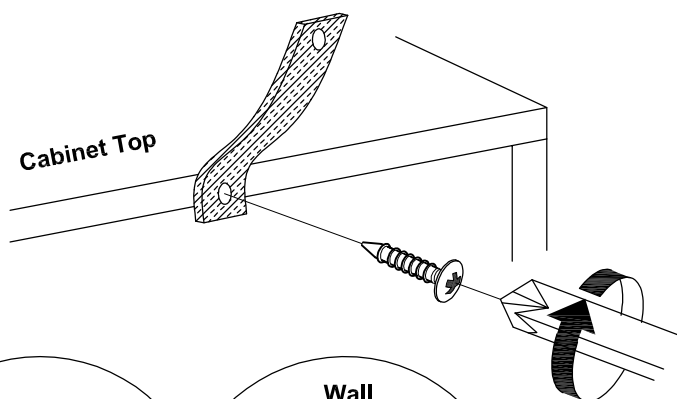
## SAFETY WARNING :

It is recommended that you fit the anti-tip bracket to this item to avoid tipping and causing injury.

## FITTING OF ANTI-TIP BRACKET

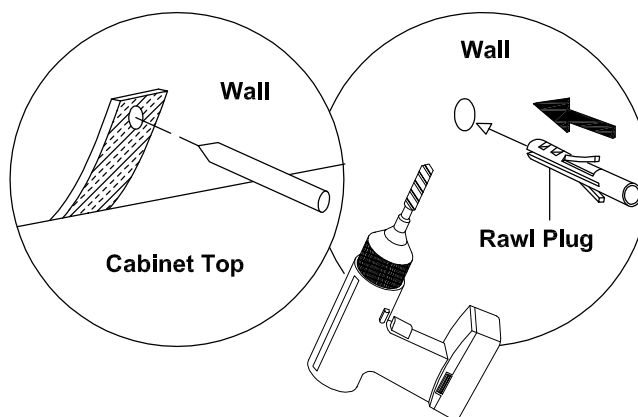
### STEP 1 :

Insert screws through bracket on the cabinet.



### STEP 2 :

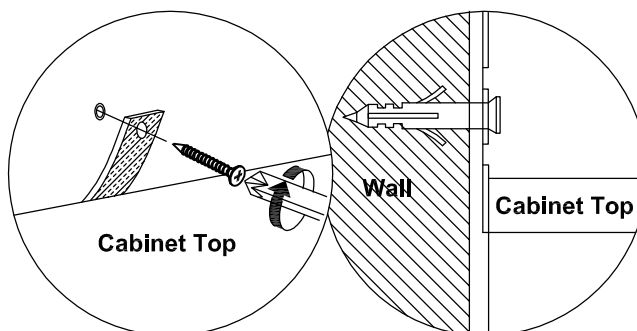
Make a mark on the wall through the bracket.



Drill a hole in the wall and insert the rawl plug.

### STEP 3 :

Insert screw through bracket into hole in wall



**NOTE :** Wall fixings are not supplied with this product as different wall materials require different types of fixing devices (such as Rawl plugs on brick work). You must use fixing devices suitable for the type of wall you intend to mount this product to. Please ensure that the head of any screw used as a diameter greater than the diameter of the mounting hole on the bracket and that the fixing is safe and secure before use.

The screw supplied is to fix the anti-tip strap to the cabinet.

### HARDWARE LIST



Anti-Tip Strap - 2pcs



M4 x 16MM - 2pcs