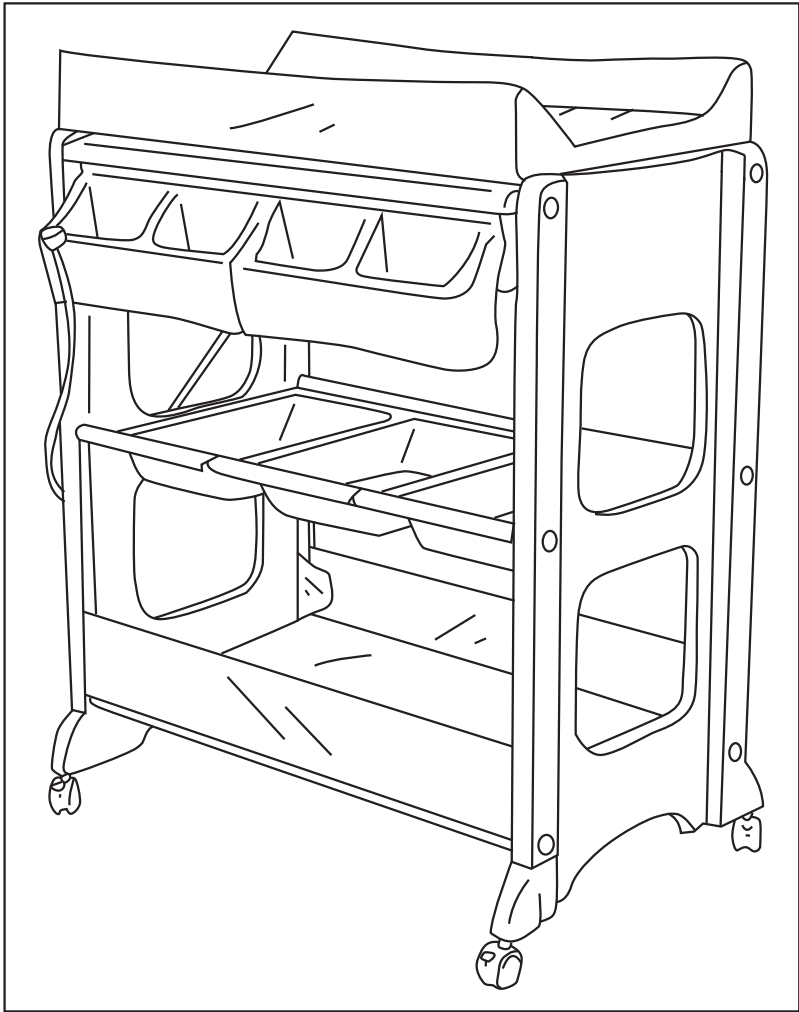




Change Table with Bath
assembly instructions



Supplied by:

The Warehouse Ltd
26 The Warehouse Way,
Northcote, Auckland
0800 422 274
www.thewarehouse.co.nz
Made in China

IMPORTANT
RETAIN FOR FUTURE REFERENCE & READ CAREFULLY

USER GUIDE
Thank you for choosing this product.
Please take a little time to read the important safety notes detailed below,
This will ensure many years of happy, safe use.

- SAFETY:**
- **WARNING:**Do not leave the child unattended.
 - **WARNING:**The drainage hose should be permanently attached to the bath tub drainage outlet or stored out of the reach of children
 - Be aware of the risk of open fires and other sources of strong heat, such as electric bar fires, gas fires, etc. in the vicinity of the changing unit.
 - All assembly fittings shall always be correctly tightened and checked regularly.
 - Always apply changing mat studs to side panels even when using bath.
 - Do not use the changing station when any part is broken, torn or missing.
 - Do not move the changing station when in use.
 - Do not use the changing station for a manner it was not designed for.
 - No other change pad shall be used with the change unit, other than the change pad supplied.
 - Assemble the dresser once, it is not designed to be taken apart and re-assembled.
 - Lockable castor/ wheels should be locked when the changing unit is in use.
 - The weight of the child should not exceed 11kgs.Maximum age 12 months
- CARE AND MAINTENANCE**
- The changing station may be lightly dusted and surface of the shelves should be wiped over using a damp cloth.
 - Never clean with abrasive, ammonia based, bleach or spirit type cleaner.

WARNING

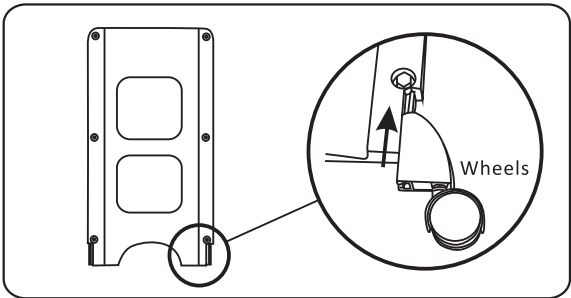
Children have **DROWNED** while using bath aids.
This is **NOT** a safety device. **ALWAYS** keep
baby within arm's reach. **NEVER** leave
baby in care of children.

WARNING

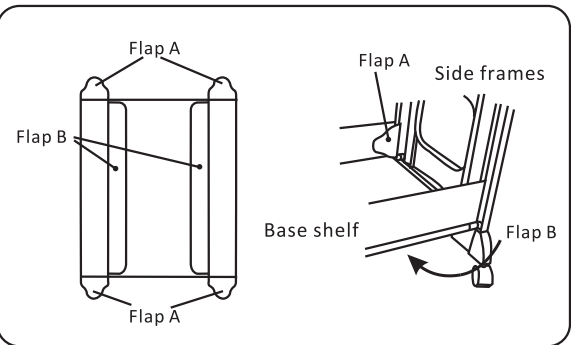
DO NOT LEAVE THE CHILD UNATTENDED

Maximum age 12 months
Maximum weight: 11kg

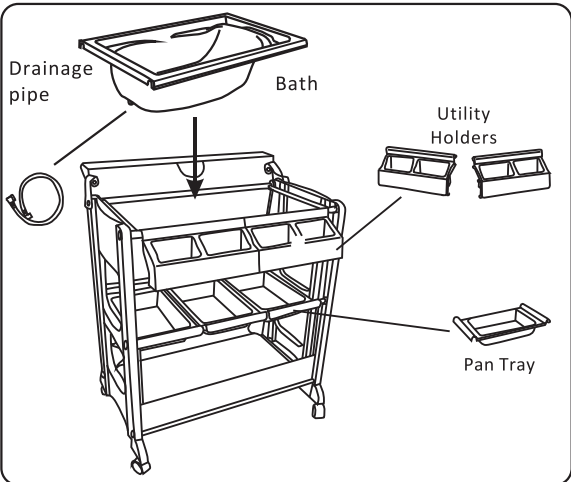
4



5



6



LIST OF PARTS

1. Left side panel 2. Right side panel 3. Side frames 4. Top frame 5. Mattress
6. Base shelf 7. Bath tub 8. Pan trays 9. Utility holders 10. Wheels
11. Bolts-A 12. Bolts-B 13. Drainage pipe 14. Plug 15. Assembly Tool
16. Steel bar 17. Adapting pieces 18. Screw 19. Rubber rings

ASSEMBLING THE CHANGING STATION

Adult assembly required. Do not allow children to play with the screws or parts as they may present a small parts hazard.

If any parts are missing or broken, please contact the manufacturer or distributor to have the parts replaced. Use only Baby Wise replacement parts.

Unpack the changing unit carefully and unwrap each part, taking care not to lose the plastic bag of small items. Check the contents against the list of parts.

- Picture 1. Attach the two sides frames (3) to the left side panel (1) by inserting bolts-A (11) through the holes in the side panel and tightening into the threaded ends of the side frames using the tool supplied (15)
- Picture 2. Place rubber rings (19) around front ends of top frame (4). Front of top frame has 2 x plastic knobs attached underneath.Put the steel bar (16) on the back side of the top frame (4),Attach the top frame (4) to the left side panel (1) by inserting bolts-B (12) through the holes in the side panel and tightening into the threaded ends of the side frames using the tool supplied (15) Attach the right side panel (2) to the frames by inserting the bolts-A and bolts-B.

Picture 3. Place the steel bar (16) on the back of the mattress. Follow the positioning sticker marks, to ensure the change mattress is correctly installed. Secure the steel bar to the mattress with adapting pieces (17) and screws (18). (Phillips head screw driver required, not included)

Picrue 4. Attach the wheels (10) to all four corners of the changing unit, pushing the wheels firmly into place along the slots provided.
NOTE: Ensure the wheels are locked when using the changing unit.

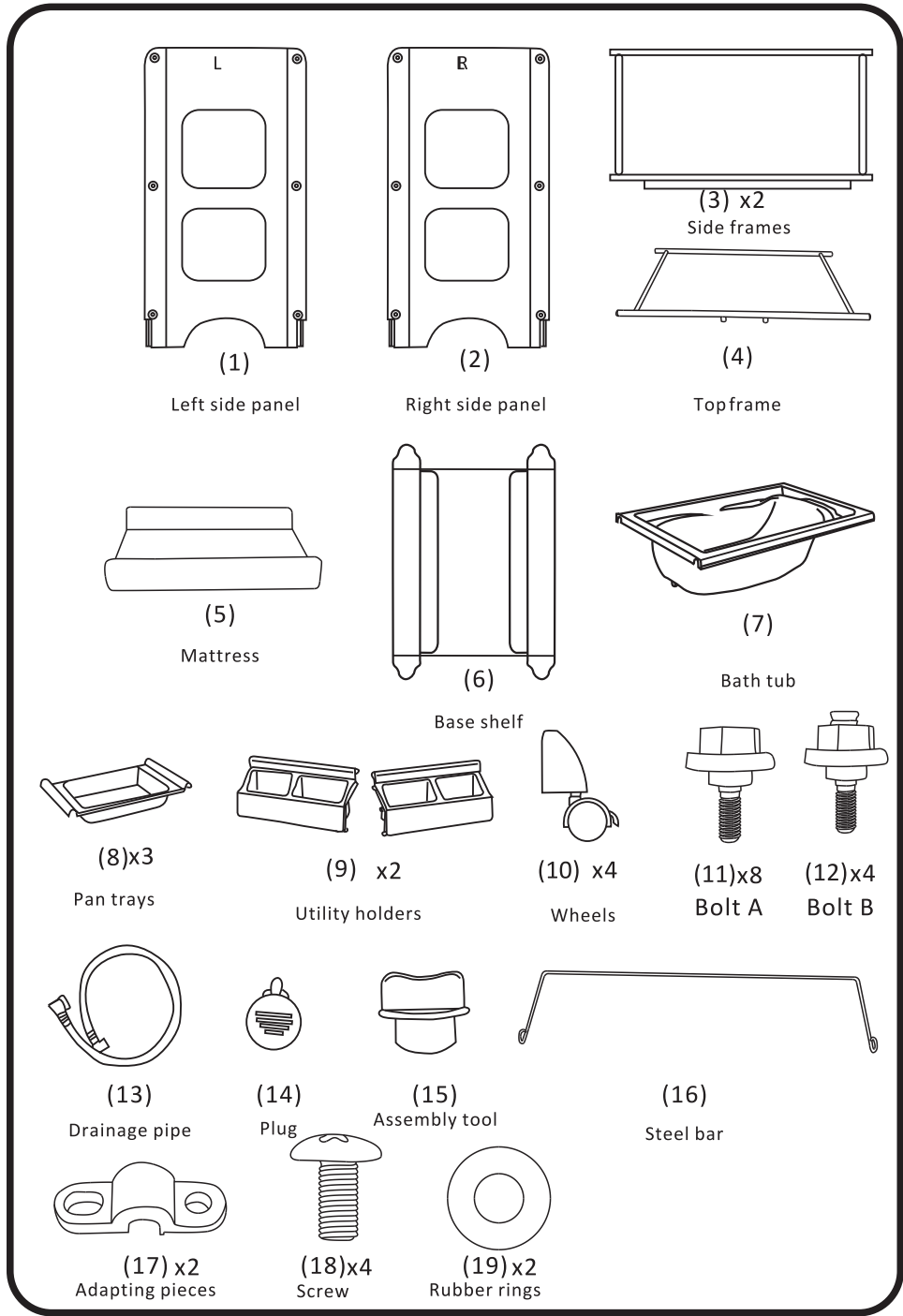
Picture 5. Attach the base shelf (6) by placing the shelf in position then securing with flaps (A) wrapped around the uprights of the two side frames (3) and with flaps (B) hanging straight

Picture 6. Attach the utility holders (9) by hooking them over the front of the top frame. Attach the pan trays (8) by hooking each tray over the tops of the two side frames (3) as shown above. Finally the bath tub (7) can be placed in the top of the changing unit. Attach drainage pipe (13) to the outlet on the underside of the bath.

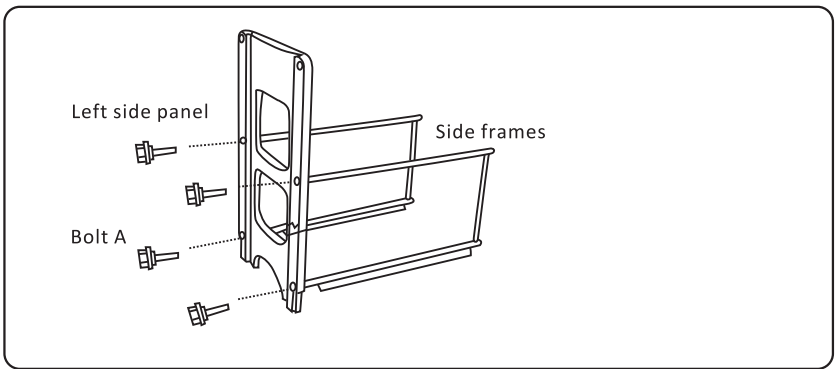
USING THE BATH

The changing unit's bath tub comes complete with a handy drainage hose (13) which can be attached to the outlet on the underside of the bath.
Before placing water in the bath ensure the plug (14) is firmly secured in the plug hole on the inside of the bath.

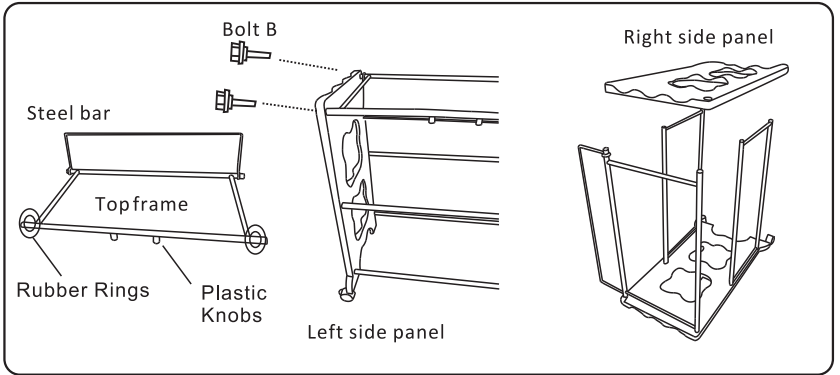
NOTE: when using the bath, care should be taken that water is of a suitable safe temperature before putting the child in. Do not use the bath without the frame.



1



2



3

