

scout

infant capsule
and base

instruction MANUAL



Illustrations and designs may vary.



follow us on
[motherschoice.com.au](https://www.motherschoice.com.au)

the only choice

contents

<i>assembling the capsule</i>	<i>pg.</i>
Warnings	3 - 4
Care and maintenance	5
Components list	6 - 8
Safety notice	9
<i>using the capsule</i>	
Installing with no base	10 - 13
Installing the base	14
Installing with base	15
Removing trim	16 - 17
<i>caring for your capsule</i>	
Notes	18
Product registration	19
<i>contacts</i>	
Customer service	20

Important safety information

General instructions:

1. You are personally responsible for the safety of your baby at all times.
2. Never place your baby on your lap when driving.
3. Do not use second-hand products where the history is unknown.
4. Replace the carrier after an accident.
5. Read this instruction manual carefully and keep it safe for future reference.

WARNING: Do not make any changes to the carrier whatsoever, as this could affect the performance of the car seat and render it unsafe.

Infant carrier maintenance instructions

1. The cover, cushions and belt pads of the infant carrier can be removed in order for these to be cleaned. They can be machine-washed. The plastic edge can be cleaned with water, soap and a soft cloth.
2. If the cover needs to be replaced at any time, only use the cover provided by original manufacturer.
3. The infant carrier must undergo regular maintenance. Do not use lubricants or aggressive cleaning agents.

WARNING: Never place the infant carrier on elevated surface (such as a table or chair).

WARNING: The infant carrier only can be installed in a rear-facing position in the car.

- Never leave your baby unattended.
- Always secure your baby with the harness belt.
- Before every use, make sure the harness is not damaged or twisted.
- Make sure you can fit no more than one finger between the harness and your baby (1cm).
- Only use the head cushion of the infant carrier when the shoulder belts are in the lowest position.

scout

infant capsule and base

warnings

- Always check to make sure the infant carrier can be installed properly in your car before purchasing it.
- Prevent the infant carrier becoming trapped or weighed down by luggage, seats and/or slamming doors.
- Always cover the infant carrier when exposed to direct sunlight in the car. Otherwise the cover, metal and plastic parts could become too hot for your child's skin.
- Keep all plastic packaging materials out of reach of your child to avoid the risk of suffocation.
- The infant carrier only can be installed at the rear of the vehicle.
- Make sure to follow manufacturer's instruction on the infant carrier base installation with the car safety belt.

scout

infant capsule and base

care and maintenance

- Always store in a clean and dry place.
- Clean the frame by wiping with a damp cloth.
- Do not use abrasives, bleach or strong detergents.
- Spot clean fabrics with warm water (no hotter than 30°C) and mild soap.
- Ensure fabric is dry before storing.
- Do not leave in direct sunlight.
- Please secure the fabrics with safety belts when not using.

IMPORTANT:

The trim (fabric cover) is a safety feature. Never use the child seat without it. Don't put your child's safety at risk by using other replacement trim, as this could stop the child seat from protecting your child as well as it should.

WASHING INSTRUCTION:

- The trim is removable and washable at 30°C.
- Line dry only.
- The cradle, safety belts, and plastic component can be spot washed with warm water and mild soap.
- Don't use abrasives, bleacher or strong detergents.



Machine wash, cold



Do not bleach



Dry clean, any solvent
except trichloroethylen



Do not tumble dry

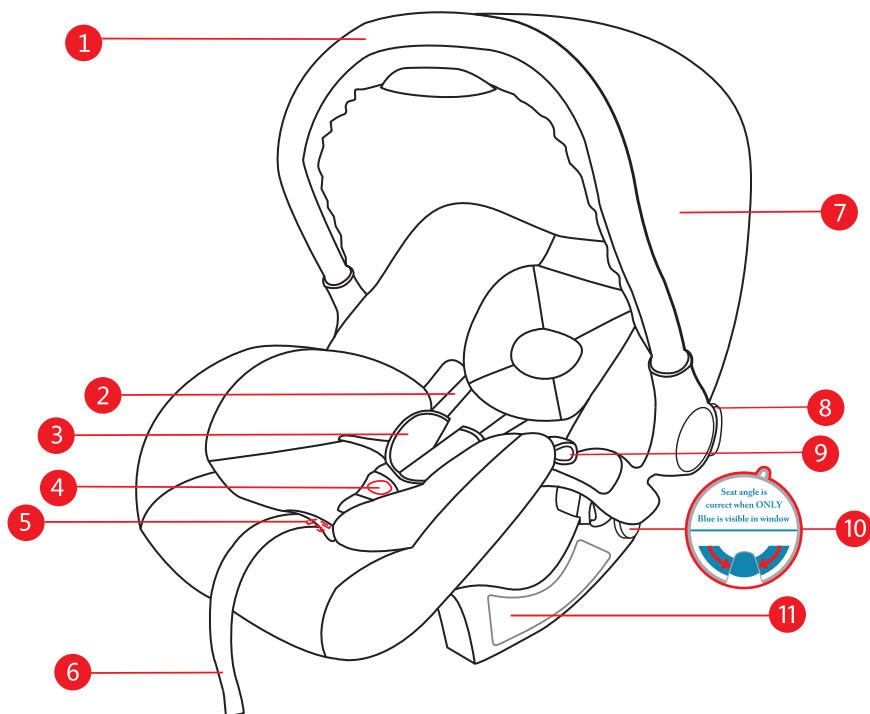


Do not iron

scout

infant capsule and base

components list



1. Handle

2. Harness strap

3. Harness pads

4. Buckle

5. Harness release lever

6. Harness tightening strap

7. Canopy

8. Handle adjustment buttons

9. Belt path hook

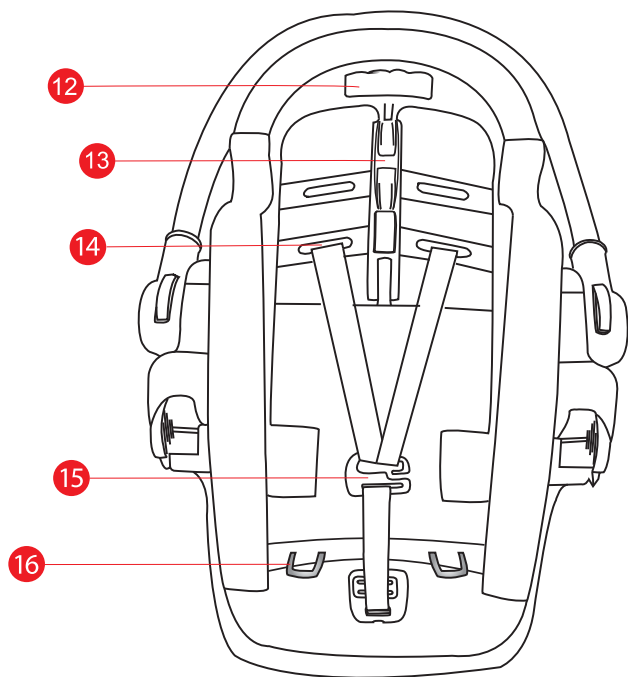
10. Angle guide

11. Installation label

scout

infant capsule and base

components list



12. Release handle

13. Central belt path hook

14. Harness adjuster slot

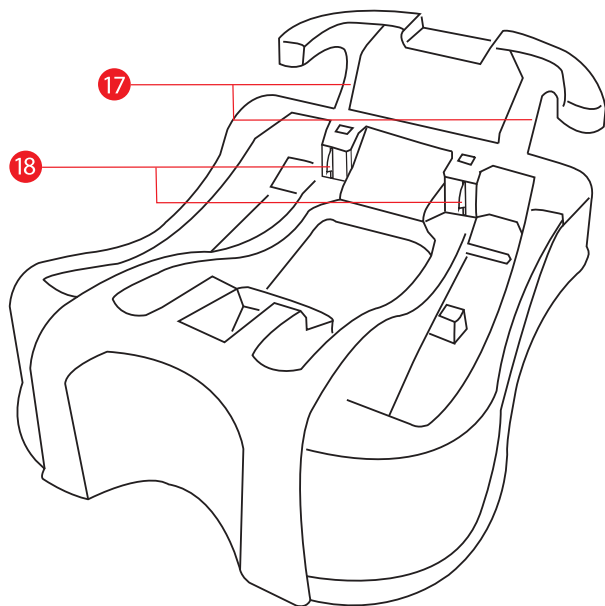
15. Harness strap connector

16. Iron hooks

scout

infant capsule and base

components list



17. Belt path

18. Hook attachment points

scout

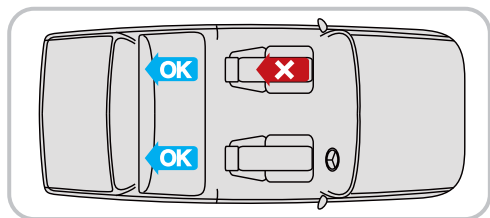
infant capsule and base

safety notice

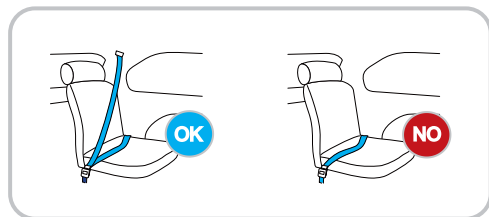
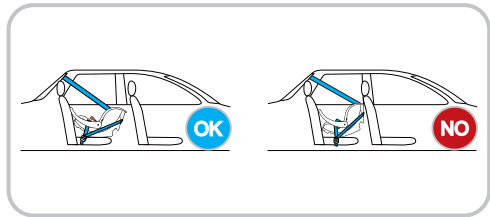
Safety notice:

Install this restraint in a vehicle with shoulder/lap belt, and ensure it is installed on the passenger seat NOT equipped with an airbag.

Always keep the restraint rearward-facing (in opposition to the driving direction) on the rear passenger seat.



Warning: The infant carrier can only be installed at the rear of the vehicle.



This capsule is applicable for group 0+ weighing 0-13 kgs, aging from newborn to 12 months.

WARNING:

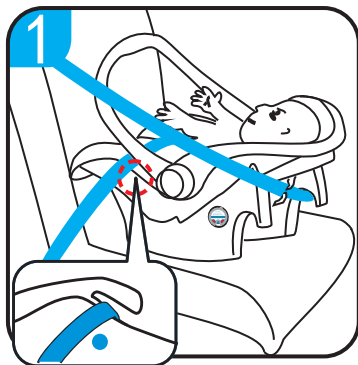
To be used only in a rearward-facing position until approximately 12 months or 13 kg.

scout

infant capsule and base

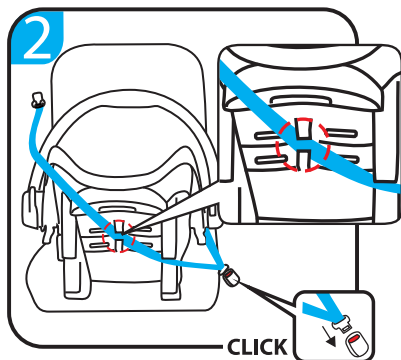
installing with no base

Warning: Must not install infant capsule in the seat with an airbag. Make sure the infant capsule is close against vehicle seat.

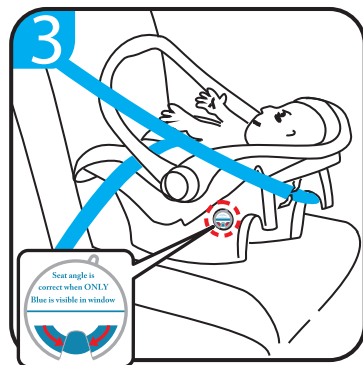


1. Using the car safety belt.
2. Feed the lap belt of vehicle through the belt path hooks in front of child safety seat (**Figure 1**).

NOTE: The vehicle lap belts must thread through the belt hooks on **BOTH** sides of child infant capsule.



3. Wrap the vehicle sash belt around the back of the infant capsule and thread through the central hook. (**Figure 2**).
4. Click buckle into place.



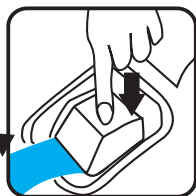
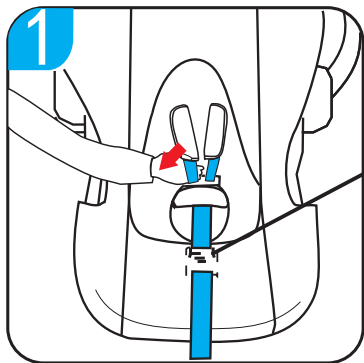
5. Adjust the child safety seat until the angle indicator is blue, and first keep lap belt of vehicle seat tight and then make sure the diagonal belts of vehicle seat restrain the infant capsule firmly (**Figure 3**).



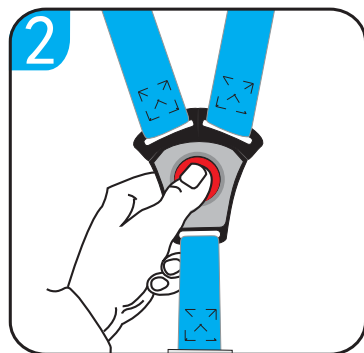
scout

infant capsule and base

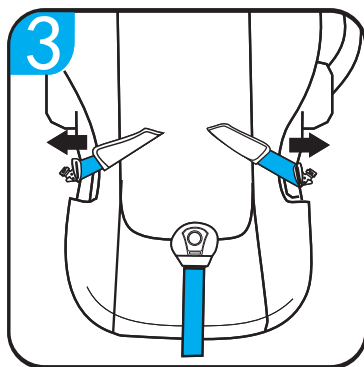
installing with no base



1. To lengthen the shoulder harness straps, press the harness release lever and pull the shoulder straps at the same time.



2. Press the red button in the buckle to release the harness shoulder straps.

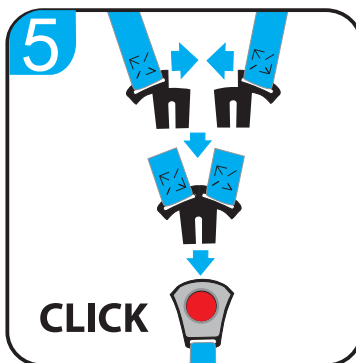


3. Lay the harness shoulder straps on the seat as shown.

scout

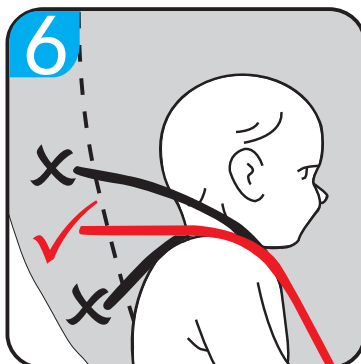
infant capsule and base

installing with no base

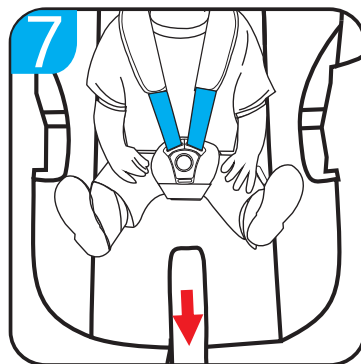


4. Place the shoulder harness straps on child's shoulders as shown.

5. Lock the buckle (**Figure 5**).



6. Check harness height. The shoulder straps must be in the slots which are nearest to the child's shoulders, but not lower than the child's shoulders.

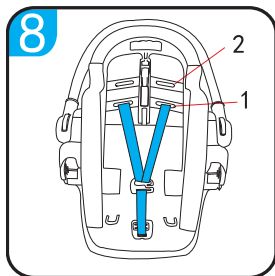


7. Pull the central adjuster belt to tighten the shoulder strap length (**Figure 7**). To loosen, press the harness release lever and pull the shoulder belts at the same time (**Figure 1**, page 11).

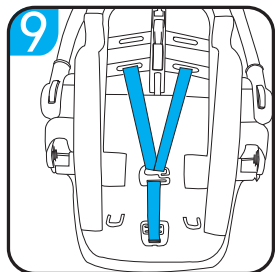
scout

infant capsule and base

installing with no base



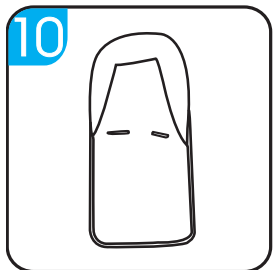
8. Please note, there are two shoulder heights to suit different heights of children.



9. To adjust height of shoulder harness straps, take the belt out of the connector and adjust to your desired position. Then reconnect the belt with connector.



NOTE: The belts must not be twisted.



10. Infant insert is only applicable for the child weighing **0-6 kgs**. If your child is above this weight, please remove the infant insert.

scout

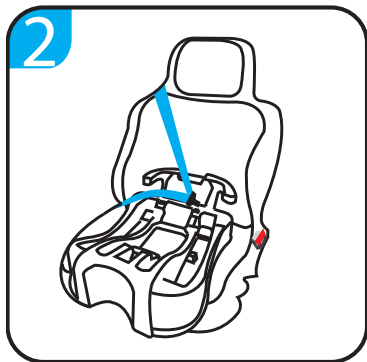
infant capsule and base

installing the base

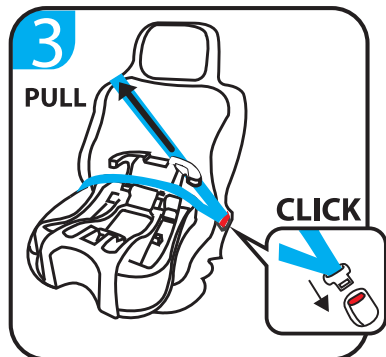


step 1: install the base

1. Pull out car vehicle safety belt (**Figure 1**).



2. Feed the lap belt of vehicle through the gap in front of the base (**Figure 2**).



3. Click buckle into place (**Figure 3**). Make sure you hear a “click” when locking the buckle.
4. Pull belt to remove slack for a tight fit.

scout

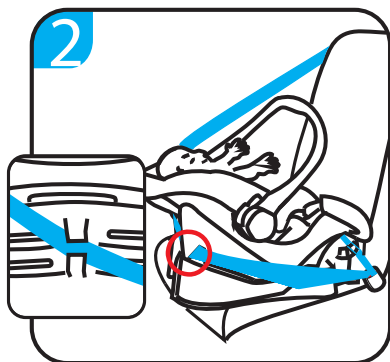
infant capsule and base

installing/removing the capsule

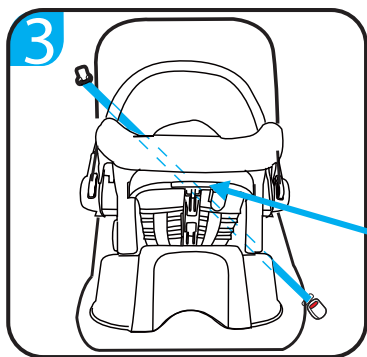


step 1: install the child safety capsule

1. Put the child safety seat onto the base, ensuring the iron hooks are over the top of the hook attachment points. Push down and you will hear a “click”.



2. Wrap the car vehicle sash belt around the back of the infant capsule and thread through the central belt path hook (**Figure 2**).



step 2: removing the child safety capsule

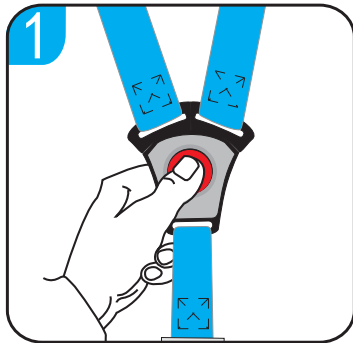
3. Pull the vehicle sash belt off the child safety seat, then pull the release handle to release the child safety seat from the base.



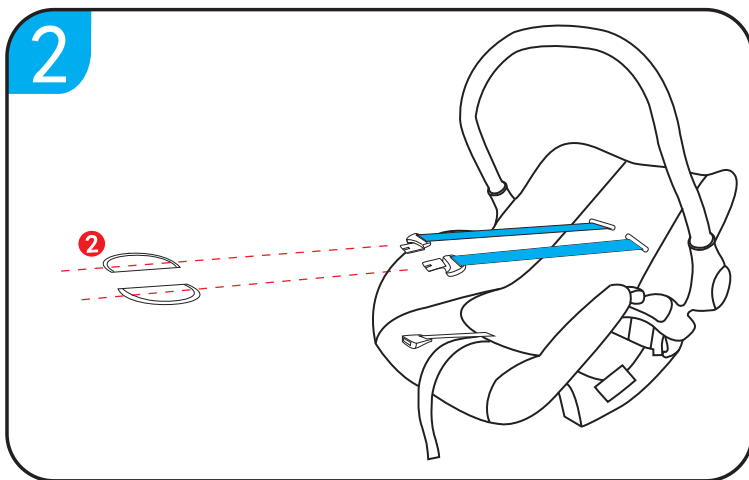
scout

infant capsule and base

removing trim



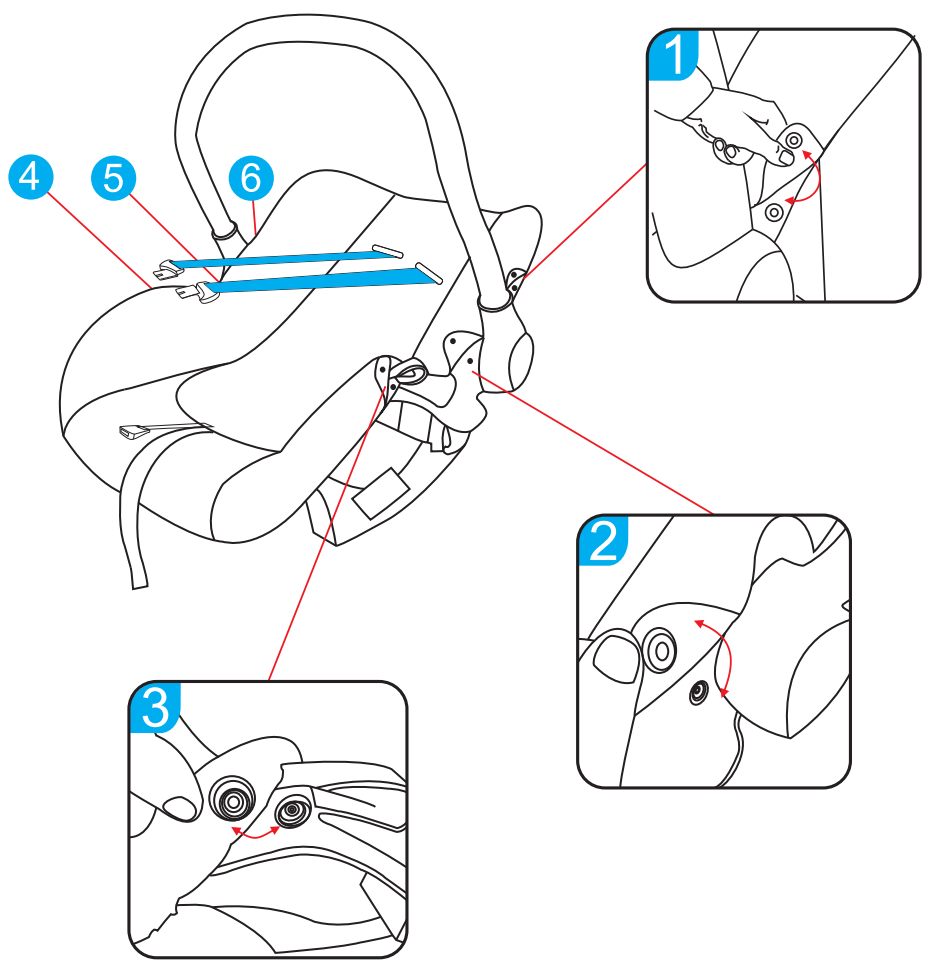
1. Press the red button in infant capsule.



2. Remove the shoulder belt protector from shoulder harness straps.

scout
infant capsule and base
removing trim

Seat disassembling: Remove trim from the seat by separating 6 press studs.



notes:

mother's choice tip...

Visit us online to register your new Mother's Choice product.



follow us on  
motherschoice.com.au

www.motherschoice.com.au/product-registration

benefits of registration

- Your safety - allows us to contact you with important product notifications.
- Confirmation of ownership - provides a record in case of product loss or theft.
- Improved product development - helps us continue to design products that meet your needs.

*to prevent loss or fading,
please attach your receipt here:*

motherschoice.com.au

DOREL AUSTRALIA PTY LTD
655-685 Somerville Road
Sunshine West Victoria 3020
Email: customerservice@dorel.com.au
Phone: 1300 809 526
Hours: 8:30 am - 5:00 pm Monday to Friday

IGC DOREL NEW ZEALAND LTD
14 Sir William Avenue
East Tamaki Auckland 2013
Email: customerservice@igc.co.nz
Phone: 0800 628 000 (toll free)
Hours: 8:00 am - 5:00 pm Monday to Friday

017418 - Mother's Choice Scout Infant Capsule and Base - 11 - 16



Specifications are subject to change without notice.
Copy or reproduction without permission is prohibited.
© 2016 Dorel Australia Pty Ltd. All Rights Reserved.

www.dorel.com.au