



Warranty

We pride ourselves on producing a range of quality home appliances that are both packed with features and completely reliable. We are so confident in our products, we back them up with a 3 year warranty.

Now you too can relax knowing that you are covered.

Customer Helpline NZ: 0800 422 274

This Product is covered by a 3 year warranty when accompanied by proof of purchase.

IM version 1.1 October 2025



Cordless Hard Floor Cleaner



INSTRUCTION MANUAL MODEL X6

INSTRUCTION MANUAL

TABLE OF CONTENTS

Important safety instructions	4
Product overview	10
Operating instructions.....	12
Cleaning and maintenance	17
Troubleshooting	21

Important safety instructions

- This product is suitable for use on hard floors in the home environment, including waxed floors, stone floors, rubber floors, marble surfaces, granite floors, terrazzo floors, solid wood floors, laminate floors, bamboo floors and various mirror tiles, porcelain tiles and other flat floor surfaces. The product may not work optimally when used on uneven surfaces.
- PLEASE read this manual fully before operating the machine and keep handy for future reference.
- Do not use this product near or on flammable or explosive objects, there will be a risk of fire and explosion. Do not use this product near a working fireplace or heater to prevent deformation of its casing.
- Do not vacuum hot substances (unextinguished cigarette butts, matches or hot ashes), ultra-fine substances (e.g. lime, cement, wood chips, plaster dust, ashes or charcoal dust), hazardous substances (e.g. solvents or descaling agents), chemical substances (e.g. acids or cleaning agents etc.) and other substances with uncertain physical properties.
- Do not use this product to clean detergent, paraffin, petrol, alcohol, gasoline, printing toner, paint or perfume, since such liquids may cause short circuit, fire or explosion in the device.

- Do not use this product to absorb sharp or large objects, such as glass shards, small toys, pins, paper clips, stones, plaster and large pieces of paper, or else it may block up and damage the machine.
- Do not touch the plug or any live part of the product with wet hands to avoid electric shock. Stop using the product if the plug is damaged.
- Keep airflow paths and moving parts of this product away from long hair, loose clothing, fingers and other parts of your body.
- When handling the appliance, to avoid injury take care that your fingers or other parts of your body do not touch the spinning rotary brush.
- Only use approved hard floor cleaning solutions. Adding other cleaners that are not for hard floor cleaning may damage the appliance. Always follow the instructions on the Cleaning Solution Bottle. Only mix the ratio of cleaning solution to water as instructed on the cleaning solution bottle.
- For the purposes of recharging the battery, only use the detachable charger provided with this appliance. The Appliance must only be supplied at Safety Extra Low Voltage “SELV”.
- Only charge the battery between an ambient room temperature of 10°C – 40°C.
- ONLY for domestic use. Industrial or commercial use invalidates the warranty.

After using the machine, please store it in a dry place since humidity may affect its insulation and service life. The product body cannot be soaked or rinsed with water.

- Please check the opening of the nozzle regularly. If it is blocked, please clear it in time to avoid blockage which may reduce the suction force and affect the performance of the product.

- Please make sure that the product is powered off before removal or fitment of its rotating brush.
- In case of any of the following conditions, please do not use the product and contact customer services.

1. The product has fallen off and is visibly damaged or not functioning properly;
2. If the supply cord is damaged, it must be replaced by the manufacturer, its service agent or similarly qualified persons in order to avoid a hazard.

- Do not disassemble the product yourself, there are no customer serviceable parts in this machine and do not attempt to alter the machine as this will result in danger.





- Use of voltages that do not comply with the specifications of the product will damage the product and may cause injury to the user. The correct voltage rating is shown on the nameplate

- Due care must be taken when cleaning stairs with this product to prevent falls.
- Do not shake the machine up and down or bump it violently to prevent dirty water from spilling into the motor and down the sides of the product.
- When the motor is working, do not lift or carry the product up or down, and do not place it on any of its sides or on any flat surfaces to prevent back flow water from entering the motor.
- To prevent tripping and falling of any person, the product should be placed against a wall after using it.
- Do not use the product if the clean water tank and the waste water tank are not installed properly.
- Do not place any small objects at the air outlet and do not block the outlet. Remove any small objects that may obstruct the air flow to prevent the machine from overheating.
- Do not get the machine wet, otherwise there will be a risk of fire due to short circuit of the machine.
- All technical data and other information provided herein are obtained by us or by the appointed third-party testing company and are subject to final interpretation by us.
- After use, place the product in the base stand, which will prevent any water spills or stains to the supporting floor.

- This appliance is intended to be used in household and similar applications such as:
 - staff kitchen areas in shops, offices and other working environments;
 - farm houses;
 - by clients in hotels, motels and other residential type environments;
 - bed and breakfast type environments.
- This appliance can be used by children aged from 8 years and above and persons with reduced physical, sensory or mental capabilities or lack of experience and knowledge if they have been given supervision or instruction concerning use of the appliance in a safe way and understand the hazards involved. Children shall not play with the appliance. Cleaning and user maintenance shall not be made by children without supervision.

- The charger must be removed from the socket-outlet before cleaning or maintaining the appliance.
- Warning: Rotating parts have a risk of jamming.

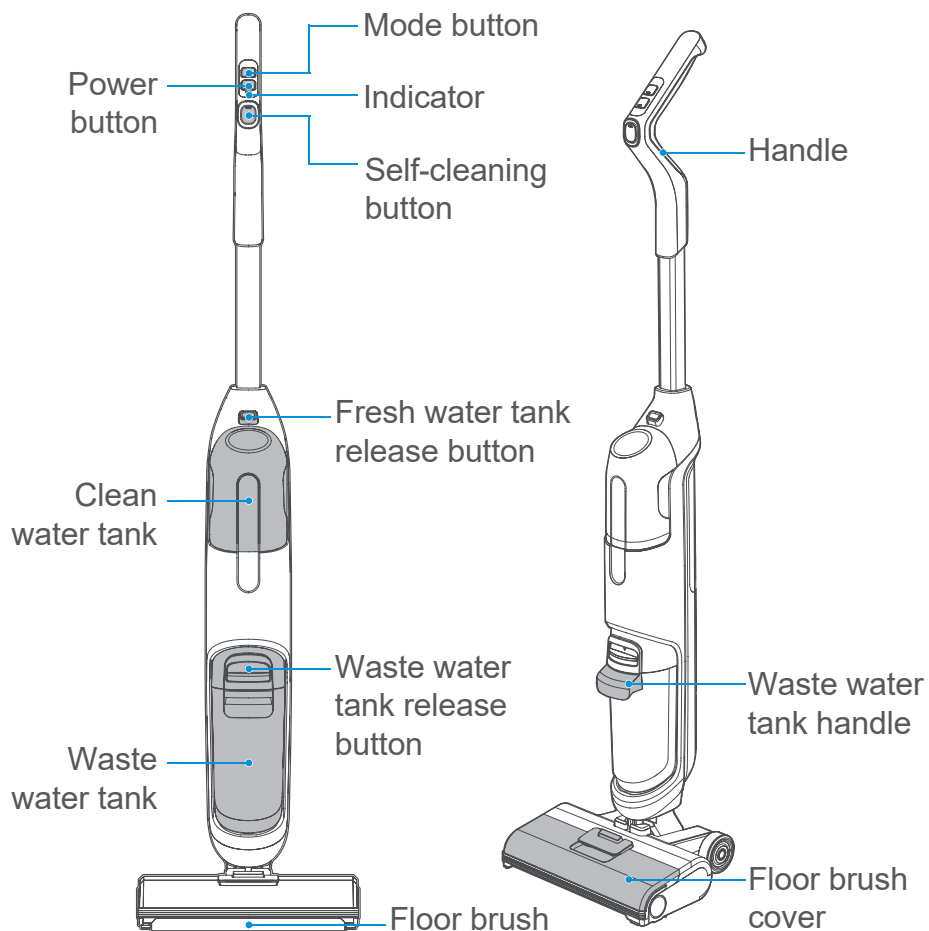
- **WARNING:** For the purposes of recharging the battery, only use the detachable supply unit (charger) provided with this appliance : Model MC2805A-S.
- If the product will not be used for an extended period of time, please regularly charge the battery (at least every 3 months) to avoid permanent battery damage.
- This appliance contains batteries that are non-replaceable. As the Battery Pack is not removable, the whole unit will need to be handed in for the battery to be recycled. Contact your local waste management authority for more information on Battery Recycling and disposal regulations in your area.

	Symbol IEC 60417-5005(2002-10)	Plus; positive polarity
	Symbol IEC 60417-5005(2002-10)	Minus; negative polarity
 Ref type of adapter	[symbol IEC 60417-6181 (2013-03)]	detachable supply unit
	[symbol Is0 7000-0790 (2004-01)]	read operator's manual

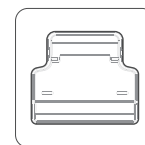
Product overview

Make sure all parts are included in the device packaging. If you have a problem with your device or parts, contact customer services.

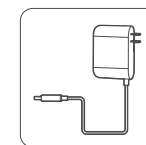
• Front view



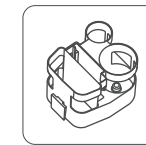
• List of Accessories



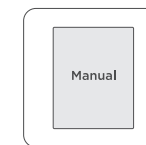
Base x 1



Charger x 1



Storage rack x 1



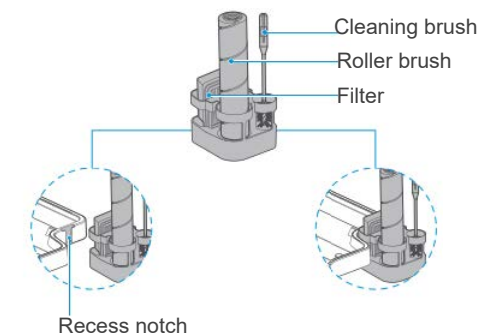
Manual x 1



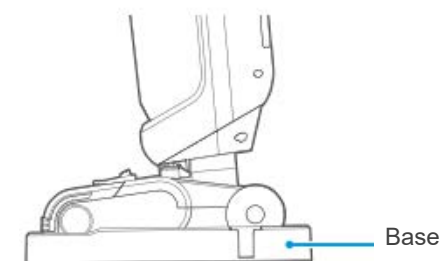
Brush x 1

Cleaning brush: The cleaning brush can be used to clean the stubborn dirt attached to the waste water tank and the pipes below.

Accessory storage rack: Insert the accessory rack protrusion against the base recess. Can be used to store roller brush, cleaning brush and filter.



Base: Used to store the floor cleaner and to be used in conjunction with the self-cleaning function of the cleaner.

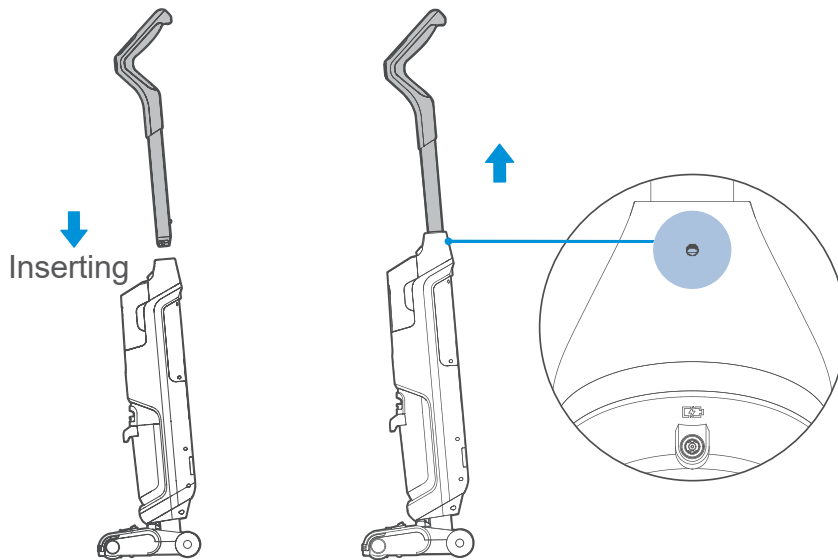


Operating instructions

• Preparation before use

Handle assembly and disassembly :

Assembly: Insert the end of the handle into the socket of the machine vertically until a “click” can be heard at the bottom.

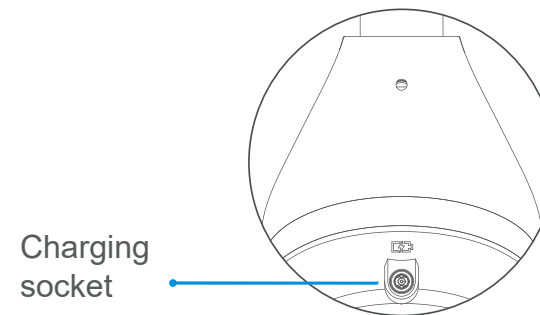


Disassembly: To disassemble the handle for storage, use a tool like a screwdriver to insert into the round hole at the back of the machine to the bottom while pulling the handle out vertically.

• Machine charging

Note: Charge the product before using it for the first time.

1. Place the machine on the base.
2. Insert the charging end of the adapter into the charging port of the machine (as shown below), and connect the plug to a 220-240V~ socket. The indicator will activate solid blue during the charging process.
3. It will take about 4-6 hours to fully charge the machine. After it is fully charged, the indicator will switch off.



• Filling the clean water tank

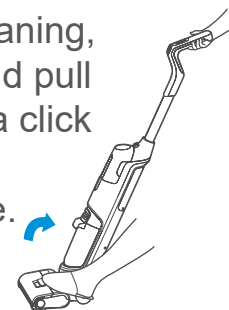
Note: Only the clean water tank shall be filled with water, not the waste water tank.

1. Hold the machine with one hand and press the clean water tank release button with the other hand to remove the clean water tank.
2. Open the sealing cover of the clean water tank, fill the tank with tap water and close the sealing cover.
3. Install the clean water tank with the sealing cover inwards on to the machine until a click could be heard.

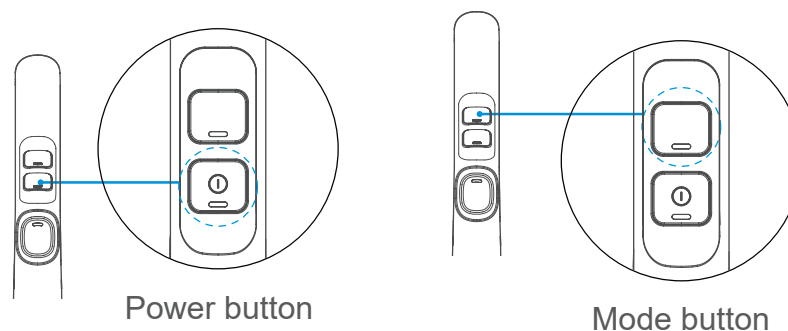


• Power on and cleaning

1. To power on the machine for cleaning, hold the floor head with one foot and pull the handle in an inclined way until a click can be heard. At this moment, the machine will be in the working state.

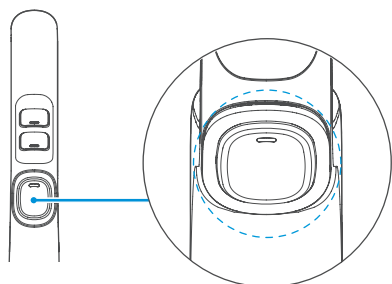


2. Now press the power switch button to turn on the machine (press the button again to power the machine off). Note: There will be a 3 second delay from when the machine powers down from when it is switched off.
3. Press the mode button to switch to activate high-speed mode, press the button again to switch to rapid suction mode (without water spray out), and press the button for the third time to switch to low-speed mode. There are three modes in total.



• Self-cleaning

After completing the cleaning process, press the self-cleaning button to start the self-cleaning process, which may be completed in 0.5 minute.



Self-Clean

This mode helps to clean the rotating brush and flush the suction inlet.

CAUTION : Ensure the unit is placed in the supporting base stand before activating this mode.

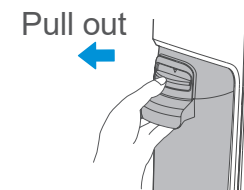
Cleaning and maintenance

• Cleaning waste water tank

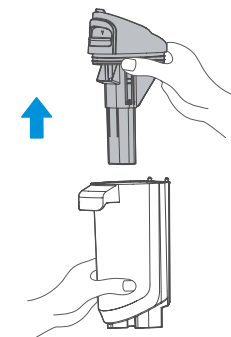
Note: After cleaning, the machine shall be placed on its base, but avoid direct sunlight or moisture exposure.

To ensure the performance of the machine, please maintain its parts regularly. Before cleaning the machine, please power it off first. When using water or neutral detergent to clean the machine, make sure that the cleaning cloth is dried to prevent water from entering to the electric components of the machine.

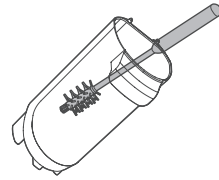
1. Remove the waste water tank by pushing the tank button down with the thumb downward and pulling it outwards at the same time.



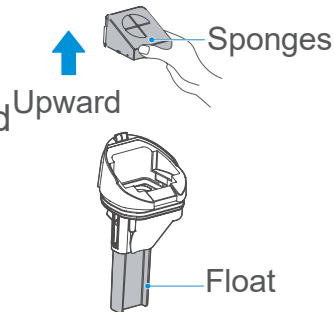
2. Hold the tank with one hand and pull up the upper cover of the waste water tank with the other hand.



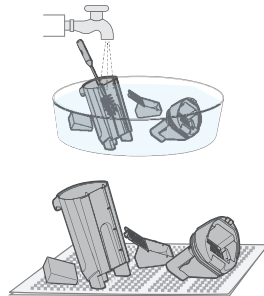
3. Empty the tank and use the cleaning brush to remove any deposited stains (if any) on the inner wall of the tank.



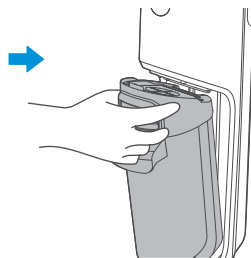
4. Remove the HEPA filter from the waste water tank and check if the float is caught by any foreign matter.



5. After removing the HEPA filter, rinse the tank with clean water and fully dry it before reassembling it back in the same way.



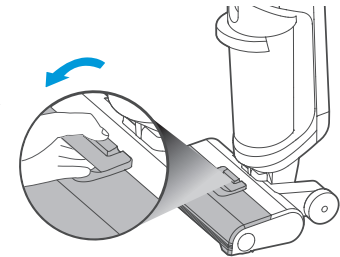
6. A click will indicate the successful installation of the waste water tank.



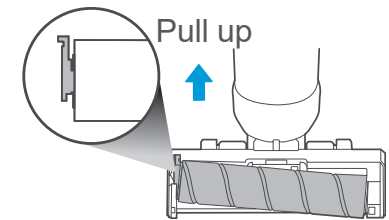
• Cleaning floor brush cover and rolling brush

Note: It is recommended to clean and dry the rolling brush cover and rolling brush regularly after each use to ensure the cleanliness of the machine. Any stains at the nozzle shall be cleaned with a wet rag. Do not flush it with water.

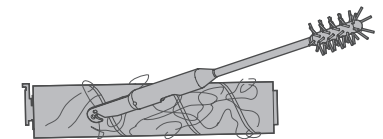
1. Take the floor brush cover off by pressing the release lever as shown in the figure.



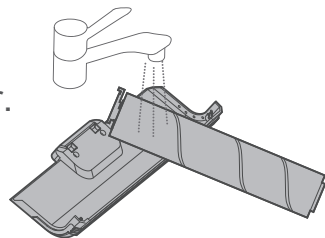
2. Pull the lever at the left end of the rolling brush to remove the rolling brush.



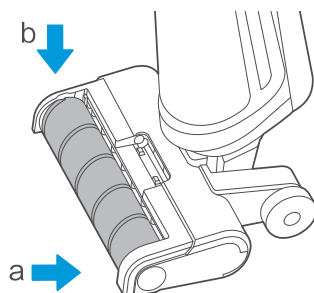
3. Clean anything on the rolling brush.



4. Use clean water to wash the rolling brush and its cover.

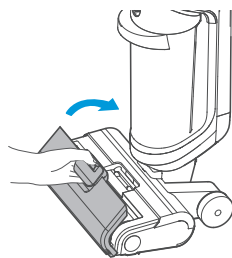
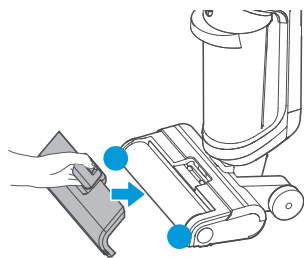


5. After the cleaning is completed, pinch the brush lever with one hand, align the other side of the brush with the right end cover, then put the lever end into the slot. The brush is successfully installed.



If the machine is not used immediately, the brush can be placed in a ventilated place to dry before installation (or placed in the storage rack to air).

6. After cleaning, align the snap joint on both ends of the brush cover with the slots on both ends of the brush, rotate and press the brush cover lever until a click can be heard.



Troubleshooting

If you have a problem with your appliance, first review the following table and try the suggestions provided.

Problem	Cause	Solution
The product does not work.	<ul style="list-style-type: none"> - Rolling brush is jammed by hair or other objects - The waste water tank is full - Insufficient water in the clean water tank - Low battery 	<ul style="list-style-type: none"> - Clean the rolling brush - Clean the waste water tank - Refill the clean water tank - Charge the machine
Low suction force	<ul style="list-style-type: none"> - Rolling brush, brush cover and waste water tank are not installed properly - Brush is jammed by hair or other objects - Nozzle or pipe is blocked - The filter screen above the float is dirty - The filter of the waste water tank is dirty or missed 	<ul style="list-style-type: none"> - Install again - Clean the rolling brush - Clean the obstacles in the nozzle or the pipe - Clean the filter screen - Clean or install the filter
Noise from fan operation	<ul style="list-style-type: none"> - The nozzle is blocked - The water in waste water tank has reached Maximum level 	<ul style="list-style-type: none"> - Remove any obstacles in the nozzle - Clean the waste water tank
No water from the floor brush	<ul style="list-style-type: none"> - Insufficient water in the clean water tank - The clean water tank is not installed properly 	<ul style="list-style-type: none"> - Refill the clean water tank - Reinstall the clean water tank

Problem	Cause	Solution
Water leakage at the air outlet	The float of the waste water tank is caught by any foreign matter The filter of the waste water tank is not dried after cleaning and using	Remove any foreign matters at the float Dry the filter after cleaning and using the machine
Water leakage at the bottom of the floor brush	The waste water tank or its filter is not installed	Install the waste water tank or its filter

If the problem persists, please contact the service centre