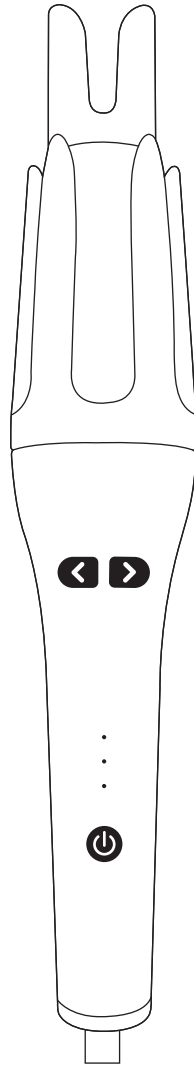


living & co.

CURLING WAND / STYLER



INSTRUCTION MANUAL

Model no.:NV690-32

AFTER SALES SUPPORT

☎ (NZ) 0800 422 274

CONTENTS	Page
IMPORTANT SAFEGUARDS	2
PRODUCT OVERVIEW	3
HOW TO USE YOUR CURLING WAND / STYLER	4-5
CARE AND MAINTENANCE	6
RESPONSIBLE DISPOSAL	6

IMPORTANT SAFEGUARDS

READ ALL INSTRUCTIONS BEFORE USING KEEP AWAY FROM WATER

WARNING: The polyethylene bags over the product or its packaging may be dangerous.

Keep these bags out of the reach of babies and children. Never use them in cribs, children's beds, pushchairs or playpens.

The thin film may cling to the nose and mouth and prevent breathing.



A bag is not a toy.

WARNING: Do not use this appliance near bathtubs, showers, basins or other vessels containing water.

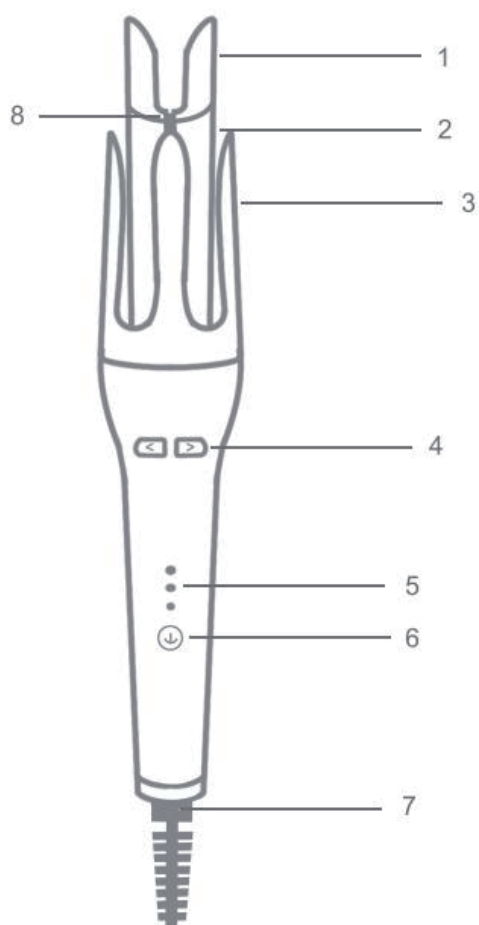


Use this appliance to straighten human hair only. Do not use this appliance on artificial hair or animals.

IMPORTANT! The appliance may have different results depending on the hair type. Therefore, we recommend to do a trial at a hidden spot before first use.

- **WARNING-** When the styler is used in a bathroom, unplug it after use since the proximity of water presents a hazard even when the device is switched off.
- If the supply cord is damaged, it must be replaced by the manufacturer of its service agent or a similarly qualified person in order to avoid a hazard.
- For additional protection, the installation of a residual current device with a rated residual operating current not exceeding 30mA is advisable in the electrical circuit supplying the bathroom. Ask your installer for advice.
- Not to be used in a bath or shower.
- Do not use the unit if it has been dropped or if it appears to be damaged.
- Do not leave the unit unattended when it is plugged in or switched on.
- Unplug the unit immediately if you have problems when using it.
- Do not use any accessories other than those recommended by manufacturer.
- Unplug the unit after each use and before cleaning it.
- Avoid any contact between the unit's hot surfaces and your skin, in particular, your ears, eyes, face and neck.
- This appliance is not intended for use by people (including children) with reduced physical, sensory or mental capabilities, or by persons who lack experience or knowledge, unless they are supervised or have been given instructions before hand on the use of the unit by a person responsible for their safety.
- Children should be supervised to ensure they do not play with this appliance.
- Allow the unit to cool before storing.
- Do not use or leave the supply cable in a position where it can become wet or there is a danger of it falling into a basin or other vessels containing water.
- Please do not attempt to dismantle the appliance. This appliance has no user serviceable parts inside.
- Do not place the appliance on any heat sensitive surfaces.
- This product is intended for household use only, not designed for commercial industrial purposes. Do not use it outdoors.
- Never pull, twist, or excessively bend the power cord.

PRODUCT OVERVIEW



- 1.Unheated end (cool tip)
- 2.Ceramic coated barrel
- 3.Hair guides
- 4.Left & right rotation switches
- 5.Temperature Indicator lights
- 6.Power button & temperature selection button
- 7.360° swivel cord
- 8.Negative ion emission area

Product specifications

Name: Curling Wand Styler

Model: NV690-32

Rated power:42W

Rated voltage:100-240VAC

HOW TO USE YOUR CURLING WAND/STYLER

- Place on a flat and heat resistant surface, connect to the mains supply.
- To turn on the unit, press and hold the power button (6), the unit will beep once.
- After switching on, subsequent presses of the power button will step through the temperature settings (170-190-210°C), the status of which is shown by the indicator lights (5). After selection, the relevant temperature indicator light will flash on / off to indicate that heating has begun. When the heated barrel has reached the set temperature, the indicator light will stop flashing.

- Press the Left & right rotation switches (4) to change the rotation direction of the hair guides (3). Press and hold for the desired run time. After releasing the switch, the rotation will immediately stop. The timing function commences from the time of release of the direction switches. 3 audible 'beeps' are emitted, 3 seconds after, for 3 second intervals, i.e. 3s-6s-9s second periods to help guide the user.

Auto Off Safety Feature The appliance has a 30 minutes automatic shutdown function. Timed from the last operation, the appliance will automatically turn off if not used. It will heat up again only after pressing the power switch.

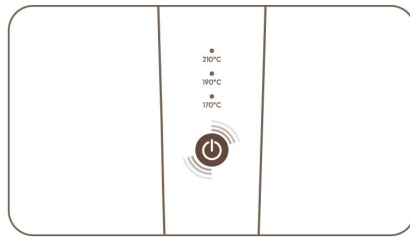
Ionic Technology When heating commences, the internal negative ion generator will operate to assist hair styling and enhance the drying process.

TIPS

- Use lower temperatures for fine, bleached or damaged hair. Medium temperatures for normal, wavy hair, and the Higher temperature for thick or coarse hair. Minimise operating time on the Max temperature to prevent hair damage.
- The styler should be used with dry or only lightly damp hair, never use with wet hair. Before use ensure the hair is sufficiently dry and combed through.

HAIR STYLING

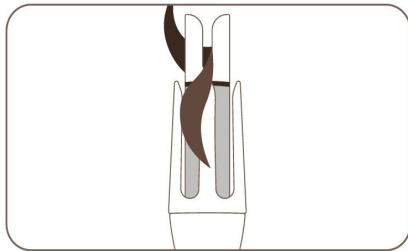
1



Power On & Set Temperature

Plug in the styler and press the power button for 1 second. Choose your desired heat setting: 170°C, 190°C, or 210°C. Once it's heated up, the LED indicator will stop blinking.

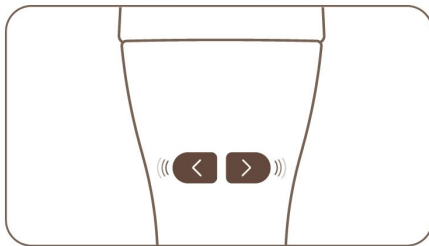
2



Section Your Hair

Divide your hair and select a 2-3cm wide section. Place it into the center of the hair slot.

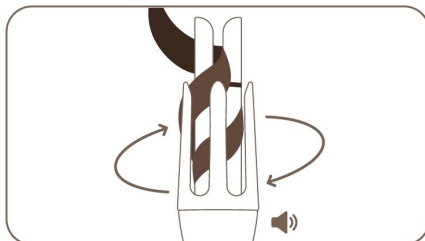
3



Choose Curl Direction

Press the left or right button to automatically wrap the hair around the barrel in your chosen direction.

4



Curl & Listen for beeps

Once the hair is fully wrapped, hold the curler in place. You'll hear a beep at 3, 6 and 9 seconds, release your curl based on how loose or tight you want it.

5



Repeat & Finish Styling

Repeat for each section until you're done. Style as desired and enjoy your curls!

CARE AND MAINTENANCE

- Clean the external surfaces with a soft, slightly damp soft cloth without soap to avoid damage to the plates.
- DO NOT use any abrasive chemical detergents, hard sponges, steel wool or similar for cleaning.
- Always allow the styler to cool down completely before storing away. Store it out of reach of children in a safe and dry place out of direct sunlight.

Responsible Disposal

At the end of its working life, do not throw this product out with your household rubbish.

Electrical and electronic products contain substances that can have a detrimental effect on the environment and human health if disposed of inappropriately.

Observe any local regulations regarding the disposal of electrical consumer goods and dispose of it appropriately for recycling.

Contact your local council for advice on recycling facilities in your area. Please keep the original packaging carton and materials in a safe place. It will help to prevent any damage if the product needs to be transported in the future. In the event it is to be disposed of, please recycle all packaging material where possible.



living & co.

Warranty

We pride ourselves on producing a range of quality home appliances that are both packed with features and completely reliable. We are so confident in our products, we back them up with 1 year warranty.

Now you too can relax knowing that you are covered.

Customer Helpline NZ: 0800 422 274

This Product is covered by 1 year warranty when accompanied by proof of purchase