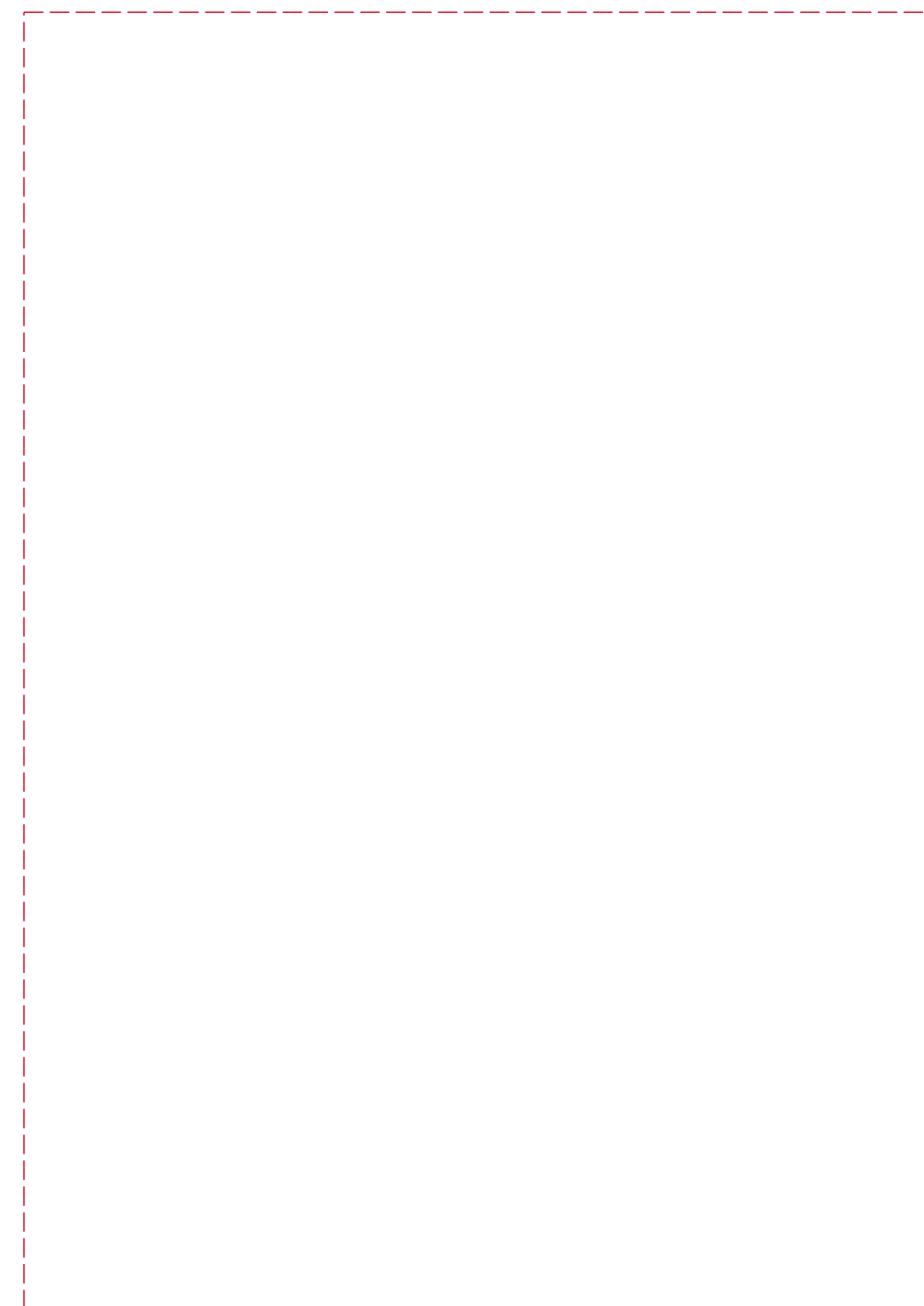




1装订封面



2空白页

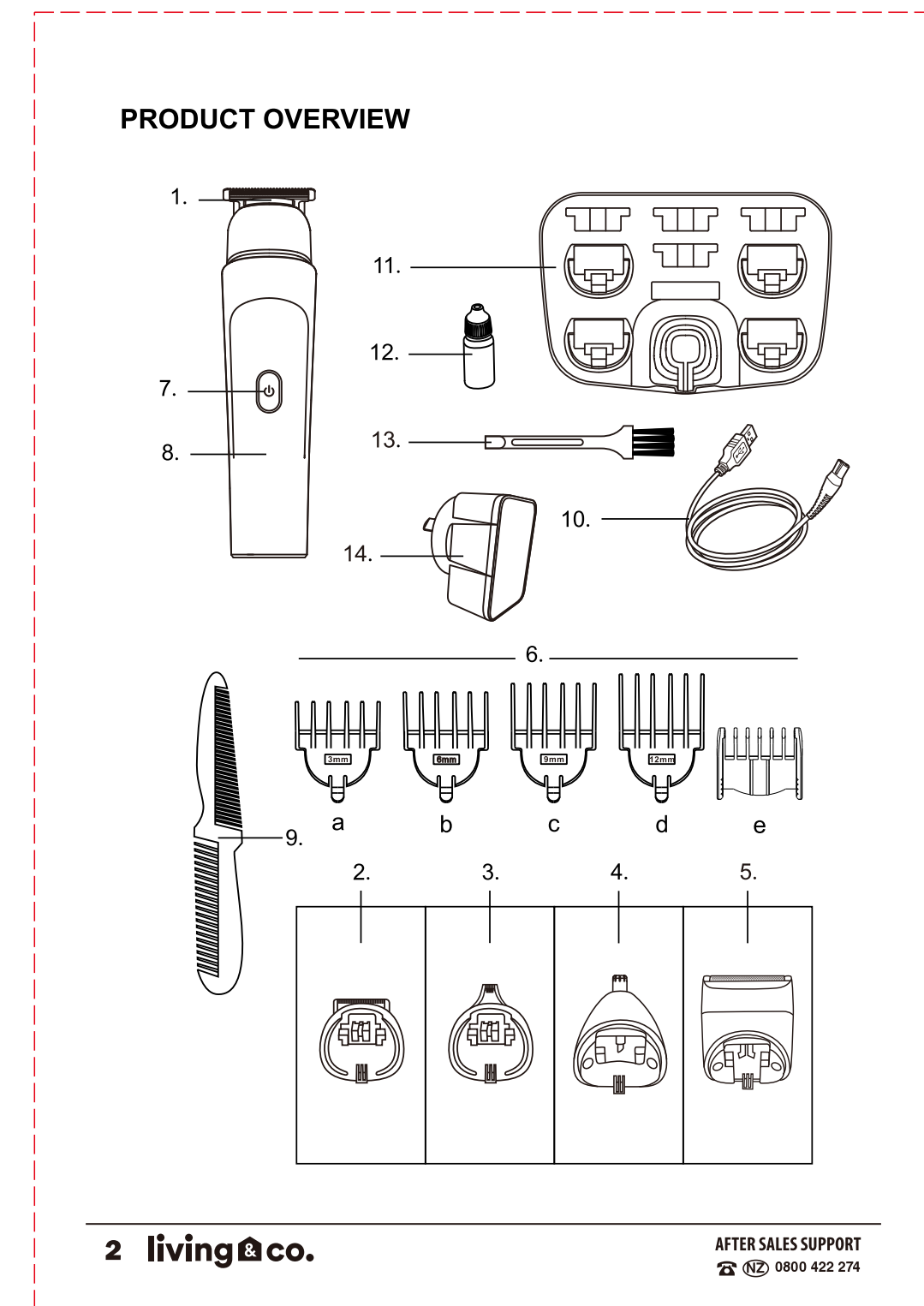
CONTENTS

PRODUCT OVERVIEW	2
PARTS DESCRIPTION	3
IMPORTANT SAFETY INSTRUCTIONS	4
GETTING STARTED	5
REMOVAL AND FITMENT OF TRIMMER HEADS AND ACCESSORIES	6-8
CLEANING AND MAINTAINING YOUR PERSONAL GROOMER	9
HOW TO USE	10-12
CHARGING THE APPLIANCE	13
WARRANTY	14

AFTER SALES SUPPORT
0800 422 274

living & co. 1

3



4

PARTS DESCRIPTION

- Full size trimmer
- Precision trimmer
- Design trimmer
- Nose trimmer
- Micro shaver
- Varying length guide combs
 - For full size trimmer
 - For precision trimmer
- ON/OFF Switch
- Charging indicator light
- Comb
- USB cable
- Stand base
- Lubricating oil
- Cleaning brush
- USB charger

Specifications
Power source: 100-240V~ 50/60Hz
Charging time: 1.5 hours
Battery voltage: 3.7V
Battery capacity: 600mAhx1

AFTER SALES SUPPORT
0800 422 274

living & co. 3

5

IMPORTANT SAFETY INSTRUCTIONS
Warning to Reduce the Risk of Burns, Electrocutation, Fire, Or Injury to Persons:

- An appliance should never be left unattended when plugged into a power outlet.
- Keep the power plug and cord away from heated surfaces.
- Make sure the power plug and cord do not get wet.
- Do not plug or unplug the product with wet hands.
- Do not use the product with a damaged cord.
- Charge, use and store the product at a temperature between 15°C and 35°C.
- Always unplug from the mains when cleaning.
- Only use the parts supplied with the appliance.
- Keep this product out of reach of children. The use of this appliance by persons with reduced physical, sensory or mental capabilities or lack of experience and knowledge can give cause to hazards. Persons responsible for their safety should give explicit instructions or supervise the use of the appliance.

Protect the Environment

- DO NOT DISPOSE THE TRIMMER IN HOUSEHOLD WASTE AT THE END OF ITS USEFUL LIFE.
- DISPOSAL CAN TAKE PLACE AT OUR SERVICE CENTER OR APPROPRIATE COLLECTION SITES.

WARNING: For the purposes of recharging the battery, only use the detachable supply unit provided with this appliance.

AFTER SALES SUPPORT
0800 422 274

4 living & co.

6

GETTING STARTED

Our products are designed to meet a high standard of quality, functionality and design. We hope you enjoy using your new appliance. Please read the instructions for use carefully and keep in a safe place for future reference.

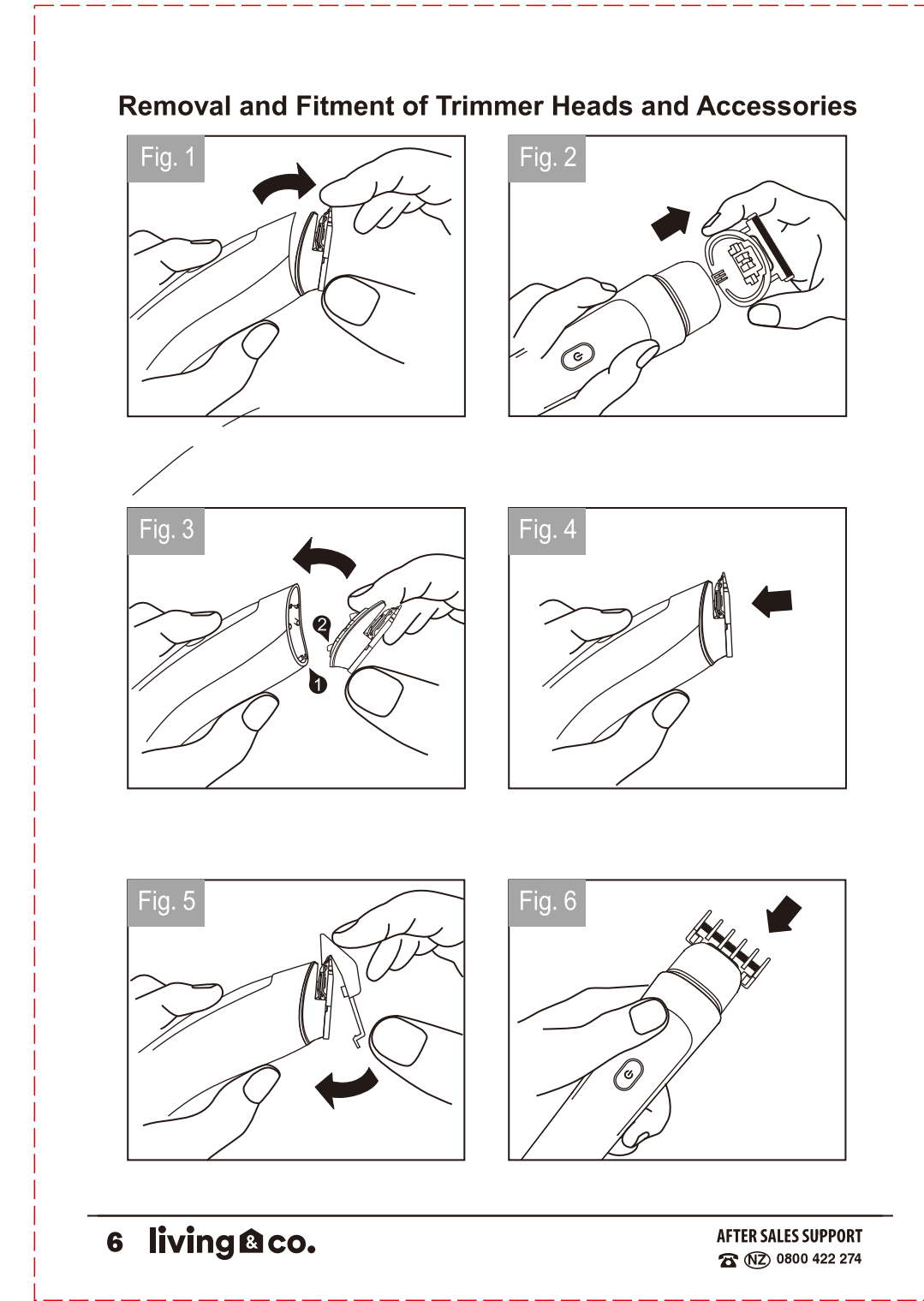
CAUTION Use this appliance only for its intended use as described in this manual. Do not use this product if it is not working correctly, if it has been dropped or damaged, or if it has fallen into water.

- CHARGING YOUR PERSONAL GROOMER:** Before using your personal groomer for the first time, charge for 8 hours. Subsequent charging will take 1.5-3 hours.
- Ensure the product is switched off.
- Connect the charging adaptor to the mains outlet socket and then the outlet lead to the product. The charging indicator will light up.
- Your personal groomer cannot be overcharged. However, if the product is not going to be used for an extended period time (2-3 months), unplug it from the mains and store. Fully recharge your personal groomer when you would like to use it again.
- To preserve the life of your batteries, let them run out every six months then fully charge.
- When changing the trimmer heads or accessories, place the part in the correct position, align with the body and the lock and press the parts to clip into position. (Fig.3-4)
- Removal of the trimmer heads refer picture. (Fig.1-2)
- Match the positioning comb from front to back and lock with the trimmer head. (Fig.5-6).

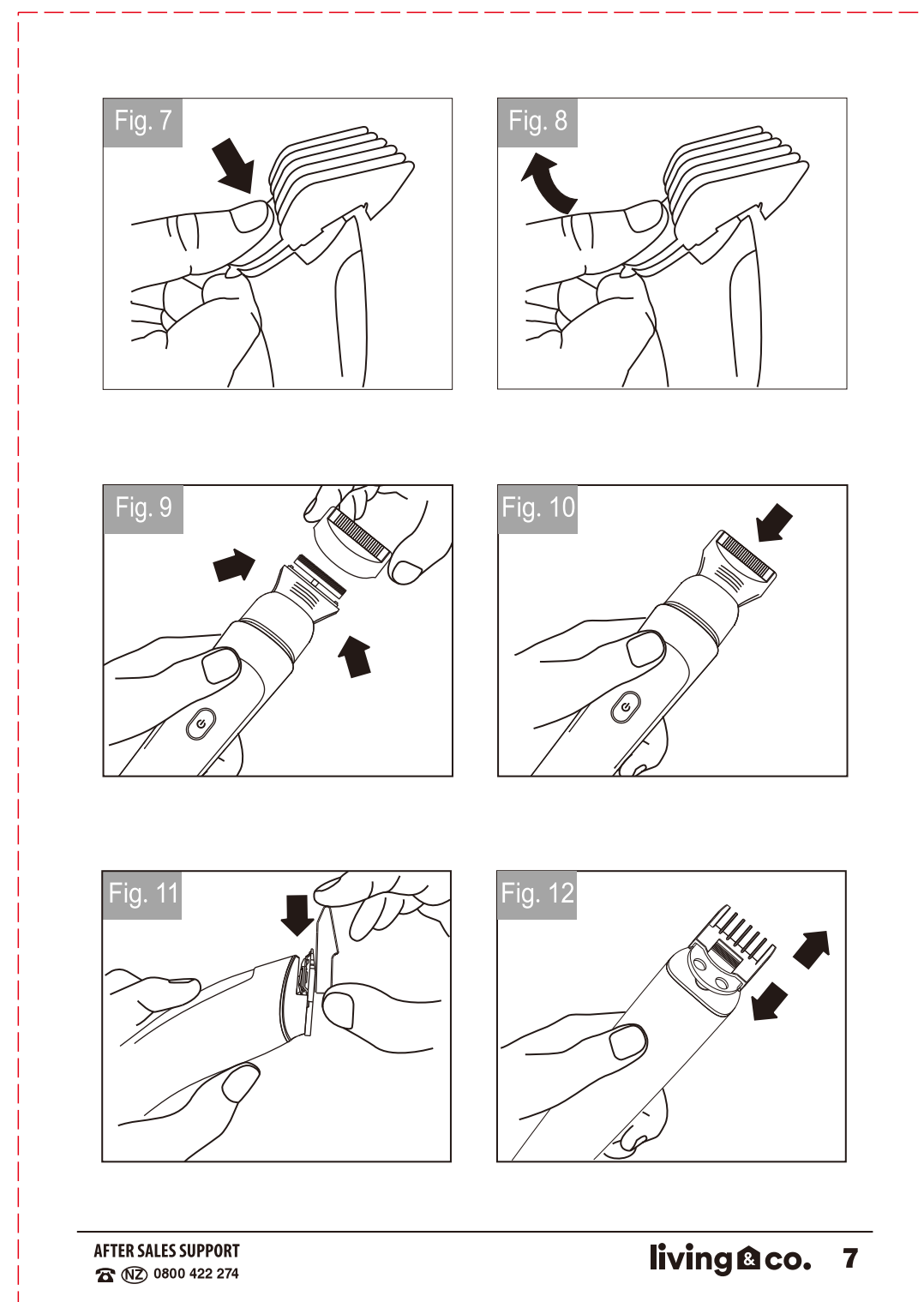
AFTER SALES SUPPORT
0800 422 274

living & co. 5

7



8



9

Guide Combs

- There are four guide combs with varying levels as below.

No.	Level	Length(mm)
1	1	3
2	2	6
3	3	9
4	4	12

- There is one precision guide comb with Adjustable level as below.

No.	Level	Length(mm)
1	1	2.0
2	2	3.5
3	3	5.0
4	4	6.0

- Press down on the arrow button with your thumb and pull upward with index finger to remove the guide comb. (Fig.7-8)
- Press the two sides of the micro shaver attachment and remove out from the body. (Fig.9)
- Press the two sides of the micro shaver attachment and insert to body. (Fig.10)
- Align the precision trimmer positioning comb with the head and clip in position. (Fig.11)
- Choose (one of 4) different level positions by sliding up or down. (Fig.12)

AFTER SALES SUPPORT
0800 422 274

8 living & co.

10

CLEANING AND MAINTAINING YOUR PERSONAL GROOMER

When cleaning the appliance, remove the accessories and trimmer head. Then use the cleaning brush, clear the dust by cleaning the inside parts. (Fig.13-14)

The trimmer heads and accessories can be gently rinsed with water, but it is recommended to immediately dry using a lint free cloth.

AFTER EACH USE

- Turn the personal groomer off.
- Gently brush the remaining hairs away / rinse under warm water from the guide comb and trimmer blade.

CLEANING CAUTIONS

- Only the guide comb attachment and trimmer blade may be removed from the product for cleaning.
- Cleaning should only be done with a soft brush, such as the brush supplied with the product.
- Only use the light-grade oil supplied or sewing machine oil on the blades.
- Do not use harsh or corrosive cleaners on the units or their blades.
- Do not submerge in water as damage will occur.

STORAGE

- Always store this appliance and power supply in a moisture-free area. Do not store it in temperatures exceeding 60°C.

AFTER SALES SUPPORT
0800 422 274

living & co. 9

11

HOW TO USE

To Define the Beard / Moustache Line (Fig.17-18)

- Hold the personal groomer with precision trimmer blade facing you.
- Start with edge of beard/mustache line and gently lower the trimmer blade onto your skin. Use motions towards edge of beard/mustache line to trim to desired locations in facial area and away from beard in neck area.

Trimming Edge of Sideburns (Fig.19-20)

- Hold the personal groomer with precision trimmer blade facing you.
- Start with edge of sideburns, and with the trimmer blades resting lightly against your skin. Use motions towards edge of sideburns line to trim to desired locations in facial area.

AFTER SALES SUPPORT
0800 422 274

10 living & co.

12

HOW TO USE (Continued)

To Thin and Taper the Beard / Moustache (Fig.21-22)

- Attach a guide comb to full size trimmer. If you are trimming for the first time start with the maximum trimming length setting.
- Turn the unit on.
- Place the flat top of the trimmer comb against the skin.
- Slowly slide the personal groomer through the hair. Repeat from different directions as necessary.
- If hair builds up in the trimmer comb during the trimming process, switch the unit off, pull off the comb and brush/rinse off.

Using the Micro Shaver Trimmer (Fig.24)

- Attach the micro shaver trimmer
- Hold the groomer so the micro shaver gently touches your face in a 45 degree angle.
- Use short, well-controlled movements to shave around your beard/mustache.
- Use your free hand to stretch your skin. This encourages the hair to stand upright, making it easier to shave.

NOTE: The micro shaver was designed to shave the detail areas around your beard/mustache/sideburns. It was not designed to shave your entire face.

AFTER SALES SUPPORT
0800 422 274

living & co. 11

13

HOW TO USE (Continued)

To Remove Hair from Nose and Ear (Fig.23)

- Attach nose trimmer attachment.
- Insert the personal groomer gently into nostril or ear.
- Gently move the groomer in and out of the nostril or ear and at the same time rotate.
- Avoid inserting the cutting unit more than 6mm into your nostril or ear.

ATTENTION AND REMOVING THE TRIMMER COMB ATTACHMENT CAUTION: Always ensure the personal groomer is switched off before changing any attachments.

TIPS FOR BEST RESULTS

- Beard, moustache and sideburns hairs should be dry.
- Avoid using lotions before using your personal groomer. Comb your hair in the direction that it grows.
- Remove trimmer comb attachment if you are defining hairline edges such as sideburns, trimming the nape of your neck, trimming your beard line on front of neck.

AFTER SALES SUPPORT
0800 422 274

12 living & co.

14

CHARGING THE APPLIANCE

- Ensure the product is switched off.
- Connect the charging adaptor to the mains socket outlet and then the output lead to the product.

The charging indicator will light up (red in colour).

CAUTION: Do not put in fire or attempt to open the internal battery pack as it may burst or release toxic materials.

Do not throw away the appliance with the normal household waste at the end of its life, but hand it in at an official collection point for recycling. By doing this, you help to preserve the environment.

AFTER SALES SUPPORT
0800 422 274

living & co. 13

15

living & co.

STOP
Read the manual. It will help you get the best out of your product.
Still have questions? Call After Sales Support 0800 422 274

Warranty

We pride ourselves on producing a range of quality home appliances that are both packed with features, and completely reliable. We are so confident in our products, we pack them up with a 1 year warranty.

Now you too can relax knowing that you are covered. Customer Helpline NZ: 0800 422 274

This product is covered by a 1 year warranty when Accompanied by proof of purchase. IM Version 1.0 – August, 2019

AFTER SALES SUPPORT
0800 422 274

14 living & co.

16装订封底