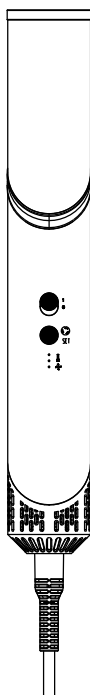


living & co.

Multistyle Hair Dryer



Instruction Manual Model: BY-818

Before operating this hair Dryer, please read these instructions completely and save this manual for future use.

AFTER SALES SUPPORT

  0800 422 274

CONTENTS

Important Safety Instructions 2

Product Overview 4

General operation 5

Accessories..... 6

Care & Maintenance 7

Technical Data 8

Disposal 8

Warranty 9

Important Safety Instructions

The following safety precautions should always be followed, to reduce the risk of electric shock, personal injury or fire. It is important to read all of these instructions carefully before using the product, and to save them for future reference or new users.

Read all the safety instructions before first use of your hair dryer.

WARNING:

THIS APPLIANCE IS LIVE UNTIL THE POWER IS DISCONNECTED AT THE MAINS.

TO AVOID RISK OF ELECTRIC SHOCK:

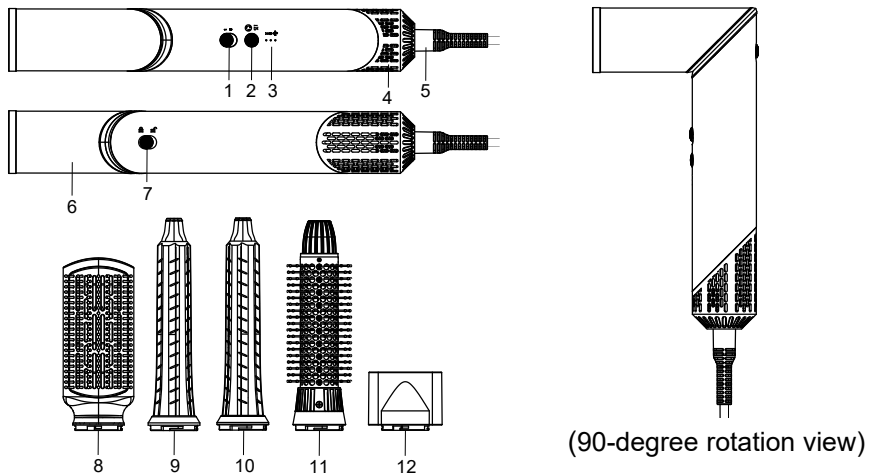


WARNING: Do not use this appliance near bathtubs, showers, basins or other vessels containing water.

- **WARNING:** Do not use this appliance near water.
- When the hairdryer is used in a bathroom, unplug it after use since the proximity of water presents a hazard even when the hairdryer is switched off.
- For additional protection, the installation of a residual current device (RCD) having a rated residual operating current not exceeding 30 mA is advisable in the electrical circuit supplying the bathroom. Ask your installer for advice.
- This appliance is not intended for use by persons (including children) with reduced physical, sensory or mental capacities, or lack of experience and knowledge, unless they have been given supervision or instruction concerning use of the appliance by a person responsible for their safety.
- Children should be supervised to ensure that they do not play with the appliance.
- Burn hazard. Keep appliance out of reach from young children, particularly during use and cool down;
- When the appliance is connected to the power supply, never leave it unattended.
- Always unplug the hairdryer after use.
- Always place the appliance with the stand, if any, on a heat-resistant, stable flat surface.
- Do not use or store the hairdryer where it can come into contact with water.
- If the appliance falls into water, **UNPLUG IT IMMEDIATELY**. Do not reach into the water until the power has been disconnected.
- This hairdryer should never be left unattended when plugged in.


- Do not pull or wrap power cord around the hairdryer.
- Close supervision is necessary when this appliance is used by, on, or near children.
- Do not use attachments not recommended by the manufacturer.
- Never operate the hairdryer if it has a damaged cord or plug or if it has been dropped into water. Return the appliance to a service centre for examination and repair.
- Keep the cord away from heated surfaces.
- Never block the air vents at the rear of the hairdryer, or place it on a soft surface where the air vents free of dust, hair, etc. Do not insert any objects into the air vents.
- Do not use outdoors, or where aerosol products are being used.
- Do not direct hot air toward eyes.
- Attachments may get hot when in use. Use care when handling them.
- Do not put the hairdryer down while it is operating.
- Check that the voltage rating of this appliance matches that of your supply.
- The mains lead of this appliance is not replaceable by the user. If the supply cord is damaged, it must be replaced by the manufacturer, its service agent or similarly qualified persons in order to avoid a hazard.
- Position the power supply lead so that it is not likely to be walked on or pinched by things placed on or against them.
- Do not use the hairdryer in humid or damp conditions. Do not allow the appliance to get wet i.e. dripping or splashing, as this may be dangerous.
- The slots and openings on the appliance are for ventilation. Do not cover or block them as it could lead to overheating.
- NEVER let children push anything into the holes or slots on the hairdryer.

Product Overview



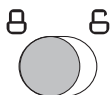
1. Power switch (0: Off, 1: On)
2. SET button: switches the product mode
3. Indicator light:
 Green light = Cold air and high speed (level 1)
 Yellow light = Hot air and low speed (level 2)
 Red light = Hot air and high speed (level 3)
 Flashing green light = Self-clean mode:
Self-clean mode: After normal use and with the power switch set to "0"(off), press and hold the SET button for 5-7 seconds to commence self-cleaning mode, the green light will flash and cool airflow will be reversed to expel from the air inlet grille for approximately 15 seconds. The purpose of this model is to periodically clear the inlet grille.
4. Removable magnetic air inlet cover.
5. Cord guard.
6. 90-degree rotatable outlet barrel.
7. Lock / unlock button for 90-degree rotatable barrel.
8. Hot air paddle brush attachment.
9. Curler (right side air outlet) attachment.
10. Curler (left side air outlet) attachment.
11. 32mm Ø hot air brush attachment.
12. Concentrator attachment.

General operation

- Make sure your hands are completely dry, then unwind the power cable and plug into the mains socket outlet and switch on.
- Switch power button– 0 (off)–1(on).
- Attach your required attachment to the air outlet barrel, align and turn clockwise until it clicks in position. Counterclockwise and pull to remove.
- The hair dryer can operate in the straight position, or with the end barrel adjusted to a 90 degree angle. To adjust, press and hold the lock / unlock button  to the unlock position then rotate the barrel in a clockwise direction to 90 degree. You can revert by unlocking and turning in the opposite direction. The position of use will depend on your personal preference, see instruction below.
- Press the SET button to select the desired mode, represented by the indicator light, green light = cold air and high speed; yellow light = hot air and low speed; red light = hot air and high speed.
- When you have finished, set the power switch to the off (0) position.

Lock for change of orientation

This lock is used to switch from the hair dryer function to the styler function and vice-versa.



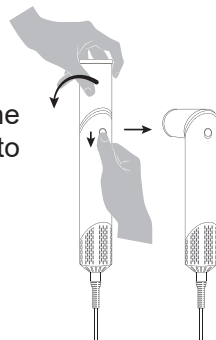
Perform the following actions when the appliance is switched off.

Styler → Hair dryer

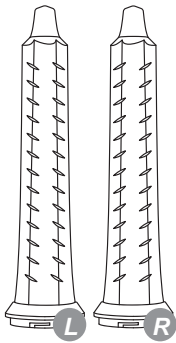
Slide the lock lever down and rotate the nozzle to the left to switch to the hair dryer function. Continue to rotate until the nozzle clicks into place.

Hair dryer → Styler

Slide the lock lever down and rotate the nozzle to the right to switch to the styler function. Continue to rotate until the nozzle clicks into place.



Accessories



Curlers

Function: *Create waves, ringlets and curls*

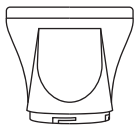
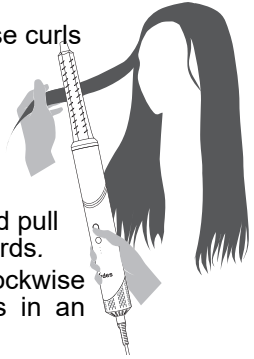
Ideal to create glamorous or textured, loose curls for longer hair lengths.

Recommended Level: 3 (Red Light)

Process: Bring a small strand of slightly damp hair to the curler so that the ends of the hair wind around the accessory. Then roll around the rest of the length.

Once the hair is dry, turn off the styler and pull out the hair by moving the device downwards.

Use the left curler **L** for curls in a clockwise direction and the right curler **R** for curls in an anti-clockwise direction.



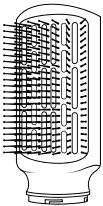
Concentrator

Function: *Dry and fix the style*

Provides concentrated airflow allowing you to target specific sections of your hair.

Recommended Level: 2 (Yellow light)

Process: Carefully dry the hair starting from the roots until it reaches the tips. Using a round brush, perform the preferred styling.



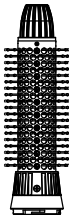
Hot Air Paddle Brush

Function: *Sc / A / Ultrastraighten*

Provides smooth results without disrupting the natural pattern of wavy or curly hair, while delivering powerful airflow to help style.

Recommended Level: 3 (Red Light)

Process: Slide the brush from the roots to the tips with damp hair. Repeat the procedure and perform the preferred styling.



32mm Ø Hot Air Brush

Function: *Drying or Styling*

Defrizzes, adds volume & bounce, and can help to style curls.

Recommended Level: 2 or 3

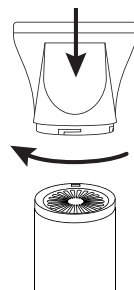
Process: Slide the brush from the roots to the tips with damp hair. Repeat the procedure until the hair is dry and smooth and perform the preferred styling.

NOTE: The drying times may vary depending on the moisture level and hair type. Do not leave hair in contact with the hot elements for too long to avoid damage.

Accessory fitment

When the appliance is switched off, place the chosen accessory on the nozzle and rotate the accessory clockwise. To remove the accessory, turn off the appliance and wait for it to cool down.

Rotate the accessory anti-clockwise and remove it.



Care & Maintenance

- **WARNING** - always unplug your appliance before cleaning.
- Your hair dryer requires very little attention. You can clean it together with its accessories, using a slightly damp cloth. Never clean your appliance with solvent based cleaners or abrasive cleaners.
- Never immerse your appliance or its accessories in water.
- Carefully dry all parts you have just cleaned.
- Keep the air inlet and outlet grilles clean, removing dust or hair; clean them at least once a month. In case of frequent use it may be necessary to clean them more often.
- The air inlet grille can be detached as shown in the image. Use a soft brush to dislodge dust build up.
- It is recommended to periodically activate the Self-clean mode. This will depend on the frequency of use and if there is any visual indications of dust or hair on the air inlet grille however, monthly activation is recommended to maintain product efficiency. Refer instructions for activating this mode under product overview, earlier in this manual.



Technical Data

| Model name | Rated Voltage | Frequency (Hz) | Rated power input (W) |
|------------|---------------|----------------|-----------------------|
| BY-818 | 220-240V | 50-60 | 1500W |

Disposal

At the end of its working life, do not throw this product out with your household rubbish. Electrical and electronic products contain substances that can have a detrimental effect on the environment and human health if disposed of inappropriately. Observe any local council regulations regarding the disposal of electrical consumer goods and dispose of it appropriately for recycling. Contact your local council for advice on recycling facilities in your area.

Please keep the original packaging carton and materials in a safe place. It will help to prevent any damage if the product needs to be transported in the future. In the event it is to be disposed of, please recycle all packaging material where possible.

living & co.



Warranty

We pride ourselves on producing a range of quality home appliances that are both packed with features, and completely reliable. We are so confident in our products, we back them up with a one year warranty when accompanied by proof of purchase.

Now you too can relax knowing that you are covered.

Customer Helpline NZ: 0800 422 274

IM Version 1.0 – Sept.,2024