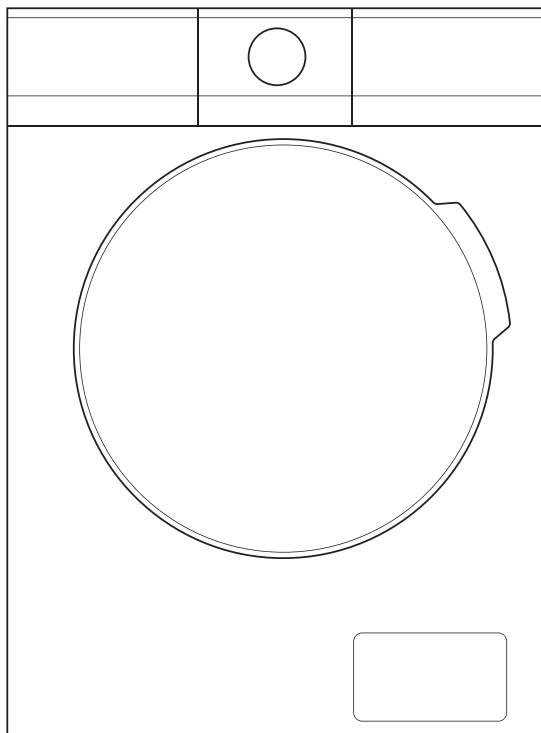




## Washing Machine

Model: MFM80-U1401B/C14E-AU



## User Manual

# TABLE OF CONTENTS

1. Safety instructions	P. 3
2. Product overview	P. 6
3. Installing the product	P. 7
4. Operating the washing machine	P. 10
5. Maintenance	P. 18
6. Troubleshooting	P. 20
7. Technical specifications	P. 21
8. Responsible disposal	P. 21

# 1. Safety instructions

For your safety, the information in this manual must be followed to minimize the risk of fire or explosion, electric shock, or to prevent property damage, personal injury or loss of life.

## **Electric shock!**

- If the supply cord is damaged, it must be replaced by the manufacturer, its service agent or similarly qualified persons in order to avoid a hazard.
- The new hose-sets supplied with the appliance are to be used and old hose-sets should not be reused.
- Before any maintenance of the device, disconnect the appliance from the mains.
- Always unplug the machine and turn off the water supply after use.
- To ensure your safety, the power plug must be inserted into an earthed three-pole socket. Check carefully and make sure that your socket is properly and reliably earthed.
- The water and electrical devices must be connected by a qualified technician in accordance with the manufacturer's instructions and local safety regulations.

## **Risk to children!**

- This appliance is not intended for use by persons (including children) with reduced physical, sensory or mental capabilities or lack of experience and knowledge unless they have been given supervision or instruction concerning use of the appliance by a person responsible for their safety.
- Children of less than 3 years should be kept away unless continuously supervised.
- Animals and children may climb into the machine. Check the machine before each use.
- Do not let children play with the machine.

- The glass door may be very hot during the operation. Keep children and pets far away from the machine during the operation.

### **Risk of explosion!**

- Do not wash or dry articles that have been cleaned in, washed in, soaked in, or dabbed with combustible or explosive substances such as wax, oil, paint and gasoline. Otherwise, it may cause fire or explosion.

### **Installation of the product**

- This washing machine is for indoor use only.
- It is not intended to be built-in.
- The openings must not be obstructed by a carpet.
- This washing machine must not be installed in a bathroom, a very wet room, or any room with explosive or caustic gases.
- Make sure the water pressure in your water supply facility is between 0.05MPa and 1MPa. If the water pressure is too high or too low, the appliance may not be able to operate properly, and it may also result in material damage or damage to the appliance.
- The washing machine with single inlet valve can only be connected to the cold water supply. The product with double inlet valves should be correctly connected to the hot water and cold water supply.
- The power plug must be accessible after installation.
- Remove all packing materials and transport bolts before using the appliance. Otherwise, serious damage may result.

### **Risk of damaging the appliance!**

- Your product is only for home use and is only designed for the textiles suitable for machine washing.
- Do not climb up and sit on the top cover of the machine.
- Do not lean against the machine door.

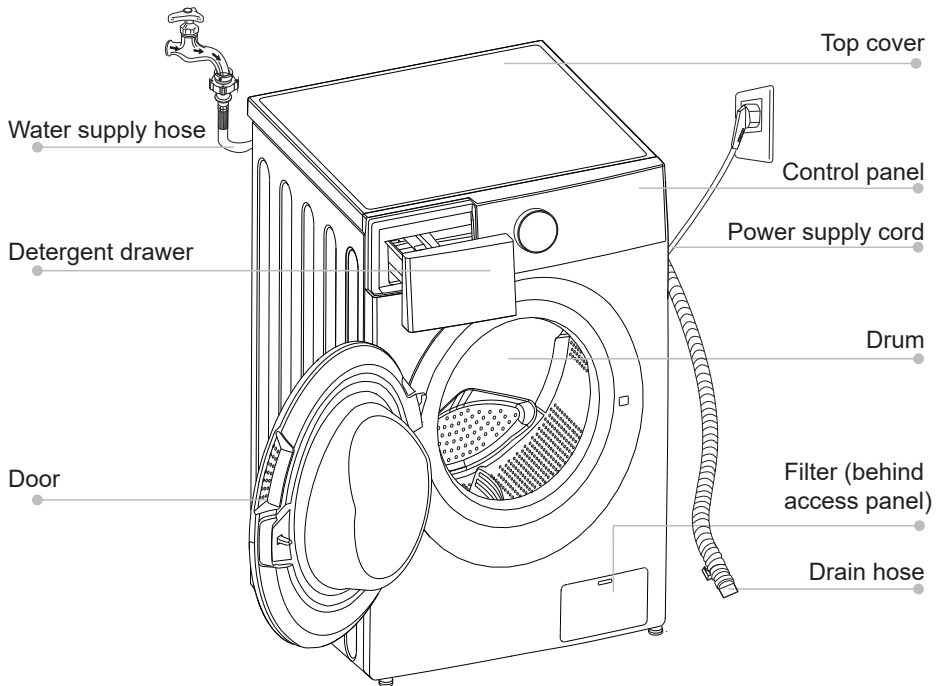
- Cautions to take when transporting the machine:
  1. Transport bolts must be reinstalled to the machine by a qualified person.
  2. The remaining water should be drained out of the machine.
  3. Handle the machine carefully. Never hold any protruded part on the machine while lifting it. The machine door cannot be used as a handle for carrying or moving the machine.
  4. This machine is heavy. Transport it with care.
- Do not close the door with excessive forces. If closing the door is difficult, make sure the load is distributed evenly and not excessive.
- Never wash carpets with this machine.

### **Operation of the appliance**

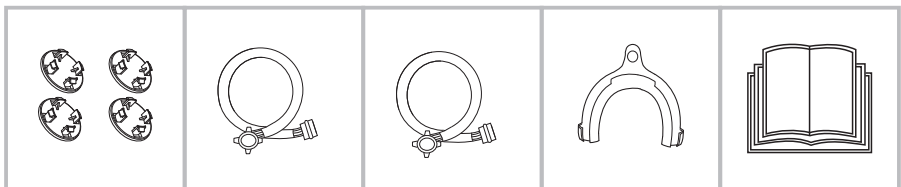
- The maximum washing capacity of this washing machine is 8.0kg. Do not overload the washing machine.
- Before washing clothes for the first time, you must run a complete cycle of washing machine without clothes.
- Flammable, explosive or toxic solvents are forbidden, including gasoline and alcohol. They must not be used as detergents. Only use detergents suitable for machine washing.
- Make sure that all pockets have been emptied. Sharp and rigid items such as coins, brooches, nails, screws and stones may cause serious damage to this machine.
- Check whether the water inside the drum has been drained before opening its door. Do not open the door if there is any water visible.
- Be careful to prevent burning when the product drains hot washing water.
- Never refill the water by hand during washing.

## 2. Product overview

### 2.1 Main parts



### 2.2 Accessories



4 x Hole plug

1 x Inlet hose  
(cold water)

1 x Inlet hose  
(hot water)  
(optional)

1 x Drain hose  
support (optional)

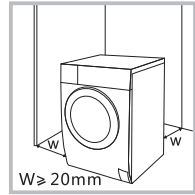
1 x User manual

## 3. Installing the product

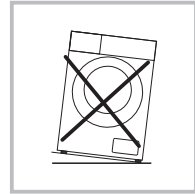
### 3.1 Selecting a location

Before installing the appliance, select a location that matches the following criteria:

- Rigid, dry, and level surface
- Not exposed to direct sunlight
- Has sufficient ventilation
- Has a room temperature above 0°C
- Far away from heat sources such as coal or gas.



Ensure that the appliance is not placed on the power cord.  
Do not install the appliance on carpeted floor.

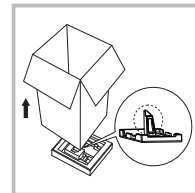


### 3.2 Unpacking the washing machine

#### Warning!

- Packing materials can be dangerous for children.
- There is a risk of suffocation! Keep all packing materials well away from children.

1. Remove the cardboard box and the plastic packaging.
2. Lift the washing machine and remove the foam base.
3. Remove the tape securing the power supply cord and drain hose.
4. Remove the inlet hose from the drum.
5. Dispose of all packing materials properly.



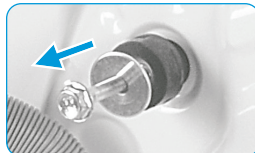
**Note:** Water droplets may be visible in the drum. This is normal as each machine is tested before delivery.

### 3.3 Removing the transport bolts

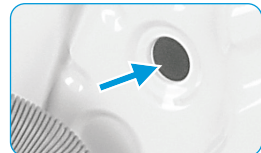
**Important:** The transport bolts installed on the back of the machine are designed to support the internal components during transit. They **MUST** be removed before use.



Loosen the 4 transport bolts with a spanner.



Remove the bolts including the rubber parts and keep them for future use.

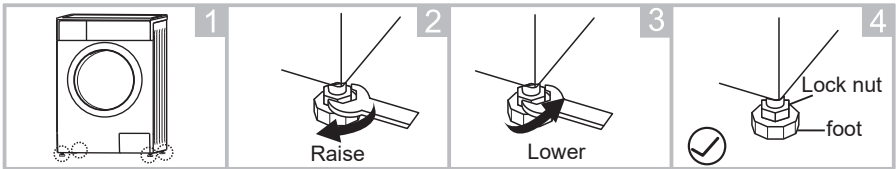


Cover the holes using the supplied hole plugs.

### 3.4 Levelling the washing machine

**Important:** The lock nuts on all four feet must be screwed tightly against the housing.

1. Check if the legs are closely attached to the cabinet. If not, turn them to their original positions and tighten the lock nuts.
2. Loosen the lock nut.
3. Turn the foot until it reaches the floor.
4. Adjust the legs and lock the nuts again with a spanner. Make sure the machine is level and steady after the adjustment.



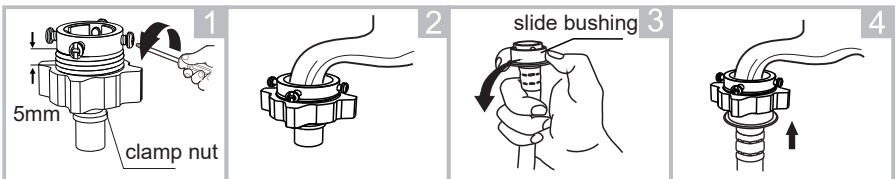
### 3.5 Connecting the inlet hose

**Notes:**

- To prevent water leakage and damage caused by it, follow these instructions,
- Do not kink, crush or modify the inlet hose.

There are two ways to connect the inlet hose.

1. Connect the inlet hose to an ordinary water tap:



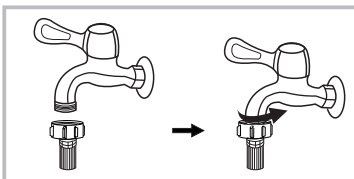
Loosen clamp nut and four bolts of the base

Tighten clamp nut

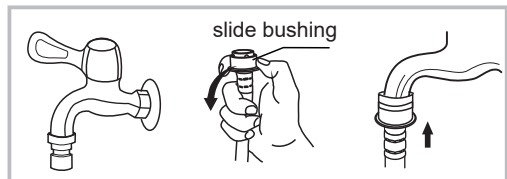
Pull down slide bushing of inlet hose

Insert inlet hose into the base

2. Connect the inlet hose to a threaded or washing machine water tap:



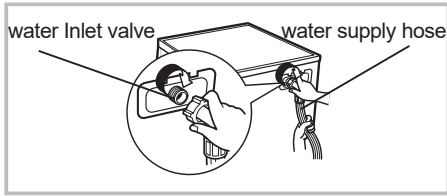
Connect the inlet hose to a threaded water tap



Connect the inlet hose to a washing machine water tap

**NOTE:** Connect manually, do not use tools to over tighten. Ensure connections are secure.

Connect the other end of inlet hose to the water inlet valve on the back of the machine and fasten it by turning the screw clockwise.



### 3.6 Connecting the drain hose

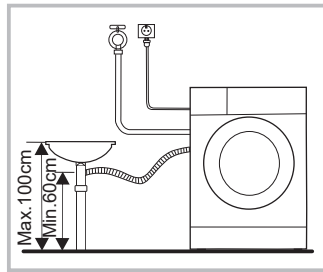
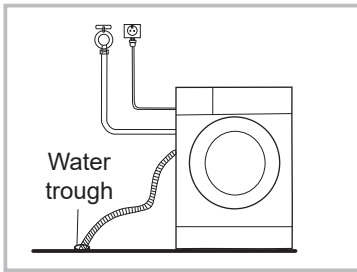
#### Warning!

- Do not kink or protract the drain hose.
- Connect the drain hose properly to ensure your property will not be damaged by water leakage.

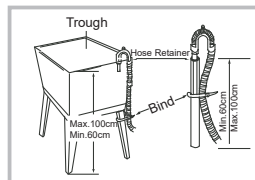
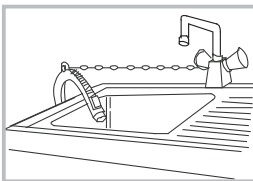
There are two ways to connect the end of the drain hose:

1. Put it into the water trough.

2. Connect it to the drain pipe under a basin.



If your machine comes with a drain hose support, install it as shown below.



#### Notes:

- When installing the drain hose, ensure reliably fixed, use a cable tie or string to further secure if required.
- If the drain hose is too long, you may cut off a portion to make it shorter.

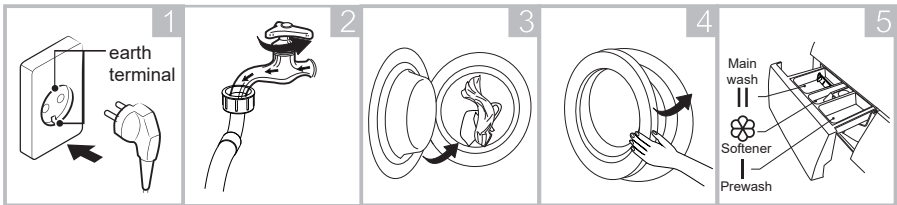
## 4. Operating the washing machine

### 4.1 Quick start guide

#### Caution!

- Before using the washing machine, make sure it has been installed correctly including a check that the Transport Bolts have been removed!
- Before washing clothes for the first time, you must run a complete cycle of a washing program without clothes.

#### 1. Before washing



Plug in machine

Turn on tap

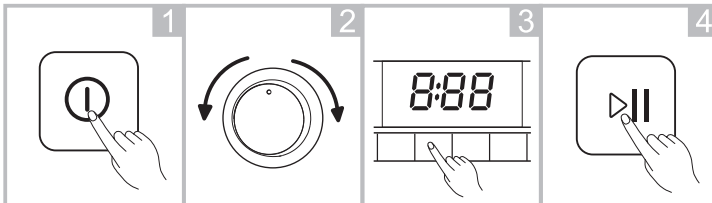
Load clothes

Close door

Add detergent

**Note:** Add detergent to compartment I only if you are going to use the Prewash function.

#### 2. Washing



Power on

Select a  
program

Change the  
default settings  
if needed

Press **Start/**  
**Pause** to start  
the program

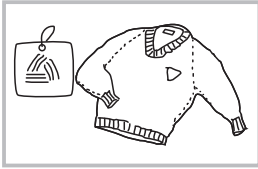
**Note:** If you want to use the default settings, skip step 3.

#### 3. After washing

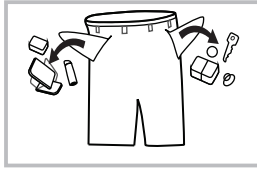
The machine will beep and display "End" on the control panel.

## 4.2 Preparing your laundry

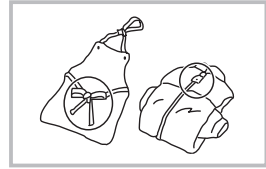
Please check the washing label on each garment and follow the washing instructions on it. Use detergent suitable for machine washing.



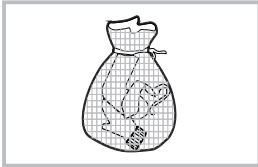
Check washing labels



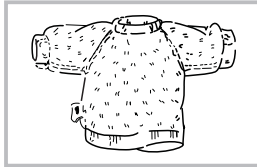
Remove all items from pockets



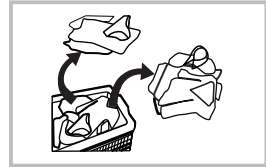
Tie up loose strings, close zippers



Put small items into the mesh bags



Turn thick clothes inside out



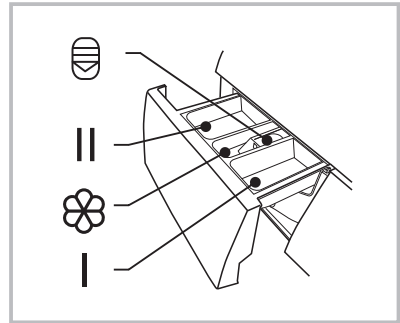
Separate clothes with different textures

### Warning!

- Washing a single large item (such as a large jacket) may cause load imbalance. It is recommended to add more items to be washed together to ensure each spin is done smoothly.
- Never wash clothes stained with chemicals such as gasoline, petroleum, benzene, paint thinner, and alcohol.
- Do not use the machine to wash waterproof items (e.g. ski suits, plastic raincoats, and car covers).

### 4.3 Detergent drawer

- I Prewash detergent
- II Main wash detergent
- ☼ Softener
- ⊖ Release button to pull out the dispenser



Pull out the drawer

#### Notes:

- Add detergent to compartment I only if you are going to use the Prewash function.
- Do not put laundry beads into the detergent drawer.

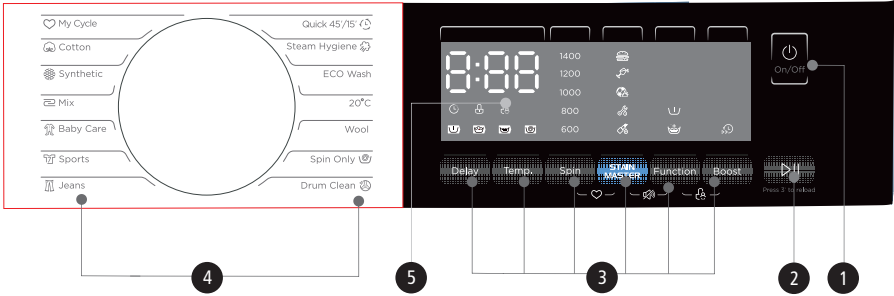
Program	I	II /	☼	Program	I	II /	☼
Cotton	○	●	○	Quick 45' / 15'		●	○
Synthetic	○	●	○	Steam Hygiene	○	●	○
Mix	○	●	○	ECO Wash		●	○
Baby Care	○	●	○	20°C		●	○
Sports	○	●	○	Wool		●	○
Jeans	○	●	○	Spin Only			
				Drum Clean			

● Mandatory    ○ Optional

#### Tips:

- If the washing powder has caked together or has solidified, it is suggested to use some water to dilute the powder to prevent the detergent draw from being blocked or overflowing with water.
- Choose suitable detergents for the various washing temperatures to get the best washing performance with less water and energy consumption.

## 4.4 Control Panel



- 1 On/Off**  
Turn the appliance on and off.
- 2 Start/Pause**  
Start or pause the wash cycle.
- 3 Programs**  
Select a program suitable for the laundry type.
- 4 Display**  
The display shows settings, estimated remaining time, options and status messages.
- 5 Options**  
Select additional washing options.

This diagram provides a detailed view of the control panel with lettered callouts A through I pointing to specific features:

- A Display**: Shows the digital display and its various settings.
- B Pre Wash**: Points to the Pre Wash icon.
- C Door Lock**: Points to the Door Lock icon.
- D Child Lock**: Points to the Child Lock icon.
- E Delay**: Points to the Delay icon.
- F Boost**: Points to the Boost icon.
- G Stain Master**: Points to the Stain Master icon.
- H Extra Rinse**: Points to the Extra Rinse icon.
- I Pre Wash-Wash-Rinse-Spin**: Points to the Pre Wash-Wash-Rinse-Spin icon.

A Display	
Wash Time	Delay Time
1:25	2H
Speed	Error
600	E 30
End	Temp.
End	30

## 4.5 Options



### Delay

To use the Delay function:

1. Select a program
2. Press the Delay button to choose the delay time (between 0 and 24 hours.)
3. Press [Start/Pause] to commence the delay operation



Choose the Program



Setting time



Start

Cancel the Delay function:

Press the [Delay] button until the display be 0H. It should be pressed before starting the program. If the program already started, press the [On/Off] button to reset the program.

### Tip:

If there is a break in the power supply while the machine is operating, a special memory stores the current program and when the power is restored, the program will resume.



### Prewash

The Prewash function provides an extra wash before the main wash. It is suitable for washing very dirty clothes. You need to put detergent into compartment I of the detergent drawer if you are going to use this function.



### Boost

The function decreases the wash time.



### Extra Rinse

The laundry will undergo an extra rinse after you select this.



### My Cycle

To let the machine memorise the currently selected program: Press and hold [Spin] and [STAIN MASTER] for 3 secs before commencing the wash cycle. The default cycle is cotton.



### Reload

To add more clothes into the machine when a program is in progress, follow these steps:

1. Press and hold [Start/Pause] for 3 seconds.
2. Wait until the drum stops rotating and the door lock is unlocked.
3. Open the door and add your clothes.
4. Close the door and press [Start/Pause] to resume the program.



Press [Start/Pause] 3sec.



Reload the clothes



Start

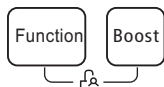
### Note:

When the drum is rotating or there is large amount of water with high temperature in the drum, do not try to open the door.



### Child Lock

Use this function to prevent misuse by children.



Press and hold [Function] and [Boost] for 3 seconds until you hear a beep.

- When the Child Lock is activated, the display will alternately show “CL” and the remaining time.
- The Child Lock will lock all buttons except Power button and Child Lock button.
- Only the simultaneous pressing of the two buttons can deactivate the Child Lock!
- Please deactivate the Child Lock before selecting a new program.



### Mute the buzzer



Choose a program



Press and [STAIN MASTER] and [Function] buttons for 3 seconds.

To unmute the buzzer, press and hold the 2 buttons again for 3 seconds.

**Note:** After muting the buzzer, you will hear no notification sounds from the machine.

## 4.6 Other Functions



### Temp.

Press the button to regulate the temperature (Cold, 20°C, 30°C, 40°C, 60°C, 90°C)



### Spin

Press the button to change the spin speed (1400: 0-600-800-1000-1200-1400).

Program	Default Speed (rpm)	Program	Default Speed (rpm)
Quick 45' / 15'	800	Jeans	800
Steam Hygiene	1000	Sports	800
Eco Wash	1000	Baby Care	1000
20°C	1000	Mix	1000
Wool	600	Synthetic	1000
Spin Only	1000	Cotton	1000
Drum Clean	-	-	-

## 4.7 Programs

Various programs are available to suit different laundry types.

<b>Program</b>	<b>Description</b>
Cotton	Wash hard-wearing textiles, heat-resistant textiles made of cotton or linen.
Synthetic	Wash synthetic clothes such as shirts and coats. While washing knitted textiles, detergent quantity should be reduced due to their loose string construction and easily forming bubbles.
Baby Care	Wash baby clothes. This program improves rinse and cleaning performance to better protect baby skin.
Jeans	Wash jeans / denim.
Mix	Wash mixed load consisting of textiles made of cotton and synthetics.
20°C	Wash clothes with 20°C water (default).
Spin Only	Extra spin with selectable spin speed.
ECO Wash	This program is specially designed for economy, but still effectively washing normally dirtied cotton textiles.
Drum clean	Wash delicate, machine-washable textiles, e.g. those made of silk, satin, synthetic fibres or blended fabrics.
Wool	Wash machine-washable wool textiles. This gentle wash program can prevent shrinkage of the textiles.
Sports	Wash sportswear.
Steam Hygiene	Deeply penetrates textile fibres to help eliminate bacteria / germs and preventing odours.
Quick 45' / 15'	This program defaults to 45', press the [boost] button to change to 15'. Suitable for washing a smaller quantity of lightly dirtied items quickly.

---

## 4.8 Program selection guide

Program	Load (kg)	Water temperature (°C)	Wash Time
	8.0	Default	Default
Quick 45' / 15'	2.0	20	0:45
Steam Hygiene	4.0	60	2:28
ECO Wash	8.0	30	0:59
20°C	4.0	20	1:01
Wool	2.0	40	1:07
Spin Only	8.0	-	0:12
Drum Clean	-	90	1:18
Jeans	8.0	30	1:35
Sports	4.0	20	0:47
Baby Care	8.0	60	2:01
Mix	8.0	40	0:58
Synthetic	4.0	40	1:25
Cotton	8.0	40	1:28

- Cotton, Mix, Synthetic are auto Weighting programs. When these 3 programs are selected, the washing machine will automatically adjust the appropriate water level and wash time according to the weight of the laundry during the cycle.
- “ECO Wash ” is the standard washing program to which the information in the energy label relates. The program is suitable to clean normally soiled / dirtied cotton laundry. This program is the most efficient program in terms of combined energy and water consumption for washing cotton laundry. The actual water temperature may differ slightly from the declared cycle temperature.

**Note:** The parameters on this table are for user reference only. The actual parameters may be different from those on the above table.

## 5. Maintenance

### 5.1 Cleaning

#### Warning!

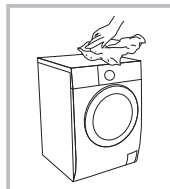
Before maintenance, pull out the power plug and turn off the water supply tap.

#### 5.1.1 Cleaning the cabinet

Proper maintenance of the appliance can extend its working life. The surface can be cleaned with diluted non-abrasive neutral detergents when necessary. If there is any water overflow, use a wet cloth to wipe it off immediately. Avoid scraping the appliance's surface with sharp objects.

#### Note:

- Do not use formic acid, its diluted solvents, or any equivalent.



#### 5.1.2 Cleaning the drum

Any rust left inside the drum by metal objects must be removed immediately with chlorine-free detergents.

Do not use steel wool.

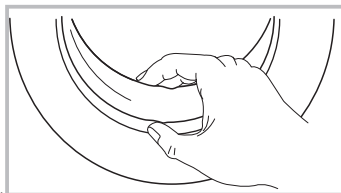
#### Note:

- Don't put laundry in the washing machine during the drum cleaning.

#### 5.1.3 Cleaning the door seal and glass

Wipe the glass and seal after each wash to remove lint and stains. If lint builds up, it can cause leaks.

Remove coins, buttons and other objects from the seal after each wash.

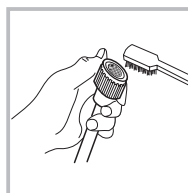
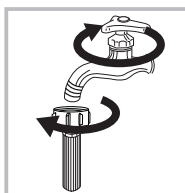


#### 5.1.4 Cleaning the inlet filters

The inlet filters should be cleaned if there is insufficient water from the tap.

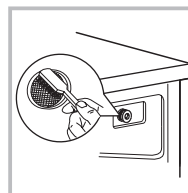
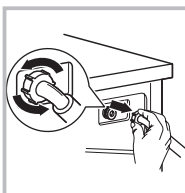
#### Cleaning the tap inlet filter

1. Turn off the tap.
2. Remove the water supply hose from the tap.
3. Clean the tap filter.
4. Reconnect the water supply hose.



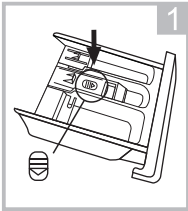
#### Cleaning the filter in washing machine:

1. Screw off the inlet pipe from the back of the machine.
2. Pull out the filter with long nose pliers and reinstall it back after cleaning it.
3. Use a brush to clean the filter.
4. Reconnect the inlet pipe.

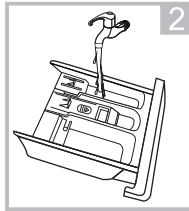


### 5.1.5 Cleaning the detergent drawer

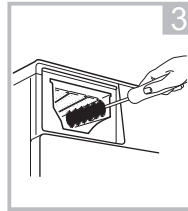
1. Press down the arrow location on the softener cover inside the drawer.
2. Lift the clip up and take out the drawer. Then wash all grooves with water.
3. Reinstall the softener cover and push the drawer back into position.



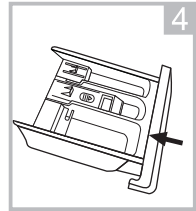
Press A and pull out the drawer



Clean the drawer with water



Clean inside the recess with a toothbrush

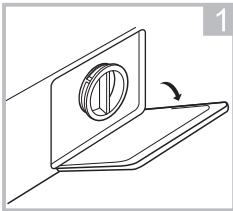


Push the drawer back into position

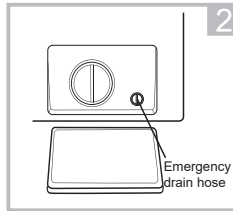
### 5.1.6 Cleaning the filter

#### Notes:

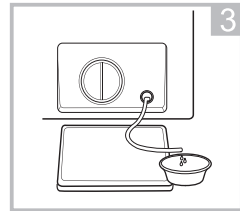
- Make sure the machine has finished the wash cycle and is empty. Switch it off and unplug it before cleaning the filter.
- Be careful of hot water. Allow the water to cool down first to prevent scalding.
- Clean the filter at least every 3 months to ensure normal operation of the machine.



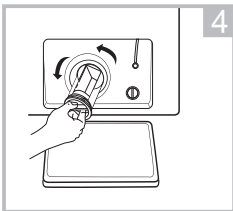
Open the filter cover



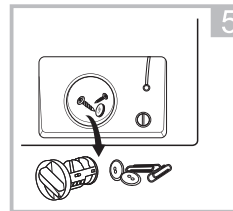
Rotate the knob by 90°, pull out the emergency drain hose, and take off the hose cap



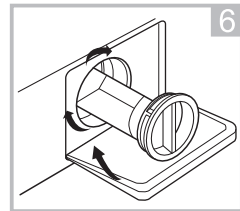
Drain and then replace the emergency drain hose.



Turn the filter anticlockwise and take it out



Remove external matters



Reinstall the filter and close the cover

**Notes:**

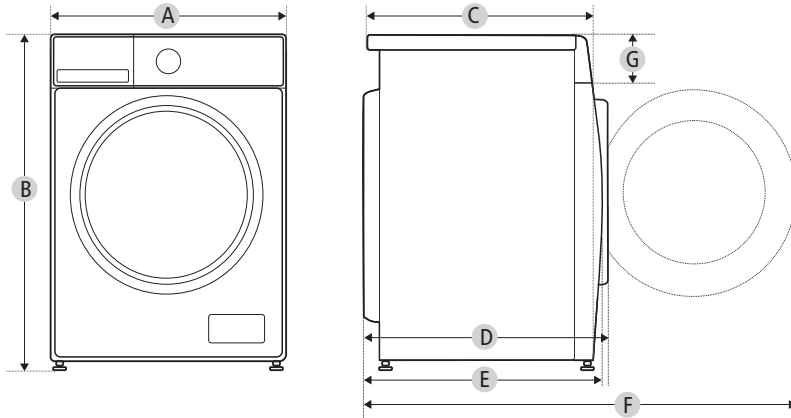
- Make sure you reinstall the emergency drain hose properly to prevent water leakage.
- There may be hot water in the filter while the machine is in use, depending on the selected program. Never open the filter cover during a wash cycle. Always wait until the machine has finished the wash cycle and is empty. Make sure that the filter cover is tightly secured during replacement.

## 6. Troubleshooting

If the machine has a problem, follow the guide below to try and resolve it. If you are unable to fix it, contact the after sales support.

<b>Problem</b>	<b>Possible cause</b>	<b>Solution</b>
Washing machine cannot start up	Door is not closed properly	Close the door properly Check if any clothes are stuck
Door cannot be opened	The machine's safety features have been engaged	Disconnect the power and restart the machine
Water leakage	Water supply hose or drain hose is not connected properly	Reconnect water supply hose or drain hose properly Make sure they are not blocked
Detergent residue in detergent drawer	Detergent is dampened or agglomerated	Clean up detergent drawer
Indicator or display does not light up	The power is disconnected	Check if the power is on and the power plug is connected correctly
Abnormal noise	Transport bolts still fitted. Floor is not solid or level.	Check if the transport bolts have been removed Ensure machine is placed on a solid and level floor
<b>Displayed error</b>	<b>Possible cause</b>	<b>Solution</b>
<b>E30</b>	Door is not closed properly	Close the door properly Check if any clothes are stuck
<b>E10</b>	Water injecting problem while washing	Check if the water pressure is too low Straighten the water pipe Check if the inlet filters are blocked
<b>E21</b>	Water draining took too long	Check if the drain hose is blocked
<b>E12</b>	Water overflow	Restart the machine
<b>EXX</b>	Others	Restart the machine

## 7. Technical specifications



Model	MFM80-U1401B/C14E-AU
Power Supply	220-240V~,50Hz
MAX.Current	10A
Standard Water Pressure	0.05MPa~1MPa
Washing Capacity	8.0kg
Dimension	
A	595mm
B	850mm
C	475mm
Weight	63kg
Rated Power	1950W
Reference Dimension	
D	535mm
E	521mm
F	985mm
G	135mm

## 8. Responsible disposal

At the end of its working life, do not throw this appliance out with your household rubbish. Electrical and electronic products contain substances that can have a detrimental effect on the environment and human health if disposed of inappropriately. Observe any local regulations regarding the disposal of electrical consumer goods. Dispose of the appliance appropriately for recycling. Contact your local council for information on recycling facilities in your area.



# living & co.

## Warranty

We pride ourselves on producing a range of quality products that are both packed with features and completely reliable. We are so confident in our products, we back them up with a two years warranty. Now you too can relax knowing that you are covered.

Customer Helpline NZ: 0800 422 274  
This product is covered by two years warranty  
when accompanied by proof of purchase.