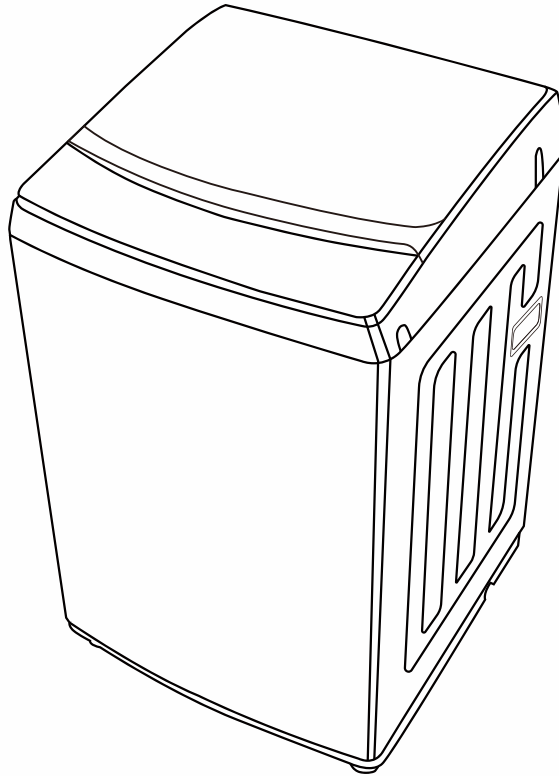


# living & co.

## Washing Machine (TOP LOAD)



## User Manual

MAE70-506TPS/01FM-AU-S1

MAE90-806TPS/01FM-AU

---

AFTER SALES SUPPORT

 (NZ) 0800 422 274

# TABLE OF CONTENTS

1. SAFETY INSTRUCTIONS	P. 3
2. INSTALLATION	P. 8
3. OPERATIONS	P. 12
4. MAINTENANCE	P. 18
5. Appendix 1: Program Details:	P. 22

# 1. SAFETY INSTRUCTIONS

## 1.1 SAFETY INSTRUCTIONS

For your safety, the information on this manual must be followed to minimize the risk of fire, explosion, electric shock, property damage, personal injury, or loss of life.

- This appliance is not intended for use by persons (including children) with reduced physical, sensory or mental capabilities lack of experience and knowledge, unless they have been given supervision or instruction concerning the use of the appliance by a person responsible for their safety.
- Children should be supervised to ensure that they do not play with the appliance.
- If the supply cord is damaged, it must be replaced by the manufacturer, a service agent, or similarly qualified persons.
- Please use the new hose-sets supplied with the appliance. Old hose-sets should not be reused.
- Appliance openings must not be obstructed by carpet or other blockages.
- This appliance is intended to be used in household and similar applications such as:
  - staff kitchen areas in shops, offices, and other working environments;
  - farm houses;
  - in hotels, motels, and other residential type environments;
  - bed and breakfast environments;
  - and in communal areas in flats or laundromats.

Model	Washing Capacity	Standard Water Pressure
MAE70-506TPS/01FM-AU-S1	7.0 kg	0.03MPa~0.8MPa
MAE90-806TPS/01FM-AU	9.0kg	0.03MPa~0.8MPa

## 1.2 Explanation of the symbols



### Warning!

This combination of symbol and signal word indicates a potentially dangerous situation which may result in death or serious injuries.



### Caution!

This combination of symbol and signal word indicates a potentially dangerous situation which may result in slight or minor injuries or damage to property and the environment.



### Note!

This combination of symbol and signal word indicates a potentially dangerous situation which may result in slight or minor injuries.



### Warning!

## 1.3 Risk of Shock!

- This appliance is for indoor use only.
- Do not place the washing machine in a humid location.
- Do not insert hands into a running spin-dry bin.
- If the spin-dry bin does not stop within 15 seconds of opening the cover, stop using the machine and seek repairs.

- Before performing any maintenance, unplug the appliance from the mains.
- Always unplug the appliance and turn off the water supply after use.
- To ensure your safety, insert the power plug into an earthed three-pole socket. Check carefully that your socket is properly and reliably earthed.
- Make sure that the water and electrical devices are connected by a qualified technician in accordance with the manufacturer's instructions and local safety regulations.

#### **1.4 Risk to Children!**

- Animals and children may climb into the appliance. Check the machine before each use.
- Young children should be supervised and kept from playing with the appliance.
- The appliance may become very hot during the operation. Keep children and pets far away from the machine during operation.
- Appliances with a single inlet valve can only be connected to cold water supply. Appliances with double inlet valves should be correctly connected both hot and cold water supplies.
- The plug must be accessible after installation.

#### **1.5 Risk of Explosion!**

- Do not wash or dry anything that has been cleaned in, washed in, soaked in, or dabbed with combustible or explosive substances (such as wax, oil, paint, gasoline, degreasers, dry-cleaning solvents, kerosene, etc.) This may result in fire or explosion.
- Make sure to thoroughly rinse anything washed by hand before drying.

 Caution

## 1.6 Product Installation

- This appliance is for indoor use only.
- Appliance openings must not be obstructed by carpet or other blockages.
- The appliance should not be installed in the bathroom, wet rooms, or rooms with explosive or caustic gases.
- Remove all packaging before using the appliance to avoid risk of serious damage.
- Connect the double inlet valves to the hot and cold water supply.
- The plug must be accessible after installation.

## 1.7 Risk of Appliance Damage!

- This appliance is for home use and textiles suitable for machine wash only.
- Do not climb up and sit on top of the appliance cover.
- Do not lean against the appliance door.
- Caution during appliance handling:
  1. Drain accumulated water out of the appliance.
  2. Handle the appliance with care. Never hold any protruded appliance part while lifting. Do not use the appliance door bin as a handle during transportation.
  3. Note that the appliance is heavy. Transport with care.
- Do not close the door with excessive force.
- Do not use the appliance to wash carpets.

## 1.8 Appliance Operation

- Before washing clothes for the first time, run the appliance for one complete cycle while it is empty.
- Do not place flammable, explosive, or toxic solvents in the appliance. Do not use gasoline, alcohol, etc. as detergents. Only select detergents suitable for top loader appliances.

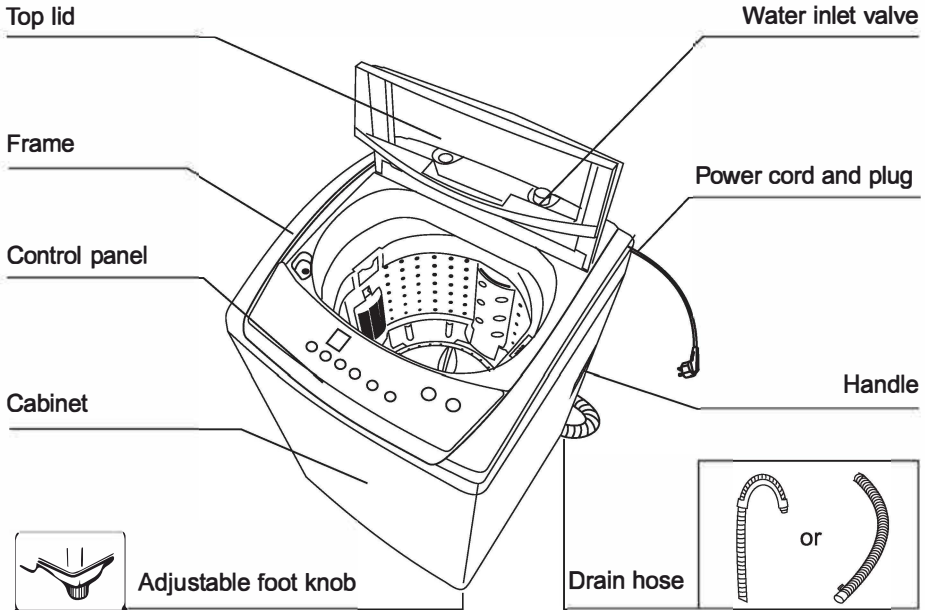
- Make sure that all pockets are emptied before washing. Sharp and rigid items such as coins, brooches, nails, screws, stones, etc. may cause serious damage to this appliance.
- Any damage or malfunction resulting from external objects are not covered by your warranty and may lead to expensive repairs.
- Be careful of burning yourself when the product drains hot washing water.
- Never refill water by hand during washing cycles.
- After a program is completed, wait two minutes before opening the door.

### **1.9 Packaging/Old Appliance**

This product should not be disposed of with other household waste. To prevent possible harm to the environment or human health from uncontrolled waste disposal, recycle this appliance responsibly to promote the sustainable reuse of material resources. Contact your local council for details on where you can dispose of the product.

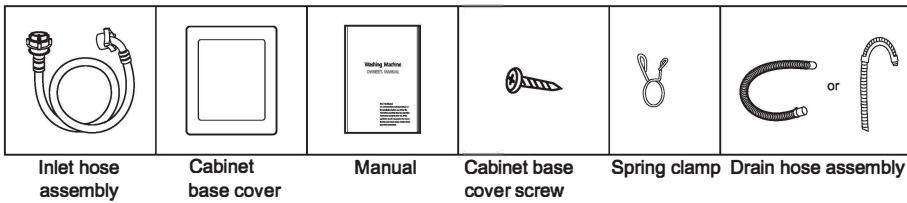
## 2. INSTALLATION

### 2.1 Product Description



**Note!** • Product image is for reference only, and may vary depending on actual product.

### 2.2 Accessories



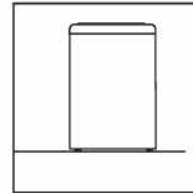
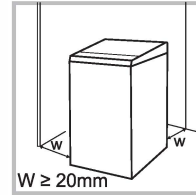
**Note!** • If the drain hose is already installed on the appliance, no spring clamp and drain hose accessories are provided.

## 2.3 Installation Area

- Warning!**
- Stability is important to prevent the product from moving!
  - Make sure that the appliance is not crushing the power cord.

Before installing the appliance, select a location that matches the following criteria:

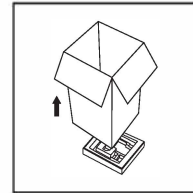
1. Has a rigid, dry, and level surface
2. Not exposed to direct sunlight
3. Has sufficient ventilation
4. Has a room temperature above 0°C
5. Far away from heat sources such as coal or gas.



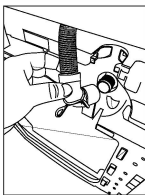
## 2.4 Unpacking the Appliance

- Warning!**
- Packaging material (e.g. films and styrofoam) can be dangerous for children.
  - Risk of suffocation! Keep all packaging away from children.

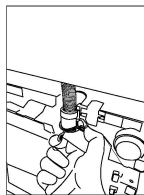
1. Remove the cardboard box and styrofoam packing.
2. Lift the appliance and remove its base packing.
3. Remove the tape securing the power supply cord and drain hose.
4. Remove the inlet hose from the drum.



## 2.5 Installing the Drain Hose



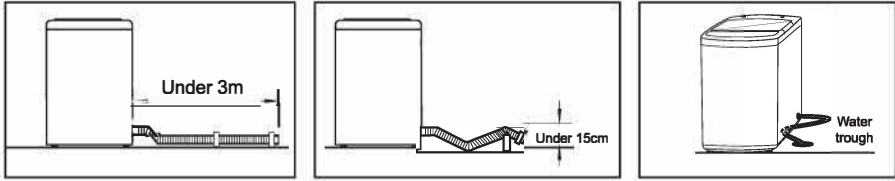
Drain hose inserted into the drain



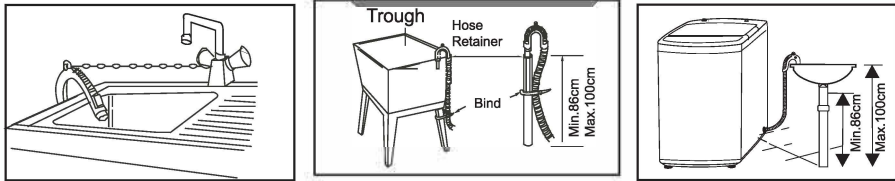
Clamping spring

- Warning!**
- Do not twist or over stretch the drain hose.
  - Position the drain hose securely to prevent water leakage.
  - If the drain hose is too long, do not force it under the washing machine as this will may cause damage and potential water leakage.

There are two ways to place the end of the drain hose: 1. Lower drain system



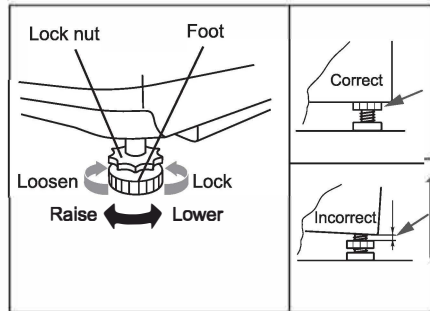
2. Upper drain system



## 2.6 Levelling the Appliance

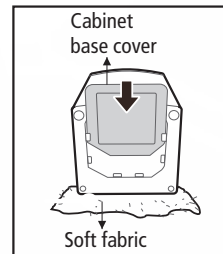
**Warning!** • The lock nuts on all four feet must be screwed tightly against the housing.

1. Check if the legs are closely attached the cabinet. If they are not, turn them to their original positions tighten the nuts.
2. Check the appliance's alignment with a level and if correct as required.
3. Loosen the lock nut and turn the feet until it is in close contact with the floor.
4. After the appliance is locked, press the four corners again to ensure they have been adjusted properly.



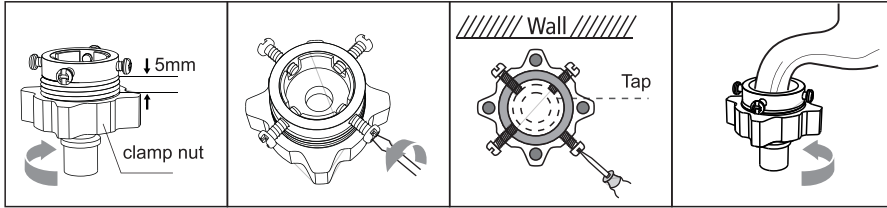
## 2.7 Installation of the cabinet base cover

Tilt the machine backwards (two people required), lay the machine on a soft surface to avoid damage. Insert the base cover into the panel slots, ensure fully inserted, then use the single screw to secure the cover in place.



## 2.8 Connecting the Inlet Hose, Tap, and Appliance

1. Connect the ordinary tap and inlet hose.

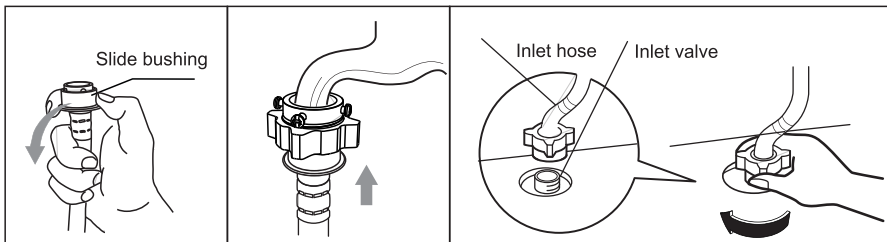


1. Loosen the clamp nut to a 5mm thread

2. Loosen the four bolts

3. Set the connecting base on the tap and tighten the bolts evenly

4. Tighten the clamp nut

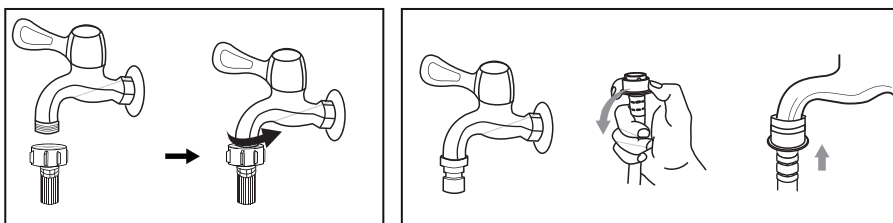


5. Press on the slide bushing and insert the inlet hose into the connecting base

6. Connection completed

7. Check if there is any water leakage after connection and installation.

2. Connect the screw tap and inlet hose.



Tap with threads and inlet hose

Special tap for appliance

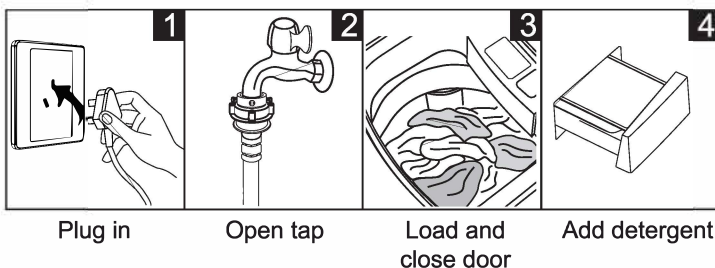
**Warning!**

- Follow the instructions in this chapter to prevent water leakage or damage!
- Do not twist, crush, modify, or submerge the inlet hose.

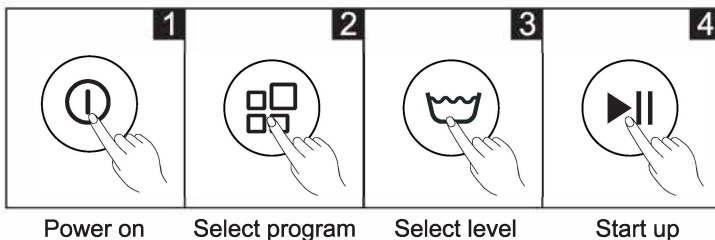
## 3. OPERATIONS

### 3.1 Preparation Before Washing

- Caution!**
- Make sure the appliance is installed properly before washing.
  - Before washing for the first time, run the appliance for one complete cycle while empty according to the instructions below.



### 3.2 Washing



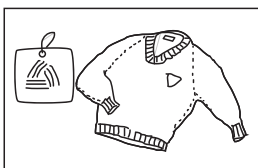
- The washing machine has **8 wash programs**, including 7 preset programs and a 'Smart Wash' program.
- **Smart Wash** automatically selects the water level, operation, and rinse times according to load weight. If Smart Wash is selected, steps 2 and 3 can be skipped.
- For a detailed description of the other **7 preset programs**, refer to Appendix 1.

### 3.3 Post-Wash

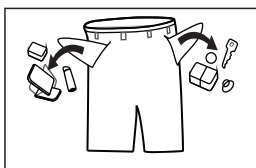
The buzzer will beep after washing is completed. The power supply will be cut off automatically. Next, unload the laundry.

### 3.4 Keep in Mind

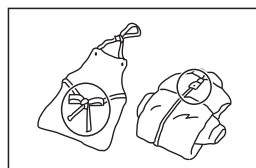
- The appliance's ambient temperature during operation should be (0-40)°C. If used under 0°C, the inlet valve and draining system may be damaged. If the appliance is placed under 0°C or lower conditions, it should be transferred to a normal ambient temperature to ensure the water supply and drain hose do not become frozen before use.
- Check clothes labels and detergent instructions before a wash. Use non-foaming or less-foaming detergents suitable for the appliance.



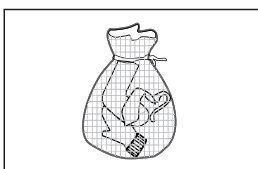
Check the label



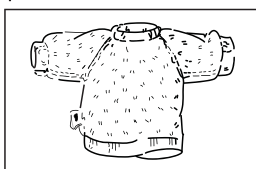
Take items out of the pockets



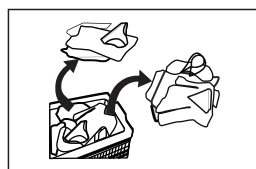
Knot long strips, zips, and buttons



Put small clothes into a pillow slip



Turn easy-pile and long-pile fabric inside out



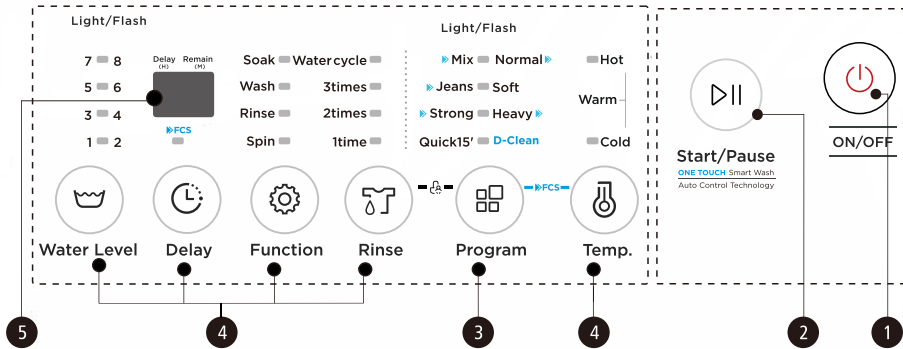
Separate clothes with different textures

- Warning!**
- Washing single items of clothing may easily cause imbalances or other abnormalities. It is recommended to add several items of clothing to be washed together to ensure draining is done smoothly.
  - Do not wash clothes that have been contaminated with kerosene, gasoline, alcohol, and other flammable materials.

### 3.5 Using Detergent and Washing Powder

- If the washing powder has caked together or has solidified, it is suggested to use some water to dilute the powder to prevent the detergent box inlet from being blocked and overflowing while filling water.
- Choose suitable detergents for the various washing temperatures to get the best washing performance with less water and energy consumption.

### 3.6 Control Panel



**Note!** The control panel image is for reference purposes only and may vary depending on actual product.

- |  |  |
|--|--|
| <p><b>1</b> On/Off</p> <p>Switch the appliance on or off.</p>  | <p><b>2</b> Start/Pause</p> <p>Press the button to start or pause the washing cycle.</p>                     |
| <p><b>3</b> Program</p> <p>Available according to laundry type.</p>  | <p><b>4</b> Option</p> <p>This allows you to choose an additional function and will light when selected.</p> |
| <p><b>5</b> Display</p> <p>The display shows the settings, estimated time remaining, options, and status messages of the appliance. The display will remain on through the cycle. A flashing LED indicates the delay time to start the machine. A steady LED indicates the remaining program time.</p> |  |

### 3.7 Option

Applies only to appliances with these functions.

- Water level**

Select a water level according to clothing categories, dirtiness, and personal preference
- Rinse**

Various rinse times can be selected
- Function**

Combinations of soaking, washing, rinsing, and spinning is available
- Temp.**

Press the button to select between hot, warm, and cold water for wash.



### Delay

1. Select a program
2. Press the Delay button to choose a time
3. Press [Start/Pause] to commence the delay operation



Before starting the program, press the [Delay] button until the desired delay time is reached – LED display will sequentially step through the delay time (1 – 24hours) on each push of the button. Alternatively you can press and hold the button to automatically step through the delay time, release when the desired delay time has been displayed. If the program has already started, press the [On/Off] button to reset the program.

**Caution!** If there is any interruption in the power supply while operating, the selected program is stored in memory and will resume when power is restored.



### FCS

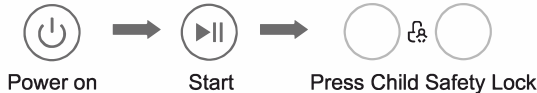


**Note!** For a detailed description of the **Fast Clean System (FCS)**, refer to the appendix.



### Child Safety Lock

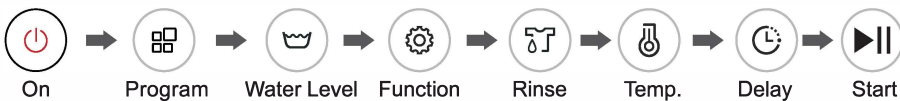
This feature prevents misuse by children.



- Caution!**
- Press and hold these two buttons together (for approximately 3 seconds) to engage the lock function. Repeat this process to unlock.
  - “Child Safety Lock” will lock all buttons except [On/Off].

## 3.8 Personalised Washing Program Settings

Users can select the washing program that best suits their needs and specify rinse times, water volume, and delay time



**Note!** As a general guide, we recommend water level 4 for small loads, 6 for medium loads, and 8 for large loads (drum full to capacity).

### 3.9 Washing Process Operations

Users can set a single process or combinations of washing, rinsing, and spinning processes according to their needs. Detailed operations for specific programs are as follows:

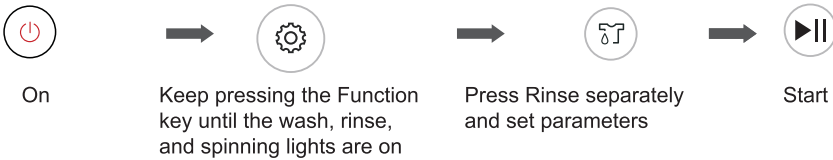
#### 3.9.1 One Touch Smart Wash



#### 3.9.2 Spin



#### 3.9.3 Wash + Rinse + Spin



**Note!** • Other processes can be combined according to the above example.

### 3.10 Washing Program Table

Steady | Flashing  
light | light  
XXXX □ XXXX  
XXXX □ XXXX  
XXXX □ XXXX  
XXXX □ XXXX



Program

Programs are available according to laundry type.  
Applies only to appliances with these functions.

Program	
Jeans:	Suitable for washing heavily stained/wearable clothes.
Quick 15':	Suitable for washing lightly stained and summer clothes.
Soft:	Soft tempo with slow wash and spinning speed for lightest wear and deformation.
Mix	Suitable for washing cotton, linen, flax, and jute clothes.
Normal (Standard)	Standard fabric washing program suitable for washing ramie cotton fabric. Washes once, rinses twice, extended spin time.
Strong	Longer wash time and stronger stream provides better washing results.
Heavy	Suitable for washing heavily stained/wearable clothes.
» FCS	Starting the Fast Clean System: Power on the appliance, select the "Normal", "Soft", "Mix", "Strong", or "Jeans" program, then press the FCS button. Next, press the "Start/Pause" button to start FCS. Relative figures will be shown after FCS starts up. Cancelling FCS: when selected, the function can be cancelled by pressing the FCS button or power off.
Fuzzy weighting:	The washing machine will select the water level automatically according to the load weight. <ol style="list-style-type: none"> <li>1. Fuzzy weighting is not available when water is in the tub;</li> <li>2. Fuzzy weighting is not available if the user selected a water level before pressing the [Start/Pause] button;</li> <li>3. The appliance will run fuzzy weighting after the press [Start/Pause] button is pressed. Consumers can also select a specific water level as needed.</li> </ol>

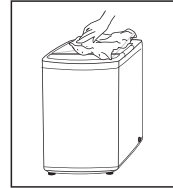
## 4. MAINTENANCE

### 4.1 Cleaning and Care

**Warning!** • Before maintaining the appliance, unplug the machine and close the tap.

### 4.2 Cleaning the Cabinet

Proper maintenance of the appliance can extend its lifecycle. The surface can be cleaned with diluted non-abrasive neutral detergents when necessary. If there is any water overflow, use a wet cloth to wipe it off immediately. Do not use any sharp items to clean the cabinet.



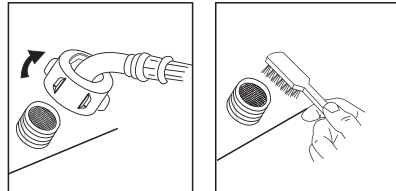
**Note!** • Do not use formic acid and its diluted solvents or equivalents such as alcohol, solvents, chemical products, etc.

### 4.3 Cleaning the Inlet Filter

**Note!** • The inlet filter must be cleaned if a decrease in water pressure is noticed.

Washing the filter in the washing machine:

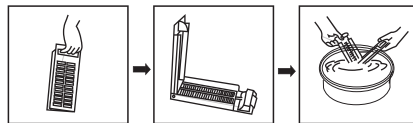
1. Screw off the inlet pipe from the backside of the machine.
2. Pull out the filter with long nose pliers and reinstall it after washing.
3. Clean the filter.
4. Reconnect the inlet pipe.



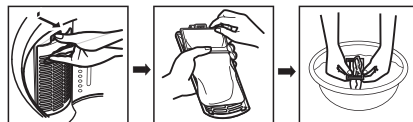
Cleaning the lint filter

1. The appliance includes a built-in lint filter. It can help collect lint during the wash cycle.
2. It is suggested to clean the lint filter every 10 cycles.
3. Take the filter out and clean it with water, then place the filter back into the washer.

Magic filter



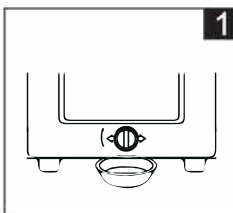
Normal filter



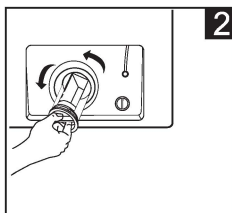
## 4.4 Cleaning the Drain Pump Filter

This section only applies to supported appliances.

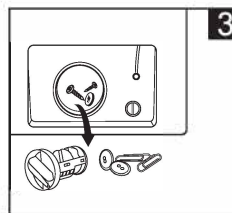
- Warning!**
- Take care of the hot water!
  - Allow the detergent solution to cool down.
  - Unplug the machine to avoid electrical shock before washing.
  - The drain pump filter can filter threads and small external objects during a wash.
  - Clean the filter periodically to ensure normal operation of the appliance.



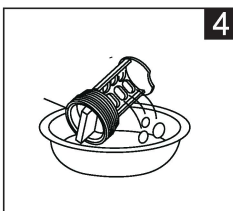
1  
Drain the pump, using a container underneath to collect water.



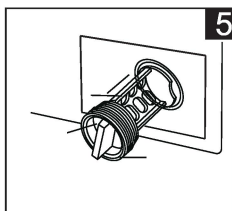
2  
Open the filter by turning it counter clockwise



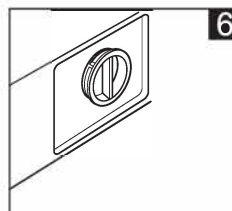
3  
Remove any extraneous matter.



4  
Clean the filter.



5  
Restore and adjust the convex place, align with the pump hole.



6  
Tighten the pump cover clockwise.

- Caution!**
- Ensure that the valve cap and emergency drain hose are reinstalled properly. Cap plates should be inserted aligning to hole plates to prevent water leakage.
  - Skip step 2 and 3 for appliances that don't have an emergency drain hose. Rotate the lower cover directly to make water run into basin.
  - There may be hot water in the pump while the appliance is in use, depending on the selected program. Never remove the pump cover during a wash cycle, always wait until the appliance has finished the cycle and is empty. When replacing the cover, ensure that it was securely re-tightened.

## 4.5 Troubleshooting

The appliance does not start or stops during operation.

Try to identify and solve the problem, contact the service centre if you are unable to.

Description	Inspection Items
No wash	Check if the power is off or the household circuit breaker has tripped, the washer will not work if the water amount does not reach the required level (i.e. If it is set to "Delay" washing mode).
No water flows in	Check if the power is off or the household circuit breaker has tripped, Check if the water supply is cut off or the water pressure is too low. Check if the inlet hose is not properly connected and the water tap is opened. Check if the filtering screen of the inlet valve is blocked by dirt. Check if the "Start/Pause" button was pressed after the power switch was pressed.
Abnormal draining	Check if the water drain hose is placed too high. Check if the end of water drain hose is blocked. Check if the internal rubber ring of drain valve is blocked by dirt.
Abnormal spin	Check if the door lid is closed. Check if the clothing is at one side of the barrel or there is too much clothing was placed inside. Ensure the machine is placed on a stable, flat surface. Check if the motor belt is loosened.

Description	Reason	Solution
E1	Abnormal water intake alert.	Check if the water tap is open.
E2	Unfinished water drain alert.	Check the water level sensor and drain pump.
E3	Lid not closed before wash and spin alert.	Close the lid and press the "Start" button.
E4	Single-side wash alert.	Manually balance clothes in the barrel by hand.
EXX	Other	Try running the appliance again and call the service line if issues persist.

**Note!** • After checking, restart the appliance. If the problem persists or the display shows other alert codes, contact customer service.

## 4.6 Technical Information

Standard Water Pressure	0.03MPa~0.8MPa				
Model	Washing Capacity	Dimensions (W*D*Hmm)	Net Weight	Rated Power	Power Supply
MAE70-506TPS/01FM-AU-S1	7.0kg	550x570x940	38kg	550W	220-240V~,50Hz
MAE90-806TPS/01FM-AU	9.0kg	580x596x962	42kg	650W	220-240V~,50Hz

## 4.7 Energy Efficiency Tests by Program:

MAE70-506TPS/01FM-AU-S1

During "Normal" Washing program, water level is 8 level, wash Temp. is warm.

MAE90-806TPS/01FM-AU

During "Normal" Washing program,water level is 8 level,wash Temp. is warm.

## 5. Appendix 1: Program Details:

The MAE70-506TPS/01FM-AU-S1 has 7 preset wash programs, specified below:

PROGRAM	DEFAULT WATER LEVEL	SYMBOLISED BY				SOAK FUNCTION	OPERATION TIME	RINSE TIMES	WATER TEMPERATURE
		STEADY LIGHT	STEADY LIGHT	FLASHING LIGHT	FLASHING LIGHT				
MIX	Auto-selected by load weight	Mix	X	Quick15	X	X	55 minutes	2	Cold
JEANS	Auto-selected by load weight	Jeans	X	Quick15	X	X	57 minutes	2	Cold
STRONG	Auto-selected by load weight	X	X	Strong	Quick15	Soak	77 minutes	2	Cold
HEAVY	Auto-selected by load weight	Strong	X	Quick15	X	Soak	92 minutes	3	Cold
QUICK15	Auto-selected by load weight	Quick	X	X	X	X	15 minutes	1	Cold
NORMAL	Auto-selected by load weight	X	X	Mix	X	X	55 minutes	2	Cold
SOFT	4	X	X	Jeans	X	X	50 minutes	2	Cold

The MAE90-806TPS/01FM-AU has 7 preset wash programs, specified below:

PROGRAM	DEFAULT WATER LEVEL	SYMBOLISED BY				SOAK FUNCTION	OPERATION TIME	RINSE TIMES	WATER TEMPERATURE
		STEADY LIGHT	STEADY LIGHT	FLASHING LIGHT	FLASHING LIGHT				
MIX	Auto-selected by load weight	Mix	X	Quick15	X	X	58 minutes	2	Cold
JEANS	Auto-selected by load weight	X	X	Jeans	Quick15	X	63 minutes	2	Cold
STRONG	Auto-selected by load weight	X	X	Strong	Quick15	Soak	83 minutes	2	Cold
HEAVY	Auto-selected by load weight	Strong	X	Quick15	X	Soak	120 minutes	3	Cold
QUICK15	Auto-selected by load weight	Quick	X	X	X	X	15 minutes	1	Cold
NORMAL	Auto-selected by load weight	Jeans	X	Quick15	X	X	61 minutes	2	Cold
SOFT	4	X	X	Mix	X	X	56 minutes	2	Cold

**Water levels are displayed as follows:**

WATER LEVEL	LIGHT STEADY/FLASHING
1	STEADY
2	FLASHING
3	STEADY
4	FLASHING
5	STEADY
6	FLASHING
7	STEADY
8	FLASHING

### **5.1 FAST CLEAN SYSTEM (FCS)**

The **Fast Clean System (FCS)** shortens operation time and is available in **MIX, JEANS, STRONG, HEAVY, or NORMAL** modes. FCS increases the intensity of the wash agitation to achieve similar results in reduced times.

#### **To use FCS:**

1. Press the On/Off button
2. Select the **MIX, JEANS, STRONG, HEAVY, or NORMAL** program.
3. Start **FCS** by pressing the **FCS buttons together**
4. Press the Start button

## 5.2 WATER CYCLE

**WATER CYCLE** shortens rinse times. To use water cycle first ensure that **Water cycle light is lit then select** rinse time 1, 2 or 3.

## 5.3 D-Clean FUNCTION

D-Clean: D-Clean allows the appliance to automatically clean its inner and outer washing drum. This function is periodically activated by stopping the drain process at just below half water level. The drum will spin while the agitator rotates, allowing water to be forced between the inner/outer drums, cleaning the inner surfaces and maintaining appliance efficiency.



# living & co.®

## Warranty

We pride ourselves on producing a range of quality products that are both packed with features and completely reliable. We are so confident in our products, we back them up with a two years warranty.

Now you too can relax knowing that you are covered.

Customer Helpline NZ: 0800 422 274

This product is covered by two years warranty when accompanied by proof of purchase.

---

AFTER SALES SUPPORT

  0800 422 274