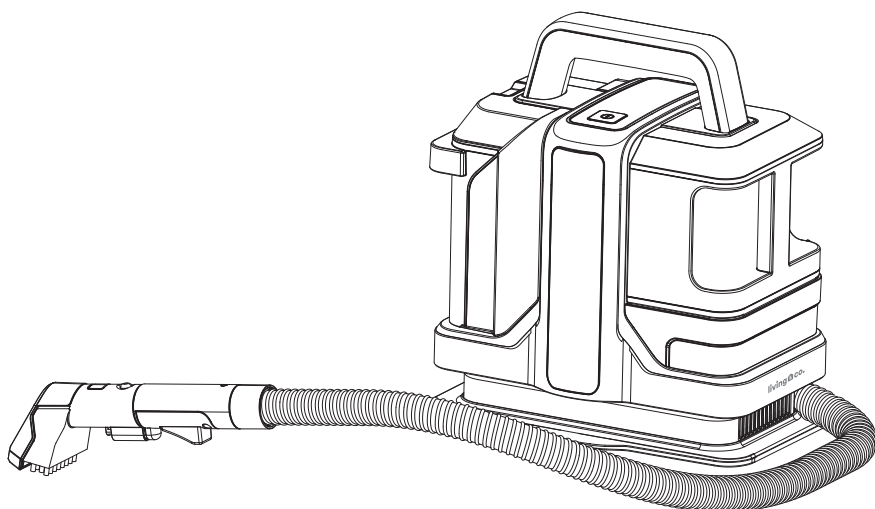


living & co.

Spot Cleaner



INSTRUCTION MANUAL

Model: W05

AFTER SALES SUPPORT

  0800 422 274

CONTENTS

	Page
IMPORTANT SAFETY INSTRUCTIONS	2-4
PRODUCT OVERVIEW	5
PREPARATION BEFORE USE	6
HOW TO USE	7
CLEANING AND MAINTENANCE	8-9
TROUBLESHOOTING	10

IMPORTANT SAFETY INSTRUCTIONS

Please read this instruction manual carefully before first use, even if you are familiar with this type of product. It is advisable to keep this instruction manual for future reference. The safety precautions herein reduce the risk of fire, electric shock and injury when correctly adhered to. Make sure you understand **all** instructions and warnings. Keep the manual in a safe place for future reference. If you sell or transfer ownership of this product, pass on these instructions to the new owner. Always follow basic safety precautions and accident prevention measures when using an electrical appliance, including the following:

- Only use water under 40°C, temperatures above this can affect the performance and result in damage to the product.
- Do not use the spot cleaner to clean arts and crafts, fibers and items not suitable for cleaning by water or surfaces that could potentially be damaged (such as laminated flooring, tables etc).
- This appliance is not intended to be used as a vacuum cleaner. Do not use it to suck up dirt and debris. Always vacuum the carpet or area to be cleaned first **before** using the appliance.
- Keep the product on a level surface and do not tilt to avoid water in the tanks leaking.
- Stop the machine and empty the dirty water tank if it reaches the full line or shuts off automatically.
- Make sure the detergent used is suitable for your materials to be cleaned. Apply a small amount on a test surface before using in the machine.
- The machine may stop when cleaning long hair carpet due to blocked air outlet. Stop the machine if a large quantity of foam or dirty water comes out and empty the dirty water tank before using again.
- Do not use foaming detergent.
- Do not use liquid like pesticides, hair dyes and lubricants.
- Do not use to pick up any flammable or combustible objects or cigarettes.
- Do not use to pick up any oil or hot air, or dry dust.
- DO NOT vacuum plaster, cement etc. as the unit will become blocked.
- Do not use this machine if the hose is broken, avoid bending, crushing, and pulling violently on the hose.

IMPORTANT SAFETY INSTRUCTIONS

- Do not block the air outlet and operate for a continuous period as this may result in reduced airflow and overheating.
- DO NOT use the cleaner if the appliance malfunctions, has abnormal noise, smell, or smoke, is dropped or damaged in any manner or if any breakage is found during the operation.
- DO NOT use the appliance if it is blocked. Turn off and clear all blockages before continuing.
- DO NOT misuse the cord. Never pull the appliance by the cord or pull to disconnect it from the outlet. Instead, grasp the plug and pull to disconnect.
- Do not disassemble, attempt repair by yourself, servicing must be strictly performed by qualified service personnel.
- Do not immerse in water or liquid to avoid fire or electric shock hazard.
- Do not use without the dirty water tank in position.
- DO NOT handle the plug or cleaner with wet hands.
- DO NOT put any objects into openings.
- DO NOT use with any openings blocked and do not restrict airflow.
- The product is intended for indoor use only.
- Stop the cleaner and empty the dirty water tank when the water reaches the max line. Empty the dirty water tank after each use.
- This appliance is not intended for use by persons (including children) with reduced physical, sensory or mental capabilities, or lack of experience and knowledge unless they have been given supervision or instruction concerning the use of the appliance by a person responsible for their safety.
- If the supply cord is damaged, it must be replaced by the manufacturer, its service agent or similarly qualified persons in order to avoid a hazard.
- Children should be supervised to ensure that they do not play with the appliance.
- To protect against the risk of electric shock, do not immerse the appliance, cord or plug in water or other liquids.
- Switch off immediately if any foreign objects are inadvertently suctioned up. Remove from the hose or tank before further use.

IMPORTANT SAFETY INSTRUCTIONS

Floor Surfaces and Upholstery

This product can be used for cleaning carpets and mats, rugs, fabric coverings etc. It is strongly advised to always test a section of the flooring material in an out-of-sight area first to ensure the surface to be cleaned is not damaged by the warm water, cleaning solution used or by the agitation of the cleaning brush.

Always follow the instructions provided with the cleaning solution. If unsure, **DO NOT USE!**

IMPORTANT: DO NOT USE on unsealed hardwood or unglazed ceramic surfaces, etc. Surfaces that are not properly sealed may be warped or damaged by exposure to heat, moisture and cleaning solutions.

CLEANING STUBBORN STAINS

Where water is inadequate to remove some marks or stains, a carpet or upholstery cleaner solution may assist.

Carpet and Upholstery Cleaning Solution

IMPORTANT: Only use a **Low Foaming** carpet or upholstery cleaning solution.

Always follow the instructions on the Cleaning Solution Bottle.

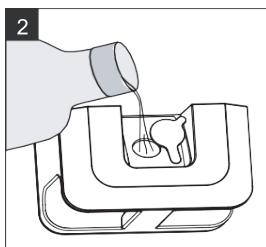
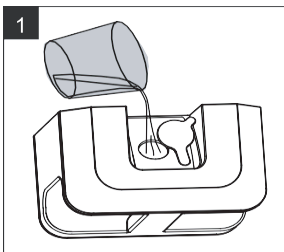
DO NOT add any other agents into the water tank such as rust removers, odour counter-reacting agents, alcohol, solvents, etc. as this will damage the appliance and may damage the carpet.

Adding other detergents or carpet cleaners that are not Low Foaming, may damage the appliance and will make using the appliance impossible due to the foaming suds.

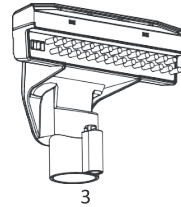
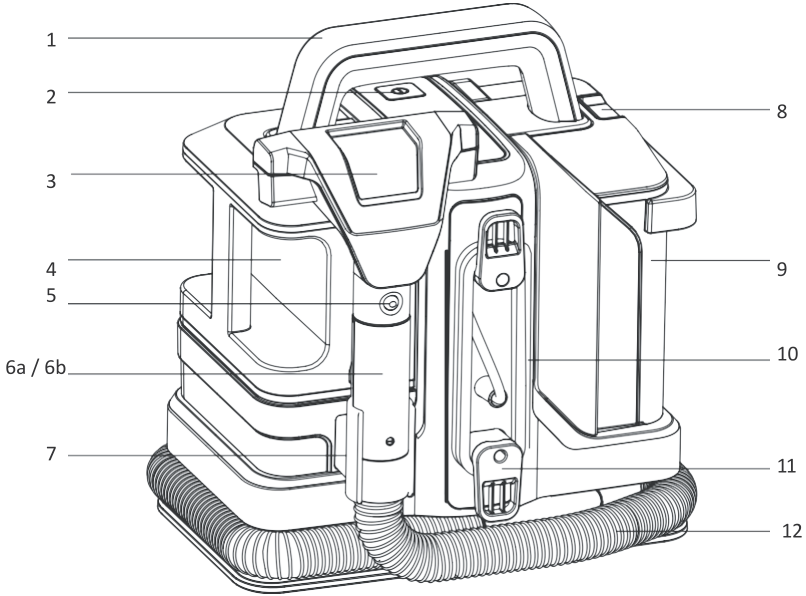
The Clean Water Tank will hold approximately 1L (1080ml) of clean water when filled to the "Max" fill line. Ensure water temperature does not exceed 40degrees Celsius.

Important: Check the recommended mixing ratio found in the instructions supplied with the cleaning solution. **Do Not** add more cleaning solution than that specified.

Pour clean water into the tank [1], then add the solution [2] to the clean water tank.

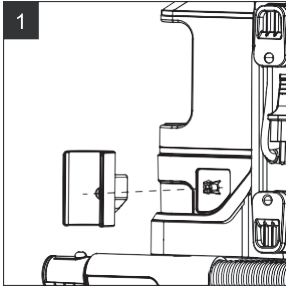


PRODUCT OVERVIEW

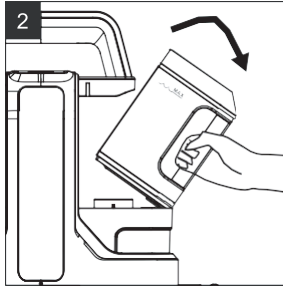


1	Carry Handle	7	Holder bracket for Hose handle
2	On/Off switch	8	Release button for dirty water tank
3	Larger cleaning brush head	9	Dirty water tank
4	Clean water tank	10	Power cord
5	Release button for brush attachment	11	Support hangers for supply cord
6a	Hose handle	12	Suction hose
6b	Water spray button (opposite side)	13	Smaller cleaning brush head

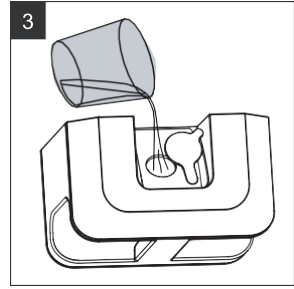
PREPARATION BEFORE USE



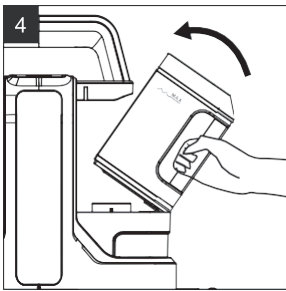
1
Unclip the hose holder bracket from the handle, fit it onto the machine as shown, using the screw provided to secure tightly.



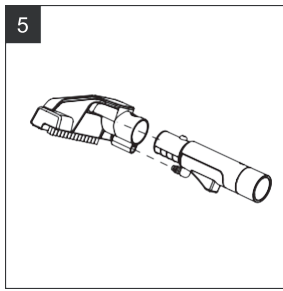
2
Take out the clean water tank. **Note:** Remove the clean water tank by pulling out at an angle of 30 degrees as shown.



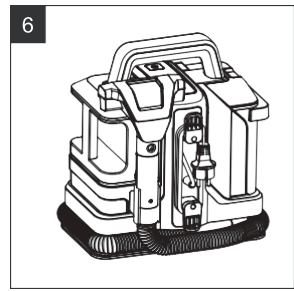
3
Lift off the fill cover, fill the tank with fresh water and refit the cover by press fitting it back to secure. **Note:** Refer Important safety instructions, specific to filling, earlier in this manual.



4
Refit the clean water tank. Note: clip the outer bottom part to the machine first holding the tank at 30 degrees, then lower the front part into the machine as shown in the diagram. Make sure the tank clicks to lock in position.

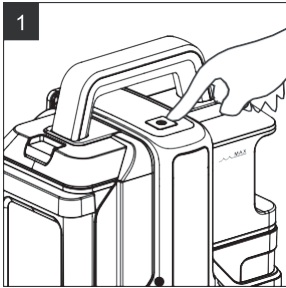


5
Fit your desired brush head (large or small) to the Hose handle. Ensure this is fully fitted, clicking to lock into position.

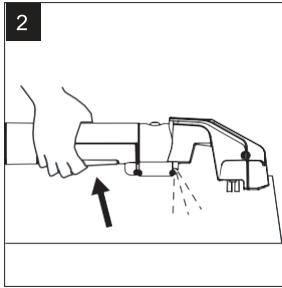


6
Wrap the hose around the base and clip the Hose handle onto the hose holder bracket.

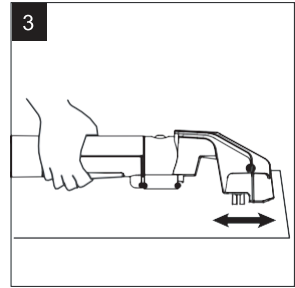
HOW TO USE



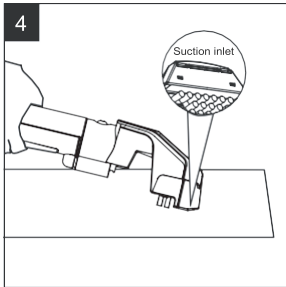
1 Plug the power cord plug into a suitable outlet socket and press the ON/OFF switch.



2 Press the water spray button on the hose handle, to spray water onto the cleaning surface.



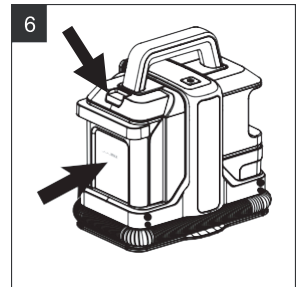
3 Brush the unit back and forth to massage the water / cleaning solution over the area to be cleaned.



4 Angle the brush head slightly forward, press the brush into the cleaning area to suction up the dirty water.



5 Power it off after cleaning. Wrap the hose around the base and clip onto the holder bracket.
Note: clean the dirty water tank after every use to avoid unpleasant smells.

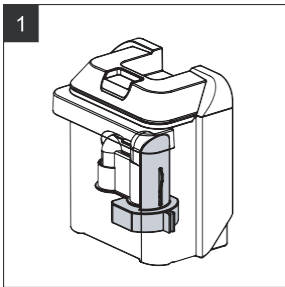


6 For removal and emptying of the dirty water tank, press the release button on the top and slide the tank outwards. To refit, simply slide back in until it clicks to lock into position.

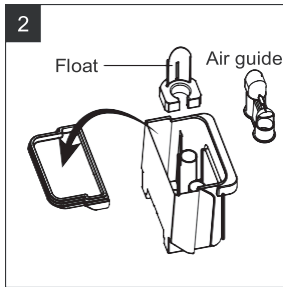
CLEANING AND MAINTENANCE

- To prolong the life of your cleaner and prevent blockages or problems occurring ensure this appliance is cleaned regularly.
- Always carry out cleaning when the product has been switched off, allowed to cool for a while and has the plug disconnected from the mains supply.
- This appliance can be cleaned with a damp soft cloth to keep the outside free of dirt and dust. Use a dry cloth to clean the power cord.
- To avoid unpleasant damp smells, clean both tanks and ensure they are fully air dried before storing and after every use.

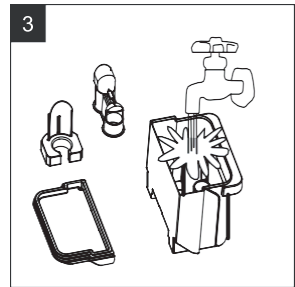
Clean the dirty water tank after every use to avoid unpleasant smells:



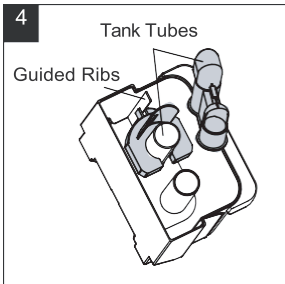
Empty the dirty water tank before it reaches the full mark. The float inside will operate to stop the suction if max capacity is reached.



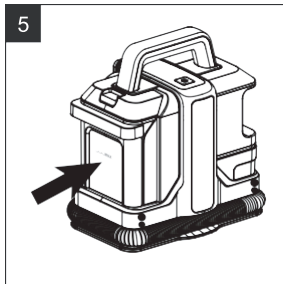
Take out the dirty water tank, pull the lid upwards to remove, then take out the Air guide and float.



Clean all parts in water to remove grit and rinse.



Clean the tank tubes and Guided ribs. Insert the clean Float along the guided ribs, then insert the Air guide into the high part of the tube.



Refit the tank lid and Install the dirty water tank back into the machine.

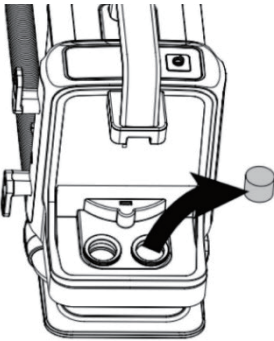
CLEANING AND MAINTENANCE

CLEANING THE SUCTION INLET FILTER

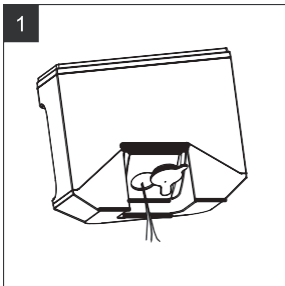
There is a small cylindrical foam filter located in the suction inlet – accessible after the dirty water tank is removed. The filter prevents foreign objects from being drawn into the motor. Periodically check that this filter remains clean and clear. After several uses, hair or dirt may get trapped within it. Failure to keep clean will reduce the performance of the suction.

After several uses, remove the foam filter by grasping with your thumb and index finger and pull out. Rinse the filter under the tap, squeezing to remove dirt, rinse clean. Ensure this is **fully dry** before replacing and using in the appliance.

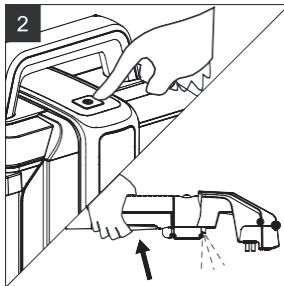
Ensure the filter is re-fitted in the correct hole (right hand side as shown below):



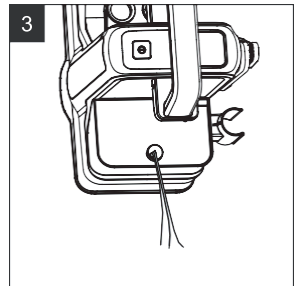
After use and before storage, drain remaining clean water from the machine:



Pour water out from the tank.



Install the empty water tank and press the water spray button to release the remaining water in the pipes.



After removing the mains supply plug, tilt the machine to remove residual water in the inlet pipe.

TROUBLESHOOTING

In case of fault and before contacting customer service, please check the following suggestions:

Fault	Possible Reasons	Solution
Not working after connecting power and switching on	<ul style="list-style-type: none">● The plug is not inserted into the socket outlet fully or the outlet is not switched on.● The supply circuit is off.	Ensure plug is inserted correctly and the outlet is on. Try and alternative socket outlet which has been confirmed as working.
No water comes out or little water comes out after pressing the water-spray button	<ul style="list-style-type: none">● Clean water tank is empty.● Spray water outlet is blocked.● The handle or the pump has been damaged	Check the clean water tank is full, remove the brush head and inspect the water outlet for blockage, clear the outlet. If no fault can be detected, contact customer service.
No suction or weak suction power	<ul style="list-style-type: none">● The machine is not plugged in correctly.● The dirty water tank is full.● The hose is damaged.● The suction inlet, foam filter is blocked or dirty.	Ensure power is connected. Clean the dirty water tank. Check the hose to make sure it is connected correctly and that there is no obvious damage. Clean the foam filter as detailed earlier in this manual.



living & co.

Warranty

We pride ourselves on producing a range of quality home appliances that are both packed with features and completely reliable. We are so confident in our products, we back them up with 1 year warranty.

Now you too can relax knowing that you are covered.

Customer Helpline NZ: 0800 422 274

This Product is covered by 1 year warranty when accompanied by proof of purchase