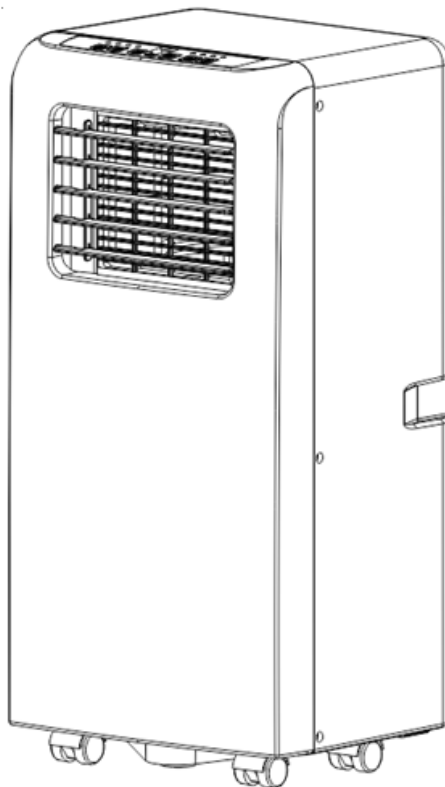


Kensington.

Portable Air Conditioning Unit (Cooling and Heating)



Instruction Manual

9000BTU 2.6kW Cool 2.4kW Heat

AFTER SALES SUPPORT

☎ NZ 0800 422 274

Contents

	Page
Important Safety Instructions	2-4
Product Overview	5
Getting Started	6-7
Operating Instructions	8-12
Cleaning and maintenance	12-13
Other useful information	14-17
Warranty	18

Important Safety Instructions

READ CAREFULLY AND KEEP FOR FUTURE REFERENCE

Read this manual thoroughly before first use, even if you are familiar with this type of product. The safety precautions enclosed herein reduce the risk of fire, electric shock and injury when correctly adhered to. Make sure you understand all instructions and warnings. **Keep the manual in a safe place for future reference**, along with any warranty information, your purchase receipt and the original packaging carton. If you sell or transfer ownership of this product, pass on these instructions to the new owner. **Always follow basic safety precautions and accident prevention measures when using an electrical appliance, including the following:**

Electrical safety and cord handling

- **Voltage:** Make sure your outlet voltage and circuit frequency correspond to the voltage stated on the rating label. If this is not the case, do not use the appliance.
- **Water:** To protect against fire and electric shock, do not immerse the cord, plug or the appliance itself in water or other liquids, or expose the electrical connections to water. Ensure your hands are dry before handling the plug or switching on the appliance. Do not use the appliance outdoors or on wet surfaces. Protect it from liquid spills.
- **No adaptor, no extension cord:** Do not use the heater with a power board or double adaptor as this may overheat and create a fire risk. Do not use it with an extension cord because the cord may overheat and cause a risk of fire.
- **Damage:** Check the power cord regularly for visible damage. If the cord is damaged, it must be replaced by the manufacturer, its authorised service centres or appropriately qualified personnel in order to avoid any hazards.
WARNING! Do not pick up or operate the appliance if the power supply cord, plug or housing is damaged, or after it malfunctions or has been dropped or damaged in any manner.
- **Protect the power cord:**
 - * Do not operate the appliance with the cord coiled up; always fully unwind.
 - * Do not twist or kink the cord or let it touch heated surfaces.
 - * Do not put any stress on the cord where it connects to the product.
 - * Never carry the appliance by the cord.
 - * Arrange the cord away from any traffic area so no one will trip over it.
 - * Do not run the cord under carpeting or cover it with rugs or runners.
- **Connection:** To insert the plug, grasp it firmly and guide it into outlet.
- **Disconnection:** Switch off and unplug the appliance from the power outlet when it is not in use, during lightning storms and before cleaning, servicing, moving or storing the appliance. Grasp the plug and remove it from the outlet, do not pull the cord when disconnecting.

Important Safety Instructions (Cont.)

- **RCD:** Unless your home is already fitted with a residual current device (safety switch), we recommend installing an RCD with a rated residual operating current not exceeding 30mA to provide additional safety protection when using electrical appliances. See your electrician for professional advice.

Usage conditions and restrictions

- **Domestic use only:** This appliance is intended for indoor household use only. It is not suitable for commercial, industrial, trade or outdoor use. Do not use it for anything other than its intended purpose, and only use it as described in this manual. Any other use may cause fire, electric shock or injury.
- **No clothes drying:** Do not use this appliance as a drying rack for clothing.
- **Attachments:** The use of accessories not intended for use with this appliance may cause injuries to the user or damage to the appliance.
- **Liability:** We assume no liability for any damages or personal injury caused by misuse of the product and/or failure to follow these instructions.
- **Usage restriction:** This appliance is not intended for use by children and persons with reduced physical, sensory or mental capabilities, or lack of experience and knowledge, unless they have been given supervision or instruction concerning use of the appliance by a person responsible for their safety.
- **Children:** This appliance is not a toy. Supervise children to ensure they do not play with it. Close supervision is necessary when any appliance is used by or near children.
- **WARNING! Do not leave unattended during use!** Always switch it off and unplug when not in use, if left unattended and before cleaning and storing.
- **Location:** Place the appliance on a dry, flat, stable surface to avoid overturning.
- **Keep clear:** Ensure nothing is blocking the airflow outlet, air intake grilles or ventilation openings.
- **WARNING! DO NOT use the appliance in the following areas:**
 - * Near an open flame, a hot burner, oven or other source of high heat.
 - * On a soft surface (such as carpet) or where it may tip over during use.
 - * Outdoors or in areas of high humidity.
 - * In a bathroom, laundry area, near a sink, washer, pool or any source of water.
 - * Near curtains or in tight corners, to enjoy maximum airflow.
 - * In areas where paint, petrol, etc. is stored and there is a risk of explosion or fire from flammable gases, or in areas where substances are being sprayed.
- **CAUTION! Personal safety:** Avoid contact with moving parts. Never insert fingers, pencils or any other objects through the grilles when the appliance is running, as this may cause electric shock and/or a fire hazard. Keep hair and loose clothing well away from the appliance when it is in use.

Important Safety Instructions (Cont.)

Children : Supervise children to ensure they do not play with the appliance when in heating mode. Close supervision is necessary when any appliance is used by or near children.

Unattended: Do not leave the appliance unattended while it is in use.

CAUTION: Hot! Accessible parts of this appliance (when in heating mode) can become very hot when in use. To avoid burns, do not let bare skin touch hot surfaces. Be particularly careful when children and vulnerable persons are present. Always let the appliance cool down before touching it, even if it is unplugged from the power supply.

To ensure personal safety, do NOT operate this appliance:

In front of or immediately below a power point.

Close to a radiant heat source.

Behind a door.

Service: This appliance contains no user-serviceable parts inside. Do not attempt to open and repair the appliance yourself. Other components should only be serviced by a qualified technician. All covers are intended to prevent direct access to the heating elements and must be in place when the appliance: is in use.

Malfunction: In case of malfunction, disconnect the plug immediately and contact our after sales support line for advice.

Storage: To avoid damaging the appliance during storage or transport, keep the heater in a dry place, free from excessive vibration.

Improper use: Improper use or installation may result in the risk of fire, electric shock and/or injury. There will be no liability for any eventual damages caused by improper use or incorrect handling.

WARNING: Do not use this appliance (in heating mode) in small rooms when they are occupied by persons not capable of leaving the room on their own, unless constant supervision is provided.



**This unit uses a flammable refrigerant.
If refrigerant leaks and comes in contact with fire or heating part,
it will create harmful gas and there is risk of fire.**

Releasing refrigerant into atmosphere is strictly forbidden!

Product Overview

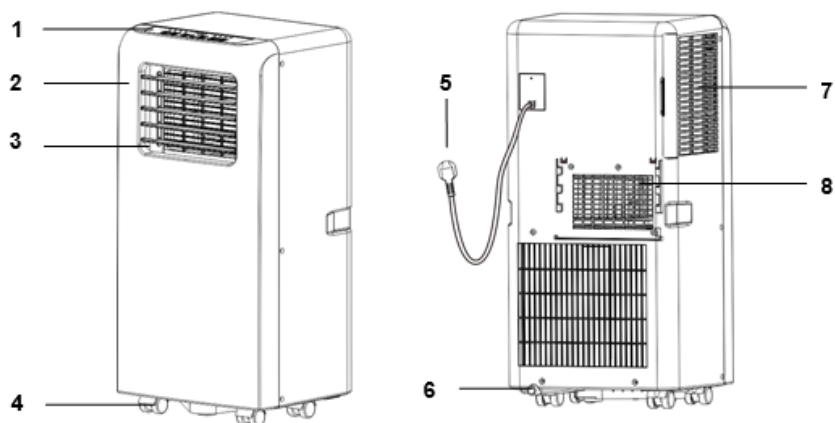











Fig.1

1	Control panel	5	Power cord
2	Front panel	6	Drainage outlet
3	Louvres	7	Air inlet
4	Castor wheels	8	Air outlet

Accessories

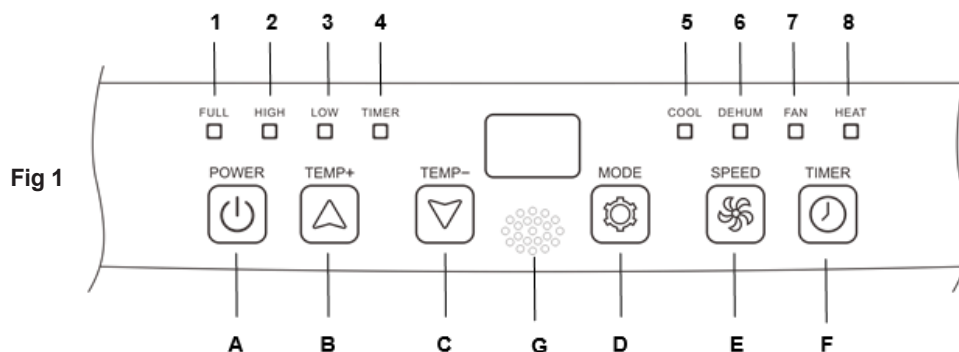
Part	Description	Quantity
	Exhaust hose	1
	Window Connector	1
	Housing adaptor	1
	Remote Controller	1
	Window Kit	1
	Dowel	2
	Air outlet	1
	Water pipe	1
	Batteries for remote controller	2

Getting Started

Before first use

- **Unpacking:** This product has been packaged to protect it against transportation damage. Unpack the appliance and keep the original packaging carton and materials in a safe place. It will help prevent any damage if the product needs to be transported in the future, and you can use it to store the appliance when it is not in use. In the event it is to be disposed of, please recycle all packaging materials where possible.
- **Safe packaging disposal:** Plastic wrapping can be a suffocation hazard for babies and young children, so ensure all packaging materials are out of their reach and disposed of safely.
- **Inspection:** Unwind the cord to its full length and inspect it for damage. Do not use the appliance if the appliance or its cord have been damaged or are not working properly. In case of damage, contact our after sales support centre for advice on examination, repair or return of the damaged product.

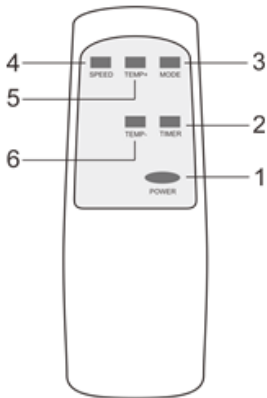
Control panel



A	Power on/off	1	Water full
B	Temperature up	2	High fan speed
C	Temperature down	3	Low fan speed
D	Operation MODE	4	Timer on/off
E	Fan speed	5	Cooling
F	Timer on/off	6	Dehumidifying
G	Remote signal receiver	7	Fan
		8	Heating

Getting Started

Remote controller



1	Power on/off
2	Timer on/off
3	Operation MODE
4	Fan speed
5	Temperature up
6	Temperature down

Notes:

- Do not drop the remote control.
- Do not place the remote control in a location exposed to direct sunlight.

Setup - Using the appliance

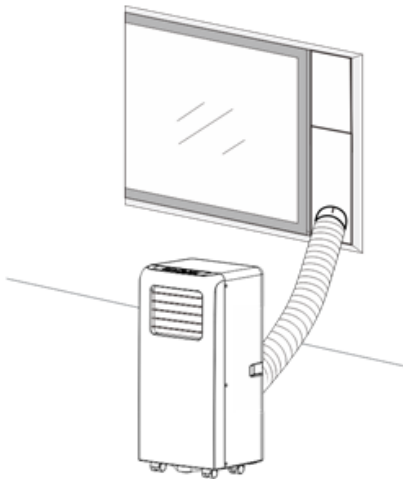


Fig.2

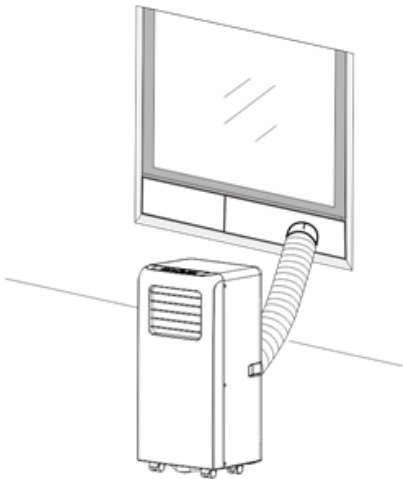


Fig.2a

Operating Instructions

Setup - Using the appliance

- Decide on a location for the appliance, convenient to a supply socket. It is designed for floor use. Place on a dry, level surface.
- Insert the power plug into an appropriate electrical outlet and switch on power to the outlet.
- As shown in Fig 2 or Fig 2a on the previous page, install the exhaust hose and fit the appropriate window fitting.

Switching the appliance on/off

- Press the ON or OFF button on the control panel (or the remote control) once to switch the unit on.

Cooling operation

- Press the mode button until the cooling icon appears.
- Press the Temp - or Temp + buttons "▲" "▼" to select the desired room temperature as displayed on the LCD screen (16 - 31degC).
- Press the "Fan speed" button to select desired airflow.

Dehumidifying operation

- Press the mode button until the Dehumidify icon appears.
- The set temperature will automatically adjust to current room temperature minus 2°C.
- The fan speed will automatically be set to low airflow.

Fan operation

- Press the "Mode" button until the "Fan" icon appears.
- Press the "Fan Speed" button to select wind speed.

Heating operation

- Press the mode button until the Heating icon appears.
- Press the Temp - or Temp + buttons "▲" "▼" to select the desired room temperature as displayed on the LCD screen (16 - 31degC).
- Press the "Fan speed" button to select desired airflow.

Timer operation (ON setting)

- When the air-conditioner is OFF, press the "Timer" button and select a desired ON time through the temperature and time setting buttons.
- "Preset ON Time" is displayed on the operation panel.
- ON time can be regulated at any time in 0-24 hours.
- Press the "Timer" button again to confirm, Timer indicator turns on.
- To deactivate the timer function, press "Timer" button until timer indicator turns off.

Operating Instructions

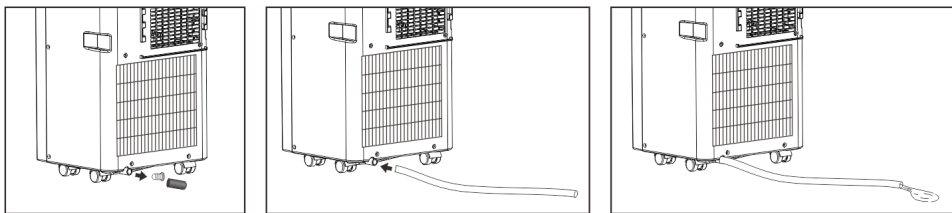
Setup - Using the appliance (continued)

Timer operation (OFF setting)

- When the air-conditioner ON, press "Timer" button and select a desired OFF time through the temperature and time setting buttons.
- "Preset OFF Time" is displayed on the operation panel.
- OFF time can be regulated at any time in 0-24 hours.
- Press the "Timer " button again to confirm, Timer indicator turns on.
- To deactivate the timer function, press "Timer " button until timer indicator turns off.

Water Drainage

- **Water Full Alarm Function**
- The inner water tray in the air-conditioner has a water level safety switch, it controls the water level. When water level reaches its limit, the water full indicator lights up. When the water is full, please remove the rubber blocker plug from the drainage hole at the bottom of unit, and drain all water outside.
- **Continuous Drainage**
- When you plan to leave this unit unused for a long time, please remove the rubber blockage from the drainage hole at the bottom of unit, and drain all water outside.
- You can use the continuous drainage with a drainage hose connected to the bottom drain hole,
- **When the unit is operating in the HEAT mode.**
- The continuous drainage is not required when the unit is operating in the COOL or DEHUMIDIFY modes. The unit can evaporate the condensated water automatically . Make sure the drainage hole is blocked.
- When operating in heating mode and for continuous drainage, connect the drain hose to the bottom drain hole as shown below;



- **Water Full Alarm Function**
- When water level reaches maximum height (without the drain tube connected), the water full indicator lamp illuminates.

Operating Instructions

Installation guide

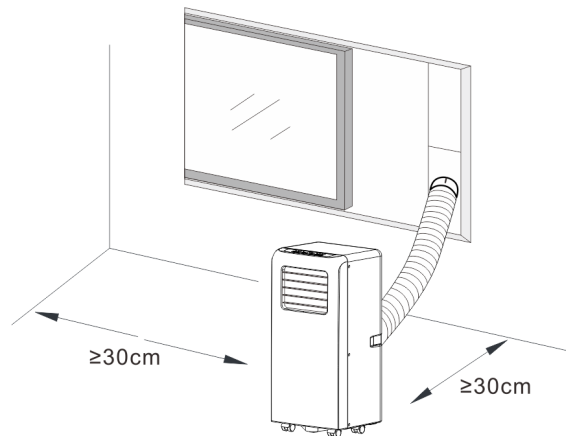


Fig 3

Exhaust Hose Installation

- **Temporary installation**
- Twist the housing adaptor and the window Connector to the ends of the exhaust hose.
- Insert the fixing clip of the housing adaptor into the openings at back of the air conditioner.
- Put the other end of the exhaust hose to the near window sill (see Fig.4).

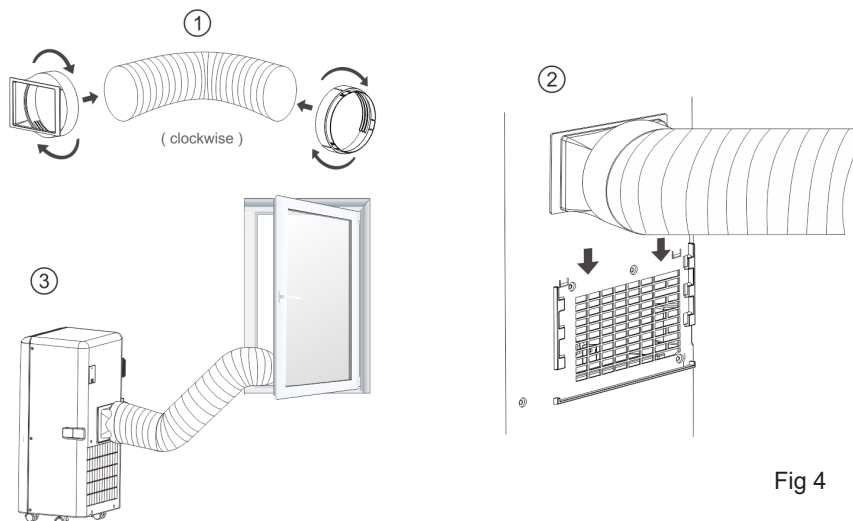


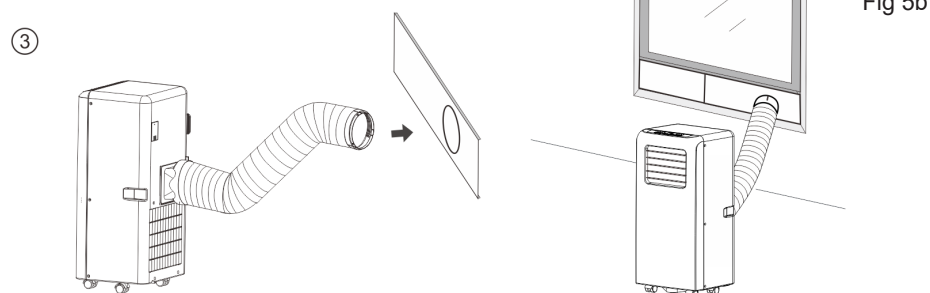
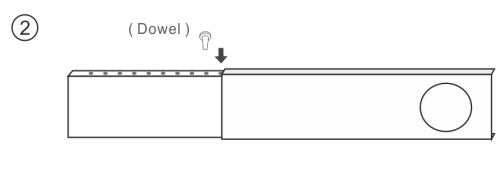
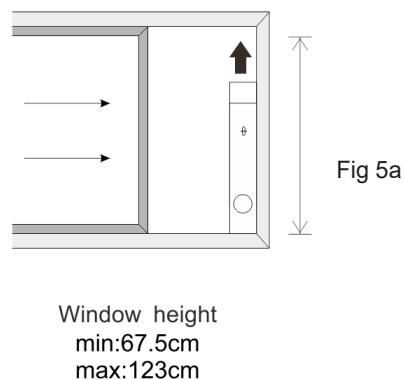
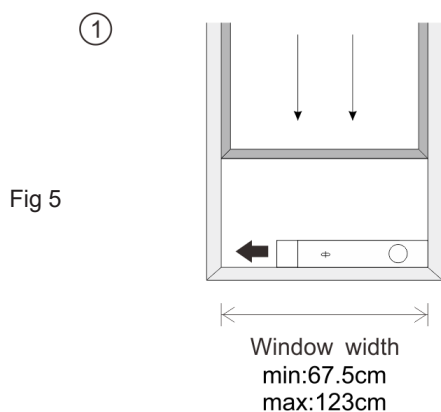
Fig 4

Operating Instructions

Installation guide

Exhaust Hose Installation

- **Window kit installation**
- The installation manner of window slider kit is mostly in “horizontal” or “vertical”. As shown Fig.5 and Fig.5a, check the min. and max. size of the window before the installation.
- Install the window kit on the window (Fig.5, Fig.5a);
- Adjust the length of the window slider kit according to the window width or height, and fix it with the dowel;
- Insert the window connector of the hose to the hole in the window kit (Fig.5b)



Operating Instructions continued

Remote Control

- When using the remote control, the emitter of the front section of the remote control must be aligned (pointed towards) the receiving window of the appliance body (near display screen).
- The remote control will have an operating distance of approximately 5m and within an angle range of 30 degrees.

Remote control battery fitment / replacement

- For battery fitment / replacement, the locking cradle must be removed from the back of the remote. Press and slide the cover outwards to remove.
- Take careful note of the battery polarity markings, place 2 x AAA batteries into the the recesses and refit the cover and insure it 'clicks' and locks into place.

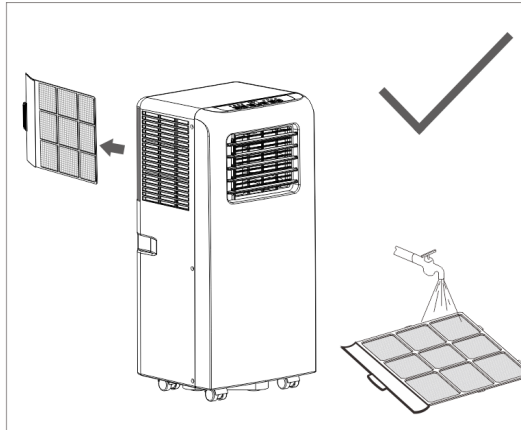
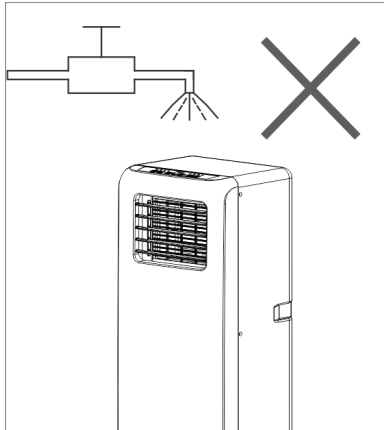
WARNING!

- Before cleaning, maintenance or moving the appliance, switch off and unplug it from the wall outlet.
- Do not immerse the appliance in water or other liquids. Do not spray it with liquids. Do not allow water to drip on or into the housing.

Cleaning and maintenance

- **Dusting:** Clean your unit periodically by lightly running a vacuum cleaner nozzle (soft brush) over the front outlets and air inlet grilles to remove any dust or dirt that may have accumulated inside or on the unit. Alternatively, use a soft, dry cloth for dusting.
- **Stubborn stains:** Use a slightly damp, soapy cloth for stubborn stains but be sure the cloth is not too wet. Use caution around the housing. Do not allow the electrical components to be exposed to water.
- **Storage:** If not in use for an extended period, store in a safe, dry location, protected from dust and located so it is not in direct sunlight.
- **Service/repair:** The appliance requires no maintenance and contains no user-serviceable parts. Do not attempt to take the motor unit apart, repair or modify it. Do not operate the appliance if its power cord or plug is damaged, or when it is working abnormally. In case of damage or malfunction, or if the cord is damaged, have the unit repaired by trained personnel only, or contact the after sales support line for advice on repair or replacement.

Cleaning and maintenance (continued)



- **Air Filter**
- If the air filter becomes clogged with dust/dirt, the air filter should be cleaned (at least every two weeks during normal use).
- Removal
- Open the air inlet grille and take out the air filter.
- Cleaning
- Clean the air filter with neutral detergent in lukewarm (40°C) and allow to dry naturally in the shade.
- Mounting
- Replace the air filter back into the inlet grille

Other Useful Information

Troubleshooting

Troubles	Possible Causes	Suggested Remedies
1. Unit does not start when pressing on/off button	- Water full indicator lamp blinks, and water tray is full.	Dump the water out of the water tray.
	- Room temperature is higher than the setting temperature. (Electric heating mode)	Reset the temperature
	- Room temperature is lower than the setting temperature. (Cooling mode)	Reset the temperature
2. Not cool enough	- The doors or windows are not closed.	Make sure all the windows and doors are closed.
	- There are heat sources inside the room.	Remove the heat sources if possible
	- Exhaust air hose is not connected or blocked.	Connect or clean the exhaust air hose.
	- Temperature setting is too high.	Reset the temperature
	- Air inlet is blocked.	Clean the air inlet.
3. Noisy	- The ground is not level or not flat enough	Place the unit on a flat, level ground if possible
	- The sound comes from the flowing of the refrigerant inside the air conditioner	It is normal.
4. E0 Code	Room temperature sensor failed	Replace room temperature sensor (the unit can also work without replacement.)
5. E1 Code	Condenser temperature sensor failed	Replace condenser temperature sensor
6. E2 Code	Water tray full when cooling	Take off rubber stopper and empty the water.
7. E3 Code	Evaporator temperature sensor failed	Replace evaporator temperature sensor
8. E4 Code	Water tray full when heating	Please empty the water tray.

Other Useful Information

Safety Precautions On Servicing

Checks to the refrigeration equipment

Where electrical components are being changed, they shall be fit for the purpose and to the correct specification. At all times the manufacturer's maintenance and service guidelines shall be followed. If in doubt consult the manufacturer's technical department for assistance. The following checks shall be applied to installations using flammable refrigerants:

- The charge size is in accordance with the room size within which the refrigerant containing parts are installed;
- The ventilation machinery and outlets are operating adequately and are not obstructed;
- If an indirect refrigerating circuit is being used, the secondary circuit shall be checked for the presence of refrigerant;
- Marking to the equipment continues to be visible and legible. Markings and signs that are illegible shall be corrected;
- refrigeration pipe or components are installed in a position where they are unlikely to be exposed to any substance which may corrode refrigerant containing components, unless the components are constructed of materials which are inherently resistant to being corroded or are suitably protected against being so corroded.

Checks to electrical devices

Repair and maintenance to electrical components shall include initial safety checks and component inspection procedures. If a fault exists that could compromise safety, then no electrical supply shall be connected to the circuit until it is satisfactorily dealt with. If the fault cannot be corrected immediately but it is necessary to continue operation, an adequate temporary solution shall be used. This shall be reported to the owner of the equipment so all parties are advised.

Initial safety checks shall include:

- those capacitors are discharged: this shall be done in a safe manner to avoid possibility of sparking;
- that there no live electrical components and wiring are exposed while charging, recovering or purging the system;
- that there is continuity of earth bonding.

Releasing refrigerant into atmosphere is strictly forbidden!

Other Useful Information

Safety Precautions On Servicing

Please follow these warnings when to undertake the following when servicing a dehumidifier with R290.

Checks to the area

Prior to beginning work on systems containing flammable refrigerants, safety checks are necessary to ensure that the risk of ignition is minimized. For repair to the refrigerating system, the following precautions shall be complied with prior to conducting work on the system.

Work procedure

Work shall be undertaken under a controlled procedure so as to minimize the risk of a flammable gas or vapor being present while the work is being performed.

General work area

All maintenance staff and others working in the local area shall be instructed on the nature of work being carried out. Work in confined spaces shall be avoided. The area around the workspace shall be sectioned off. Ensure that the conditions within the area have been made safe by control of flammable material. **Checking for presence of refrigerant**

The area shall be checked with an appropriate refrigerant detector prior to and during work, to ensure the technician is aware of potentially flammable atmospheres. Ensure that the leak detection equipment being used is suitable for use with flammable refrigerants, i.e. no sparking, adequately sealed or intrinsically safe. **Presence of fire extinguisher**

If any hot work is to be conducted on the refrigeration equipment or any associated parts, appropriate fire extinguishing equipment shall be available to hand. Have a dry powder or CO² fire extinguisher adjacent to the charging area.

No ignition sources

No person carrying out work in relation to a refrigeration system which involves exposing any pipe work that contains or has contained flammable refrigerant shall use any sources of ignition in such a manner that it may lead to the risk of fire or explosion. All possible ignition sources, including cigarette smoking, should be kept sufficiently far away from the site of installation, repairing, removing and disposal, during which flammable refrigerant can possibly be released to the surrounding space. Prior to work taking place, the area around the equipment is to be surveyed to make sure that there are no flammable hazards or ignition risks. "No Smoking" signs shall be displayed.

Ventilated area

Ensure that the area is in the open or that it is adequately ventilated before breaking into the system or conducting any hot work. A degree of ventilation shall continue during the period that the work is carried out. The ventilation should safely disperse any released refrigerant and preferably expel it externally into the atmosphere.

Other Useful Information (Cont.)

Compliance

This appliance has been fully tested and meets all requirements as set out by standard AS/NZS 60335.



The RCM Mark (Regulatory Compliance Mark) indicates that the product complies with the relevant guidelines of the ACMA as well as corresponding government requirements for the safety of electrical devices.

Responsible disposal

- At the end of its working life, make the appliance unserviceable by unplugging it from the power outlet and cutting the power cord.
- Do not throw this appliance out with your household rubbish. Electrical and electronic products contain substances which can have a detrimental effect on the environment and human health if disposed of inappropriately. Observe any local regulations regarding the disposal of electrical consumer goods and dispose of it appropriately for recycling. Contact your local council for advice on recycling facilities in your area.



Kensington.

Warranty

We pride ourselves on producing a range of quality home appliances that are both packed with features and completely reliable. We are confident in our products, we back them up with a 3 year warranty. Now you too can relax knowing that you are covered.

Customer Helpline NZ: 0800 422 274

This product is covered by 3 years warranty when accompanied by proof of purchase.

IM Version 1.0 April 2022