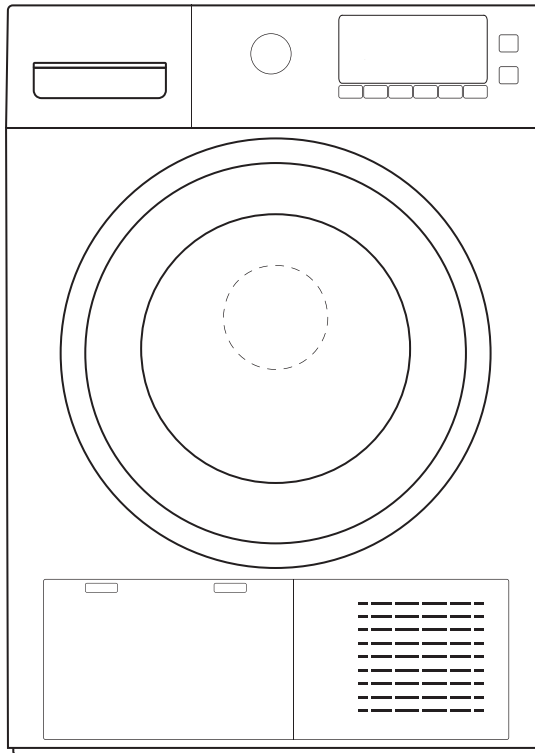




Heat Pump Tumble Dryer

MDC80-CH01/B05E-AU(7)-P2



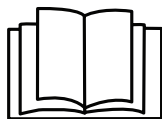
User Manual

TABLE OF CONTENTS:

1. Safety Instructions	P. 3
2. Installation	P. 8
3. Operation	P. 11
4. Cleaning and care	P. 17
5. Troubleshooting	P. 18
6. Technical data	P. 19
7. Notice	P. 20


1. Safety Instructions

Before using this product, carefully read these instructions and keep the user manual for future reference.



Read the instructions

1. This appliance can be used by children aged from 8 years and above and persons with reduced physical, sensory or mental capabilities or lack of experience and knowledge if they have been given supervision or instruction concerning use of the appliance in a safe way and understand the hazards involved. Children shall not play with the appliance. Cleaning and user maintenance shall not be made by children without supervision.
2. Children of less than 3 years should be kept away unless continuously supervised.
3. Children should be supervised to ensure that they do not play with the appliance.
4. If the supply cord is damaged, it must be replaced by the manufacturer, its service agent or similarly qualified persons in order to avoid a hazard.
5. The maximum mass of dry textile material in kilograms to be used in the appliance is 8.0 kg. Do not put more load than rated in this user manual.
6. The tumble dryer is NOT to be used if industrial chemicals have been used for cleaning.
7. This appliances has ventilation openings in the base. A carpet must not obstruct the openings.
8. **WARNING:** In the appliance enclosure or in the built-in structure, keep ventilation openings clear of obstruction.
9. The lint trap has to be cleaned frequently.
10. The lint must not to be allowed to accumulate around the tumble dryer.
11. Do not dry unwashed items in the tumble dryer.
12. Fabric softeners, or similar products, should be used as specified by the fabric softener instructions.

13. Items that have been soiled with substances such as cooking oil, acetone, alcohol, petrol, kerosene, spot removers, turpentine, waxes, and wax removers should be washed in hot water with an extra amount of detergent before being dried in the tumble dryer.
14. Items such as foam rubber (latex foam), shower caps, waterproof textiles, rubber backed articles and clothes or pillows fitted with foam rubber pads should not be dried in the tumble dryer.
15. **WARNING:** Never stop a tumble dryer before the end of the drying cycle unless all items are quickly removed and spread out so that the heat is dissipated.
16. **WARNING:** The appliance must not be supplied through an external switching device, such as a timer, or connected to a circuit that is regularly switched on and off by a utility.
17. Remove all objects from pockets such as lighters and matches.
18. The appliance must not be installed behind a lockable door, a sliding door, or a door with a hinge on the opposite side to that of the tumble dryer, in such a way that a full opening of the tumble dryer door is restricted.
19.  **Warning: Risk of fire / Flammable materials**
The appliance contains an environmentally friendly but flammable R290 refrigerant in the amount of 150g. Keep away from open flame and other sources of ignition.
20. Do not stack this tumble dryer on the washing machine without stacking kits. (If you want to stack this dryer on a washing machine, please purchase the independent parts. Installation shall be done by the manufacturer, its service agent, or similarly qualified persons to avoid any hazards.)
21. Oil-affected items can ignite spontaneously, especially when exposed to heat sources such as in a tumble dryer. The items become warm, causing an oxidation reaction in the oil. Oxidation creates heat. If the heat cannot escape, the items can become hot enough to catch fire. Piling, stacking, or storing oil-affected items can prevent heat from escaping and so create a fire hazard.

22. This tumble dryer is intended for drying typical amounts of household laundry, which have been washed with water. It has been designed solely for private use and is not suitable for commercial or shared use (i.e. by several families in an apartment building).
23. Use this appliance only as described in this user manual.
24. This appliance is for indoor use only.
25. Any other use is deemed improper and may result in damage to property or even personal injury.
26. The appliance should not be overturned during normal use or maintenance.
27. Do not plug or unplug the product from the electrical outlet with wet hands.
28. Do not forcefully pull the supply cord. Grasp the mains plug to disconnect the appliance.
29. Do not bend, clamp or damage the supply cord and the plug.
30. Do not operate the appliance with a damaged cord or plug, or after the appliance malfunctions or is dropped or damaged in any manner. Prior to operation, check the device for physical damage.
31. **WARNING:** Regularly clean the lint trap
32. The appliance is to be connected to a socket-outlet having earthing contact.
33. Install the tumble dryer into an easily accessible socket outlet located near the appliance.
34. If the appliance has an abnormally high temperature, pull the mains plug immediately.
35. Do not lean on the opened door of the dryer.
36. Always close the door after use.
37. Do not operate the tumble dryer without the lint filter.
38. Do not dry clothes before spinning.
39. Do not expose the tumble dryer to direct sunlight.
40. Do not install the tumble dryer in a humid and saturated environment.
41. When maintaining and cleaning, ensure to pull out the mains plug and do not spray water directly onto the tumble dryer.
42. Openings must not be obstructed.

43. The condensed water is not drinking water. It can cause health problems in both people and animals if consumed.
44. Install or store where it will not be exposed to temperatures below freezing or exposed to water or weather, which could cause permanent damage and invalidate the warranty.
45. Thoroughly spin the laundry in the washing machine. The high spin speed can reduce the drying time and save energy.
46. Make sure combustible sprays will not be close to the dryer when it is working, and once the gas leaks, do not touch the plug, or start/pause it.
47. Do not wash or dry articles that have been cleaned in, washed in, soaked in, or spotted with combustible or explosive substances (such as wax, oil, paint, gasoline, degreasers, dry-cleaning solvents, kerosene, etc.). Failure to do so may result in an explosion.
48. If it is unavoidable that fabrics that contain vegetable or cooking oil or have been contaminated by hair care products be placed in a tumble dryer they should first be washed in hot water with extra detergent. This will reduce, but not eliminate, the hazard.
49. Never attempt to operate this appliance if it is damaged, malfunctioning, partially disassembled or has missing or broken parts, including a damaged cord or plug.
50. Do not allow children on or in the appliance. Close supervision of children is necessary when the appliance is used near children.
51. Do not use the appliance when your hands are wet.
52. Do not store plastic, paper, or clothing that may burn or melt on top of the dryer during operation.
53. Do not dry articles containing rubber, plastic, or similar materials such as padded bras, tennis shoes, galoshes, bath mats, rugs, bibs, baby pants, raincoats, plastic bags, or pillows that may melt or burn. Some rubber materials, when heated, can under certain circumstances produce fire by spontaneous combustion.
54. The door shall be opened only after the programme of the drying machine is completed. Do not open the door before the programme is finished to avoid the human skin from being scalded by hot steam or an overheated drying machine.

55. Remove all packaging materials before using the appliance. Keep the packaging materials away from children they pose a risk of swallowing and suffocation.
56. The tumble dryer is not intended for outdoor use.
57. Before connecting the tumble dryer, ensure that the connection data on the data plate (fuse rating, voltage, and frequency) match the mains electricity supply. If in any doubt, consult a qualified electrician.
58. The appliance corresponds to protection class I and may only be connected to a plug with a protective conductor that has been installed properly. When connecting the appliance to the mains, make sure that the mains voltage is correct. You can find more information about this on the rating plate.
59. The electrical safety of this tumble dryer can only be guaranteed when correctly earthed. It is essential that this standard safety requirement is met. If in any doubt, please have the household wiring system tested by a qualified electrician.
60. The manufacturer cannot be held liable for the consequences of an inadequate earthing system (e.g. electric shock).
61. **WARNING:** The socket and the grounding wire must be installed by an electrician to prevent incorrect installation or use of the socket and to guarantee the safe use of electricity. No connection between the grounding wire and the neutral wire, otherwise the cabinet will be charged, which is likely to cause the danger of electric shock.
62. Do not connect the tumble dryer to the mains electricity supply by an extension lead, multi-socket adapter, or similar. Extension leads are a fire hazard and do not guarantee the required safety of the appliance.
63. The manufacturer accepts no liability for damage caused by improper use.
64. The packaging is designed to protect the appliance from damage during transportation. The packaging materials are environmentally friendly and should be recycled. Recycling the packaging can reduce the use of raw materials in the manufacturing process and the amount of waste in landfill sites.

1.1 Disposal of the old appliance

This appliances contains flammable refrigerants R-290 in the amount of 150g.

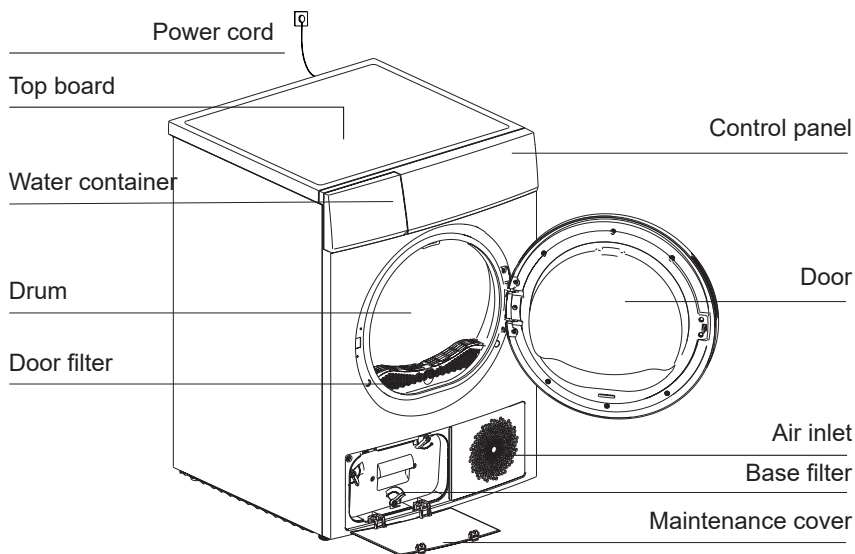
WARNING! Ensure to follow your local requirements for disposal of appliances. Discarded appliances can be dangerous.

Do not dispose of the product by putting it in fire.

Take care not to damage the tumble dryer's pipework and heat exchanger before or during transportation to an authorised collection depot. This is to ensure that refrigerant in the tumble dryer and oil in the compressor are contained, and will not leak into the environment. Dispose of it at your local community waste collection/recycling centre for electrical and electronic appliances. You are also responsible for deleting any personal data that may be stored on the appliance being disposed of. Ensure that your old appliance presents no danger to children while being stored awaiting disposal.

2. Installation

2.1 Product description

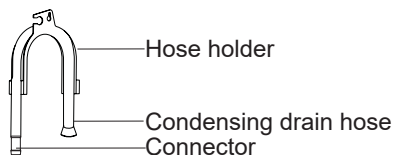


Note: Pictures are for illustration only. The actual product may differ. Refer to the product you purchased.

2.1.1 External drainage hose

Note: The accessories are intended for selected models.

If you own the direct drain set, remove the connector from the hose to use it. The drain hose can be installed directly on this model without using the connector.



2.2 Transport

Note: Move carefully. Do not grasp any of the protruding parts of the appliance. The door cannot be used as a handle for transport. If the dryer can't be transported erectly, the dryer can be tilted to the right less than 30°.

Risk of injury and damage!

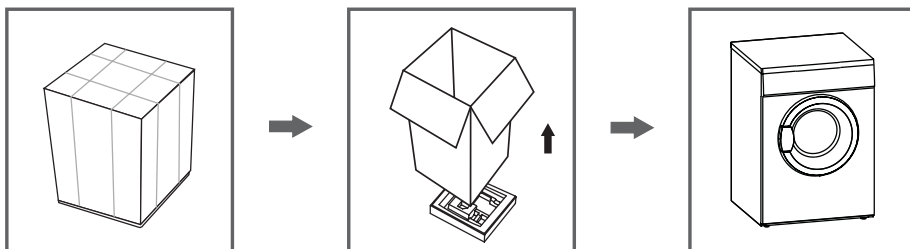
Improper handling of the appliance may result in injury.

- The appliance is very heavy. Never transport or carry the appliance alone; always with the assistance of another person.
- Remove all obstacles on the transport route and from the installation location, e.g., open doors and clear away objects lying on the floor.
- Do not use the open door as a handhold.
- Remove all packaging material before using the appliance.
- Before setting up the tumble dryer, check it for any externally visible damage.
- Do not install or use a damaged tumble dryer.
- Do not install the dryer in a room with a frost risk.
- At temperatures around freezing point, the tumble dryer may not be able to operate correctly. There is a risk of damage if the condensed water is allowed to freeze in the pump and hoses.

2.3 Unpack

Remove and safely discard any packaging material or promotional labels attached to the tumble dryer. Unpack in a well ventilated area.

Prior to installation, visually check if the dryer has any defects. If the dryer is damaged, do not have it installed. Damaged products cause risks to your safety.



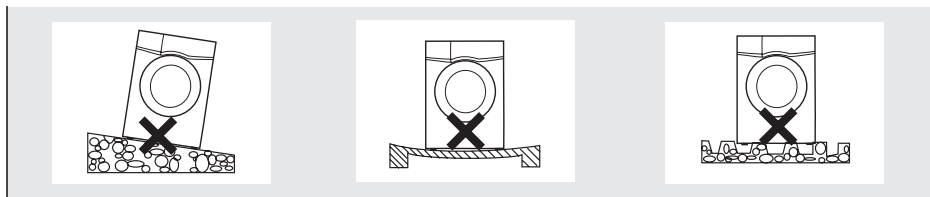
Note: Let your dryer wait for 12 hours before starting to use it.

CAUTION: Risk of personal injury! To avoid the risk of personal injury or property damage, have two people move and unpack this appliance into place.

WARNING: Children can become entangled in the packaging film or swallow small parts and suffocate. Do not allow children to play with the packaging.

2.4 Installation position

1. It is recommended that, for your convenience, the tumble dryer is positioned close to your washing machine.
2. Do not stack this tumble dryer on the washing machine without stacking kits. (If you want to stack this dryer on a washing machine, please purchase the independent parts. Installation shall be done by the manufacturer, its service agent, or similarly qualified persons to avoid hazards.)
3. The tumble dryer must be installed in a clean place where dirt does not accumulate. Air must be able to circulate freely around the appliance. Do not obstruct the front air inlet or the air intake grilles at the back of the appliance.
4. To keep vibration and noise to a minimum when using the tumble dryer, place it on a stable and level surface.
5. The feet must never be removed.

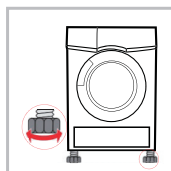


WARNING:

- The appliance must not be installed behind a lockable door, a sliding door, or a door with a hinge on the opposite side to that of the tumble dryer, in such a way that a full opening of the tumble dryer door is restricted.
- Do not restrict the floor clearance through deep pile carpets, strips of wood, or similar. This might cause heat build-up, which would interfere the appliance's operation.

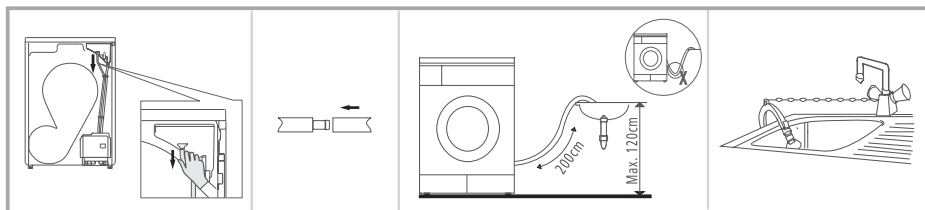
2.5 Level adjustment

The appliance must be perfectly level to ensure safe and proper operation. Once in its permanent operating position, check that the tumble dryer is completely level using a spirit level. If it is not, adjust the feet with a proper tool.



2.6 Installation

Note: Ensure the installation area is well-ventilated.



Remove the drain hose from the housing drawer.

Insert the drain hose and the external drainage hose into the connector.

Put the hose holder in the washing basin or any other sink.

2.7 Power supply connection

1. Ensure that the power supply's voltage is the same as the technical specification.
2. Do not connect the dryer with the power connection board, a universal plug, or socket, do not use multi-plug adapters and extension cables.

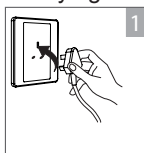
3. Operation

Note: This appliances contains flammable refrigerants R-290. Ensure that the system and the pipes are not harmed during operation and handling.

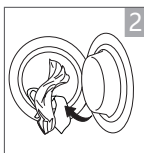
3.1 Quick start

Note: Prior to use, ensure the tumble dryer is installed properly.

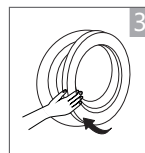
1. Before drying



Plug in to the mains electricity supply.



Load the laundry into the drum.



Close the door.

2. Drying



Turn the appliance on.

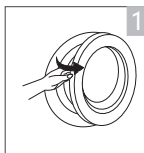
Select a programme.

Select a function or default.

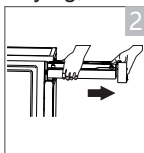
Start.

3. After drying

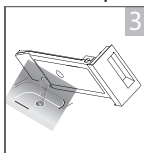
Note: After finished drying, the buzzer will beep and the display will show "End".



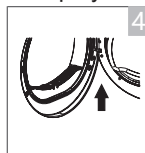
Open the door and take the laundry out from the drum.



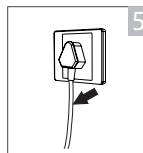
Pull out the water container.



Pour out condensate water.



Clean the lint filter.




Disconnect the tumble dryer from the mains electricity supply.

Note: If the socket with a switch is used, press the switch to turn off the power directly.












3.2 Before each drying

Notes:

- Leave it to stand for 2 hours after transporting. Before first use, clean the inner drum with a soft cloth.
 1. Put some clean rags into the drum.
 2. Plug the mains plug, then press the  **On/Off** button.



3. Select the **<Refresh>** programme, and press the **▶|| Start/Pause** button.
 4. After finishing this programme, refer to the "**cleaning and care**" section to clean the lint filter.
- During drying, the compressor and the water will generate noise which is perfectly normal.
1. Before drying, thoroughly spin the laundry in the washing machine. High spin speed shortens the drying time and saves energy.
 2. For uniform drying results, sort the laundry according to fabric type and select the appropriate drying programme.
 3. Before drying, please close zips, hooks and eyelets, buttons, tie fabric belts, etc.
 4. Remove all objects from pockets, such as lighters and matches.
 5. Sew in or remove under wiring from bras.
 6. Close duvet covers and pillowcases to prevent small items from being rolled up inside them.
 7. Leave jackets open and undo any long zips so that textiles dry evenly.
 8. Do not over dry the clothes, because over-dried clothes can quickly get creases.
 9. Do not dry the articles containing rubber or similar elastic materials.
 10. Keep the area around the tumble dryer clean. Coal dust or flour may cause an explosion.
 11. The door shall be opened only after the programme of the tumble dryer is finished to avoid being scalded by hot steam or an overheated drying machine.
 12. Clean the lint filter and empty the water container after each use to avoid extension of drying time and increase in energy consumption.
 13. Do not dry clothes after dry-clean process.

The reference weight of dry clothes (weight per item)

					
Sweater (mixed 800g)	Jacket (cotton 800g)	Jeans (800g)	Bath towel (cotton 900g)	Single bed- sheet (cotton 600g)	Work clothes (1120g)
					
Pyjamas (200g)	Long sleeve shirt (cotton 300g)	T-shirt (cotton 180g)	Underwear (cotton 70g)	Socks (mixed- weave 50g)	

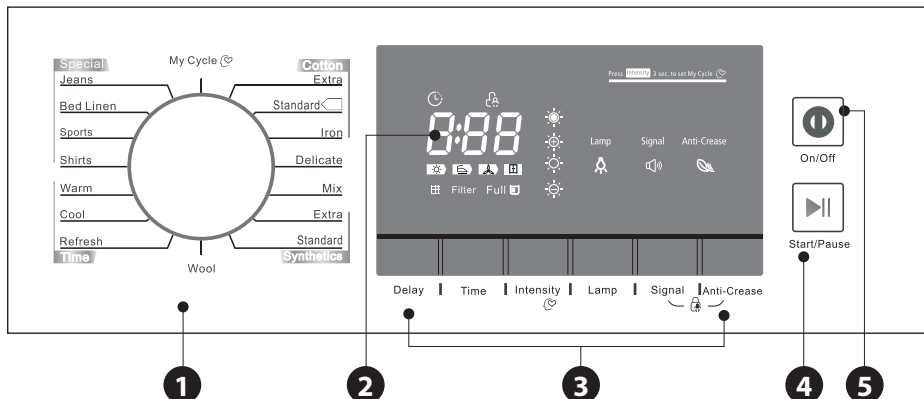
Note:

- Do not overload the dryer.
- Not suitable for dripping wet textiles. The tumble dryer may be damaged or even cause a fire.
- Only dry laundry that is suitable for tumble drying. Check the labels for washing:

	Suitable for tumble drying
	Normal drying process: Tumble drying in the tumbler is possible under a normal load and temperature 80°.

	Mild drying process: Caution is appropriate when tumble drying. Select mild process with reduced thermal action.
	Do not tumble dry: Articles unsuitable for drying in the tumbler.

3.3 Control panel



❶ Programmes

Different drying cycles can be selected according to the users need and the type of laundry to be dried.

❷ Display

This display shows the setting, estimated program time remaining and status messages of your dryer.

❸ Option

These buttons are used for setting additional functions.

❹ Start/Pause ▶||

Press the button to start or pause the drying cycle.

❺ On/Off ⏻

Press the button to switch the appliance on or off.



3.4 Display

	Delay		Empty water container (warning)
	Child lock		Lamp
	Remaining time indicator / Error message		Signal
	Cycle phase status		Anti-crease
	Clean filter (warning)		My cycle
	Intensity (four grades)		


3.5 Options

Delay

This function is used to delay clothes drying time by 24 hours. When the delayed programme starts, the time starts to countdown on display, and the delay icon blinks.

1. Load your laundry and make sure the tumble dryer door is closed.
2. Press the  **On/Off** button, turn the programme selector knob and select the desired programme.
3. You can additionally select the **Anti-Crease** function according to your need.
4. Press the **Delay** button.
5. Continue to press **Delay** to select the desired delay time.
6. After the **▶|| Start/Pause** button is pressed, the dryer is in the run condition. The drying procedure will be automatically performed when the delay time is over.
7. If you press the **▶|| Start/Pause** button again, the delay function will be paused.
8. If you want to cancel the **Delay** function, press the  **On/Off** button.

Time

When the Cool, Wool, or Refresh programme is selected, the  Time button can be used to adjust the drying time by 10 minutes.

Intensity

You can adjust the dryness level of the laundry by pressing the **Intensity** button. There are four grades.

1. The intensity function can be activated only before the programme starts.
2. Press the **Intensity** button repeatedly to increase the drying grade.
3. Except for the **Cotton Iron**, **Delicate**, **Wool**, **Warm**, **Cool**, and **Refresh** programmes, all the other programmes can be adjusted with the **Intensity** function.

Lamp

The drum light will be on for 3 minutes when the button is pressed or 1 minute when the door is open.

Signal

Set the buzzer on or off. In the default condition, the buzzer is on. When the buzzer is on:

1. The dryer will affirm the pressed function button by a sound.
2. If the programme knob is rotated during the dryer is running, the buzzer will remind the user that this is an invalid operation.
3. When the drying programme is done, the buzzer will beep.

Anti-Crease


At the end of the drying cycle, the anti-crease time is 30 minutes (default) or 120 minutes (selected). This function prevents the laundry from creasing. The laundry can be removed during the anti-crease phase. Except for **Cool**, **Wool**, and **Refresh**, all the other programmes provide this function.

My Cycle

It is used to define and save your favourite programme, which is used frequently.


1. Select the desired programme and other drying functions.
2. Press and hold the **Intensity** button for 3 seconds until the beep sounds, and the desired programme has been saved.
3. Turn the programme selector to the **My Cycle** position, and start your favourite programme. If you want to change the **My Cycle** settings, repeat steps 1 and 2.

Child Lock

1. This appliance incorporates a special child safety lock, preventing children from carelessly pressing buttons or making faulty operation.
2. When the dryer is running or pausing, press the **Anti-Crease** and **Signal** button for 3 seconds to activate the child lock function.
3. When **Child Lock** function is set, the display will show the **Child Lock** icon and all buttons are deactivated, except for the  **On/Off** button.
4. To deactivate the **Child Lock** function, press in the same time the **Anti-Crease** and **Signal** buttons for 3 seconds.

3.6 Programmes


3.6.1 Programme selector

1. When the LED display screen brightens up, rotate the programme knob to select the desired programme.
2. Select the **Delay**, **Time**, **Intensity**, **Anti-Crease**, or **Signal** functions for additional options.
3. Press the **▶|| Start/Pause** button.
4. Press the  **On/Off** button after the programme has been completed.

3.6.1 Programme start

The drum will rotate after the programme starts. The cycle phase LED on display will light up, and the remaining programme time will be displayed.

3.6.2 Programme end

1. The drum will stop rotating after the programme ends. The display will show "End", and LED will illuminate. The dryer will start the **Anti-Crease** function if the user doesn't remove the load. Press the  **On/Off** button after unloading the tumble dryer to cut off power and pull out the plug.
2. Deal with the problems according to the "**Troubleshooting**" section, if there is an unexpected stop during the drying procedure or the dryer shows an **Error Code**.

3.6.3 Drying programmes table

Programme		Maximum load	Application / Properties	Delay	Time
Cotton	Extra	8.0 kg	For single or multi-layer cotton laundry to be dried entirely for direct storage.	Y	N
	Standard 				
	Iron		For single-layer cotton laundry to remain damp for ironing.		
Delicate		1.0 kg	For delicate laundry that is suitable for drying or laundry advised to be hand-washed at low temperature.	Y	N
Mix		3.5 kg	For mixed fabrics from cotton and synthetics.	Y	N

Synthetics	Extra	3.5 kg	For thick or multi-layer synthetic fabrics to be dried completely.	Y	N
	Standard		To dry thin synthetic textiles, which are not ironed, such as easy-care shirts, baby clothes, or socks.		
Wool		1.0 kg	For machine-washable wool items.	Y	N
Special	Jeans	4.0 kg	To dry jeans or leisure clothes that are spun at high speed in the washing machine.	Y	N
	Bed Linen	4.0 kg	To dry bed linen, bed sheets, or other large items.		
	Sports	3.0 kg	To dry sportswear and thin fabrics from polyester, which are not ironed.		
	Shirts	1.0 kg	For easy care laundry, such as shirts and blouses equipped with anti-crease functionality to minimize the ironing effort. Place clothes loosely in the dryer. Once dried, remove it quickly and hang it on a clothes hanger.		
My Cycle		-	Define and save your favourite programme.	Y	-
Time	Warm	-	To dry individual items or complete the drying process of multi-layer fabrics with different drying behaviour, such as jackets, pillows, or voluminous items Minimum 10 of min to a maximum of 120 min (in 10 min steps).	Y	Y
	Cool	-	To air items without heating. Minimum 10 min. to maximum 30 min.(in 10 min steps).		
	Refresh	1.0 kg	To refresh clothes, keep a closed environment for a long time, or to remove odours — minimum 20 min to maximum 150 min (in 10 min steps).		

Note for Test Institutes:

- ☐ Test programme in accordance with AS/NZS 2040.1:2015 & AS/NZS 2040.2:2015.
- This programme is suitable for drying regular wet cotton laundry. It is the most efficient programme in terms of energy consumption for cotton.

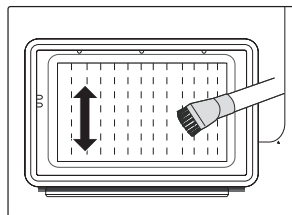
4. Cleaning and care

4.1 Cleaning the heat exchanger

WARNING: Do not touch the heat exchanger with your hands, as this may cause injury.

CAUTION: Allow the dryer to cool down completely before cleaning.


- As necessary, approximately once every 6 months, remove the lint from the heat exchanger using a vacuum cleaner with a dusting brush attached.
- Clean the heat exchanger without applying any pressure. Otherwise the heat exchanger could be damaged. The dryer will not dry if the cooling fins are damaged or bent.

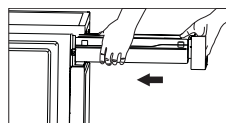
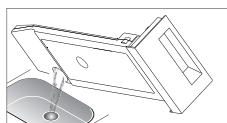
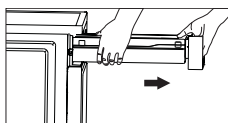


4.2 Cleaning

4.2.1 Empty the water container

WARNING:

- Empty the water container after each use. Once the water container is filled, the programme will be paused, and the "Full&  " icon will light up. After the water container is empty, the tumble dryer can be restarted by pressing the ► **Start/Pause** button.
 - Do not drink the condensate water.
 - Do not use the tumble dryer without the water container.
1. Pull out and hold the water container with two hands.
 2. Tilt the water container, and pour the condensate water into the basin.
 3. Reinstall the water container.

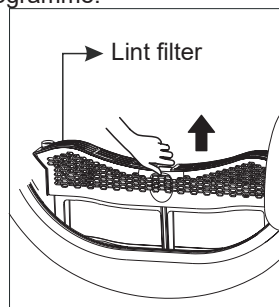


4.2.2 Clean the filters

This tumble dryer has a primary door lint filter and a base filter in front of the heat exchanger for additional protection. Make sure you clean the door filter after each cycle. The base filter needs to be cleaned after each fifth drying programme.

4.2.3 Clean the lint filter

1. Open the door.
2. Take out the lint filter.
3. Open the filter and remove the lint. Rinse it with water, if necessary.
4. Dry the filter thoroughly before reinstalling.



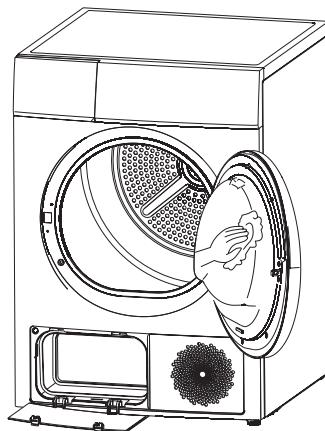
Note:

- The lint accumulated on the filter will block the air circulation, which will cause the extension of drying time and increase energy consumption. Therefore the lint filter shall be cleaned after each use.
- Take notice of the correct orientation before inserting the lint filter.
- Do not operate the dryer without the lint filter!
- Clean the lint filter after each use to prevent lint accumulation inside the dryer.

4.2.4 Cabinet and drum cleaning


WARNING: Disconnect the tumble dryer from the mains electricity supply before cleaning. Wear gloves when cleaning.

- Clean the housing, control panel, door seal, and the door, especially the inside window with a slightly damp cloth. After cleaning, dry all parts with a soft cloth.
- Clean the humidity sensor inside the drum.
- Take out all the filters, and clean the sealing and air flow openings.
- Do not use solvents, abrasive cleaners, glass cleaners, or all-purpose cleaners. These could damage plastic surfaces and other parts.
- The tumble dryer must never be hosed down.
- Please wear gloves when cleaning.
- Before starting the tumble dryer, dry all parts with a soft cloth.

**5. Troubleshooting**

With the help of the following notes minor faults in the performance of the appliance, some of which may result from incorrect operation, can be put right without contacting the Service Centre.






Repair work to electrical appliances should only be carried out by a suitably qualified person in strict accordance with current local and national safety regulations. Repairs and other work by unqualified persons could be dangerous. The manufacturer cannot be held liable for unauthorized work.


Display	Possible cause	Remedy
"E32"	Humidity sensor error.	If the problem persist, contact your local service centre.
"E33"	Temperature sensor error.	
"E82"	PCB communication error.	
"Full& 	Water pump failure or water level sensor failure.	Empty the water container.
	The water container is full.	

WARNING:

- Only authorized technicians can carry out repairs.
- If the LED displays another prompt and the tumble dryer does not work, please call the service.

Note: Before calling the service centre, check the user manual to see if you can solve the problem yourself.

Problem		Remedy
Display is not on.	<ul style="list-style-type: none"> Check if the power supply works. Check if the mains plug is inserted. 	<ul style="list-style-type: none"> Check the selected programme. Press the  On/Off button.
"Full&  " is lighting.	<ul style="list-style-type: none"> Empty water container. If the water container is not full, restart the dryer. 	<ul style="list-style-type: none"> If the "Full&  " icon still remains on, please call the service centre.
" " is lighting.	Clean the lint filter.	
The tumble dryer does not start.	<ul style="list-style-type: none"> Wait for the power to be restored. Check the power socket and make sure the plug is firmly inserted. Turn on the tumble dryer. 	<ul style="list-style-type: none"> Check whether the door is closed correctly. Check whether the programme is set. Press the  Start/Pause button.
Degree of dryness was not reached or drying time too long.	<ul style="list-style-type: none"> Clean lint filter and heat exchanger. Empty the water container. Check the drain hose. Keep the air inlet clean. 	<ul style="list-style-type: none"> Check installation place is appropriate. Use a higher drying intensity level programme or time programme.
There are humming noises.	The compressor is operating. These noises are quite normal and do not indicate a fault.	
The dryer switches off at the end of the programme.	The tumble dryer switches off automatically for energy saving. This is not an error but a normal function.	

WARNING: If you cannot deal with the problems by yourself and need help: Press the  **On/Off** button. Then, pull out the mains plug and call the service.

6. Technical data

Model	MDC80-CH01/B05E-AU(7)-P2
Rated voltage	220-240 V~
Rated frequency	50 Hz
Rated input power	800 W
Rated capacity*	8.0 kg (weight of dry laundry)
Refrigerant	R290
GWP (Global Warming Potential)	3
CO ₂ - eq	0.00 T
Quantity of refrigerant	150 g
Ambient temperature	+5°C ~ +35°C
Net dimensions (W x D x H)	595 × 650 × 845 mm
Weight of product	49 kg

* The rated capacity is the maximum capacity to be dried at one time. Ensure that the dry clothes loaded into the appliance do not exceed the rated capacity.

Notes:

- Do not install the tumble dryer in a room when there is a risk of frost occurring. At temperatures around freezing point, the tumble dryer may not be able to operate correctly.
- There is a risk of damage if the condensate water is allowed to freeze in the pump, hoses and / or condensate water container.

7. Notice

7.1 Compliance

This product has been fully tested and meets all requirements as set out by standards AS/NZS 60335.1:2020 and AS/NZS 60335.2.11:2017.



E2198

The RCM Mark (Regulatory Compliance Mark) indicates that the product complies with the relevant EMC Standards as well as corresponding government requirements for the safety of electrical devices.

7.2 Responsible Disposal

At the end of its working life, do not throw this appliance out with your household rubbish. Electrical and electronic products contain substances that can have a detrimental effect on the environment and human health if disposed of inappropriately. Observe any local regulations regarding the disposal of electrical consumer goods. Dispose of the appliance appropriately for recycling. Contact your local authorities for information on recycling facilities in your area.



living & co.

Warranty

We pride ourselves on producing a range of quality products that are both packed with features and completely reliable. We are so confident in our products, we back them up with a two years warranty.

Now you too can relax knowing that you are covered.

Customer Helpline NZ: 0800 422 274
This product is covered by two years warranty
when accompanied by proof of purchase.