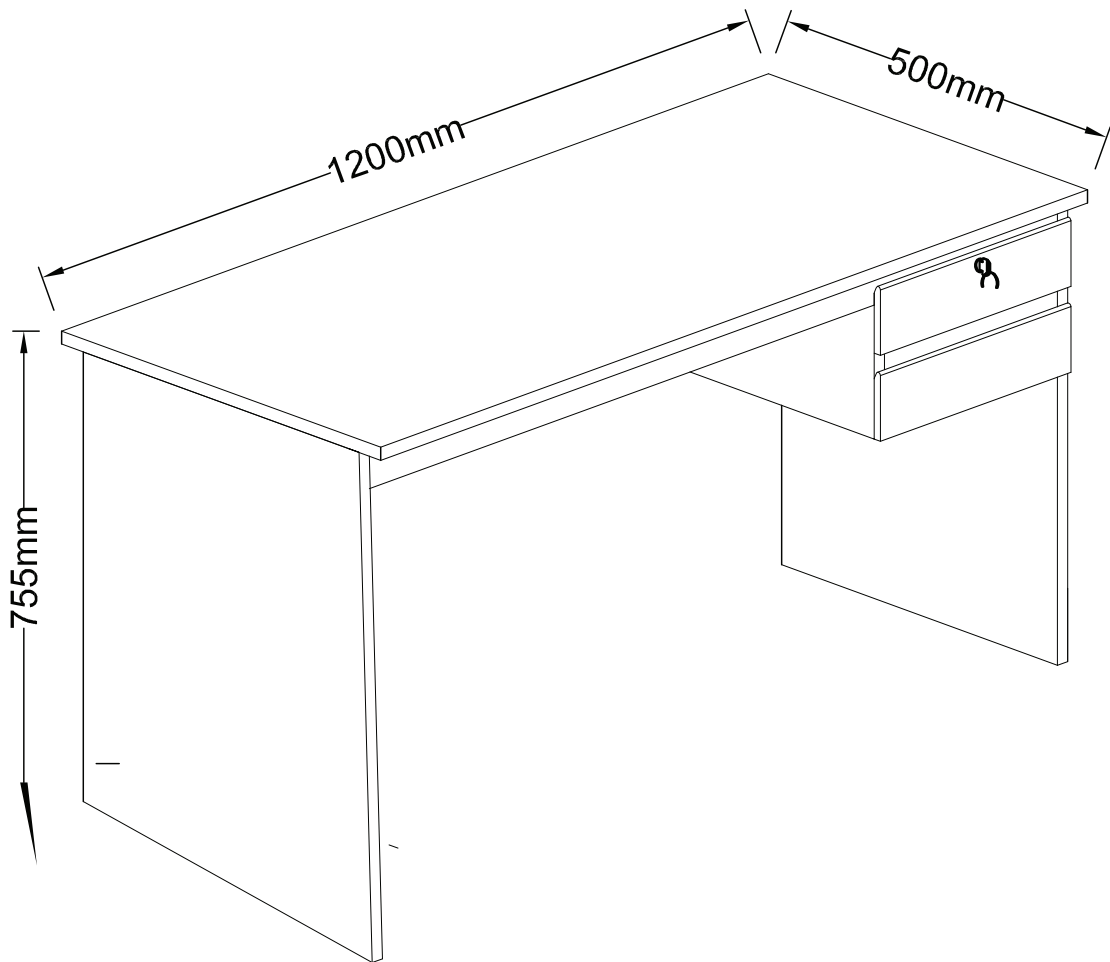




## INDIANA DESK



## INSTRUCTION MANUAL

Loading maximum weight 60kgs on top.

---

AFTER SALES SUPPORT

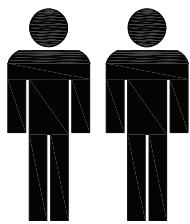
  0800 422 274



## Assembly Details

# 1.5<sub>hr</sub>

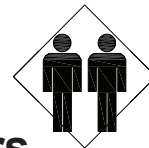
Approximate Assembly Time



2 Person Assembly

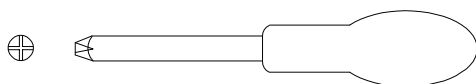
Floor Area:

# 2x2 meters



Required Assembly Space

Philips-Head Screwdriver



Required Assembly Tools

## Tips Before you Start

1. Please check that all parts are present before you start the assembly of your furniture.
2. For ease and speed of assembly, we recommend that before you commence each step of the assembly, that you identify all the parts required for that step.
3. For larger items, please ensure that you have sufficient space and people (as indicated on page 1 ) to assemble your product safely.
4. We recommend that, where possible, all items are assembled near to the area in which they will be placed in use, to avoid moving the product unnecessarily once assembled.
5. For the protection of your furniture, we recommend that the product is placed on a protected surface during assembly to prevent any damage.
6. During assembly please take care not to over-tighten any fittings, as this may damage the product. Do not use power tools.
7. Always place the product on a flat, steady and stable surface.
8. Do not stand on the product. Do not use the product as a stepladder.
9. This product is intended for indoor, household use only as it is a non-industrial product.
10. Please use caution and care when lifting the product to avoid personal injury and/or product damage.

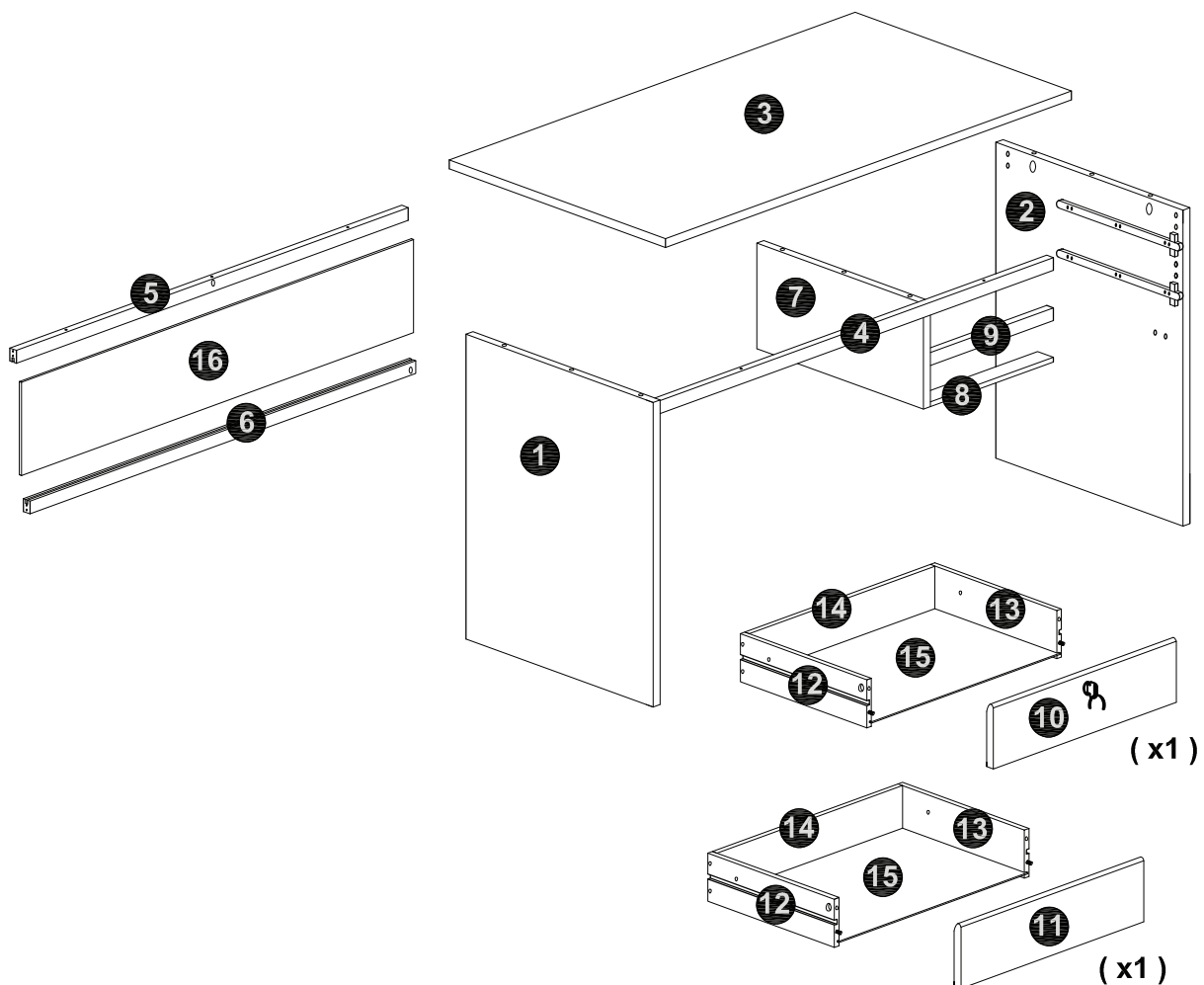
## Care and Maintenance

- ✓ To clean your item, please use a damp cloth and wipe clean.
- ✓ Never allow any kind of liquid to remain on your furniture. Absorption can cause wood to warp or finishes to de-laminate.
- ✓ Please do not place hot items (e.g. Hot drinks) directly on to the surface.
- ✓ Please do not drag and pull your furniture.

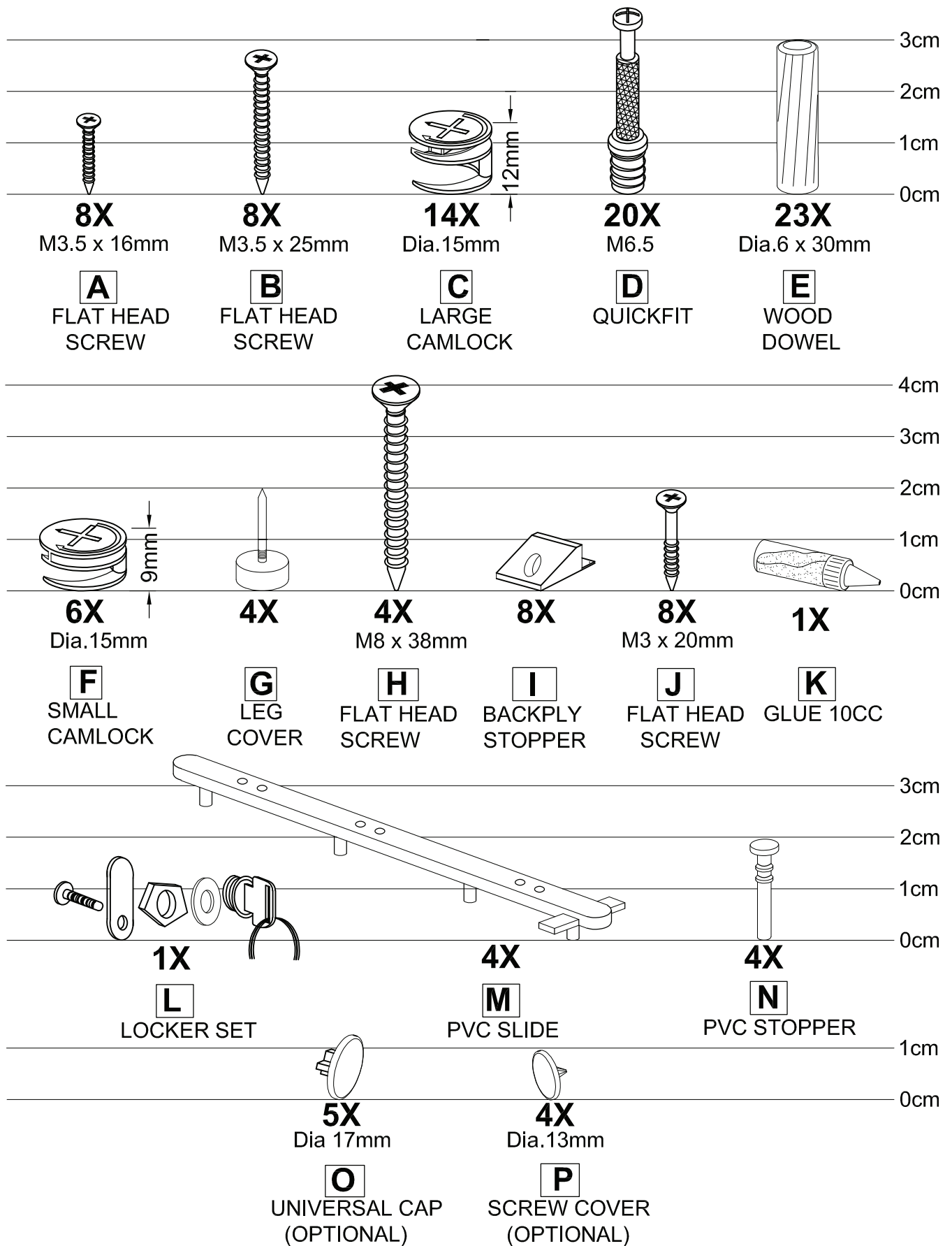
## Parts List

| NO. | PART LIST            | QTY |
|-----|----------------------|-----|
| (1) | LEFT SIDE PANEL      | 1   |
| (2) | RIGHT SIDE PANEL     | 1   |
| (3) | TABLE TOP            | 1   |
| (4) | FRONT SUPPORT(TOP)   | 1   |
| (5) | BACK SUPPORT(TOP)    | 1   |
| (6) | BACK SUPPORT(BOTTOM) | 1   |
| (7) | CENTRE PANEL         | 1   |
| (8) | BOTTOM SUPPORT       | 1   |
| (9) | DRAWER SUPPORT PANEL | 1   |

| NO.  | PART LIST               | QTY |
|------|-------------------------|-----|
| (10) | DRAWER COVER (TOP)      | 1   |
| (11) | DRAWER COVER (BOTTOM)   | 1   |
| (12) | DRAWER LEFT SIDE PANEL  | 2   |
| (13) | DRAWER RIGHT SIDE PANEL | 2   |
| (14) | DRAWER BACK PANEL       | 2   |
| (15) | DRAWER BASE             | 2   |
| (16) | BACK PANEL              | 1   |



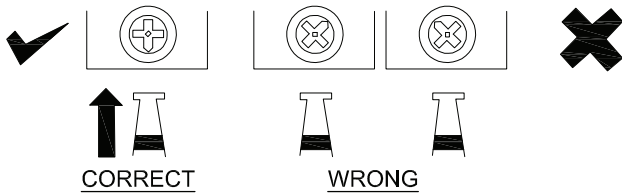
# Hardware List



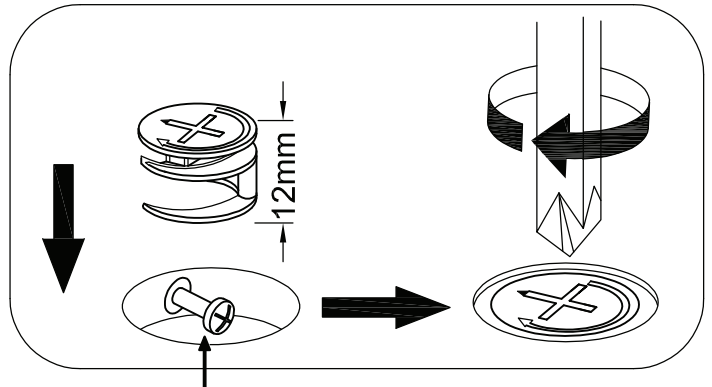
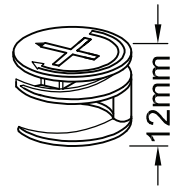
## Assembly

# SPECIAL TIPS FOR FITTING CAM-LOCKS AND QUICKFIT

WHEN FITTING CAMLOCK  
ENSURE STARTING POSITION IS CORRECT  
BEFORE YOU INSERT CONNECTING QUICKFIT  
TURN CLOCKWISE UNTIL SECURE

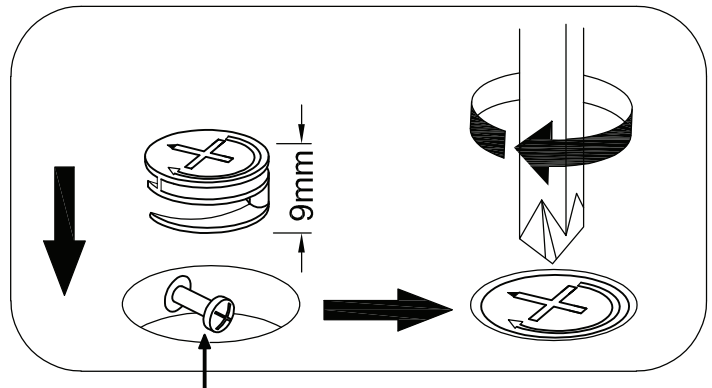
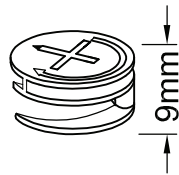


### CAM-LOCK



Quickfit head needs to be in centre

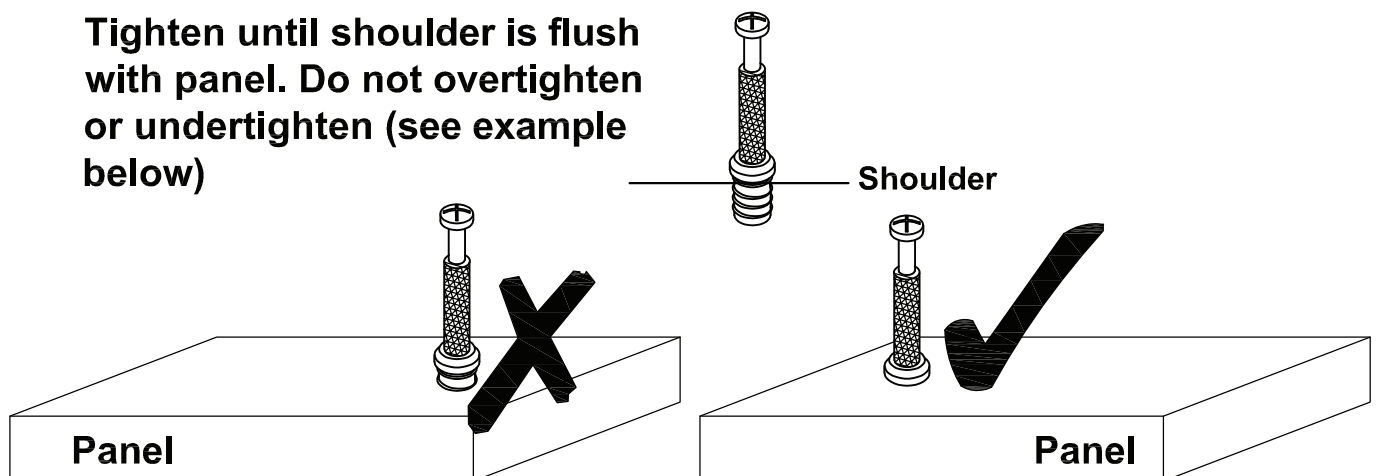
### DRAWER CAM-LOCK



Quickfit head needs to be in centre

### CAM BOLT

Tighten until shoulder is flush with panel. Do not overtighten or undertighten (see example below)

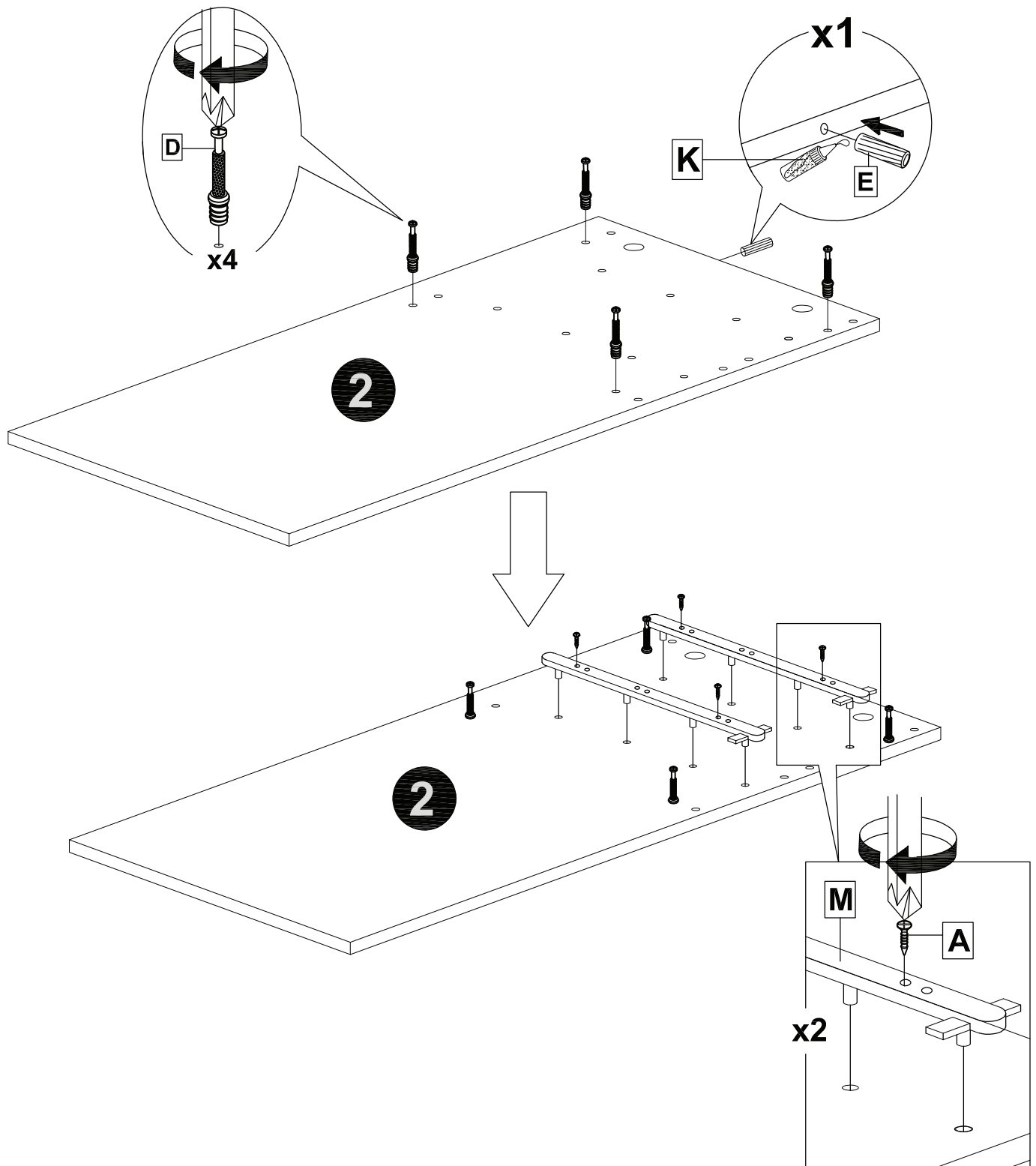


AFTER SALES SUPPORT

☎ NZ 0800 422 274

# Assembly

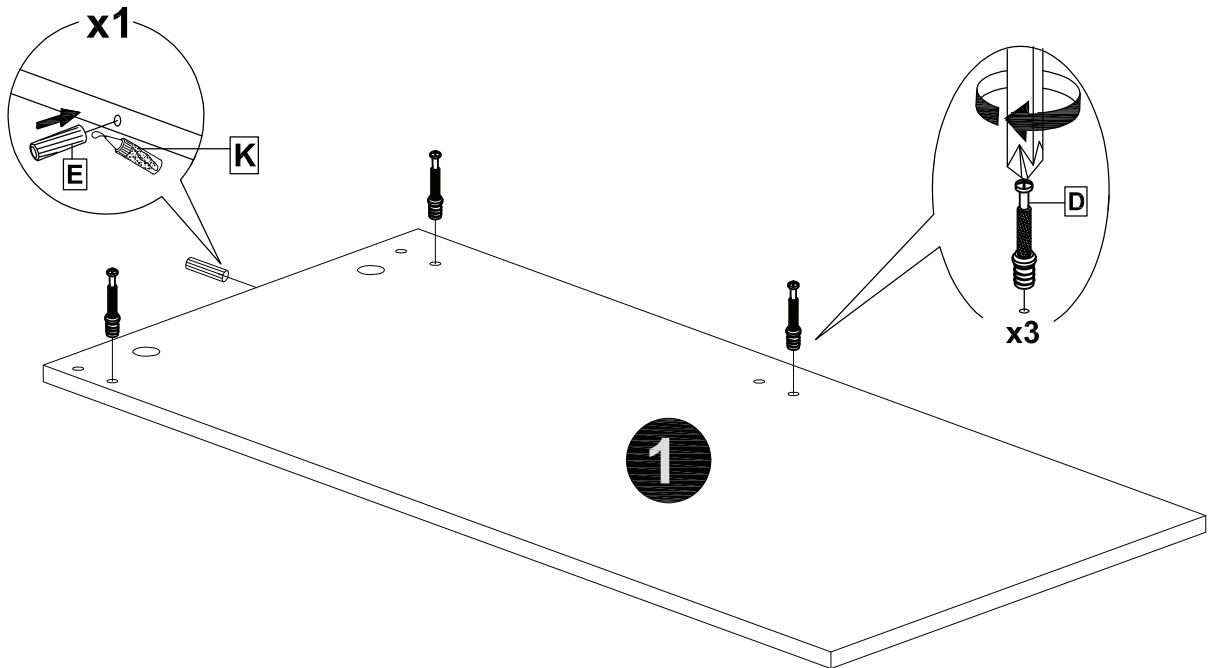
## STEP 1



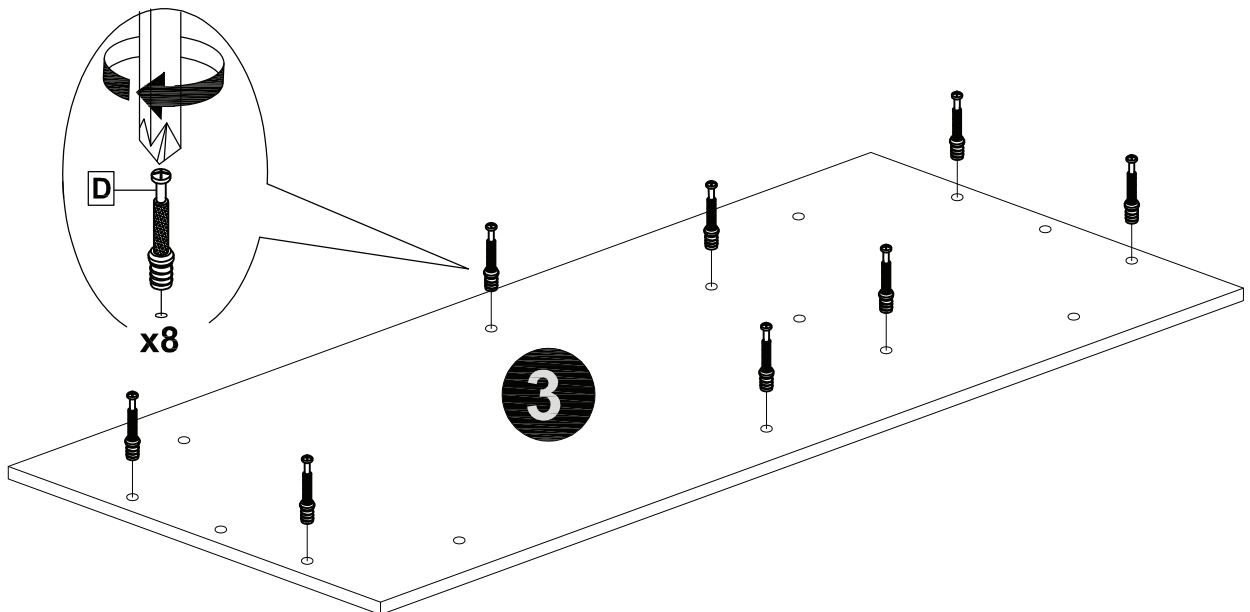


# Assembly

## STEP 2

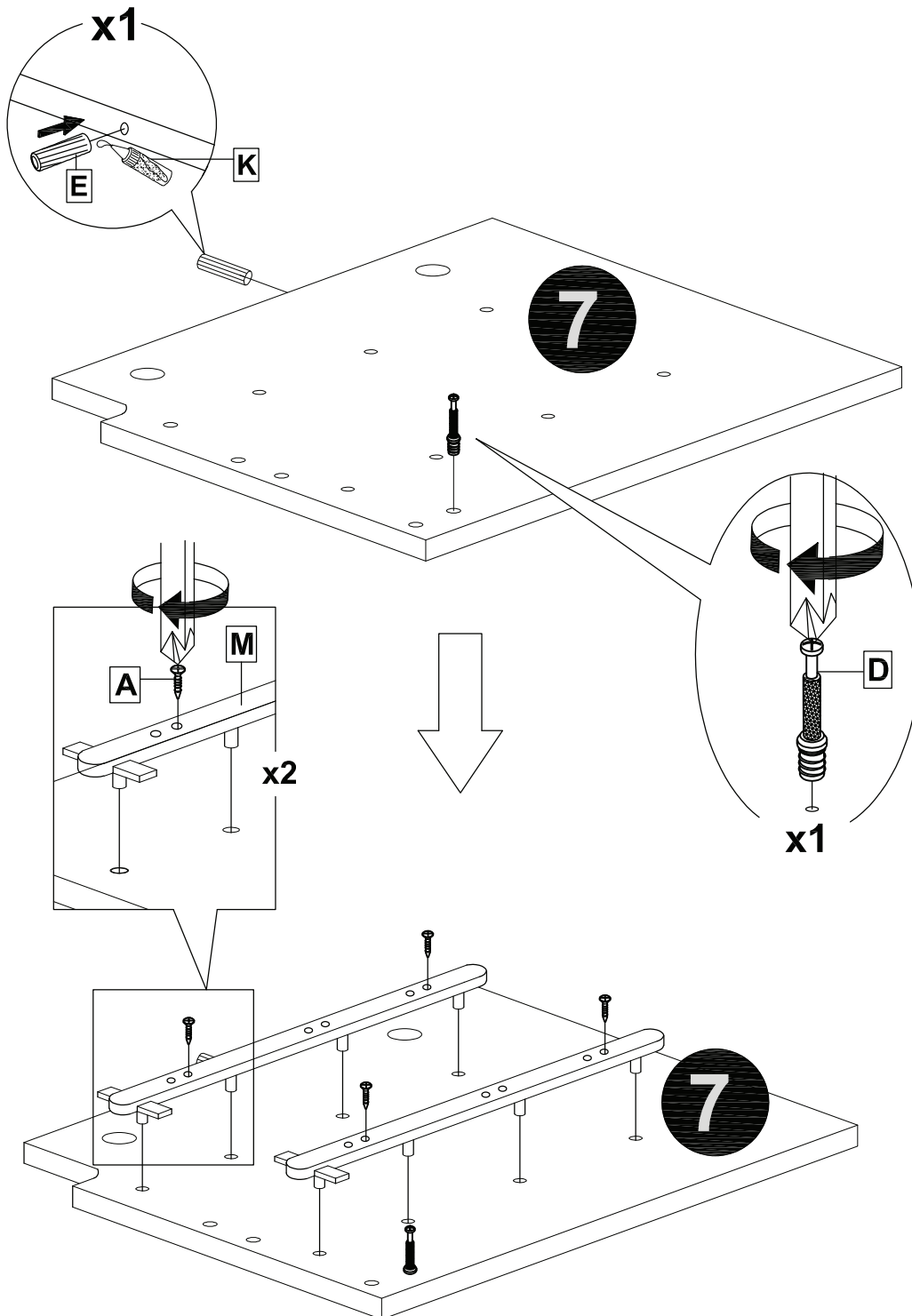


## STEP 3



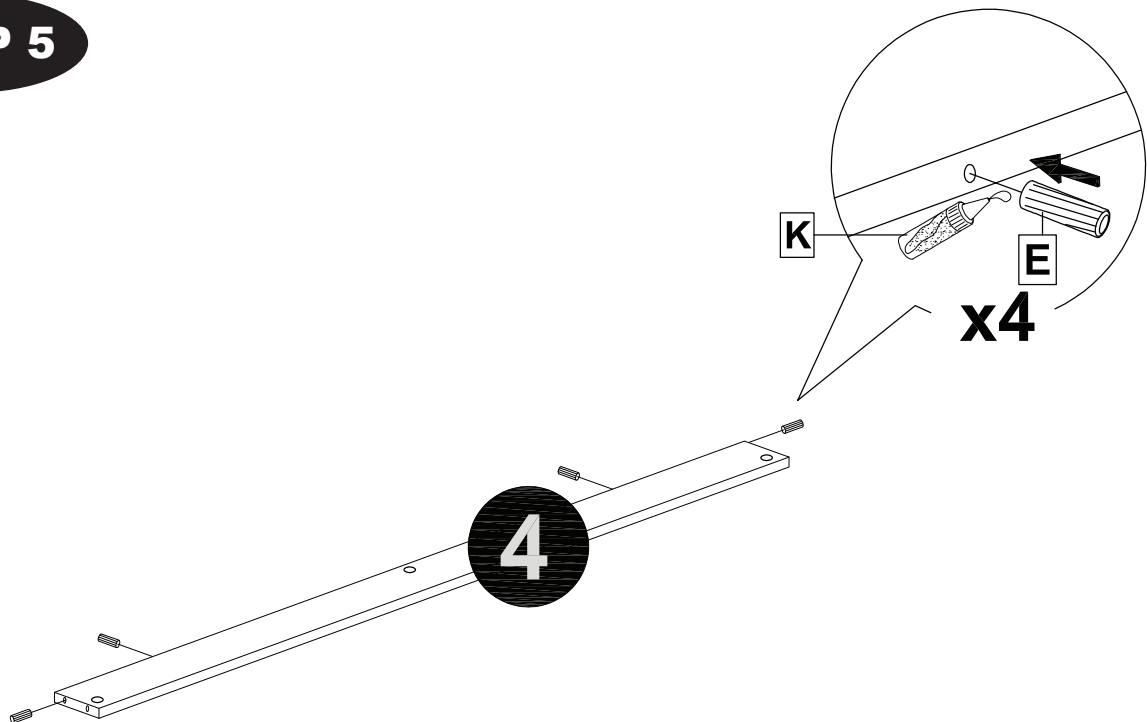
# Assembly

## STEP 4

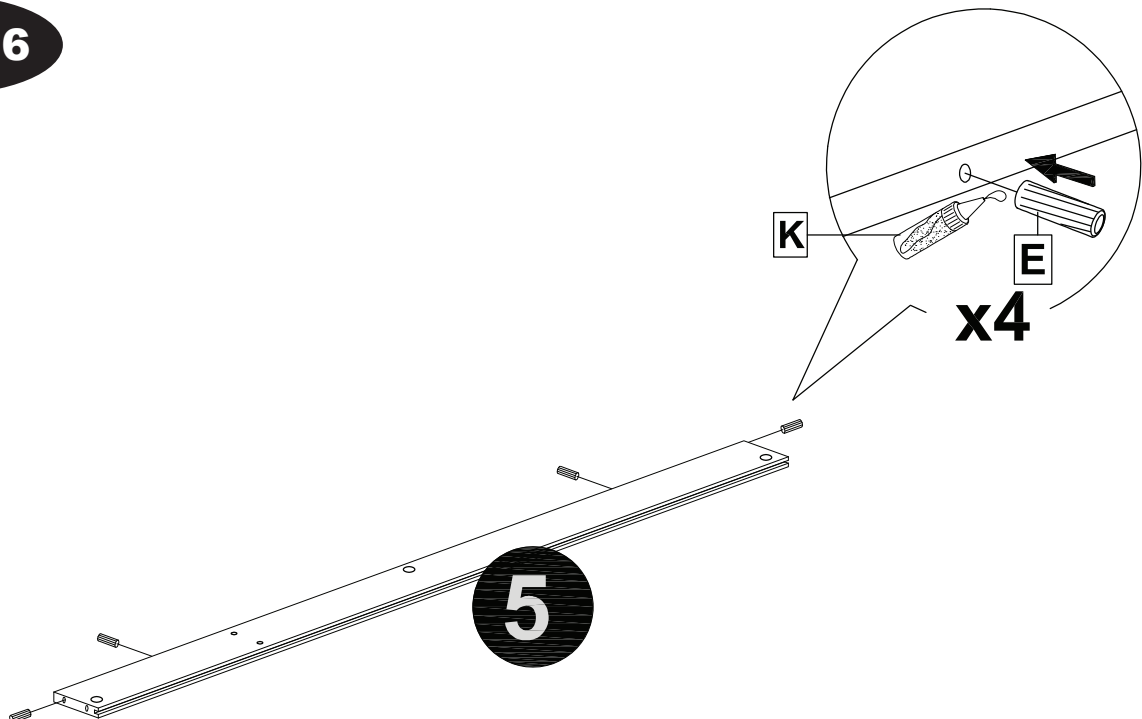


# Assembly

## STEP 5

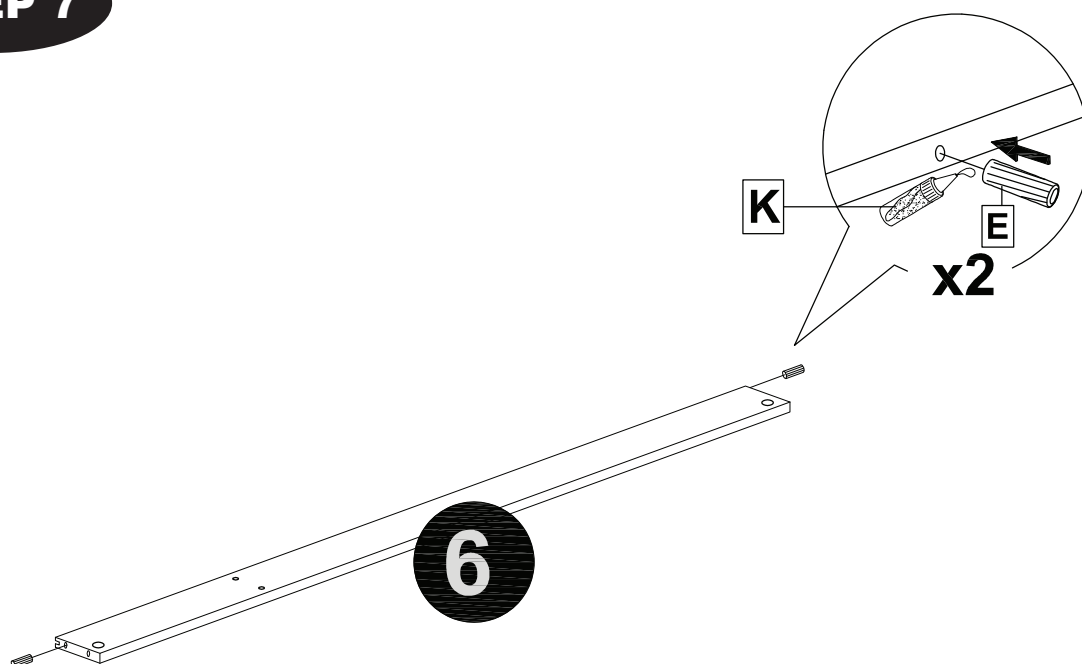


## STEP 6

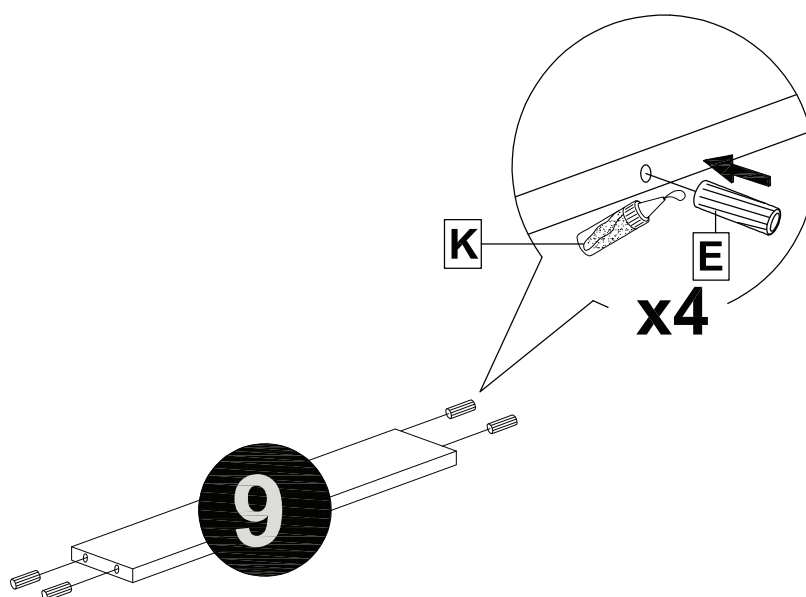


# Assembly

## STEP 7

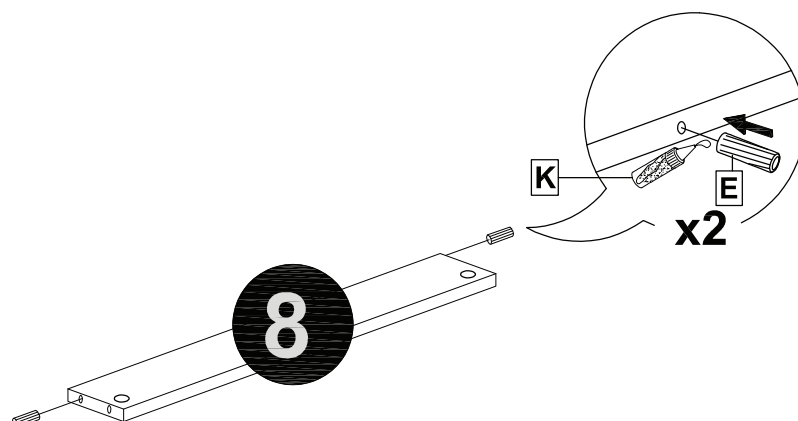


## STEP 8

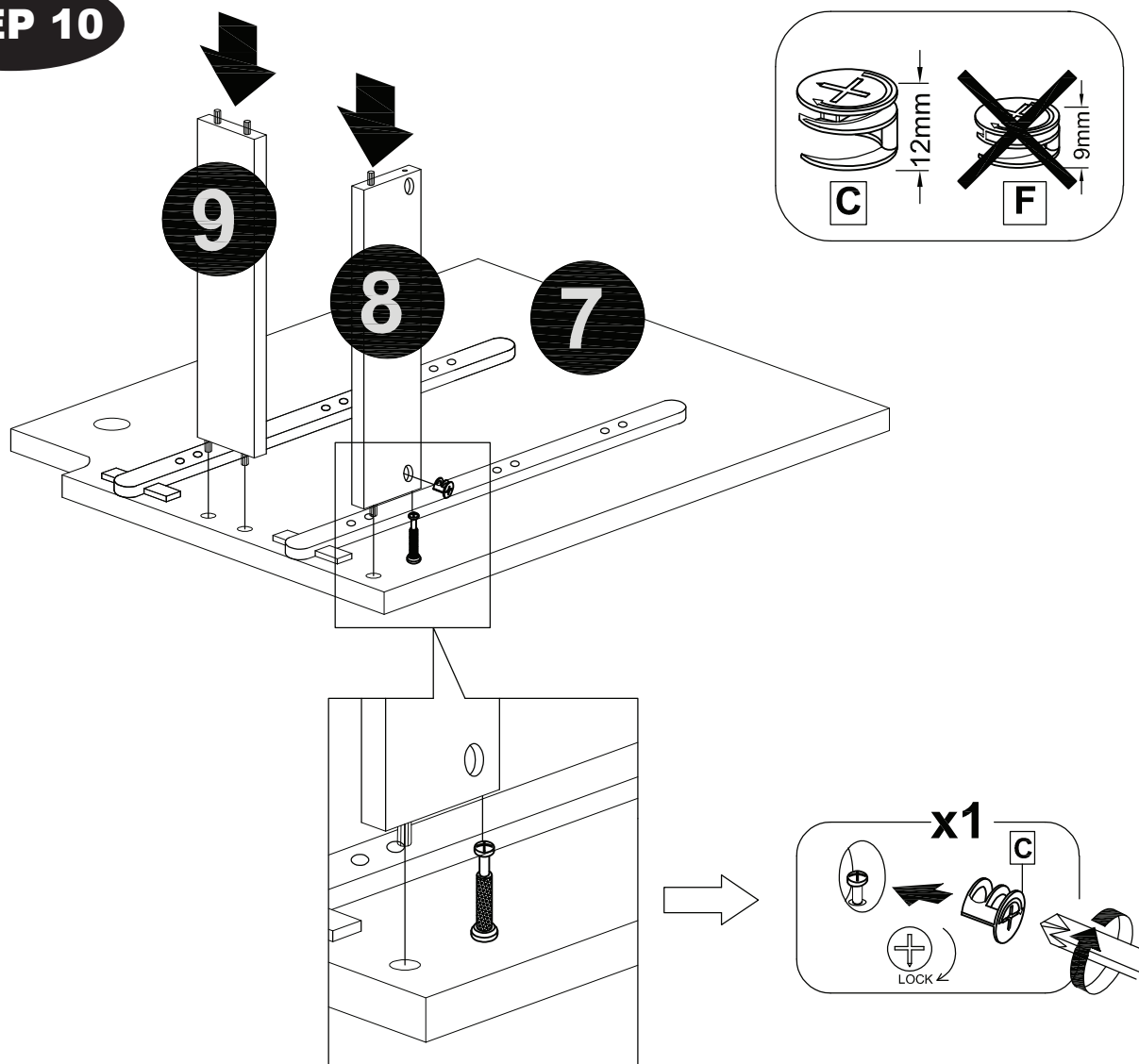


# Assembly

## STEP 9

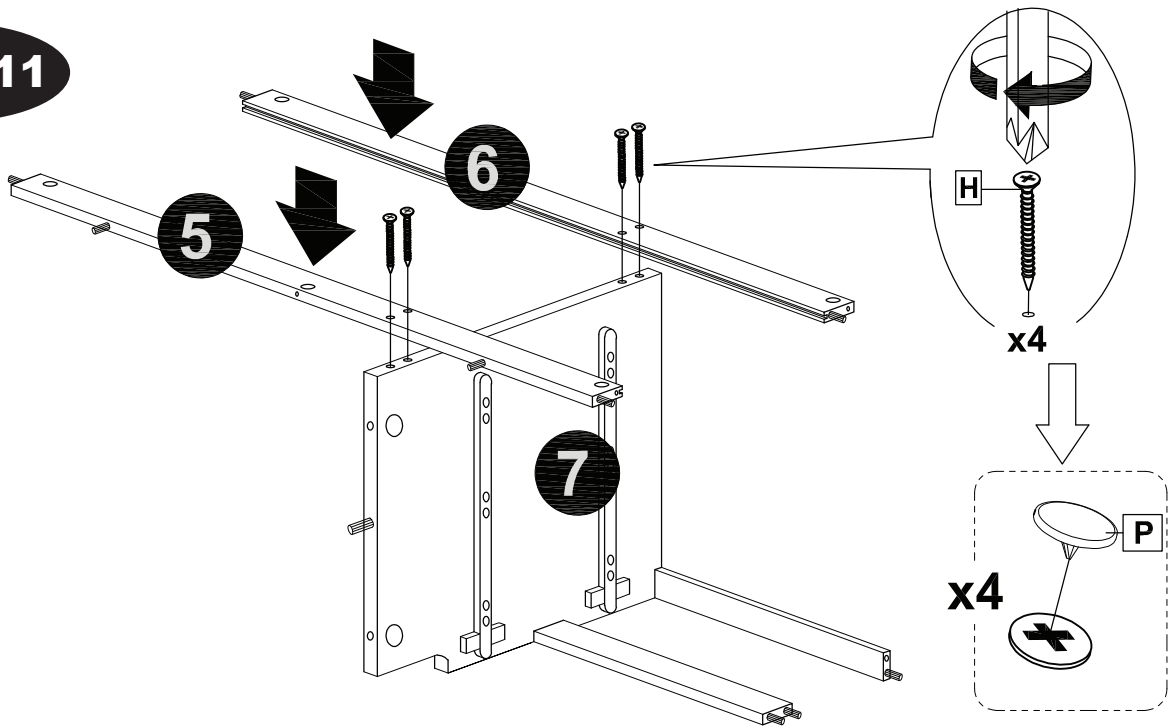


## STEP 10

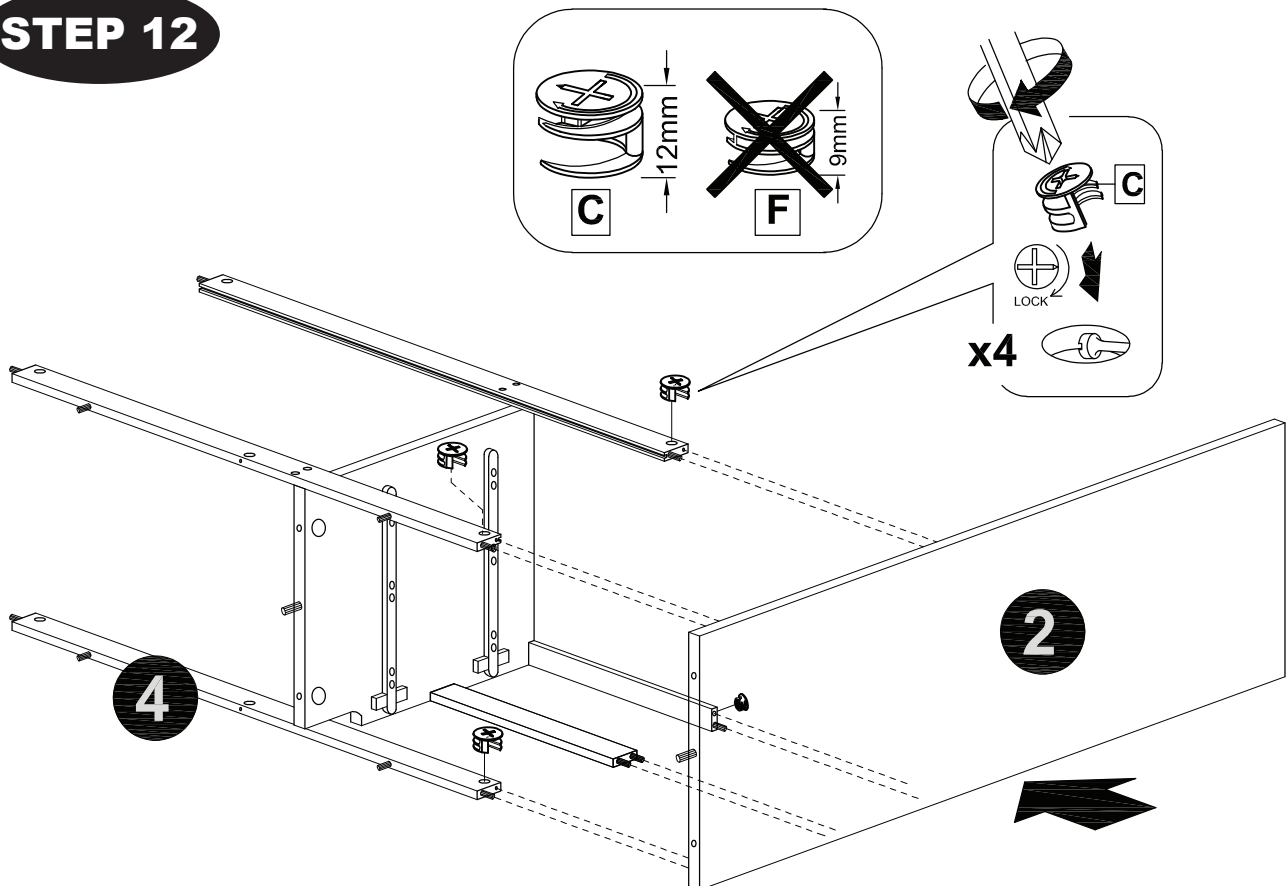


# Assembly

## STEP 11

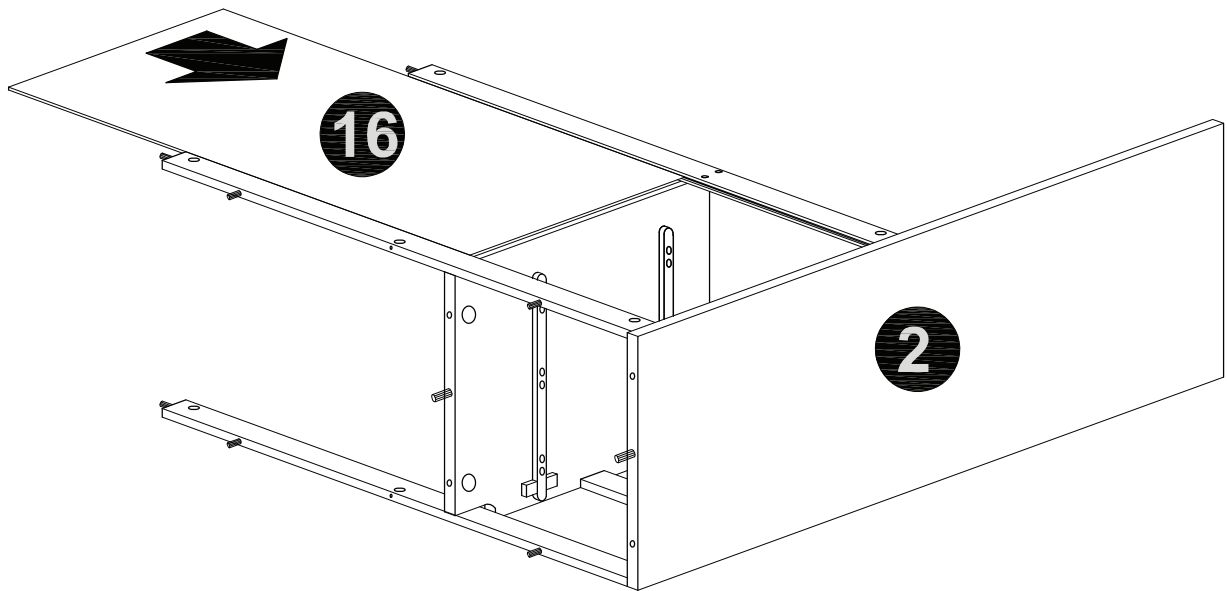


## STEP 12

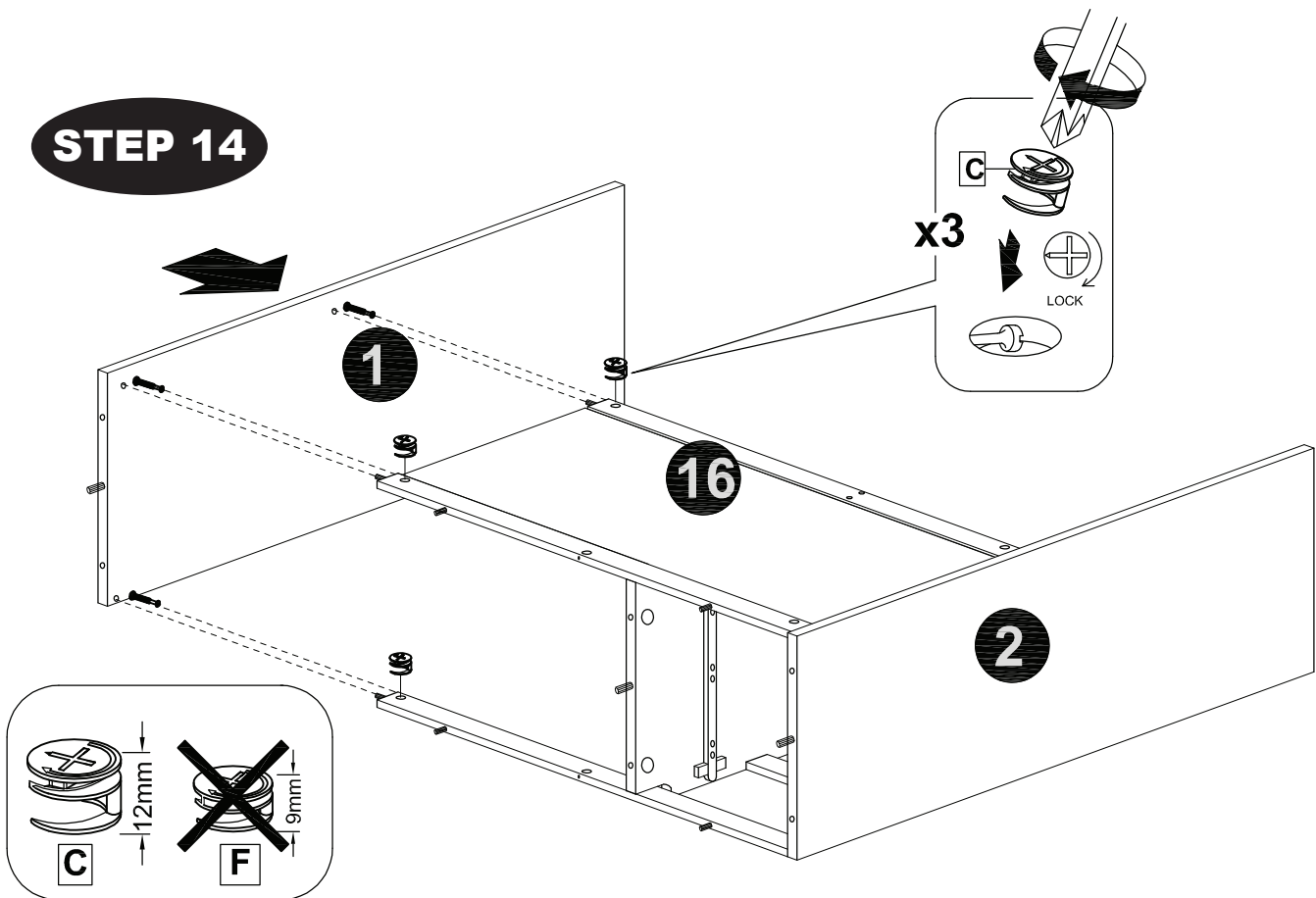


# Assembly

## STEP 13

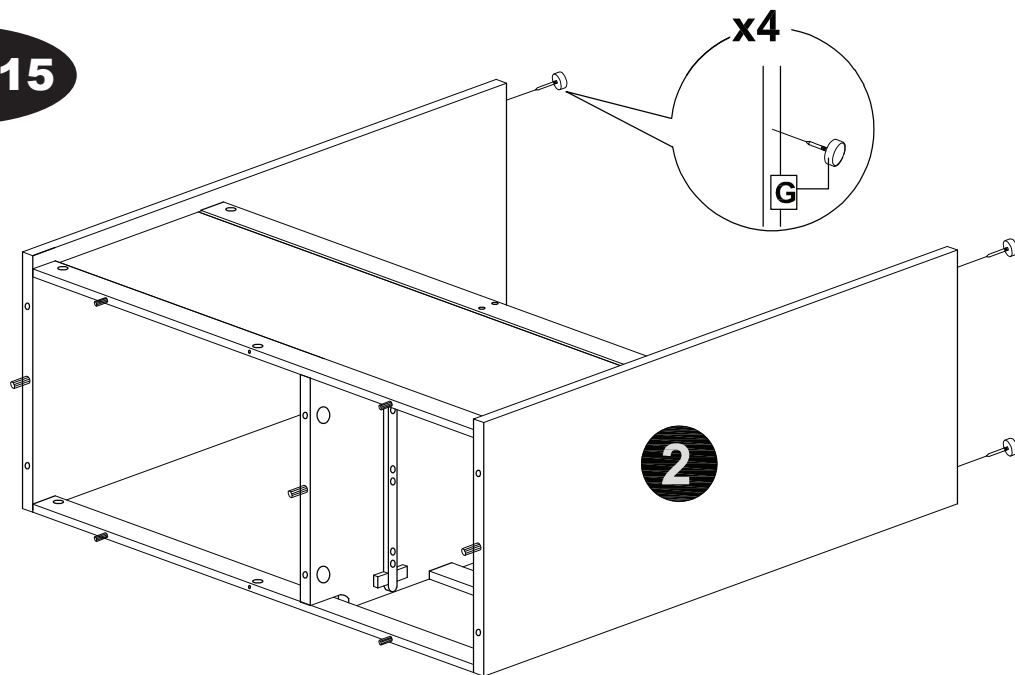


## STEP 14

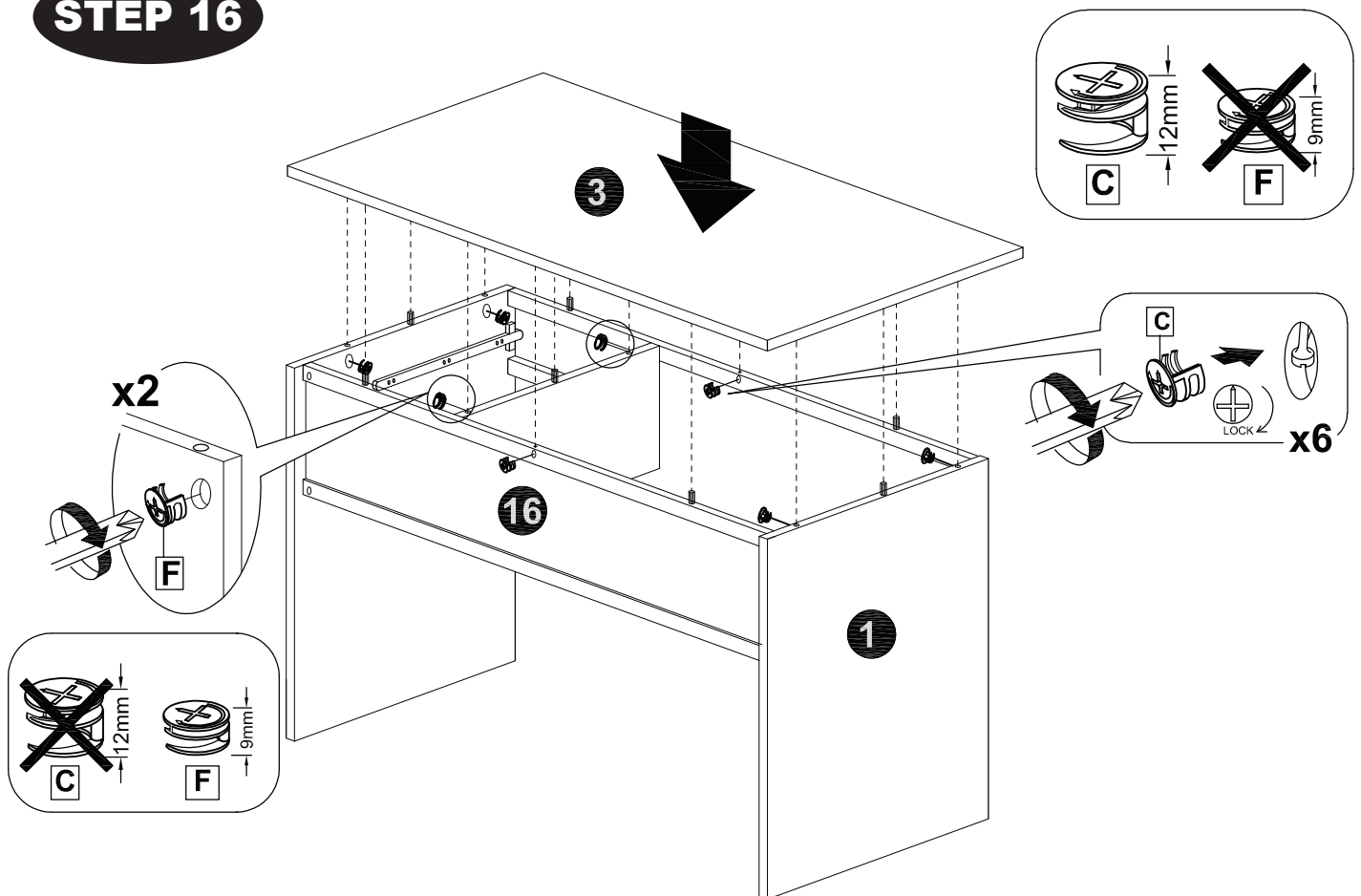


# Assembly

## STEP 15



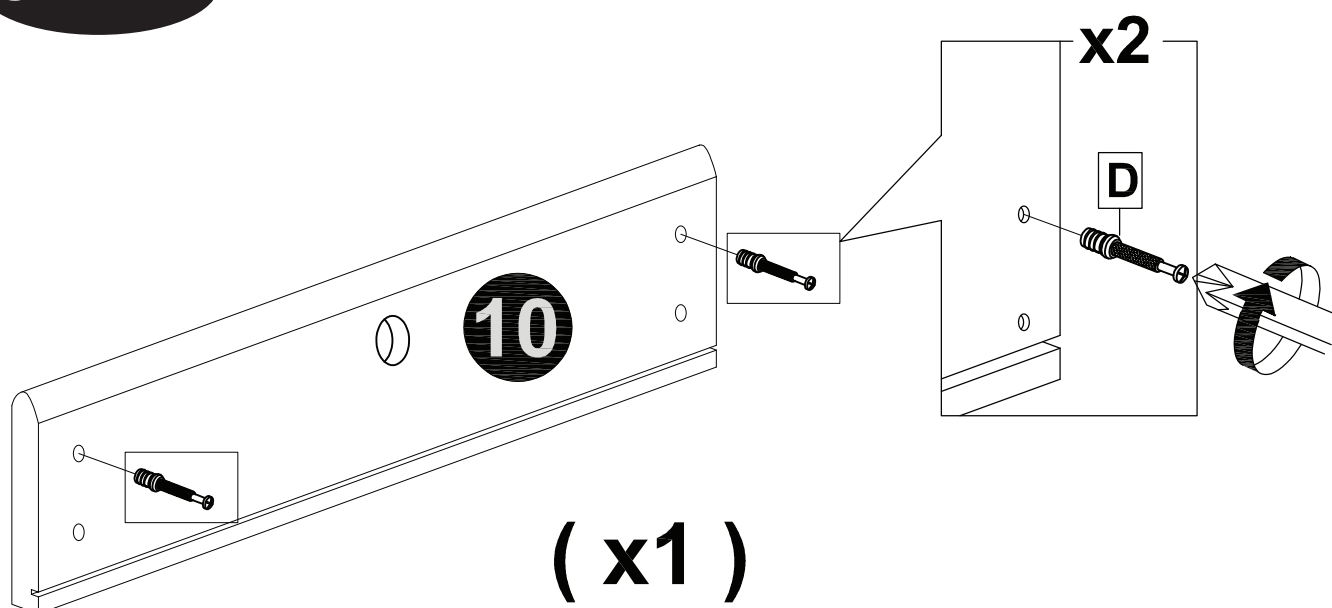
## STEP 16



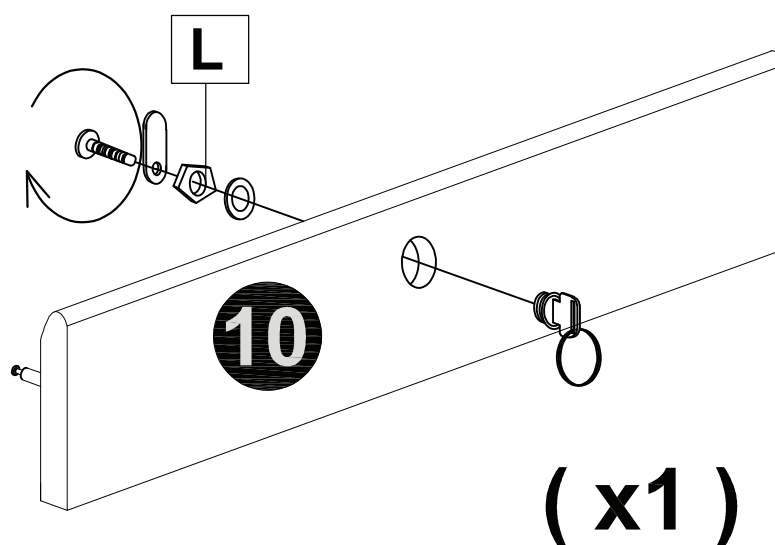


# Assembly

## STEP 17

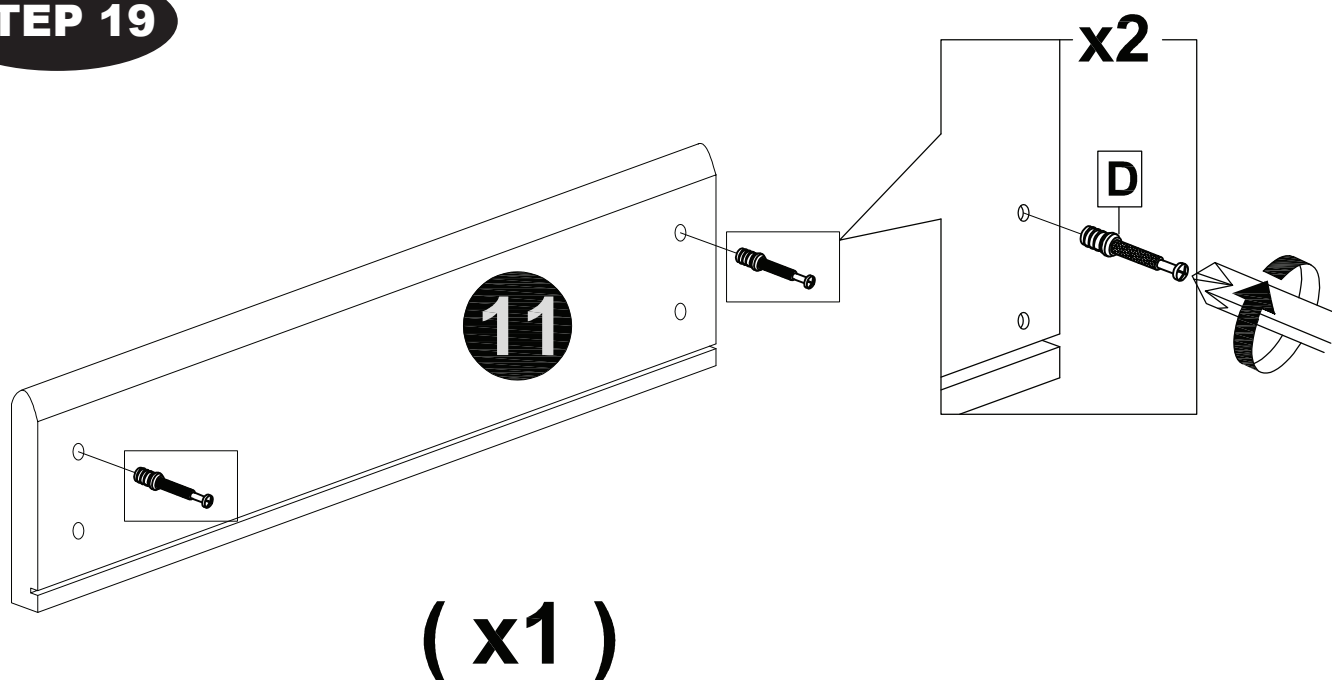


## STEP 18



# Assembly

## STEP 19



## STEP 20

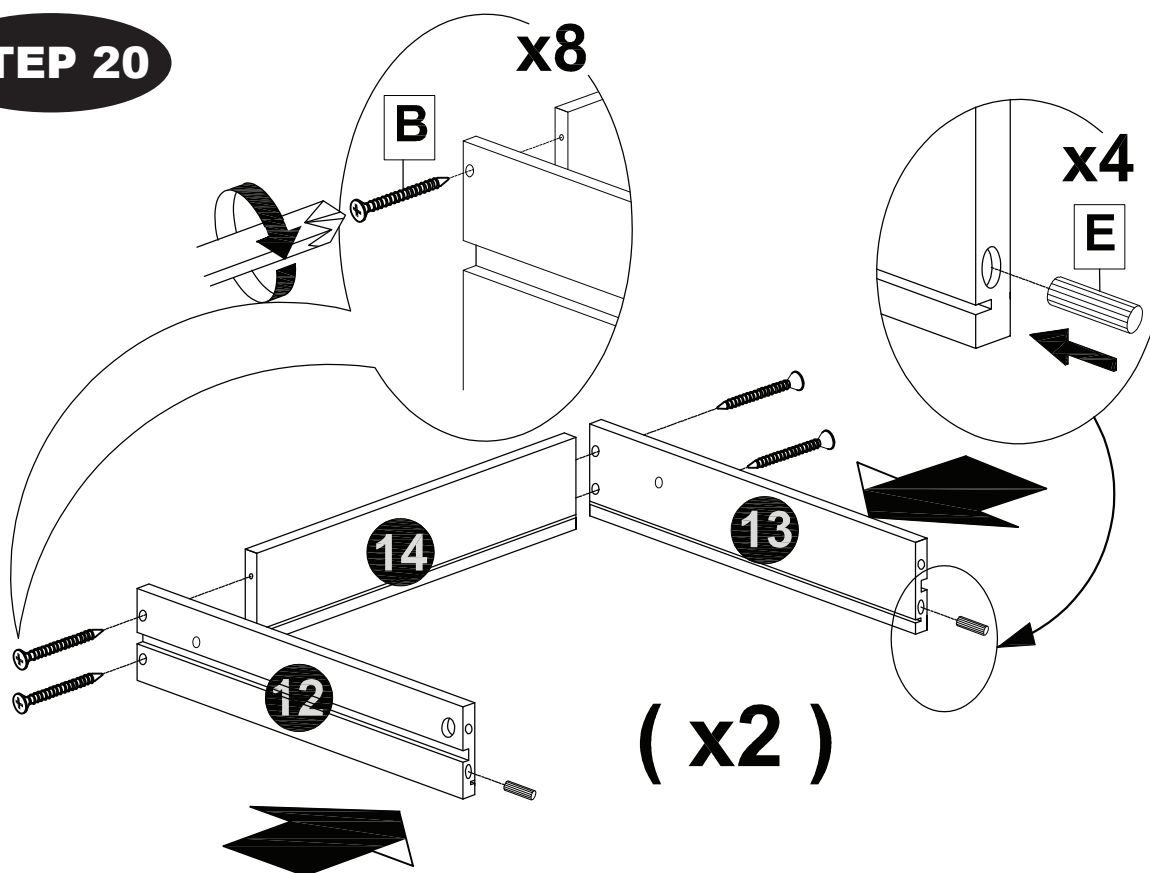
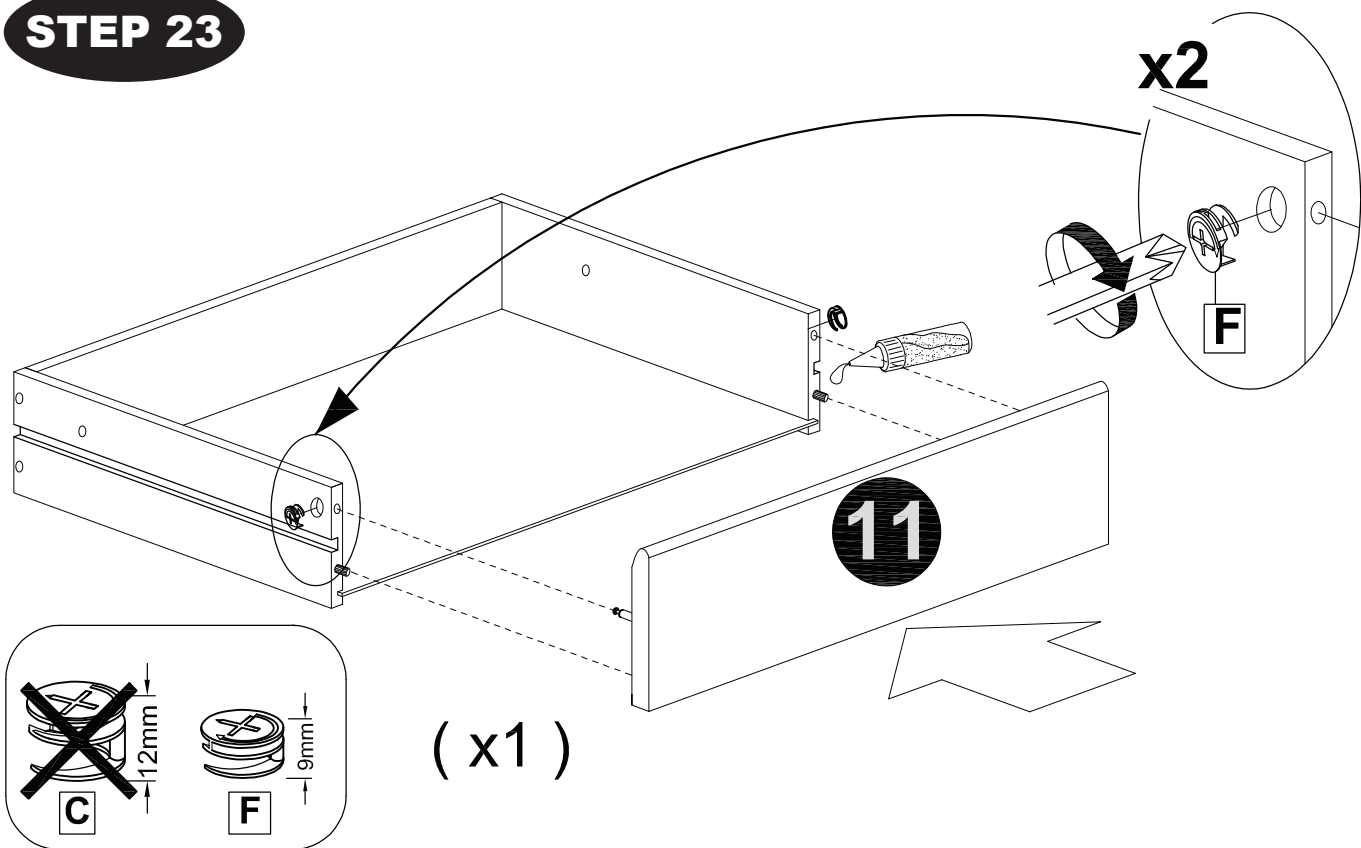


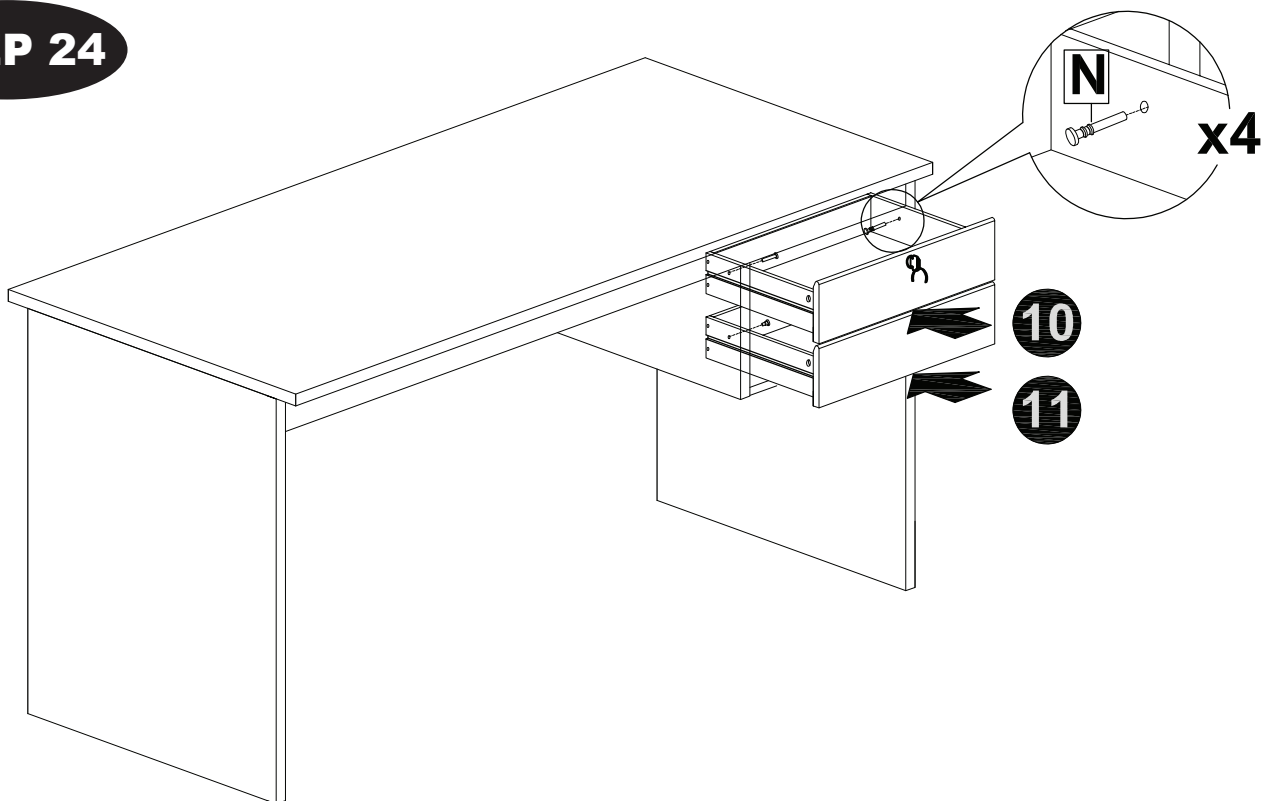
Diagram 15 shows the bottom panel being attached to the side panel. A circular inset provides a close-up view of the connection point, showing a screw being inserted into a pre-drilled hole in the side panel to secure the bottom panel. The number 15 is prominently displayed in a circle, and the quantity (x2) is indicated.

## Assembly

## STEP 23

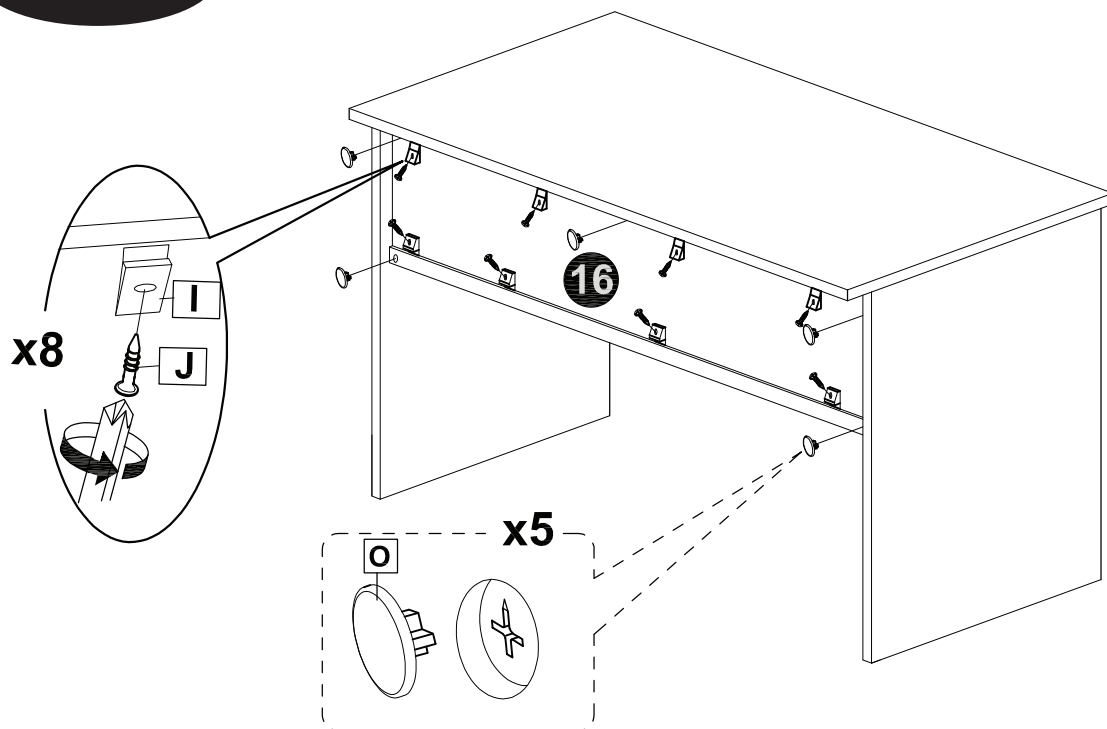


## STEP 24

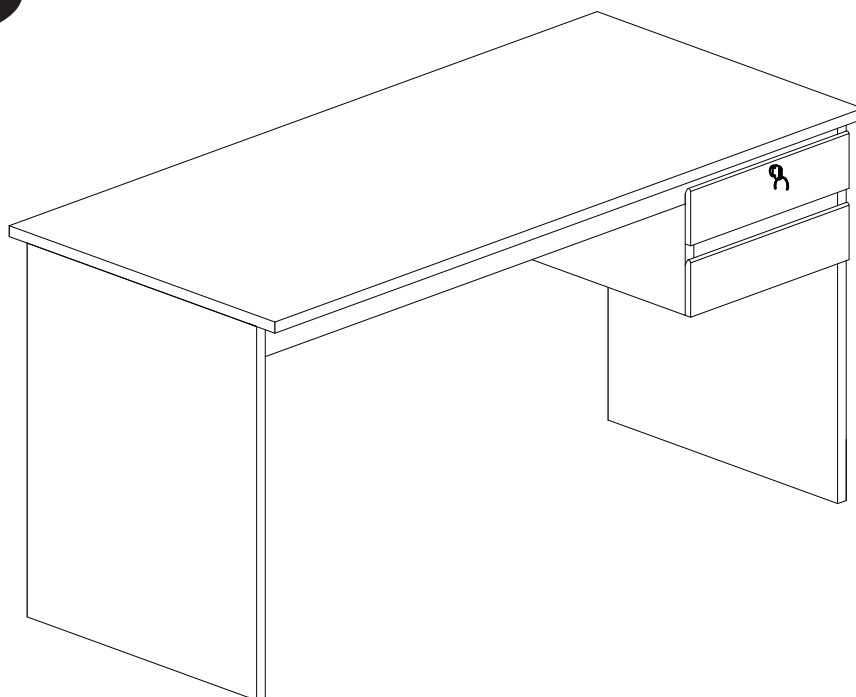


# Assembly

## STEP 25



## STEP 26



## Caution

### **New wooden furniture often has an odour.**

To help this odour dissipate quickly, place the product (or parts of the product) in a well-ventilated dry area.

Air out the room by opening doors and windows if possible to reduce the smell of the new furniture.

The odour is not harmful, and will dissipate in a short amount of time.



# living & co.

## Warranty

We pride ourselves on producing a range of quality products that are both packed with features and completely reliable. We are so confident in our products, we back them up with a two-year warranty. Now you too can relax knowing that you are covered.

Customer Helpline NZ: 0800 422 274  
This product is covered by 2 year warranty  
when accompanied by proof of purchase.

---

**AFTER SALES SUPPORT**

  0800 422 274