

evantair

OIL COLUMN HEATER WITH TIMER

OPERATING INSTRUCTIONS



For Models: TWOC200-7T, TWOC200-9T, TWOC200-11TH

WARNINGS AND SAFEGUARDS

1. Use only the voltage specified on the rating label of the appliance.
2. Keep all objects at least 1 metre from the front, sides and rear of the appliance. Do not place appliance close to radiant heat source.
3. Do not operate in areas where petrol, paint or other flammable liquids are used or stored.
4. Do not insert or allow foreign objects to enter any ventilation or exhaust opening, as this may cause an electric shock, fire or damage to the appliance. Do not sit on the appliance.
5. Do not operate this appliance with a damaged cord, plug or after the appliance malfunctions or has been dropped or damaged in any manner. Return to a qualified electrical person for examination, electrical service or repair.
6. This appliance is intended for household use only and not for commercial or industrial use.
7. Use this appliance only as described in this manual. Any other use is not recommended by the manufacturer and may cause fire, electrical shock or injury.
8. The common cause of overheating is deposits of dust or fluff in the appliance. Ensure these deposits are removed regularly by unplugging the appliance and vacuum cleaning the air vents and grills.
9. Do not use abrasive cleaning products on this appliance. Clean with a damp cloth (not wet) rinsed in hot soapy water only. Always remove plug from the mains supply before cleaning.
10. Do not connect the appliance to mains supply until completely assembled and adjusted.
11. Switch off and use handles provided when moving.
12. Do not operate with cord set coiled up as a heat build up is likely, which could be sufficient to become a hazard.
13. Do not use an extension cord, powerboard or external timer with this appliance.
14. Do not remove plug from power socket until the appliance has been switched off.
15. Do not remove plug from power socket by pulling cord; always grip plug.
16. Always unplug appliance when not in use.
17. Do not locate the heater directly below any power socket during operation.
18. Do not twist, kink or wrap the cord around the appliance, as this may cause the insulation to weaken and split. Always ensure that all cord has been removed from any cord storage area and is unrolled before use.
19. This appliance is not intended for use by persons (including children) with reduced physical, sensory or mental capabilities or lack of experience and knowledge, unless they are supervised or have been given instruction concerning the use of the appliance by a person responsible for their safety.
20. Do not use this appliance in the immediate surrounds of a bath, a shower, or a swimming pool or other liquids. The appliance must not be immersed in any liquids.
21. When the appliance has been unpacked, check it for transport damage and ensure all parts have been delivered. If parts are missing or the appliance has been damaged, contact the Evantair Customer Services Team. (refer to details later in manual)
22. If your appliance does not work, or is not working properly, contact the place of purchase or the Evantair Customer Services Team. (refer to details later in manual). Repair work on the appliance by unqualified persons can cause serious risk to the user.
23. There are no user serviceable parts installed in the unit.
24. Do not place the unit in wardrobes or other enclosed spaces as this may cause fire hazards.
25. This unit is not supposed to be used in or around locations where foodstuffs, works of art or delicate articles of science, etc are stored.
26. Indoor use only.
27. Children should be supervised to ensure that they do not play with the appliance.
28. Ensure heater is on a flat, stable, heat-resistant surface.
29. It is important that you do not cover this heater.

The Evantair logo is displayed in a bold, lowercase, sans-serif font. The letter 'e' is stylized with a dot above it. The logo is contained within a thick, dark grey rectangular border.

SUPPORT AND TECHNICAL ADVICE

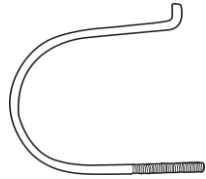
North Shore City, Auckland, New Zealand

Monday – Friday 8am-5pm

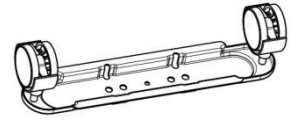
Phone: 0800 232 633

COMPONENTS

Main Body x1



U-shape Bolt x2



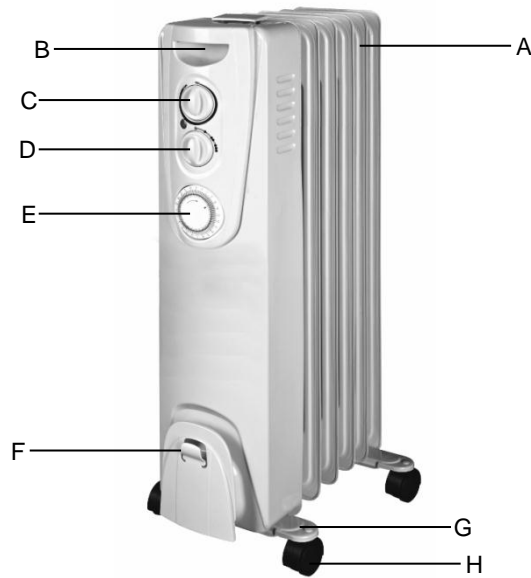
Wheel Castor x2



Wing Nut x2

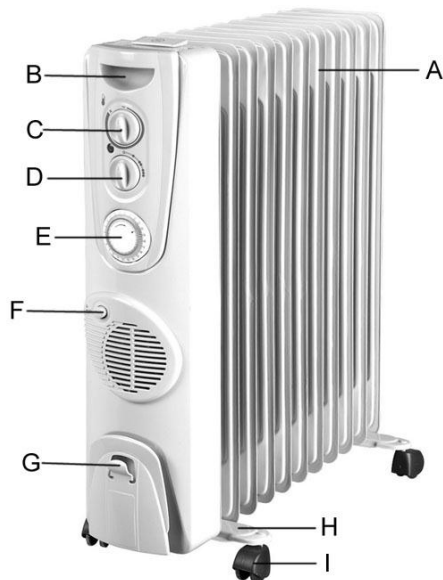
TWOC200-7T, TWOC200-9T

- A. Main body fin
- B. Handle
- C. Adjustable thermostat
- D. Power switch
- E. Timer
- F. Cable plate
- G. Wheel assembly
- H. Wheel

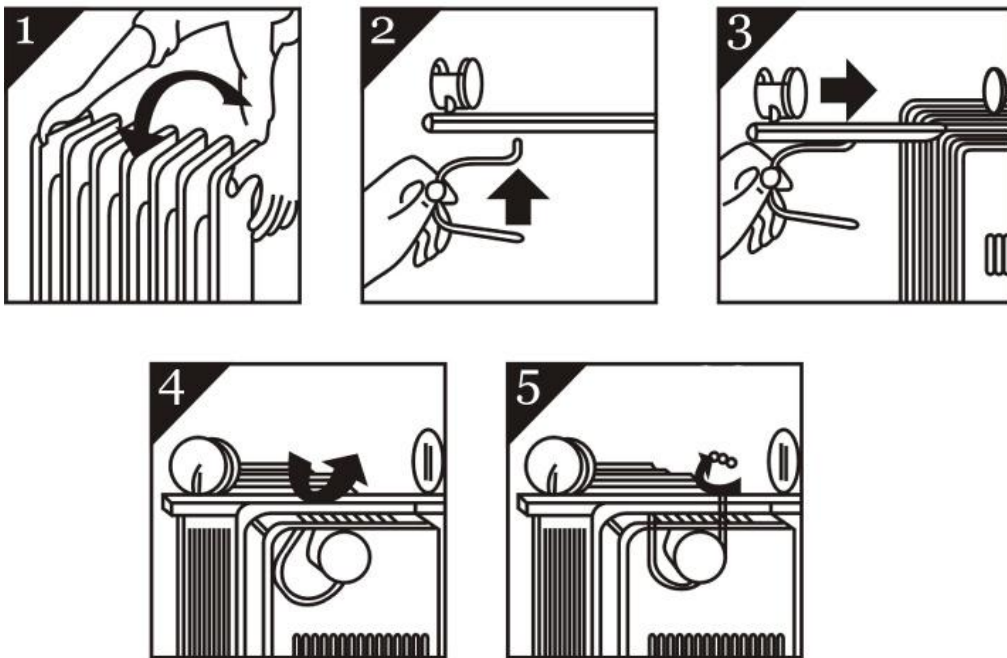


TWOC200-11TH

- A. Main body fin
- B. Handle
- C. Adjustable thermostat
- D. Power switch
- E. Timer
- F. Fan button
- G. Cable plate
- H. Wheel assembly
- I. Wheel



ASSEMBLY



ASSEMBLY OF THE HEATER

Carefully turn the Main Body upside-down on a non-scratching and stable surface. Be careful to prevent damage to the paint finish or your floor surfacing (Fig.1).

Fit the wheel assemblies onto the Main Body by placing the U-shaped bolts between the outermost fins on each side of the Main Body (see Fig.2 - 4).

Securely fasten the wheel assemblies onto the Main Body by screwing the wing nuts onto the U-shaped bolts (see Fig. 5).

IMPORTANT: Please fit the wheel assemblies as per the diagram. Any other position may affect the stability of the heater.

WARNING: Operate the Main Body in normal upright position only with wheel assemblies attached to the bottom, any other position could create a hazardous situation.

OPERATING YOUR OIL COLUMN HEATER

Always choose a safe location for the heater, keeping in mind the safety precautions outlined. Ensure all packaging has been removed from the unit before use. This appliance requires no installation, it should be used solely as a portable appliance.

WARNING: Keep all objects at least 1 metre from the front, sides and rear of the appliance.

PLEASE NOTE: As this heater is fitted with a Timer, the Timer has been set to the “ON” position. Please refer to the Timer section of this manual for setting instructions.

HEAT CONTROL SWITCH

The control switch positions are:

- Low heating
- Medium heating
- High heating

Check that the power On/Off switch is set to Off position before plugging the heater into the mains supply. For greater economy, use the High Heat setting initially and then switch to the Low Heat setting.

THERMOSTAT

Turn the thermostat knob clockwise until you reach the maximum temperature on the graduated scale. When the desired room temperature is reached, slowly turn the knob anti-clockwise until the heater turns off (you will hear a click). The heater will now cycle on and off to maintain the set temperature.

TURBO/CERAMIC HEATER (TWOC200-11TH model only)

The Turbo function is for supplying heat instantly whilst the main heater warms up. For Turbo heat, switch the Turbo ON/OFF using the Fan button on the front of the Turbo cover.

IMPORTANT! NEVER COVER THIS HEATER

SAFETY DEVICE

This appliance has three protection devices:

The first device will automatically turn the appliance off if the appliance is not in the appropriate operating position.

The second device automatically disconnects & reconnects the appliance at a pre-set temperature.

The third device disconnects the appliance permanently in case of overheating, by means of a thermal fuse. (It is non resettable)

Do not attempt to dismantle the heater. There are no user serviceable parts. For service or repair, contact an authorised electrical service technician.

WARNING: Do not use this heater with a programmer, separate timer, remote-control system or any other device that switches the heater on automatically, since a fire risk exists if the heater is covered or positioned incorrectly.

CAUTION: The heater generates heat during use. Proper precautions must be taken to prevent the risk of burns, scalds, fires or other damage to persons.

PROOF OF PURCHASE

To receive warranty retain receipt as proof of purchase.

TIMER

You must set the time prior to programming the Timer. To do this turn; the outer dial of the timer in a clockwise direction until the time of the day (24-hour clock) corresponds with the triangular marking. Example if it is 2pm (1400 hours) then set the triangular mark in line with 14. One complete turn of the dial corresponds to 24 hours.

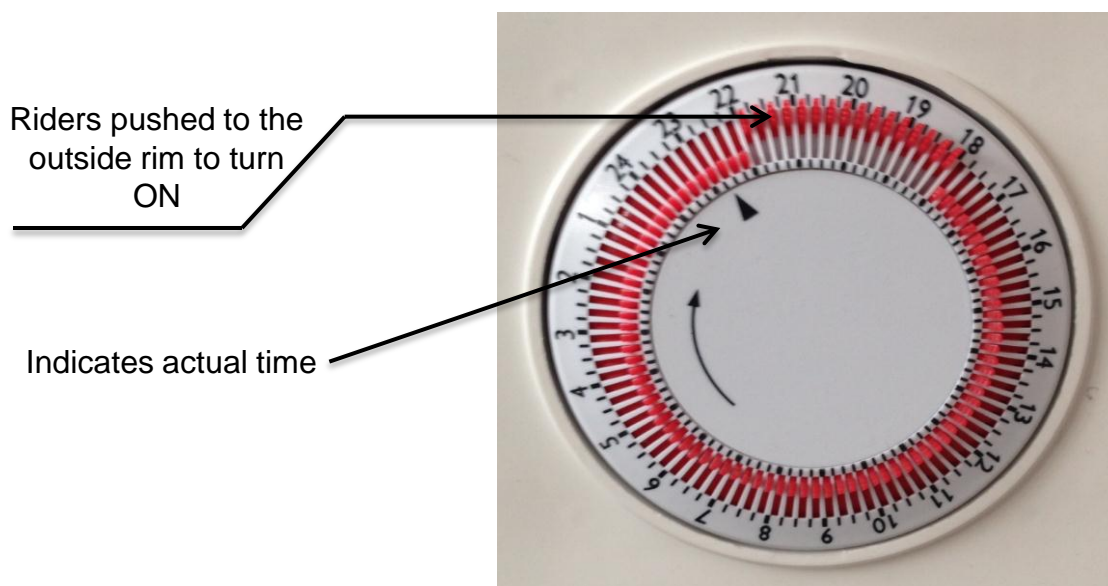
There are 96 “riders”, positioned around the dial, each rider represents 15 minutes.

Where all the “riders” are pushed to the outside of the timer the heater will be ON continuously.

To set a specific time for example:

If you want the heater to be on from 6pm to 10pm, then set all the riders from 18 to 22 (1800 hours to 2200 hours) to the outside of the rim and all other riders to the inside of the timer. The unit will then turn on automatically at 6pm and off again at 10pm.

WARNING: Take care in positioning your heater. Using the Timer will mean the heater will come on automatically. Fire may result if the heater has been placed next to combustible material.



TECHNICAL SPECIFICATION

Model No: TWOC200-7T
Supply: 220-240VAC 50Hz
Wattage: 1500W

Model No: TWOC200-9T
Supply: 220-240VAC 50Hz
Wattage: 2000W

Model No: TWOC200-11TH
Supply: 230-240VAC 50Hz
Wattage: 2300-2400W

evantair

Your Evantair product has been inspected and tested and is guaranteed subject to the following for a period to two years from the date of purchase against defects in workmanship and materials. During this period, such defects will be rectified by repair or replacement of the product purchased. Your product contains no user serviceable components and this warranty becomes invalid if in our opinion the product has been misused, abused, incorrectly installed, tampered with, connected to an electrical supply not corresponding with the name plate specification, or subjected to power surges. The warranty does not include any labour or other associated expense that may be involved in removal or installation of the product. Normal wear and tear is expressly excluded.

If your Evantair product fails to operate satisfactorily, please return it to the retailer from whom it was purchased. To obtain a repair or replacement product under this warranty, you will need to produce satisfactory evidence of date of purchase. The completed warranty and purchase receipt must be presented with the product. The warranty should be filled out at the time of purchase. It is in your interest to make sure this is done.

If the product is to be replaced (cannot be repaired) then that replacement will be of the same or similar product or accessory excluding packaging, instruction card etc. Where a replacement product is supplied, this shall be guaranteed for the balance of the original warranty period.

Any model that is no longer available will be replaced by a model of a value and with such features as we consider appropriate in the circumstances. Evantair Ltd is not responsible for freight forwarding charges, losses or damage in transit.

If service is required after the warranty period has expired, the product should be returned to a qualified electrical technician. Service outside of the warranty period will be at your cost.

Consumers Guarantee Act (1993).

In accordance with the above act consumers are advised that: The manufacturer does not undertake that repair facilities and parts are necessarily available for this product.

If any of the provisions of the foregoing are contrary to any relevant legislation, then that provision shall be deemed to be excluded from the warranty and the rest of the provisions will continue to apply.

IMPORTANT: PLEASE RETAIN THIS WARRANTY CARD

NAME:

ADDRESS:

PURCHASED FROM:

SUBURB:

DATE OF PURCHASE:

NAME OF PRODUCT:

MODEL No:

TWO YEAR WARRANTY

