

# ebony car seat

suitable for newborn 18 kilograms  
group 0 + 1

instruction

MANUAL



**IMPORTANT: KEEP THIS BOOKLET IN THE PLACE PROVIDED ON THE CHILD RESTRAINT.**

Illustrations and designs may vary.

# Safety



Please read this user guide carefully before install the child seat and for future reference.

This child seat suitable children from new-born to 13 kg (Group 0+) and from 9kg to 18kg (Group 1).

Please read this instruction carefully otherwise incorrect installation may cause serious injury. In this case, the manufacturer will not take any responsibility.

Only suitable for use in the listed vehicles fitted with 3 point safety-belts, approved to ECE Regulation No. 16 or other equivalent standards.

The rigid items and plastic parts of a child restraint must be so located and installed that they are not liable, during everyday use of the vehicle, to become trapped by a movable seat or in a door of the vehicle.

Any straps holding the restraint to the vehicle should be tight, any straps restraining the child should be adjusted to the child's body, and straps should not be twisted.

The importance of ensuring that any lap strap is worn low down, so that the pelvis is firmly engaged, shall be stressed.

The device should be changed when it has been subject to violent stresses in an accident.

A general warning shall be given to the user concerning the danger of making any alterations or additions to the device without the approval of the competent authority, and a danger of not following closely the installation instructions provided by the child restraint manufacturer.

When the chair is not provided with a textile cover, the chair should be kept away from sunlight, otherwise it may be too hot for the child's skin.

Do not leave any child in a child restraint system unattended.

Any luggage or other objects liable to cause injuries in the event of a collision shall be properly secured.

The child restraint must not be used without the cover.

The seat cover should not be replaced with any other than the one recommended by the manufacturer, because the cover constitutes an integral part of the restraint performance.

Seat and harness assemblies which get damaged or become worn must be replaced.

Make sure the harness buckle is completely locked. In the event of an emergency, the child can be released quickly.

If there were no child placed in the child seat, the child seat still should be fastened by the vehicle safety belt.

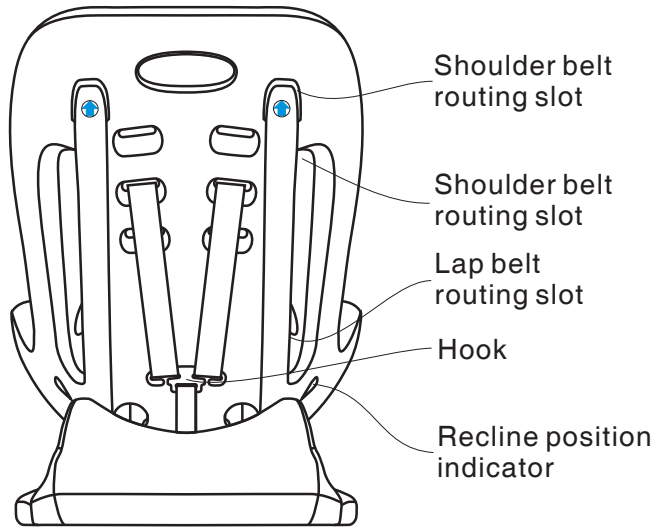
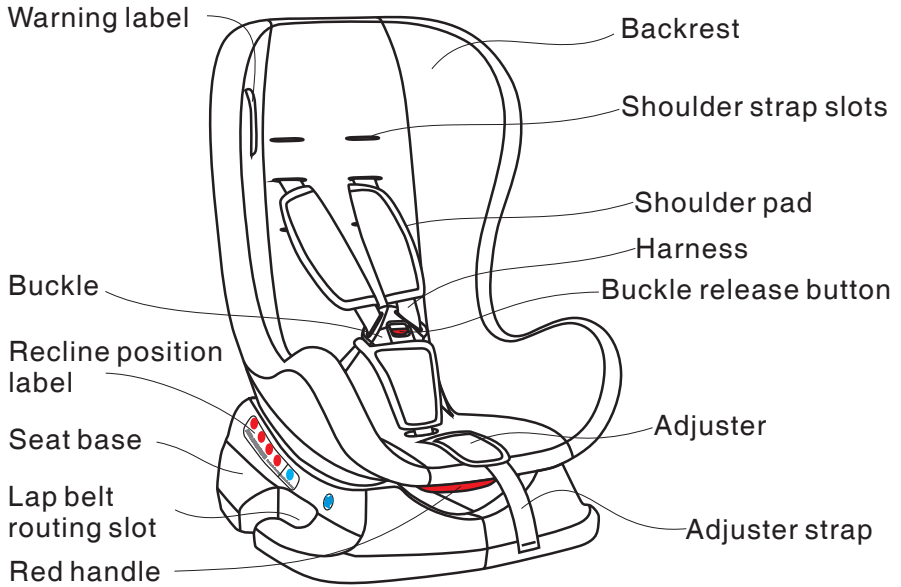
There shall be provisions made so that the instructions can be retained on the child restraint for its life period.

Do not use any load bearing contact points other than those described in the instructions and marked in the child restraint.

If you have any question about the using and installation of the child seat. Please contact our service hotline.

The manufacturer guarantee the quality of the products. But not for second hand products.

# Features



## Suitability

The Ebony car seat is certified to ECE R44/04 as a child safety seat for age groups 0+ and I.

To make sure your child has optimum protection at any age, the Ebony car seat has two different installation options:

Child restraint system	Group	Mass of child
Ebony car seat	Group 0+	From newborn to 13 kg
	Group I	From 9 kg to 18 kg



Rearward facing for newborn babies  
(from newborn to 13kg)



Forward facing for children  
(from 9kg to 18kg)

For Group 0+





**WARNING!**

**DO NOT** place rear-facing child seat on front seat with airbag

**DEATH OR SERIOUS INJURY** can occur



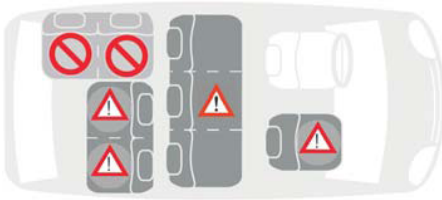
 Only suitable if the approved vehicles are fitted with 3 point safety-belts, approved to UN/ECE Regulation No. 16 or other equivalent standards.

 **DO NOT** place rear-facing child seat on front seat with airbag.

 Incorrect fitting/Not suitable

For Group I

**⚠ IMPORTANT - DO NOT USE FORWARD FACING BEFORE THE CHILD'S WEIGHT EXCEEDS 9 KG.**



**⚠** Only suitable if the approved vehicles are fitted with 3 point safety-belts, approved to UN/ECE Regulation No. 16 or other equivalent standards.

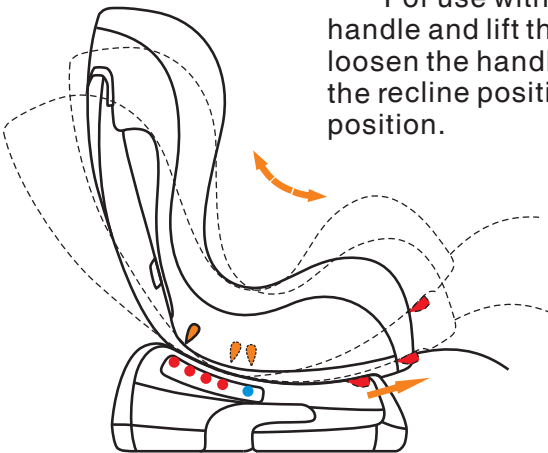
**⚠** If there is a front airbag: slide passenger seat back all the way or nearly so, observe any instructions in vehicle owner's manual.

**⊘** Incorrect fitting/Not suitable

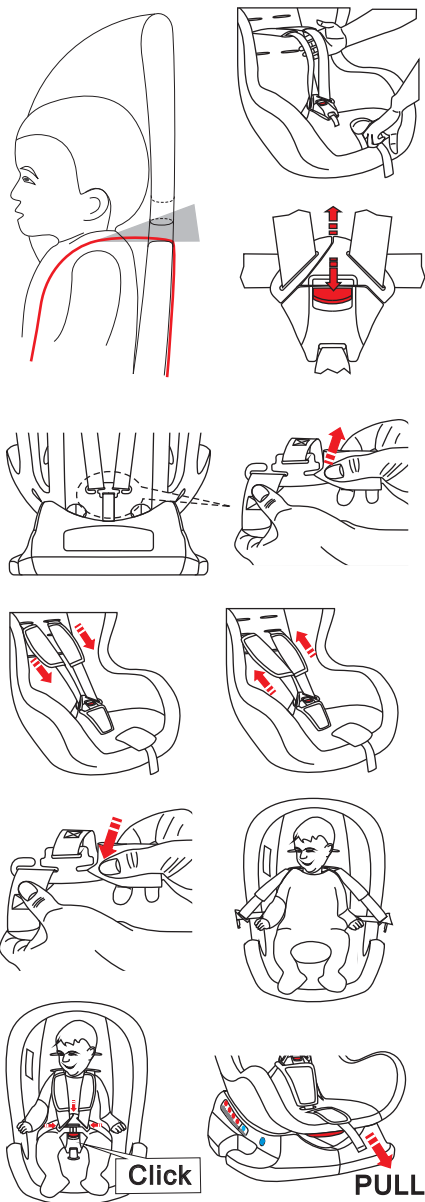
How to recline the seat

For use with group I, hold the red handle and slide the seat backrest to the preferred recline position, then loosen the red handle and hear a “click”. Check the recline position indicator lies on the RED position.

For use with group 0+, hold the red handle and lift the front of the backrest, then loosen the handle and hear a “click”. Check the recline position indicator lies on the BLUE position.



# Installing your child into the child seat



Check the height of the shoulder strap. If it is unsuitable, you should adjust the strap's height.

Press the adjuster and at the same time pull out the harness, Release the buckle by sliding the red button downwards.

Place your child in the seat and check the height of the shoulder straps for correct positioning. The shoulder straps must be threaded through the slots in the cover and seat shell that are closest to the top of your child's shoulders.

To adjust the height of the shoulder straps, release the hook, take out the harness straps from it. Pull the straps through to the front of the seat.

Thread the shoulder straps through the same height slots in the seat cover and shell, make sure the straps are not twisted and both straps are at the same height. Attach the shoulder straps securely to the hook and fasten the shoulder strap cords.

**Important:** You must ensure the shoulder straps are not twisted.

With the harness open, place your child into the child seat. Place the shoulder straps over your child's shoulders. Fasten the buckle by bringing together the two prongs of the harness strap and push into the buckle until you hear a click, restrain child by pulling the adjuster strap.

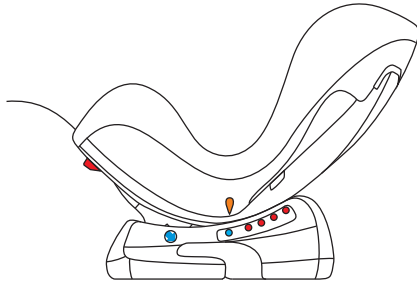
# Installing your child seat - Rearward Facing

For use with Group 0+ - From birth to approx. 18 months (13kg).



## WARNING!

DO NOT place rear-facing child seat on front seat with airbag,  
DEATH OR SERIOUS INJURY can occur



The seat must be fully reclined when rearward facing.

Place the child seat centrally onto the passenger seat. The front of the child seat must be pushed firmly against the back of the vehicle seat. Pull off approximately a metre of lap and diagonal belt and route the two belts as follows:

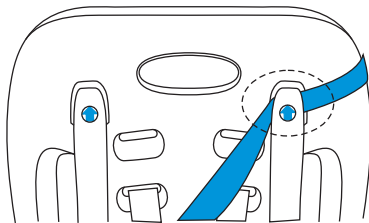
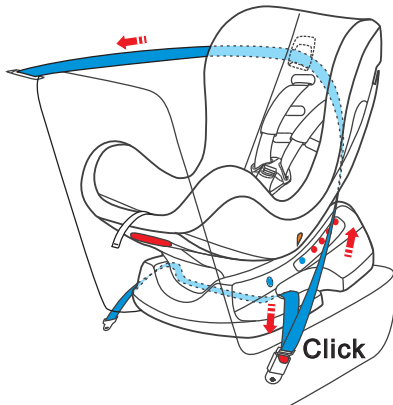
**Lap section:** Thread the lap section under the seat pull it through the lap belt routing slot and into in the belt pathway as shown.

**Diagonal section:** Pull the diagonal section through the slot at the back of the seat and wrap it around the back of the seat.

Insert the lap and diagonal belt into the seat belt buckle. You will hear a click when it is correctly inserted. Pull the lap and diagonal seat belt tightly.

**Caution!** Do not twist the belt.

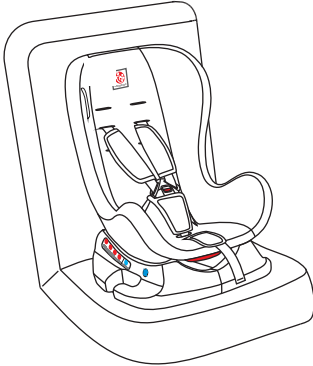
Finally check that the seat is firm and secure. If it is wobbly or slack, you must tighten both belts again until the seat is secure.



## Installing your child seat - Forward Facing

For use with Group I - from approx. 9 months to 4 years (9-18kg).

**IMPORTANT - DO NOT USE FORWARD FACING BEFORE THE CHILD'S WEIGHT EXCEEDS 9 KG**



To secure your child seat by default forward facing using the 3-point belt of your vehicle proceed as follows:

Place the child seat forward facing on the vehicle seat.

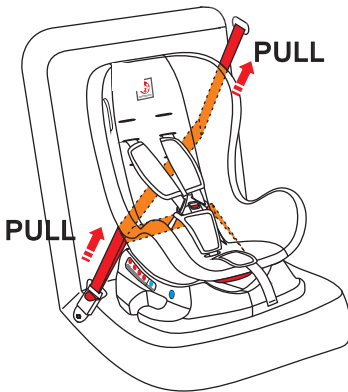
Pull out the vehicle 3-point belt and through one of the side opening (depends on which side of the car you want to install the seat) and ensure the buckle tongues engage in the vehicle seat buckle. You will hear an audible **CLICK!**

**Tip!** Of course, you can also use the child seat in the reclined position.

Use your knee to press the child seat into the vehicle seat. Pull firmly on the diagonal seat belt section.

**Caution!** Do not twist the belt.

Finally check that the seat is firm and secure. If it is wobbly or slack, you must tighten both belts again until the seat is secure.

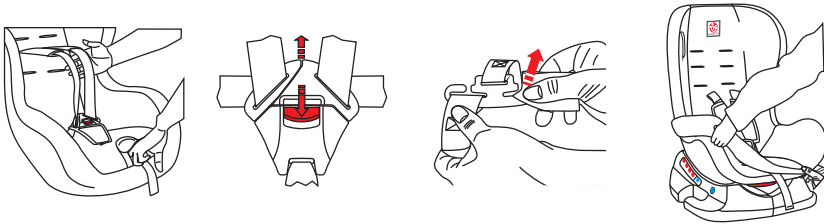


## Removing the child safety seat from vehicle

Release the vehicle seat buckle. Remove the vehicle diagonal belt section from the belt routing slot. Remove the vehicle lap belt from the belt routing slot. Remove the child safety seat from vehicle.



## Cleaning & Maintenance



To remove the cover for cleaning, you should loosen the harness straps as far as possible, release the harness buckle, and take out the harness straps from the hook. Put the straps through to the front of the seat. Carefully pull up the cover from the backrest.

**IMPORTANT** - The cover is a safety feature. **NEVER** use the child seat without it. Don't put your child's safety at risk by using other makes of replacement cover, they could stop the child seat from protecting your child as well as it should.

### Washing instruction:

The cover is removable and washable at 30°C. Line dry only.



### NOTICE

This is a “Universal” child restraint . It is approved to Regulation No. 44,04 series of amendments, for general use in vehicles and it will fit most, but not all, car seats.

A correct fit is likely if the vehicle manufacturer has declared in the vehicle handbook that the vehicle is capable of accepting a “universal” child restraint for this age group.

This child restraint has been classified as “Universal” under more stringent conditions than those which applied to earlier designs which do not carry this notice.

If in doubt, consult either the child restraint manufacturer or the retailer.

notes:

---

---

---

---

---

---

---

---

---

---

---

---

---

---

---

---

---

---

---

---

---

---

---

---

---

notes:

---

---

---

---

---

---

---

---

---

---

---

---

---

---

---

---

---

---

---

---

---

---

---

---

---

---

motherschoice.com.au

IGC DOREL NEW ZEALAND LTD  
14 Sir William Avenue  
East Tamaki Auckland 2013  
Email: customerservice@igc.co.nz  
Phone: 0800 628 000 (toll free)  
Hours: 8:00 am - 5:00 pm Monday to Friday



Specifications are subject to change without notice.  
Copy or reproduction without permission is prohibited.  
© 2016 Dorel Australia Pty Ltd. All Rights Reserved.

[www.dorel.com.au](http://www.dorel.com.au)

GM0906 04/16 #016999